

UFI FILTERS  
Filtri Oleodinamici  
Accessori



 HYDRAULIC  
COMPONENTS  
& FLUID CONTAMINATION  
CONTROL



# CFA ACCESSORIES

## DESCRIPTION

Filling breathers

## MATERIALS

Housing, flange and basket: Zinc plated steel  
Cap: Chrome plated steel  
Seals: Sugheroil (NBR Nitrile for pressurised version only)  
Filter element ((not replaceable):  
Impregnated cellulose 3µm  
Polyurethan foam 10µm

## FLOW RATE

Qmax 750 l/min

## WORKING TEMPERATURE

From -25°C to 110°C

## HOW IT WORKS

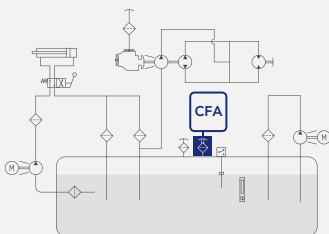
CFA filling plugs include an inbuilt air breather and a protection basket against ingress of coarse parts (removable for CFA23). The connection to the tank is flanged with standard dimensions, with additional tank connection options for CFA23 (welding flange or plug extension). For sizes CFA21 & CFA22 the plug has a safety chain.

## COMPATIBILITY

Full with fluids HH-HL-HM-HV-HTG (according to ISO 6743/4). For fluids different than the above mentioned, please contact our Customer Service.



## HYDRAULIC DIAGRAM



Is this datasheet the latest release? Please check on our website.

### ORDERING AND OPTION CHART

C	F	A	COMPLETE FILTER FAMILY				
			<b>SIZE &amp; LENGTH</b>	<b>11</b>	<b>21</b>	<b>22</b>	<b>23</b>
			<b>MOUNTING PATTERN</b>				
			S = DIN 24557/2 flange	S	S	S	S
			T = Plug extension	-	-	-	T
			W = Welding flange	-	-	-	W
			<b>PRESSURIZATION VALVE</b>				
			W = Without	W	W	W	W
			A = 35 kPa (0,35 bar)	-	A	A	A
			<b>SEALS</b>				
			C = Sugheroil	C	C	C	C
			N = NBR Nitrile (with A option only)	-	N	N	N
			<b>FILTER MEDIA</b>				
			CC = Impregnated cellulose 10 µm (3 µm in air)	CC	CC	CC	CC
			PE = Polyurethan foam 40 µm (10 µm in air)	PE	PE	PE	PE
			<b>ACCESSORIES</b>				
			P = Padlock holder	-	P	P	P
			S = Internal fixing chain (only for mounting pattern S)	-	S	S	S

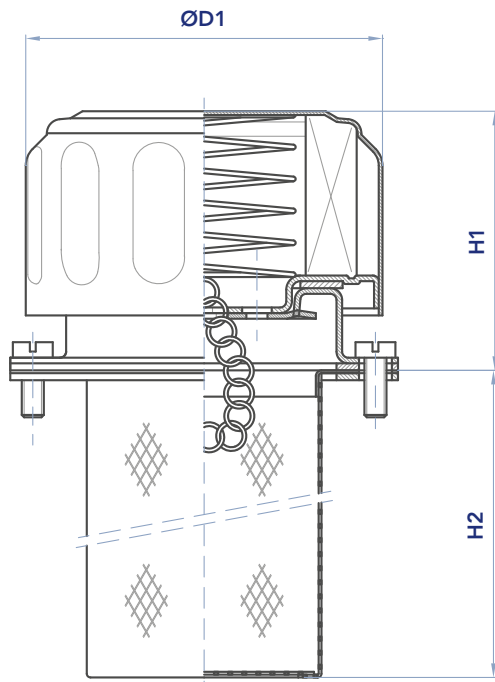
### DIMENSIONS

	D1	D2	D3	D4	Holes n°	D5	D6	H1	H2	DWG
CFA11S	47	29	52	M5	3	31	41	48	64	A
CFA21S	80	50	83	M5	6	52	73	57	78	B
CFA22S	80	50	83	M5	6	52	73	57	148	B
CFA23S	80	40	83	M5	6	42	73	57	100	B
CFA23W	80	38	83	-	-	40	-	53	100	C
CFA23TW	80	38	-	-	-	-	-	-	-	D
CFA23TA	70	38	-	-	-	-	-	-	-	D

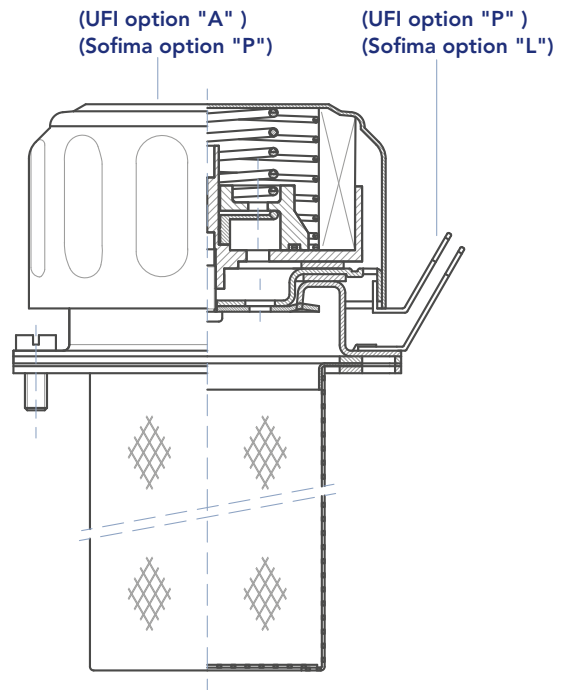


# INSTALLATION DRAWING

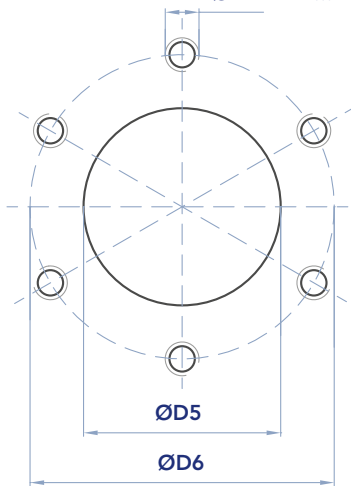
## DWG A



## DWG B



ØD4 X n°... holes

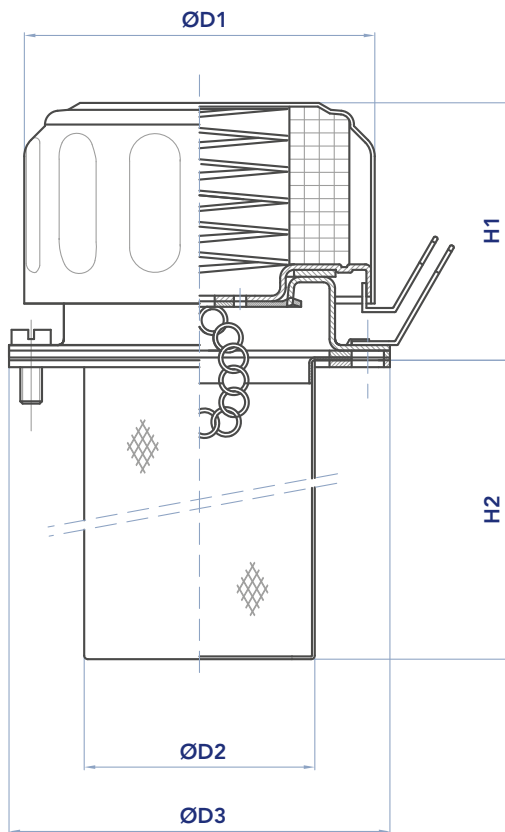


Tank connection:  
DIN 24557/2

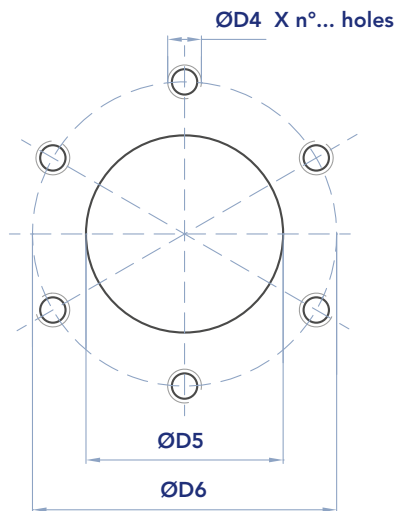
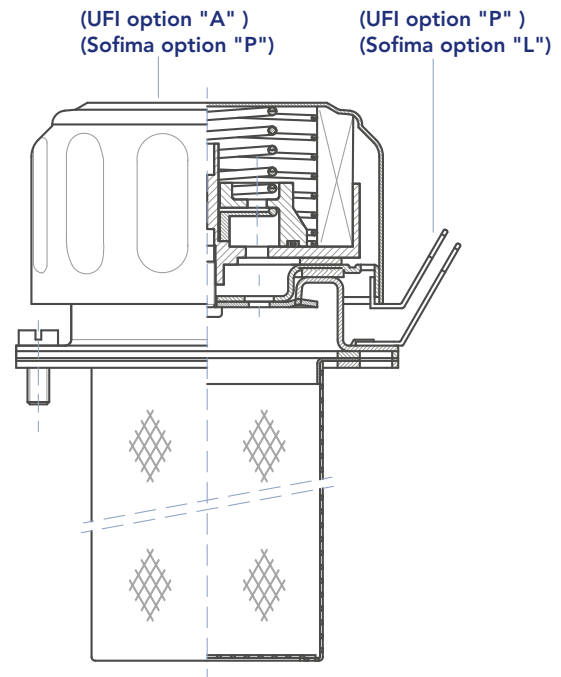


### DIMENSIONS

DWG C



DWG D



Tank connection:  
DIN 24557/2



### DESCRIPTION

Visual level indicator

### MATERIALS

Transparent part: Trogamid T  
Anti-shock protection: Painted steel  
Fixing bolts: Zinc plated steel  
Seals: NBR Nitrile (FKM Fluoroelastomer on request)

Double scale thermometer (Celsius and Fahrenheit)  
option available.  
Tightening torque for the fixing bolts 10 Nm.

### PRESSURE

Max pressure 100 kPa (1 bar)

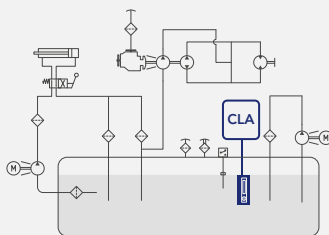
### WORKING TEMPERATURE

From -20°C to +90°C

### COMPATIBILITY

Full with fluids HH-HL-HM-HV-HTG (according to ISO 6743/4).  
For fluids different than the above mentioned, please contact  
our Customer Service.

### HYDRAULIC DIAGRAM



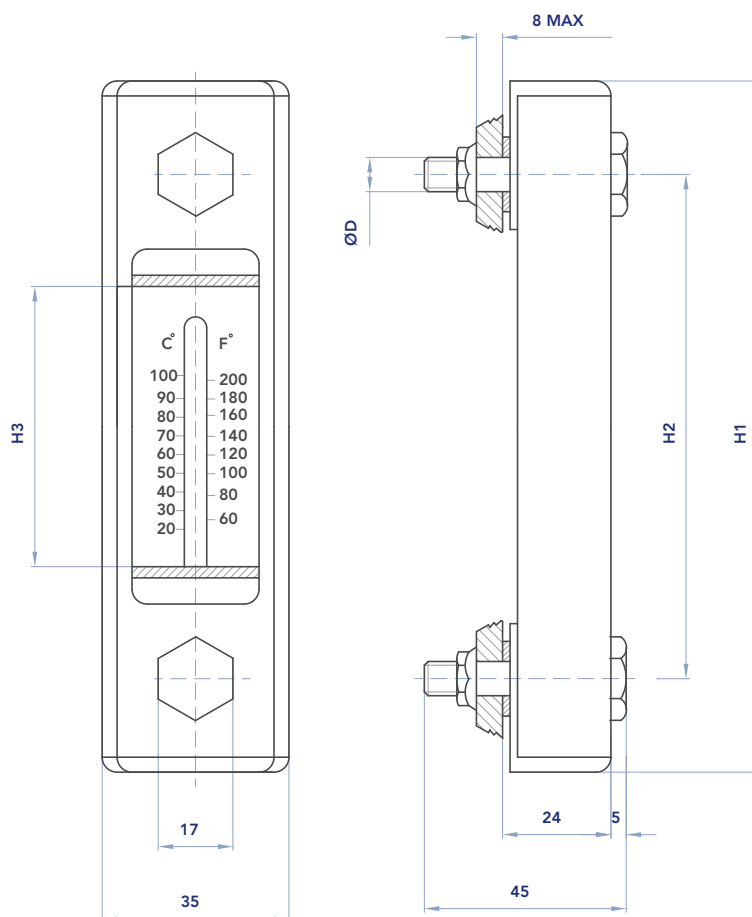
Is this datasheet the latest release? Please check on our website.

### ORDERING AND OPTION CHART

C	L	A	COMPLETE FILTER FAMILY		
			<b>SIZE &amp; LENGTH</b>		
			<b>11</b>	<b>12</b>	<b>13</b>
			<b>M CONNECTION TYPE</b>		
			M	M	M
			<b>CONNECTION SIZE</b>		
			10 = M10	10	10
			12 = M12	12	12
			<b>N SEALS</b>		
			N = NBR Nitrile	N	N
			F = FKM Fluoroelastomer	F	F
			<b>ACCESSORIES</b>		
			W = without	W	W
			T = with thermometer	T	T

### DIMENSIONS

	H1	H2	H3	D
CLA11M10NW	108	76	32	M10
CLA11M10NT	108	76	32	M10
CLA12M12NW	160	127	78	M12
CLA12M12NT	160	127	78	M12
CLA13M12NW	286	254	202	M12
CLA13M12NT	286	254	202	M12





# CLB ACCESSORIES

## DESCRIPTION

Float switches

## MATERIALS

Tank connection: Anodized aluminum

Rod: Stainless steel

Float: Polyamide

## ELECTRICAL DATA

SPDT Reed switch

Max load AC up to 48 V - 0,5 A

Maxload DC up to 48 V - 0,5 A

Connector DIN 43650

Protection DIN 40050: IP 65

## HOW IT WORKS

Electrical level indicators, an electrical signal is activated when the minimum (or maximum) oil level is reached. The REED switch has SPDT contacts.

N.B. the float switch must be mounted at min 50 mm from ferrous walls. Max oil viscosity 150 cSt.

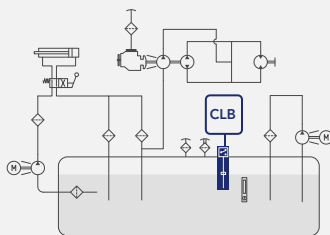
## WORKING TEMPERATURE

From -10°C to 90°C

## COMPATIBILITY

Full with fluids HH-HL-HM-HV-HTG (according to ISO 6743/4). For fluids different than the above mentioned, please contact our Customer Service.

## HYDRAULIC DIAGRAM



Is this datasheet the latest release? Please check on our website.





# CLB

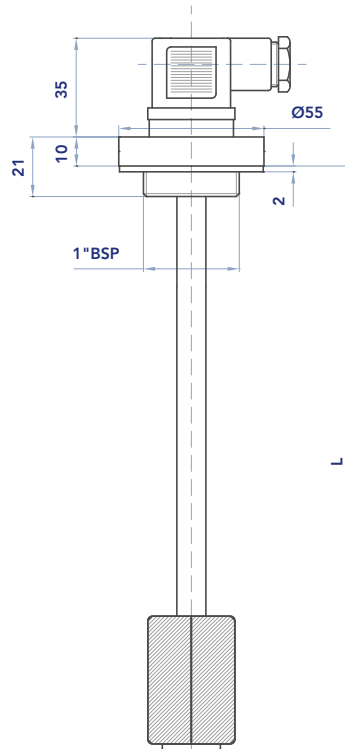
## ACCESSORIES

### ORDERING AND OPTION CHART

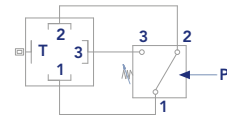
C	L	B	COMPLETE FILTER FAMILY						
			<b>SIZE &amp; LENGTH</b>	15	20	25	35	40	50
			<b>U CONNECTION TYPE</b>						
			U = Universal, 1" BSP+ 2 or 3 holes flange	U	U	U	U	U	U
			<b>N SEALS</b>						
			N = NBR Nitrile	N	N	N	N	N	N
			<b>W ACCESSORIES</b>						
			W = Without	W	W	W	W	W	W

### DIMENSIONS

	L
CLB15UNW LME150B5F	150
CLB20UNW LME200B5F	200
CLB25UNW LME250B5F	250
CLB35UNW LME350B5F	350
CLB40UNW LME400B5F	400
CLB50UNW LME500B5F	500



#### ELECTRICAL DATA



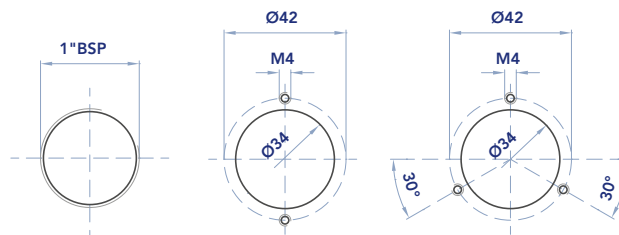
1=COMMON  
2=N.C.  
3=N.O.

SPDT Reed switch  
Max load AC up to 48V-0,5A  
Max load DC up to 48V-0,5 A

Connector DIN 43650

Protection DIN 40050: IP65

#### Tank mounting pattern possibilities:





# FAB

## ACCESSORIES



### DESCRIPTION

Oil bath air filter and cyclone prefilter

### MATERIALS

Housing: Black painted steel  
Internal parts: Steel  
Filter element: Zinc painted steel (stainless steel on request)  
Prefilter transparent housing and baffle: plastic material  
Seals: NBR Nitrile

### FLOW RATE

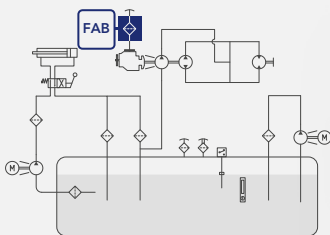
From 3.000 to 12.000 l/min

### WORKING TEMPERATURE

Max working temperature: 95°C



### HYDRAULIC DIAGRAM



Is this datasheet the latest release? Please check on our website.

# FAB

## ACCESSORIES

### SIZING INSTRUCTIONS

$$Q = \frac{C \times N}{K}$$

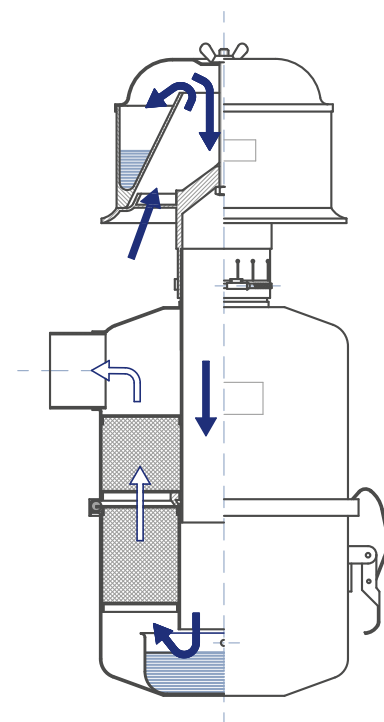
Q (lt/min) = Flow rate  
 C (lt) = Total displacement  
 N = RPM  
 K = Coefficient

#### K - coefficient for engines

Cylinders	2 Strokes	4 Strokes
1	K = 0,42	K = 0,52
2	K = 0,83	K = 1
3	K = 0,83	K = 1,6
4 ÷ 8	K = 0,83	K = 2

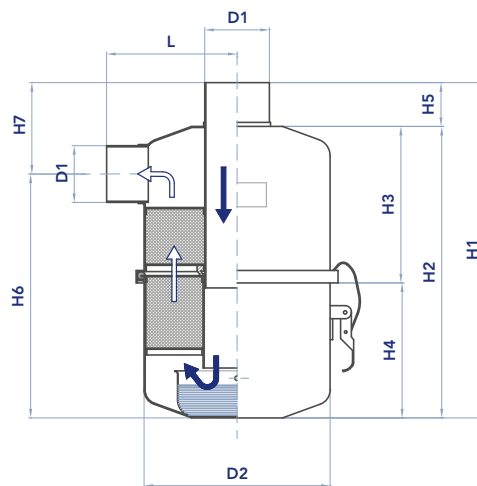
#### K - coefficient for compressors

Cylinders	K
1	K = 1,2
2	K = 2,4



### DIMENSIONAL LAYOUT

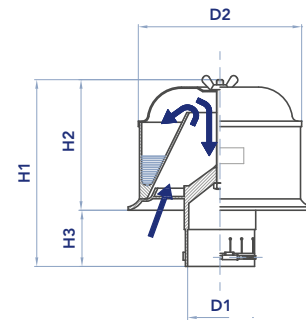
Filter	l/min	D1	D2	H1	H2	H3	H4	H5	H6	H7	L	Kg
6000.6	3000	57	164	293	252	129	123	41	201	92	116	2,5
6000.7	4000	57	164	348	307	156	151	41	260	88	116	3,9
6000.8	5500	65	187	385	334	172	162	51	273	112	131	4,5
6000.9	8000	93	266	451	397	209	188	54	321	130	182	7,5
6000.10	10000	93	266	529	475	246	229	54	399	130	179	9,5
6000.11	12000	114	322	558	503	262	241	55	412	146	210	13,5





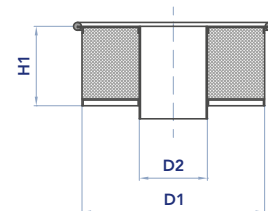
## CYCLONE PREFILTER

Pre-filter	For filter	l/min	D1	D2	H1	H2	H3	Kg
6025.4	6000.6 - 6000.7	4000	57	140	175	115	60	0,4
6025.5	6000.8	6000	65	154	185	115	70	0,6
6025.6	6000.9 - 6000.10	10000	93	222	235	175	60	1,15
6025.6S2	-	11000	102	222	235	175	60	1,13
6025.7	6000.11	12000	114	222	235	175	60	1,1



## SPARE FILTER ELEMENT

Filter	For filter	D1	D2	H1
5702.6	6000.6	161	60	70
5702.7	6000.7	161	60	105
5702.8	6000.8	184	68	105
5702.9	6000.9	262	96	120
5702.10	6000.10	262	96	170
5702.11	6000.11	318	117	185





## LubeTeam Hydraulic S.r.l.

*Administration and Headquarter:*

Via Tufara Scautieri, 6  
83018 - San Martino Valle Caudina (AV)

*Office and Warehouse:*

S.S. 7 Appia, Km. 237,00

82011 - Airola BN

ITALY

Tel. +39 0823 950 994

Fax +39 0823 412 546

[www.lubeteam.it](http://www.lubeteam.it) [info@lubeteam.it](mailto:info@lubeteam.it)

Italian VAT / C.F. e P.IVA: 01251720627

Follow us



This document is the property of LubeTeam Hydraulic S.r.l. All data reported here are for the exclusive use of the Receiver. Reproduction is not authorized without writing permission, in all or in part of the content of this document, in accordance to Law 633 art. 171, dated April 22, 1941.

Il presente documento è di proprietà della LubeTeam Hydraulic S.r.l. I dati riportati sono per esclusivo del destinatario. La riproduzione, di tutto o in parte, non è autorizzata senza permesso scritto secondo l'art. 171 della L. 633 del 22 Aprile 1941.