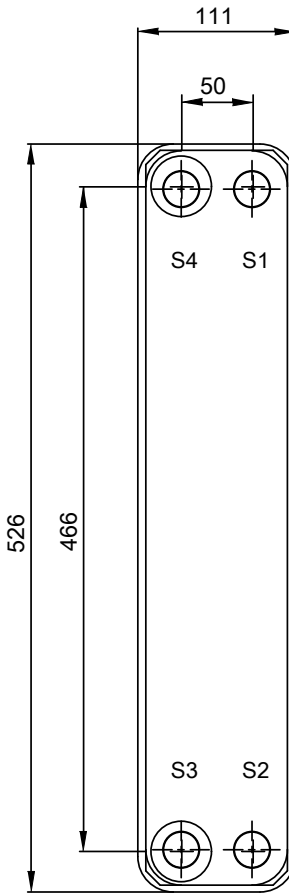
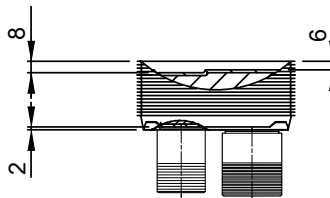
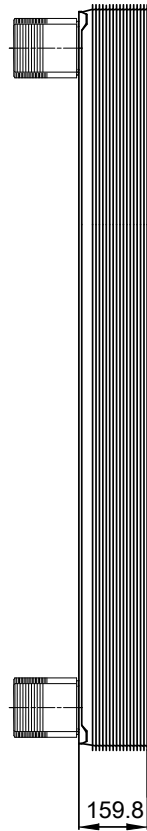
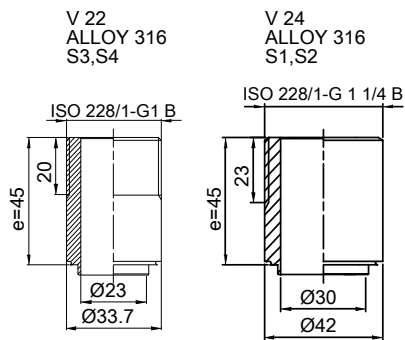


Note that all unique customer requirements (i.e tolerance) need to be verified thru Alfa Laval.



Frameplate is depressed 2 mm at connection S3/S4  
 Pressureplate is depressed 2 mm / even number of channel plates  
 at connections T3/T4 / uneven number of channel plates at  
 connections T1/T2.

AREA DI SCAMBIO TERM. null m<sup>2</sup>  
 PESO NETTO 15.6 kg  
 PESO IN ESERCIZIO Error kg  
 MATERIALE PIASTRE ALLOY 316  
 CONFIG. PIASTRE 1\*29H/1\*30H

T1 T2 T3 T4 locations on back side  
 correspond to S1 S2 S3 S4 on front side

TUTTE LE DIMENSIONI IN MILLIMETRI

LATO	FLUIDO	ENTRATA TEMP.	USCITA	TEMP.	PORTATA VOLUM.	PERDITA DI CARICO	V. DI LIQUIDO
1	Water	S1	S2	0.0 °C	0 kg/h	null kPa	2.9 dm <sup>3</sup>
2	Water	S3	S4	0.0 °C	0 kg/h	null kPa	2.8 dm <sup>3</sup>

PRESSURE VESSEL APPROVAL

PED



AlfaNova 52-60H (3288001266)

www.alfalaval.com

CLIENTE

LUNGHEZZA TOTALE 205 mm  
 LARGHEZZA TOTALE 111 mm  
 ALTEZZA TOTALE 526 mm

SOCIETÀ / RIF.  
 Lubetteam Hydraulic S.r.l.  
 Lubetteam Hydraulic S.r.l.



31/03/2017  
 REV 0