

AEGI
Collari di fissaggio
Serie DIN 3015 Part 1, 2, 3



 HYDRAULIC
COMPONENTS
& FLUID CONTAMINATION
CONTROL

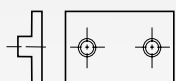


All trademarks belong to their respective owners; third party trademarks, product names, trade names, corporate names and company names mentioned may be trademarks of their respective owners or registered trademarks of other companies and are used for instructional purposes and for the benefit of the owner, without any end of Copyright infringement in force.

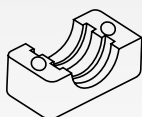
Tutti i marchi riportati appartengono ai legittimi proprietari; marchi di terzi, nomi di prodotti, nomi commerciali, nomi corporativi e società citati possono essere di proprietà dei rispettivi titolari o registrati da altre società e sono stati utilizzati a puro scopo esplicativo e a beneficio del possessore, senza alcun fine di violazione dei diritti di Copyright vigenti.

Collari completi serie standard con piastra superiore

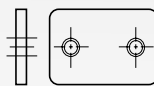
*Complete clamps standard series
with upper plate*



APIN
1



A.....S
2x



APS
1



AVTE
2x

A = polipropilene
polypropylene

MA = polyamide
self-extinguishing

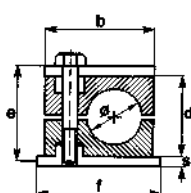
RA = gomma
rubber

LA = alluminio
aluminium

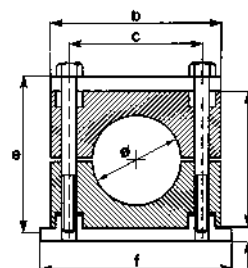
Collari serie standard con piastra superiore in polipropilene, poliammide autoestinguente, gomma o alluminio

Standard clamps with upper plate in polypropylene, self-extinguishing polyamide, rubber or aluminium

gruppo
group



gruppo
group

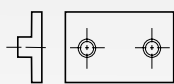


DIN gruppo group	diametro tubo pipe diameter		tipo di collare clamp type				dimensioni in mm dimension in mm						pezzi per confezione box quantity	
	Ø mm	pollici / inches G Ø O.D.	A polipropilene polypropylene	MA polyamide self-extinguishing	RA gomma rubber	LA alluminio aluminium	a	b	c	d	f	s		e
0	6		A0 06+APS	MA 0 06+APS	-	-	30	28	-	27	32	3	M6x30	50
	8	5/16"	A0 08+APS	MA0 08+APS	-	-								
	10	1/8"	A0 10+APS	MA0 10+APS	-	-								
	12		A0 12+APS	MA0 12+APS	-	-								
1	6		A1 06+APS	MA1 06+APS	RA1 06+APS	LA1 06+APS	30	35	20	27	42	3	M6x30	50
	6,4	1/4"	A1 6,4+APS	MA1 6,4+APS	RA1 6,4+APS	-								
	8	5/16"	A1 08+APS	MA1 08+APS	RA1 08+APS	LA1 08+APS								
	9,5	3/8"	A1 9,5+APS	MA1 9,5+APS	RA1 9,5+APS	-								
	10	1/8"	A1 10+APS	MA1 10+APS	RA1 10+APS	LA1 10+APS								
	12		A1 12+APS	MA1 12+APS	RA1 12+APS	LA1 12+APS								
2	12,7	1/2"	A2 12,7+APS	MA2 12,7+APS	RA2 12,7+APS	-	30	41	26	33	48	3	M6x35	50
	13,5	1/4"	A2 1/4"+APS	MA2 1/4"+APS	RA2 1/4"+APS	LA2 1/4"+APS								
	14		A2 14+APS	MA2 14+APS	RA2 14+APS	LA2 14+APS								
	15		A2 15+APS	MA2 15+APS	RA2 15+APS	LA2 15+APS								
	16	5/8"	A2 16+APS	MA2 16+APS	RA2 16+APS	LA2 16+APS								
	17,2	3/8"	A2 3/8"+APS	MA2 3/8"+APS	RA2 3/8"+APS	LA2 3/8"+APS								
	18		A2 18+APS	MA2 18+APS	RA2 18+APS	LA2 18+APS								
	19	3/4"	A2 19+APS	MA2 19+APS	RA2 19+APS	-								
3	19	3/4"	A3 19+APS	MA3 19+APS	RA3 19+APS	LA3 19+APS	30	48	33	35	55	3	M6x40	50
	20		A3 20+APS	MA3 20+APS	RA3 20+APS	LA3 20+APS								
	21,3	1/2"	A3 1/2"+APS	MA3 1/2"+APS	RA3 1/2"+APS	LA3 1/2"+APS								
	22	7/8"	A3 22+APS	MA3 22+APS	RA3 22+APS	LA3 22+APS								
	23		A3 23+APS	MA3 23+APS*	RA3 23+APS*	-								
	25		A3 25+APS	MA3 25+APS	RA3 25+APS	LA3 25+APS								
	25,4	1"	A3 25,4+APS	MA3 25,4+APS	RA3 25,4+APS	-								
4	26,9	3/4"	A4 3/4"+APS	MA4 3/4"+APS	RA4 3/4"+APS	LA4 3/4"+APS	30	57	40	42	62	3	M6x45	25
	28		A4 28+APS	MA4 28+APS	RA4 28+APS	LA4 28+APS								
	30		A4 30+APS	MA4 30+APS	RA4 30+APS	LA4 30+APS								
	32	1 1/4"	A4 32+APS	MA4 32+APS	RA4 32+APS	LA4 32+APS								
	32	1"	1 1/4"	A5 32+APS	MA5 32+APS	RA5 32+APS								
5	33,7		A5 1"+APS	MA5 1"+APS	RA5 1"+APS	LA5 1"+APS	30	69	52	58	74	3	M6x60	25
	35		A5 35+APS	MA5 35+APS	RA5 35+APS	LA5 35+APS								
	38	1 1/2"	A5 38+APS	MA5 38+APS	RA5 38+APS	LA5 38+APS								
	40		A5 40+APS	MA5 40+APS	RA5 40+APS	LA5 40+APS								
	42	1 1/4"	A5 11/4"+APS	MA5 11/4"+APS	RA5 11/4"+APS	LA5 11/4"+APS								
	45		A5 45+APS	MA5 45+APS	RA5 45+APS	LA5 45+APS								
	44,5	1 3/4"	A6 44,5+APS	MA6 44,5+APS	RA6 44,5+APS	LA6 44,5+APS								
6	48,3	1 1/2"	A6 11/2"+APS	MA6 11/2"+APS	RA6 11/2"+APS	LA6 11/2"+APS	30	86	66	66	88	3	M6x70	25
	50,8	2"	A6 50,8+APS	MA6 50,8+APS	RA6 50,8+APS	LA6 50,8+APS								

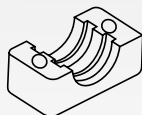
* on request with minimum quantity - articolo a richiesta con quantitativo minimo

Collari completi serie standard

Complete clamps standard series



APIN
1



A.....S
2x



AROND
2x



AVTC
2x

A = polipropilene
polypropylene

MA = polyamide
self-extinguishing

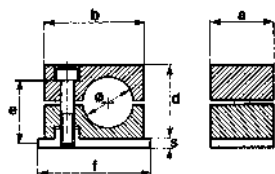
RA = gomma
rubber

LA = alluminio
aluminium

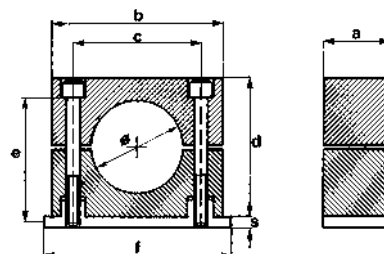
Collari serie standard in polipropilene,
poliammide autoestinguente, gomma o alluminio

*Standard clamps in polypropylene,
self-extinguishing polyamide, rubber or aluminium*

gruppo
group



gruppo
group

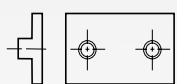


DIN gruppo group	diametro tubo pipe diameter		tipo di collare clamp type				dimensioni in mm dimension in mm							pezzi per confezione box quantity	
	Ø mm	pollici / inches G Ø O.D.	A polipropilene polypropylene	MA polyamide self-extinguishing	RA gomma rubber	LA alluminio aluminium	a	b	c	d	f	s	e		
0	6		A0 06	MA 0 06	-	-									50
	8		A0 08	MA0 08	-	-	30	28	-	27	31,5	3	M6x20		
	10	1/8"	A0 10	MA0 10	-	-									
	12		A0 12	MA0 12	-	-									
1	6		A1 06	MA1 06	RA1 06	LA1 06								50	
	6,4		A1 6,4	MA1 6,4	RA1 6,4	-	30	35	20	27	41	3	M6x20		
	8	1/4"	A1 08	MA1 08	RA1 08	LA1 08									
	9,5		A1 9,5	MA1 9,5	RA1 9,5	-									
	10	1/8"	A1 10	MA1 10	RA1 10	LA1 10									
	12		A1 12	MA1 12	RA1 12	LA1 12									
2	12,7	1/2"	A2 12,7	MA2 12,7	RA2 12,7	-								50	
	13,5	1/4"	A2 1/4"	MA2 1/4"	RA2 1/4"	LA2 1/4"	30	41	26	33	46	3	M6x25		
	14		A2 14	MA2 14	RA2 14	LA2 14									
	15		A2 15	MA2 15	RA2 15	LA2 15									
	16	5/8"	A2 16	MA2 16	RA2 16	LA2 16									
	17,2	3/8"	A2 3/8"	MA2 3/8"	RA2 3/8"	LA2 3/8"									
	18		A2 18	MA2 18	RA2 18	LA2 18									
	19	3/4"	A2 19	MA2 19	RA2 19	-									
3	19	3/4"	A3 19	MA3 19	RA3 19	LA3 19								50	
	20		A3 20	MA3 20	RA3 20	LA3 20									
	21,3	1/2"	A3 1/2"	MA3 1/2"	RA3 1/2"	LA3 1/2"	30	48	33	35	54	3	M6x30		
	22	7/8"	A3 22	MA3 22	RA3 22	LA3 22									
	23		A3 23	MA3 23*	RA3 23*	-									
	25		A3 25	MA3 25	RA3 25	LA3 25									
4	25,4		A3 25,4	MA3 25,4	RA3 25,4	-								25	
	26,9	3/4"	A4 3/4"	MA4 3/4"	RA4 3/4"	LA4 3/4"	30	57	40	42	61	3	M6x35		
	28		A4 28	MA4 28	RA4 28	LA4 28									
	30		A4 30	MA4 30	RA4 30	LA4 30									
	32	1 1/4"	A4 32	MA4 32	RA4 32	LA4 32									
5	32	1 1/4"	A5 32	MA5 32	RA5 32	LA5 32								25	
	33,7	1"	A5 1"	MA5 1"	RA5 1"	LA5 1"									
	35		A5 35	MA5 35	RA5 35	LA5 35									
	38	1 1/2"	A5 38	MA5 38	RA5 38	LA5 38	30	69	52	58	73	3	M6x50		
	40		A5 40	MA5 40	RA5 40	LA5 40									
	42	1 1/4"	A5 11/4"	MA5 11/4"	RA5 11/4"	LA5 11/4"									
	45		A5 45	MA5 45	RA5 45	LA5 45									
6	44,5	1 3/4"	A6 44,5	MA6 44,5	RA6 44,5	LA6 44,5								25	
	48,3	1 1/2"	A6 11/2"	MA6 11/2"	RA6 11/2"	LA6 11/2"	30	86	66	66	89	3	M6x60		
	50,8	2"	A6 50,8	MA6 50,8	RA6 50,8	LA6 50,8									

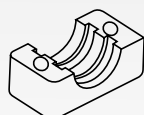
* on request with minimum quantity - articolo a richiesta con quantitativo minimo

Collari completi serie standard con piastra superiore raggruppato

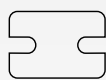
Complete stacking clamps standard series



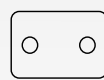
APIN
1



A.....S
4x



APMRS
1x



APS
1x



AVTE
2x



AVTEA
2x

A = polipropilene
polypropylene

MA = polyamide
self-extinguishing

RA = gomma
rubber

LA = alluminio
aluminium

A.....S



tipo H interno liscio
H model smooth inside



tipo normale interno sagomato
normal model profiled inside

DIN gruppo	semi-collare clamp-half	DIN gruppo	semi-collare clamp-half	
0	A0 06 S	3	A3 19 S	
	A0 08 S		A3 20 S	
	A0 10 S		A3 1/2" S	
	A0 12 S		A3 22 S	
1	A1 06 S	4	A3 23 S	
	A1 6,4 S		A3 25 S	
	A1 08 S		A3 25,4 S	
	A1 9,5 S		A4 3/4" S	
	A1 10 S		A4 28 S	
	A1 12 S		A4 30 S	
2	A2 12,7 S	5	A4 32 S	
	A2 1/4" S		A5 32 S	
	A2 14 S		A5 1" S	
	A2 15 S		A5 35 S	
	A2 16 S		A5 38 S	
	A2 3/8" S		A5 40 S	
	A2 18 S		A5 11/4" S	
	A2 19 S		A5 45 S	
	6			A6 44,5 S
				A6 11/2" S
		A6 50,8 S		

A.....C



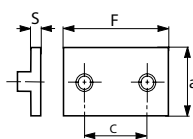
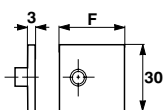
tipo H interno liscio
H model smooth inside



tipo normale interno sagomato
normal model profiled inside

DIN gruppo	coppia collari clamp body (2 halves)	DIN gruppo	coppia collari clamp body (2 halves)	
0	A0 06 C	3	A3 19 C	
	A0 08 C		A3 20 C	
	A0 10 C		A3 1/2" C	
	A0 12 C		A3 22 C	
1	A1 06 C	4	A3 23 C	
	A1 6,4 C		A3 25 C	
	A1 08 C		A3 25,4 C	
	A1 9,5 C		A4 3/4" C	
	A1 10 C		A4 28 C	
	A1 12 C		A4 30 C	
2	A2 12,7 C	5	A4 32 C	
	A2 1/4" C		A5 32 C	
	A2 14 C		A5 1" C	
	A2 15 C		A5 35 C	
	A2 16 C		A5 38 C	
	A2 3/8" C		A5 40 C	
	A2 18 C		A5 11/4" C	
	A2 19 C		A5 45 C	
	6			A6 44,5 C
				A6 11/2" C
		A6 50,8 C		

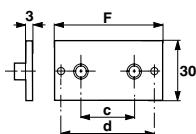
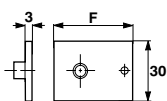
APIN



DIN gruppo
group **piastra inferiore**
lower plate

DIN gruppo group	APIN	F mm	c mm
0	APIN0	32	-
1	APIN1	41	20
2	APIN2	46	26
3	APIN3	54	33
4	APIN4	61	40
5	APIN5	73	52
6	APIN6	89	66

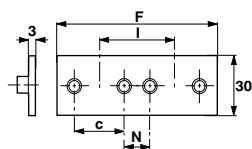
APIA



DIN gruppo
group **piastra inferiore allungata**
prolonged lower plate

DIN gruppo group	APIA	F mm	c mm	d mm
0	APIA0	46	-	-
1	APIA1	64	20	51
2	APIA2	70	26	56
3	APIA3	78	33	64
4	APIA4	87	40	73
5	APIA5	100	52	86
6	APIA6	115	66	100

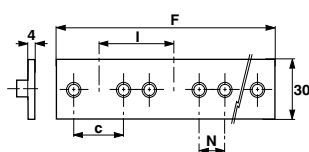
APID



piastra inferiore doppia
double lower plate

DIN gruppo group	APID	F mm	c mm	N mm	l mm	n° collari clamps
0	APID0	62	-	-	30	2
1	APID1	82	20	20	40	2
2	APID2	92	26	18	44	2
3	APID3	106	33	19	52	2
4	APID4	122	40	20	60	2
5	APID5	146	52	23	75	2
6	APID6	178	66	24	90	2

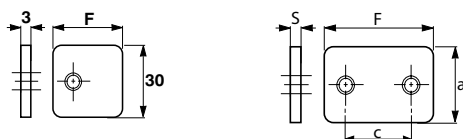
APIM



piastra inferiore multipla
multiple lower plate

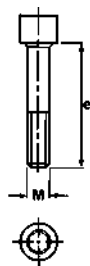
DIN gruppo group	APIM	F mm	c mm	N mm	l mm	n° collari clamps
0	APIM0	307	-	-	30	10
1	APIM1	410	20	20	40	10
2	APIM2	460	26	18	44	10
3	APIM3	540	33	19	52	10
4	APIM4	305	40	20	60	5
5	APIM5	365	52	23	75	5
6	APIM6	449	66	24	90	5

APS



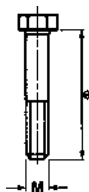
DIN gruppo group	piastra superiore upper plate		
	APS	F mm	c mm
0	APS0	28	-
1	APS1	37	20
2	APS2	43	26
3	APS3	50	33
4	APS4	57	40
5	APS5	69	52
6	APS6	83	66

AVTC



DIN gruppo group	vite a testa tonda esagono interno T.C.E.I. screws		
	AVTC	M	e mm
0	AVTC0	M6	20
1	AVTC1	M6	20
2	AVTC2	M6	25
3	AVTC3	M6	30
4	AVTC4	M6	35
5	AVTC5	M6	50
6	AVTC6	M6	60

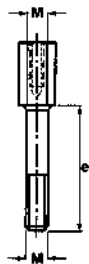
AVTE



DIN gruppo
group vite a testa esagonale
hexagonal head screw

	AVTE	M	e mm
0	AVTE0	M6	30
1	AVTE1	M6	30
2	AVTE2	M6	35
3	AVTE3	M6	40
4	AVTE4	M6	45
5	AVTE5	M6	60
6	AVTE6	M6	70

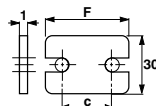
AVTEA



DIN gruppo
group vite a testa esag.
allungata
high hexeg. head
screw

	AVTEA	M	e mm
0	AVTEA0	M6	20
1	AVTEA1	M6	20
2	AVTEA2	M6	25
3	AVTEA3	M6	30
4	AVTEA4	M6	35
5	AVTEA5	M6	50
6	AVTEA6	M6	60

APMRS

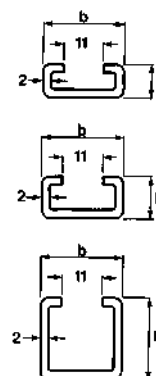


DIN gruppo
group

piastra superiore di sicurezza
security upper plate

	APMRS	F mm	c mm
0	APMRS0	28	-
1	APMRS1	34	20
2	APMRS2	41	26
3	APMRS3	47	33
4	APMRS4	57	40
5	APMRS5	67	52
6	APMRS6	82	66

ABINS

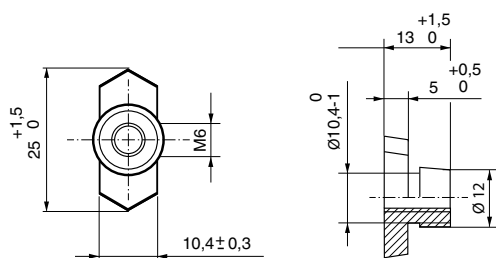


DIN gruppo
group

binari portanti
spessore 2 mm rail

	ABINS	B mm	H mm
1	ABINS-1	28	11
2	ABINS-2	28	14
3	ABINS-3	28	30

ADES-G

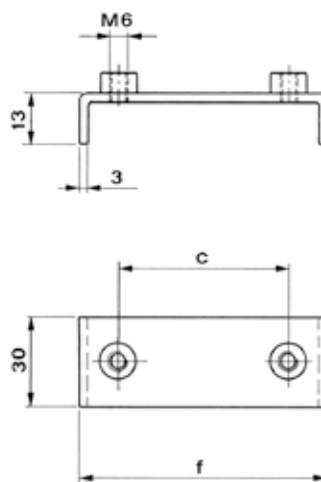
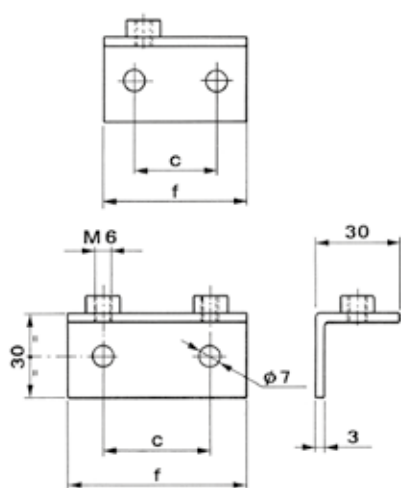


dado esagonale fissaggio binari
hexagonal nut

	ADES-G	M	∅ mm
	ADES-G	M6	12

Piastre speciali per serie standard

Special plates for standard series



piastra ad angolo
angled plate

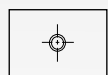
DIN gruppo group	APINL	c mm	f mm
0	APINL0	14	32
1	APINL1	20	42
2	APINL2	26	48
3	APINL3	33	55
4	APINL4	40	62
5	APINL5	52	74
6	APINL6	66	88

piastra ad angolo
angled plate

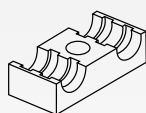
DIN gruppo group	APINB	c mm	f mm
0	APINB0	-	-
1	APINB1	20	49
2	APINB2	26	55
3	APINB3	33	63
4	APINB4	40	72
5	APINB5	52	86
6	APINB6	66	99

Collari completi serie doppia

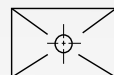
Complete clamp standard serie



ADPIN
1



AD...S
2x



ADPS
1x



ADVTE
1x

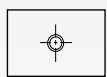
AD = polipropilene
polypropylene

MD = polyamide
self-extinguishing

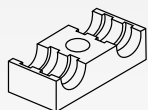
RD = gomma
rubber

Collari completi serie doppi raggruppati

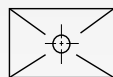
Complete stacking clamps double series



ADPIN
1



AD...S
4x



ADPS
1x



ADVTE
1x



APMRSD
1x



ADVTEA
1x

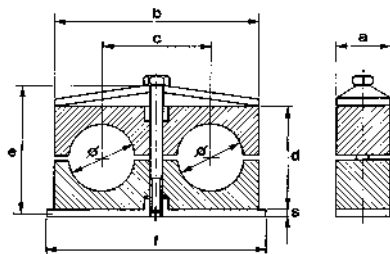
AD = polipropilene
polypropylene

MD = polyamide
self-extinguishing

RD = gomma
rubber

Collari doppi in polipropilene,
poliammide autoestinguente o gomma

*Double clamps in polypropylene,
self-extinguishing polyamide or rubber*



DIN gruppo group	diametro tubo pipe diameter		tipo di collare clamp type			dimensioni in mm dimension in mm							pezzi per confezione box quantity
	Ø mm	pollici / inches G Ø O.D.	AD polipropilene polypropylene	MD poliammide self-extinguishing	RD gomma rubber	a	b	c	d	f	s	e	
1	6-6		AD1 06-06	MD1 06-06	RD1 06-06	30	36	20	25	37	3	M6x35	50
	6,4-6,4	1/4 - 1/4"	AD1 6,4-6,4	MD1 6,4-6,4	RD1 6,4-6,4								
	8-8	5/16 - 5/16"	AD1 08-08	MD1 08-08	RD1 08-08								
	9,5-9,5	3/8 - 3/8"	AD1 9,5-9,5	MD1 9,5-9,5	RD1 9,5-9,5								
	10-10	1/8 - 1/8"	AD1 10-10	MD1 10-10	RD1 10-10								
	12-12		AD1 12-12	MD1 12-12	RD1 12-12								
2	12,7	1/2 - 1/2"	AD2 12,7-12,7	MD2 12,7-12,7	RD2 12,7-12,7	30	53	29	26	55	5	M8x35	50
	13,5	1/4 - 1/4"	AD2 1/4 - 1/4"	MD2 1/4 - 1/4"	RD2 1/4 - 1/4"								
	14-14		AD2 14-14	MD2 14-14	RD2 14-14								
	15-15		AD2 15-15	MD2 15-15	RD2 15-15								
	16-16	5/8 - 5/8"	AD2 16-16	MD2 16-16	RD2 16-16								
	17,2-17,2	3/8 - 3/8"	AD2 3/8 - 3/8"	MD2 3/8 - 3/8"	RD2 3/8 - 3/8"								
3	18-18		AD2 18-18	MD2 18-18	RD2 18-18	30	67	36	37	70	5	M8x45	50
	19-19	3/4 - 3/4"	AD3 19-19	MD3 19-19	RD3 19-19								
	20-20		AD3 20-20	MD3 20-20	RD3 20-20								
	21,3-21,3	1/2 - 1/2"	AD3 1/2 - 1/2"	MD3 1/2 - 1/2"	RD3 1/2 - 1/2"								
	22-22	7/8 - 7/8"	AD3 22-22	MD3 22-22	RD3 22-22								
	25-25		AD3 25-25	MD3 25-25	RD3 25-25								
4	25,4-25,4	1 - 1"	AD3 25,4-25,4	MD3 25,4-25,4	RD3 25,4-25,4	30	82	45	42	85	5	M8x50	25
	26,9	3/4 - 3/4"	AD4 3/4 - 3/4"	MD4 3/4 - 3/4"	RD4 3/4 - 3/4"								
	28-28		AD4 28-28	MD4 28-28	RD4 28-28								
	30-30		AD4 30-30	MD4 30-30	RD4 30-30								
5	32-32	1 1/4 - 1 1/4"	AD5 32-32	MD5 32-32	RD5 32-32	30	106	56	54	110	5	M8x60	25
	33,7-33,7	1 - 1"	AD5 1 - 1"	MD5 1 - 1"	RD5 1 - 1"								
	35-35		AD5 35-35	MD5 35-35	RD5 35-35								
	38-38	1 1/2 - 1 1/2"	AD5 38-38	MD5 38-38	RD5 38-38								
	40-40		AD5 40-40	MD5 40-40	RD5 40-40								
	42-42	1 1/4 - 1 1/4"	AD5 1 1/4 - 1 1/4"	MD5 1 1/4 - 1 1/4"	RD5 1 1/4 - 1 1/4"								

AD...S



tipo H interno liscio
H model smooth inside



tipo normale interno sagomato
normal model profiled inside

DIN gruppo	semi-collare <i>clamp-half</i>	DIN gruppo	semi-collare <i>clamp-half</i>
1	AD1 06-06 S	4	AD4 3/4 - 3/4" S
	AD1 6,4-6,4 S		AD4 28-28 S
	AD1 08-08 S		AD4 30-30 S
	AD1 9,5-9,5 S	5	AD5 32-32 S
	AD1 10-10 S		AD5 1 - 1" S
	AD1 12-12 S		AD5 35-35 S
AD2 12,7-12,7 S	AD5 38-38 S		
AD2 1/4 - 1/4" S	AD5 40-40 S		
2	AD2 14-14 S	5	AD5 11/4 - 1 1/4" S
	AD2 15-15 S		
	AD2 16-16 S		
	AD2 3/8 - 3/8" S		
	AD2 18-18 S		
	AD3 19-19 S		
3	AD3 20-20 S		
	AD3 1/2 - 1/2" S		
	AD3 22-22 S		
	AD3 25-25 S		
	AD3 25,4-25,4 S		

AD...C



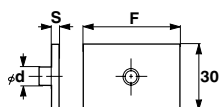
tipo H interno liscio
H model smooth inside



tipo normale interno sagomato
normal model profiled inside

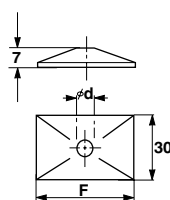
DIN gruppo	coppia-collare <i>clamp-body (2 halves)</i>	DIN gruppo	coppia-collare <i>clamp-body (2 halves)</i>
1	AD1 06-06 C	4	AD4 3/4 - 3/4" C
	AD1 6,4-6,4 C		AD4 28-28 C
	AD1 08-08 C		AD4 30-30 C
	AD1 9,5-9,5 C	5	AD5 32-32 C
	AD1 10-10 C		AD5 1 - 1" C
	AD1 12-12 C		AD5 35-35 C
AD2 12,7-12,7 C	AD5 38-38 C		
AD2 1/4 - 1/4" C	AD5 40-40 C		
2	AD2 14-14 C	5	AD5 11/4 - 1 1/4" C
	AD2 15-15 C		
	AD2 16-16 C		
	AD2 3/8 - 3/8" C		
	AD2 18-18 C		
	AD3 19-19 C		
3	AD3 20-20 C		
	AD3 1/2 - 1/2" C		
	AD3 22-22 C		
	AD3 25-25 C		
	AD3 25,4-25,4 C		

ADPIN



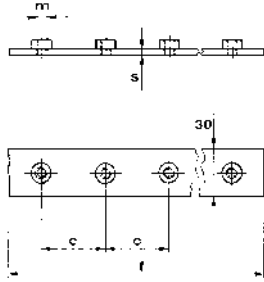
DIN gruppo group	piastra inferiore lower plate			
	ADPIN	F mm	Ø mm	S
1	ADPIN1	39	12	3
2	ADPIN2	55	14	5
3	ADPIN3	70	14	5
4	ADPIN4	85	14	5
5	ADPIN5	110	14	5

ADPS



DIN gruppo group	piastra superiore upper plate		
	ADPS	F mm	Ø mm
1	ADPS1	35	7
2	ADPS2	52	9
3	ADPS3	66	9
4	ADPS4	81	9
5	ADPS5	105	9

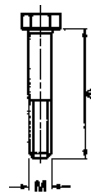
ADPIM



piastra inferiore multipla
multiple lower plate

DIN gruppo group	ADPIM	F	c	s	m	n° collari clamps
		mm	mm	mm	m	
1	ADPIM1	198	40	3	M6	5
2	ADPIM2	288	58	5	M8	5
3	ADPIM3	360	72	5	M8	5
4	ADPIM4	447	90	5	M8	5
5	ADPIM5	557	112	5	M8	5

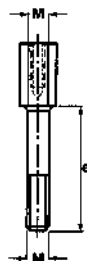
ADVTE



vite a testa esagonale
hexagonal head screw

DIN gruppo group	ADVTE	M	e
			mm
1	ADVTE1	M6	35
2	ADVTE2	M8	35
3	ADVTE3	M8	45
4	ADVTE4	M8	50
5	ADVTE5	M8	60

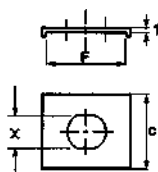
ADVTEA



DIN gruppo
group *vite a testa esag. allungata*
high hexeg. head screw

	ADVTEA	M	e mm
1	ADVTEA1	M6	25
2	ADVTEA2	M8	20
3	ADVTEA3	M8	29
4	ADVTEA4	M8	34
5	ADVTEA5	M8	47

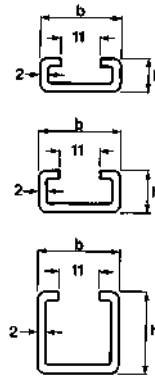
APMRSD



DIN gruppo
group *piastra superiore di sicurezza*
security upper plate

	APMRSD	F mm	c mm	d mm
1	APMRSD1	30	30	11
2	APMRSD2	30	30	13
3	APMRSD3	30	30	13
4	APMRSD4	30	30	13
5	APMRSD5	30	30	13

ABINS

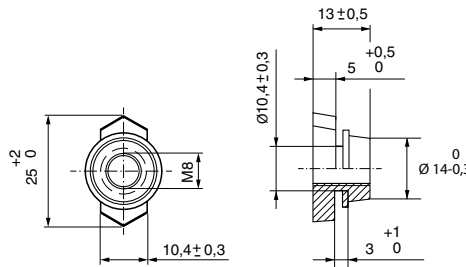


DIN gruppo
group

binari portanti
spessore 2 mm rail

	ABINS	B mm	H mm
1	ABINS-1	28	11
2	ABINS-2	28	14
3	ABINS-3	28	30

ADESD



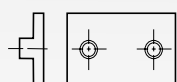
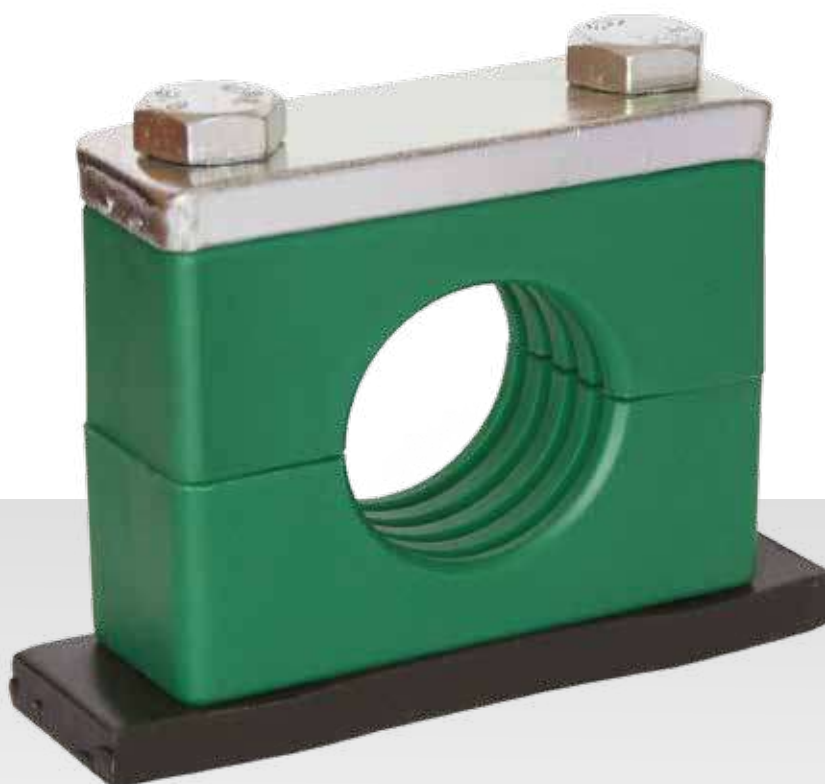
DIN gruppo
group

dado esagonale fissaggio binari
hexagonal nut

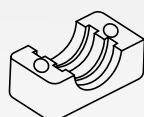
	ADES	M	∅ mm
1	ADES-G	M6	12
2	ADESD	M8	14

Collari completi serie pesante

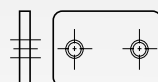
Complete clamps heavy duty series



APIN
1



AMP.P....S
2x



APSP
1



AVTEP
2x

AMP.P = polipropilene
polypropylene

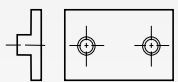
MMP.P = polyamide
self-extinguishing

RMP.P = gomma
rubber

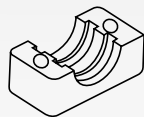
AMLL.P = alluminio
aluminium

Collari completo serie pesante raggruppato

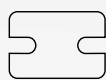
Complete stacking clamps heavy duty series



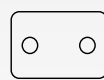
APINP
1



AMP.P....S
4x



APMRSP
1x



APSP
1x



AVTEP
2x



AVTEAP
2x

AMP.P = polipropilene
polypropylene

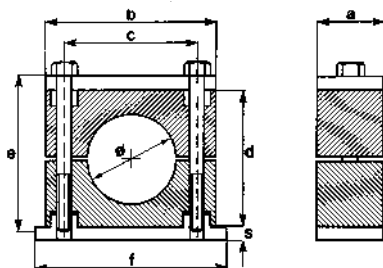
MMP.P = polyamide
self-extinguishing

RMP.P = gomma
rubber

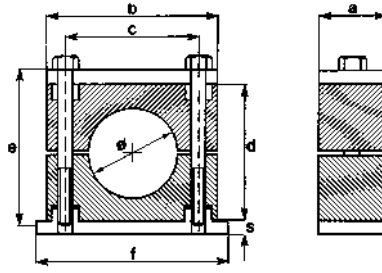
AMLL.P = alluminio
aluminium

Collari serie pesante in polipropilene,
poliammide autoestinguente, alluminio o gomma

*Heavy duty clamps in polypropylene,
self-extinguishing polyamide, aluminium or rubber*



DIN gruppo group	diametro tubo pipe diameter		tipo di collare clamp type				dimensioni in mm dimension in mm						
	Ø mm	pollici / inches G Ø O.D.	AMP.P polipropilene polypropylene	MMP.P polyamide self-extinguishing	RMP.P gomma rubber	AMLL.P alluminio aluminium	a	b	c	d	f	s	e
1	6		AMP.P1 06	MMP.P1 06	RMP.P1 06	AMLL.P1 06	30	55	33	32	73	8	M10x45
	6,4	1/4"	AMP.P1 6,4	MMP.P1 6,4	RMP.P1 6,4	AMLL.P1 6,4							
	8	5/16"	AMP.P1 08	MMP.P1 08	RMP.P1 08	AMLL.P1 08							
	9,5	3/8"	AMP.P1 9,5	MMP.P1 9,5	RMP.P1 9,5	AMLL.P1 9,5							
	10	1/8"	AMP.P1 10	MMP.P1 10	RMP.P1 10	AMLL.P1 10							
	12		AMP.P1 12	MMP.P1 12	RMP.P1 12	AMLL.P1 12							
	12,7	1/2"	AMP.P1 12,7	MMP.P1 12,7	RMP.P1 12,7	AMLL.P1 12,7							
	13,5	1/4"	AMP.P1 1/4"	MMP.P1 1/4"	RMP.P1 1/4"	AMLL.P1 1/4"							
	14		AMP.P1 14	MMP.P1 14	RMP.P1 14	AMLL.P1 14							
	15		AMP.P1 15	MMP.P1 15	RMP.P1 15	AMLL.P1 15							
2	16	5/8"	AMP.P1 16	MMP.P1 16	RMP.P1 16	AMLL.P1 16	30	70	45	48	102	8	M10x60
	17,2	3/8"	AMP.P1 3/8"	MMP.P1 3/8"	RMP.P1 3/8"	AMLL.P1 3/8"							
	18		AMP.P1 18	MMP.P1 18	RMP.P1 18	AMLL.P1 18							
	19	3/4"	AMP.P2 19	MMP.P2 19	RMP.P2 19	AMLL.P2 19							
	20		AMP.P2 20	MMP.P2 20	RMP.P2 20	AMLL.P2 20							
	21,3	1/2"	AMP.P2 1/2"	MMP.P2 1/2"	RMP.P2 1/2"	AMLL.P2 1/2"							
	22	7/8"	AMP.P2 22	MMP.P2 22	RMP.P2 22	AMLL.P2 22							
	25	1"	AMP.P2 25	MMP.P2 25	RMP.P2 25	AMLL.P2 25							
	25,4		AMP.P2 25,4	MMP.P2 25,4	RMP.P2 25,4	AMLL.P2 25,4							
	26,9	3/4"	AMP.P2 3/4"	MMP.P2 3/4"	RMP.P2 3/4"	AMLL.P2 3/4"							
3	28		AMP.P2 28	MMP.P2 28	RMP.P2 28	AMLL.P2 28	30	85	60	60	140	8	M10x70
	30		AMP.P2 30	MMP.P2 30	RMP.P2 30	AMLL.P2 30							
	30		AMP.P3 30	MMP.P3 30	RMP.P3 30	AMLL.P3 30							
	32	1 1/4"	AMP.P3 32	MMP.P3 32	RMP.P3 32	AMLL.P3 32							
	33,7	1"	AMP.P3 1"	MMP.P3 1"	RMP.P3 1"	AMLL.P3 1"							
	35		AMP.P3 35	MMP.P3 35	RMP.P3 35	AMLL.P3 35							
	38	1 1/2"	AMP.P3 38	MMP.P3 38	RMP.P3 38	AMLL.P3 38							
40		AMP.P3 40	MMP.P3 40	RMP.P3 40	AMLL.P3 40								
42	1 1/4"	AMP.P3 1 1/4"	MMP.P3 1 1/4"	RMP.P3 1 1/4"	AMLL.P3 1 1/4"								



DIN gruppo group	diametro tubo pipe diameter		tipo di collare clamp type				dimensioni in mm dimension in mm							
	Ø mm	pollici / inches G Ø O.D.	AMP.P polipropilene polypropylene	MMP.P polyamide self-extinguishing	RMP.P gomma rubber	AMLL.P alluminio aluminium	a	b	c	d	f	s	e	
4	38	1 1/2"	AMP.P4 38	MMP.P4 38	RMP.P4 38	AMLL.P4 38	45	115	90	90	140	10	M12X100	
	42	1 1/4"	AMP.P4 1 1/4"	MMP.P4 1 1/4"	RMP.P4 1 1/4"	AMLL.P4 1 1/4"								
	44,5	1 3/4"	AMP.P4 44,5	MMP.P4 44,5	RMP.P4 44,5	AMLL.P4 44,5								
	48,3	1 1/2"	AMP.P4 1 1/2"	MMP.P4 1 1/2"	RMP.P4 1 1/2"	AMLL.P4 1 1/2"								
	50		AMP.P4 50	MMP.P4 50	RMP.P4 50	AMLL.P4 50								
	50,8	2"	AMP.P4 50,8	MMP.P4 50,8	RMP.P4 50,8	AMLL.P4 50,8								
	55		AMP.P4 55	MMP.P4 55	RMP.P4 55	AMLL.P4 55								
	57	2 1/4"	AMP.P4 57	MMP.P4 57	RMP.P4 57	AMLL.P4 57								
	60,3	2"	AMP.P4 2"	MMP.P4 2"	RMP.P4 2"	AMLL.P4 2"								
	63,5	2 1/2"	AMP.P4 63,5	MMP.P4 63,5	RMP.P4 63,5	AMLL.P4 63,5								
	65		AMP.P4 65	MMP.P4 65	RMP.P4 65	AMLL.P4 65								
	70	2 3/4"	AMP.P4 70	MMP.P4 70	RMP.P4 70	AMLL.P4 70								
5	65		AMP.P5 65	MMP.P5 65	RMP.P5 65	AMLL.P5 65	60	152	122	120	180	10	M16X130	
	70	2 3/4"	AMP.P5 70	MMP.P5 70	RMP.P5 70	AMLL.P5 70								
	73		AMP.P5 73	MMP.P5 73	RMP.P5 73	-								
	75		AMP.P5 75	MMP.P5 75	RMP.P5 75	AMLL.P5 75								
	76,1	2 1/2"	3"	AMP.P5 2 1/2"	MMP.P5 2 1/2"	RMP.P5 2 1/2"								AMLL.P5 2 1/2"
	80			AMP.P5 80	MMP.P5 80	RMP.P5 80								AMLL.P5 80
	82,5		3 1/4"	AMP.P5 82,5	MMP.P5 82,5	RMP.P5 82,5								AMLL.P5 82,5
	88,9	3"	3 1/2"	AMP.P5 3"	MMP.P5 3"	RMP.P5 3"								AMLL.P5 3"
6	88,9	3"	3 1/2"	AMP.P6 3"	MMP.P6 3"	RMP.P6 3"	-	80	205	168	170	225	15	M20X190
	100			AMP.P6 100	MMP.P6 100	RMP.P6 100	-							
	101,6	3 1/2"	4"	AMP.P6 3 1/2"	MMP.P6 3 1/2"	RMP.P6 3 1/2"	-							
	108		4 1/4"	AMP.P6 108	MMP.P6 108	RMP.P6 108	-							
	114,3	4"	4 1/2"	AMP.P6 4"	MMP.P6 4"	RMP.P6 4"	-							
	127	4 1/2"	5"	AMP.P6 4 1/2"	MMP.P6 4 1/2"	RMP.P6 4 1/2"	-							
	133		5 1/2"	AMP.P6 133	MMP.P6 133	RMP.P6 133	-							
7	133		5 1/4"	AMP.P7 133	MMP.P7 133	RMP.P7 133	-	90	250	205	200	270	15	M24X220
	139,7	5"	5 1/2"	AMP.P7 5"	MMP.P7 5"	RMP.P7 5"	-							
	152,4	5 1/2"	6"	AMP.P7 5 1/2"	MMP.P7 5 1/2"	RMP.P7 5 1/2"	-							
	165		6 1/2"	AMP.P7 165	MMP.P7 165	RMP.P7 165	-							
	168,3	6"		AMP.P7 6"	MMP.P7 6"	RMP.P7 6"	-							
8	168,3	6"		AMP.P8 6"	-	-	-	120	320	265	270	340	25	M30X300
	177,8		7"	AMP.P8 177,8	-	-	-							
	193,7		7 5/8"	AMP.P8 193,7	-	-	-							
	216		8 1/2"	AMP.P8 216	-	-	-							
	219,1	8"		AMP.P8 8"	-	-	-							



tipo H interno liscio
H model smooth inside



tipo normale interno sagomato
normal model profiled inside

DIN gruppo group	semi-collare clamp-half	DIN gruppo group	semi-collare clamp-half	DIN gruppo group	semi-collare clamp-half
1	AMP.P1 06 S	4	AMP.P4 38 S	7	AMP.P7 133 S
	AMP.P1 6,4 S		AMP.P4 11/4" S		AMP.P7 5" S
	AMP.P1 08 S		AMP.P4 44,5 S		AMP.P7 5 1/2" S
	AMP.P1 9,5 S		AMP.P4 11/2" S		AMP.P7 165 S
	AMP.P1 10 S		AMP.P4 50 S		AMP.P7 6" S
	AMP.P1 12 S		AMP.P4 50,8 S		AMP.P8 6" S
	AMP.P1 12,7 S		AMP.P4 55 S		AMP.P8 177,8 S
	AMP.P1 1/4" S		AMP.P4 57 S		AMP.P8 193,7 S
	AMP.P1 14 S		AMP.P4 2" S		AMP.P8 216 S
	AMP.P1 15 S		AMP.P4 63,5 S		AMP.P8 8" S
	AMP.P1 16 S		AMP.P4 65 S		
AMP.P1 3/8" S	AMP.P4 70 S				
AMP.P1 18 S	AMP.P5 65 S				
2	AMP.P2 19 S	5	AMP.P5 70 S		
	AMP.P2 20 S		AMP.P5 73 S		
	AMP.P2 1/2" S		AMP.P5 75 S		
	AMP.P2 22 S		AMP.P5 2 1/2" S		
	AMP.P2 25 S		AMP.P5 80 S		
	AMP.P2 25,4 S		AMP.P5 82,5 S		
	AMP.P2 3/4" S		AMP.P5 3" S		
	AMP.P2 28 S		AMP.P6 3" S		
AMP.P2 30 S	AMP.P6 100 S				
3	AMP.P3 30 S	6	AMP.P6 3 1/2" S		
	AMP.P3 32 S		AMP.P6 108 S		
	AMP.P3 1" S		AMP.P6 4" S		
	AMP.P3 35 S		AMP.P6 4 1/2" S		
	AMP.P3 38 S		AMP.P6 133 S		
	AMP.P3 40 S				
AMP.P3 1 1/4" S					



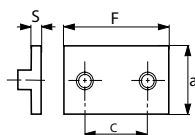
tipo H interno liscio
H model smooth inside



tipo normale interno sagomato
normal model profiled inside

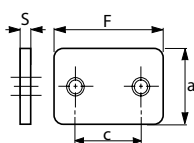
DIN gruppo group	coppia collare pair of halves	DIN gruppo group	coppia collare pair of halves	DIN gruppo group	coppia collare pair of halves
1	AMP.P1 06 C	4	AMP.P4 38 C	7	AMP.P7 133 C
	AMP.P1 6,4 C		AMP.P4 11/4" C		AMP.P7 5" C
	AMP.P1 08 C		AMP.P4 44,5 C		AMP.P7 5 1/2" C
	AMP.P1 9,5 C		AMP.P4 11/2" C		AMP.P7 165 C
	AMP.P1 10 C		AMP.P4 50 C		AMP.P7 6" C
	AMP.P1 12 C		AMP.P4 50,8 C		AMP.P8 6" C
	AMP.P1 12,7 C		AMP.P4 55 C		AMP.P8 177,8 C
	AMP.P1 1/4" C		AMP.P4 57 C	8	AMP.P8 193,7 C
	AMP.P1 14 C		AMP.P4 2" C	AMP.P8 216 C	
	AMP.P1 15 C		AMP.P4 63,5 C	AMP.P8 8" C	
	AMP.P1 16 C		AMP.P4 65 C		
	AMP.P1 3/8" C		AMP.P4 70 C		
	AMP.P1 18 C		AMP.P5 65 C		
	AMP.P2 19 C		AMP.P5 70 C		
AMP.P2 20 C	AMP.P5 73 C				
AMP.P2 1/2" C	AMP.P5 75 C				
AMP.P2 22 C	5	AMP.P5 2 1/2" C			
AMP.P2 25 C	AMP.P5 80 C				
AMP.P2 25,4 C	AMP.P5 82,5 C				
AMP.P2 3/4" C	AMP.P5 3" C				
AMP.P2 28 C	AMP.P6 3" C				
AMP.P2 30 C	AMP.P6 100 C				
AMP.P3 30 C	AMP.P6 3 1/2" C				
AMP.P3 32 C	6	AMP.P6 108 C			
AMP.P3 1" C	AMP.P6 4" C				
3	AMP.P6 4 1/2" C				
AMP.P3 35 C	AMP.P6 133 C				
AMP.P3 38 C					
AMP.P3 40 C					
AMP.P3 1 1/4" C					

APINP



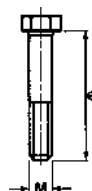
DIN gruppo group	piastra inferiore lower plate				
	APINP	a mm	F mm	c mm	S mm
1	APINP1	30	77	33	8
2	APINP2	30	87	45	8
3	APINP3	30	103	60	8
4	APINP4	45	140	90	10
5	APINP5	60	180	122	10
6	APINP6	80	225	168	15
7	APINP7	90	270	205	15
8	APINP8	120	340	265	25

APSP



DIN gruppo group	piastra superiore upper plate				
	APSP	a mm	F mm	c mm	S mm
1	APSP1	30	55	33	8
2	APSP2	30	70	45	8
3	APSP3	30	85	60	8
4	APSP4	45	120	90	10
5	APSP5	60	152	122	10
6	APSP6	80	205	168	15
7	APSP7	90	250	205	15
8	APSP8	120	320	265	25

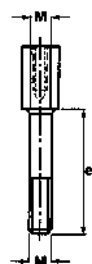
AVTEP



DIN gruppo
group vite a testa esagonale
hexagonal head screw

	AVTEP	M	e mm
1	AVTEP1	M10	45
2	AVTEP2	M10	60
3	AVTEP3	M10	70
4	AVTEP4	M12	100
5	AVTEP5	M16	130
6	AVTEP6	M20	190
7	AVTEP7	M24	220
8	AVTEP8	M30	300

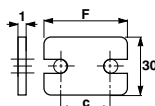
AVTEAP



DIN gruppo
group vite a testa esagonale
hexagonal head screw

	AVTEAP	M	e mm
1	AVTEAP1	M10	26
2	AVTEAP2	M10	41
3	AVTEAP3	M10	52
4	AVTEAP4	M12	83
5	AVTEAP5	M16	110

APMRSP

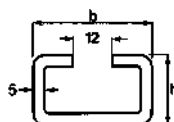


DIN gruppo
group

piastra superiore di sicurezza
security upper plate

	APMRSP	a mm	F mm	c mm	S mm
1	APMRSP1	30	55	33	8
2	APMRSP2	30	70	45	8
3	APMRSP3	30	85	60	8
4	APMRSP4	45	120	90	10
5	APMRSP5	60	152	122	10

ABINP

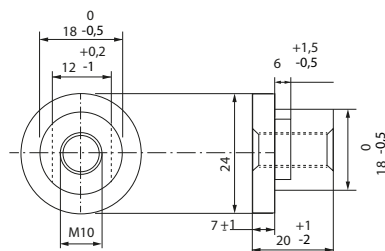


DIN gruppo
group

binari portanti
spessore 5 mm rail

	ABINP	b mm	h mm
1	ABINP1	40	22

ADESP



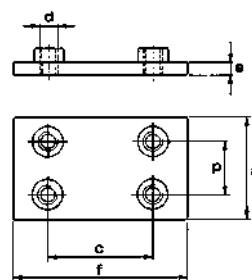
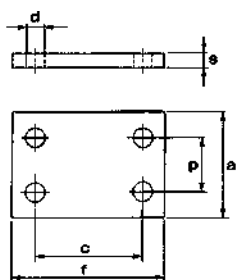
DIN gruppo
group

dado fissaggio binari
rail nut

	ADESP	M	ø mm
1	ADESP1	M10	18
2	ADESP2	M12	20

Piastre doppie per serie pesante

Double plates for heavy duty series



piastra superiore pesante doppia
heavy duty double upper plate

DIN gruppo group	APSPD	a	f	s	c	p	d
		mm	mm	mm	mm	mm	mm
1	APSPD1	60	55	8	33	31	11
2	APSPD2	60	70	8	45	31	11
3	APSPD3	60	85	8	60	31	11
4	APSPD4	90	120	10	90	46	14
5	APSPD5	120	154	10	122	61	18

piastra inferiore pesante doppia
heavy duty double lower plate

DIN gruppo group	APINPD	a	f	s	c	p	m
		mm	mm	mm	mm	mm	m
1	APINPD1	60	77	8	33	31	M10
2	APINPD2	60	87	8	45	31	M10
3	APINPD3	60	103	8	60	31	M10
4	APINPD4	90	140	10	90	46	M12
5	APINPD5	120	180	10	122	61	M16

LubeTeam Hydraulic S.r.l.

Administration and Headquarter:

Via Tufara Scautieri, 6

83018 - San Martino Valle Caudina (AV)

Office and Warehouse:

S.S. 7 Appia, Km. 237,00

82011 - Airola BN

ITALY

Tel. +39 0823 950 994

Fax +39 0823 412 546

www.lubeteam.it info@lubeteam.it

Italian VAT / C.F. e P.IVA: 01251720627

Follow us



This document is the property of LubeTeam Hydraulic S.r.l. All data reported here are for the exclusive use of the Receiver. Reproduction is not authorized without writing permission, in all or in part of the content of this document, in accordance to Law 633 art. 171, dated April 22, 1941.

Il presente documento è di proprietà della LubeTeam Hydraulic S.r.l. I dati riportati sono per esclusivo del destinatario. La riproduzione, di tutto o in parte, non è autorizzata senza permesso scritto secondo l'art. 171 della L. 633 del 22 Aprile 1941.