

STAUFF

Collari di fissaggio  
Collari serie leggera














 HYDRAULIC  
COMPONENTS  
& FLUID CONTAMINATION  
CONTROL



All trademarks belong to their respective owners; third party trademarks, product names, trade names, corporate names and company names mentioned may be trademarks of their respective owners or registered trademarks of other companies and are used for instructional purposes and for the benefit of the owner, without any end of Copyright infringement in force.

Tutti i marchi riportati appartengono ai legittimi proprietari; marchi di terzi, nomi di prodotti, nomi commerciali, nomi corporativi e società citati possono essere di proprietà dei rispettivi titolari o registrati da altre società e sono stati utilizzati a puro scopo esplicativo e a beneficio del possessore, senza alcun fine di violazione dei diritti di Copyright vigenti.

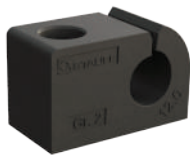


	<b>Clamp Body - Single Design</b> LBBU	112
	<b>Clamp Body - Twin Design</b> LBBU	113
	<b>Weld Plate</b> LBBU-SP	114
	<b>Sleeve</b> LBBU-HUE	114
	<b>Cover Plate</b> LBBU-DP	115
	<b>Hexagon Head Bolt</b> AS	115
	<b>Clamp Body - Single Design</b> LB	116
	<b>Clamp Body - Twin Design</b> LBG / LBU	117
	<b>Clamp Body - Single Design</b> LN	118
	<b>Clamp Body - Twin Design</b> LNGF / LNUF	119
	<b>Cover Plate</b> DPL	119





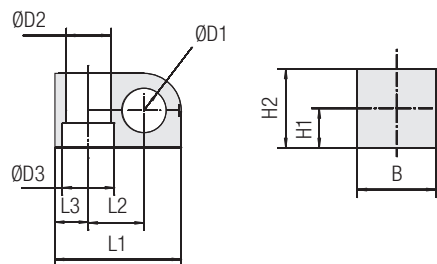
## Clamp Body - Single Design Type LBBU



Size 2 in slotted design



Size 1 and 3 with film hinge



### Ordering Codes

**Clamp Body** \*LBBU-\*1\*06-\*SA-\*M8/U5/16

- \* Light Series LBBU **LBBU**
- \* STAUFF Group **1**
- \* Exact outside diameter Ø D1 (mm) **06**
- \* Material code (see below) **SA**
- \* Thread code (suitable for bolts M8 and U5/16) **M8/U5/16**

### Standard Materials



**Thermoplastic Elastomer** (87 Shore-A)  
Colour: Black  
Material code: **SA**

See pages 154 / 155 for material properties and technical information.

Alternative materials are available upon request.  
Please contact STAUFF for further information.

### Product Features

- Compact and light-weight design for applications in which space is limited
- Available in 3 different sizes and covering all standard metric and imperial diameters between 4 mm and 32 mm
- Vibration-damping and noise-reducing clamp body material with UV, ozone and weathering-resistant characteristics
- Embedded metal sleeve to ensure stability of the clamp assembly

Group	Outside Diameter		Nominal Bore Pipe (in)	Ordering Codes (1 Clamp Body)	Dimensions (mm/in)												
	Pipe / Tube / Hose Ø D1 (mm)	(in)			Ø D2	Ø D3	L1	L2	L3	H1	H2	B					
1	6			LBBU-106-SA-M8/U5/16													
	6,4	1/4		LBBU-106.4-SA-M8/U5/16													
	8	5/16		LBBU-108-SA-M8/U5/16													
	9,5	3/8		LBBU-109.5-SA-M8/U5/16													
	10		1/8	LBBU-110-SA-M8/U5/16	.47	.55	1.34	.59	.35	.39	.79	.79					
	11			LBBU-111-SA-M8/U5/16													
	12			LBBU-112-SA-M8/U5/16													
	12,7	1/2		LBBU-112.7-SA-M8/U5/16													
	2	10		1/8	LBBU-210-SA-M8/U5/16												
		11			LBBU-211-SA-M8/U5/16												
12				LBBU-212-SA-M8/U5/16													
12,7		1/2		LBBU-212.7-SA-M8/U5/16													
13,5			1/4	LBBU-213.5-SA-M8/U5/16													
14				LBBU-214-SA-M8/U5/16	20	14	39	18	9	12	24	20					
15				LBBU-215-SA-M8/U5/16	.47	.55	1.54	.71	.35	.47	.94	.79					
16		5/8		LBBU-216-SA-M8/U5/16													
17,2			3/8	LBBU-217.2-SA-M8/U5/16													
18				LBBU-218-SA-M8/U5/16													
3	19	3/4		LBBU-219-SA-M8/U5/16													
	20			LBBU-220-SA-M8/U5/16													
	21,3			LBBU-321.3-SA-M8/U5/16													
	22	7/8		LBBU-322-SA-M8/U5/16													
	23			LBBU-323-SA-M8/U5/16													
	25			LBBU-325-SA-M8/U5/16	12	14	57,5	23,5	15	20	40	30					
	25,4	1		LBBU-325.4-SA-M8/U5/16	.47	.55	2.26	.93	.59	.79	1.57	1.18					
	28			LBBU-328-SA-M8/U5/16													
30			LBBU-330-SA-M8/U5/16														
32	1-1/4		LBBU-332-SA-M8/U5/16														

Additional outside diameters are available upon request. Please contact STAUFF for further information.



#### Type of Mounting SP (with Weld Plate LBBU-SP)

- Clamp assembly consisting of:
- 1 Hexagon Head Bolt AS
  - 1 Cover Plate LBBU-DP
  - 1 Sleeve LBBU-HUE
  - 1 Clamp Body LBBU
  - 1 Weld Plate LBBU-SP

**Order Code**  
**LBBU-SP-322-SA-DP-AS-M8-W10**

**W10** (Weld Plate made of Carbon Steel, phosphated; Other metal parts made of Carbon Steel, zinc/nickel-plated) is the standard option for this type of installation.  
For UNC threads / bolts, please replace M8 by U5/16.



#### Type of Mounting SM (with Hexagon Rail Nut SM-2-5D)

- Clamp assembly consisting of:
- 1 Hexagon Head Bolt AS
  - 1 Cover Plate LBBU-DP
  - 1 Sleeve LBBU-HUE
  - 1 Clamp Body LBBU
  - 1 Hexagon Rail Nut SM-2-5D (for use with Mounting Rail TS, see page 24 for details)

**Order Code** (Mounting Rail TS not included.)  
**LBBU-SM-322-SA-DP-AS-M8-W3**

**W3** (Metal parts made of Carbon Steel, zinc/nickel-plated) is the standard option for this type of installation.  
For UNC threads / bolts, please replace M8 by U5/16.



#### Type of Mounting PM (for panel mounting without Weld Plate or Hexagon Rail Nut)

- Clamp assembly consisting of:
- 1 Hexagon Head Bolt AS
  - 1 Cover Plate LBBU-DP
  - 1 Sleeve LBBU-HUE
  - 1 Clamp Body LBBU

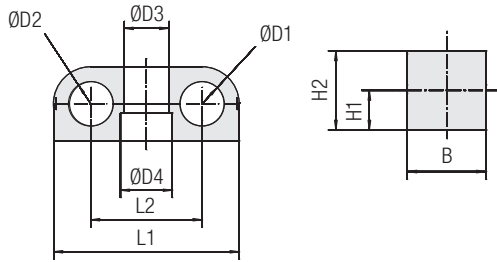
**Order Code**  
**LBBU-PM-322-SA-DP-AS-M8-W3**

**W3** (Metal parts made of Carbon Steel, zinc/nickel-plated) is the standard option for this type of installation.  
For UNC threads / bolts, please replace M8 by U5/16.

Alternative sizes (e.g. for bolts M6 and 1/4–20 UNC), materials and surface finishings are available upon request.



Clamp Body - Twin Design  
Type LBBU



Size 1 and 3 with film hinge



Size 2 in slotted design

Group	Outside Diameters Pipe / Tube / Hose Ø D1 / Ø D2 STAUFF (mm) (in)	Nominal Bore Pipe (in)	Ordering Codes (1 Clamp Body)	Dimensions (mm/in)								
				Ø D3	Ø D4	L1	L2	H1	H2	B		
1D	4		LBBU-104/04-SA-M8/U5/16									
	6		LBBU-106/06-SA-M8/U5/16									
	6,4	1/4	LBBU-106.4/06.4-SA-M8/U5/16									
	8	5/16	LBBU-108/08-SA-M8/U5/16									
	9,5	3/8	LBBU-109.5/09.5-SA-M8/U5/16	12	14	50	30	10	20	20		
	10		LBBU-110/10-SA-M8/U5/16	.47	.55	1.97	1.18	.39	.79	.79		
	11		LBBU-111/11-SA-M8/U5/16									
	12		LBBU-112/12-SA-M8/U5/16									
2D	12,7	1/2	LBBU-112.7/12.7-SA-M8/U5/16									
	10		LBBU-210/10-SA-M8/U5/16									
	11		LBBU-211/11-SA-M8/U5/16									
	12		LBBU-212/12-SA-M8/U5/16									
	12,7	1/2	LBBU-212.7/12.7-SA-M8/U5/16									
	13,5	1/4	LBBU-213.5/13.5-SA-M8/U5/16									
	14		LBBU-214/14-SA-M8/U5/16	12	14	59	35	12	24	20		
	15		LBBU-215/15-SA-M8/U5/16	.47	.55	2.32	1.38	.47	.94	.79		
	16	5/8	LBBU-216/16-SA-M8/U5/16									
	17,2		LBBU-217.2/17.2-SA-M8/U5/16									
3D	18		LBBU-218/18-SA-M8/U5/16									
	19	3/4	LBBU-219/19-SA-M8/U5/16									
	20		LBBU-220/20-SA-M8/U5/16									
	21,3		LBBU-321.321.3-SA-M8/U5/16									
	22	7/8	LBBU-322/22-SA-M8/U5/16									
	23		LBBU-323/23-SA-M8/U5/16									
	25		LBBU-325/25-SA-M8/U5/16	12	14	86	47	20	40	30		
	25,4	1	LBBU-325.4/25.4-SA-M8/U5/16	.47	.55	3.39	1.85	.79	1.57	.79		
28		LBBU-328/28-SA-M8/U5/16										
30		LBBU-330/30-SA-M8/U5/16										
32	1-1/4	LBBU-332/32-SA-M8/U5/16										

Ordering Codes

Clamp Body \*LBBU-\*1\*06/06-\*SA-\*M8/U5/16

- \* Light Series LBBU LBBU
- \* 1st Part of STAUFF Group 1
- \* Exact outside diameters Ø D1 / Ø D2 (mm) 06/06
- \* Material code (see below) SA
- \* Thread code (suitable for bolts M8 and U5/16) M8/U5/16

Standard Materials

**Thermoplastic Elastomer** (87 Shore-A)  
Colour: Black  
Material code: **SA**

See pages 154 / 155 for material properties and technical information.

Alternative materials are available upon request. Please contact STAUFF for further information.

Product Features

- Compact and light-weight design for applications in which space is limited
- Available in 3 different sizes and covering all standard metric and imperial diameters between 4 mm and 32 mm
- Vibration-damping and noise-reducing clamp body material with UV, ozone and weathering-resistant characteristics
- Embedded metal sleeve to ensure stability of the clamp assembly

Additional outside diameters and combinations of different outside diameters are available upon request. Please contact STAUFF for further information.

**Type of Mounting SP**  
(with Weld Plate LBBU-SP)

Clamp assembly consisting of:

- 1 Hexagon Head Bolt AS
- 1 Cover Plate LBBU-DP
- 1 Sleeve LBBU-HUE
- 1 Clamp Body LBBU
- 1 Weld Plate LBBU-SP

**Order Code**  
**LBBU-SP-322/22-SA-DP-AS-M8-W10**  
W10 (Weld Plate made of Carbon Steel, phosphated; Other metal parts made of Carbon Steel, zinc/nickel-plated) is the standard option for this type of installation.  
For UNC threads / bolts, please replace M8 by U5/16.

**Type of Mounting SM**  
(with Hexagon Rail Nut SM-2-5D)

Clamp assembly consisting of:

- 1 Hexagon Head Bolt AS
- 1 Cover Plate LBBU-DP
- 1 Sleeve LBBU-HUE
- 1 Clamp Body LBBU
- 1 Hexagon Rail Nut SM-2-5D (for use with Mounting Rail TS, see page 24 for details)

**Order Code** (Mounting Rail TS not included.)  
**LBBU-SM-322/22-SA-DP-AS-M8-W3**  
W3 (Metal parts made of Carbon Steel, zinc/nickel-plated) is the standard option for this type of installation.  
For UNC threads / bolts, please replace M8 by U5/16.

**Type of Mounting PM**  
(for panel mounting without Weld Plate or Hexagon Rail Nut)

Clamp assembly consisting of:

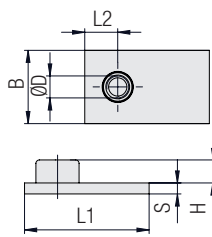
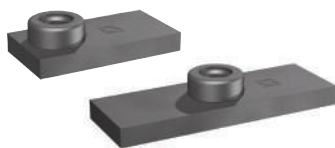
- 1 Hexagon Head Bolt AS
- 1 Cover Plate LBBU-DP
- 1 Sleeve LBBU-HUE
- 1 Clamp Body LBBU

**Order Code**  
**LBBU-PM-322/22-SA-DP-AS-M8-W3**  
W3 (Metal parts made of Carbon Steel, zinc/nickel-plated) is the standard option for this type of installation.  
For UNC threads / bolts, please replace M8 by U5/16.

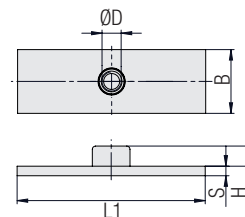
Alternative sizes (e.g. for bolts M6 and 1/4–20 UNC), materials and surface finishings are available upon request.



**Weld Plate**  
**Type LBBU-SP**



STAUFF Group 1 to 3



STAUFF Group 1D to 3D

**Ordering Codes**

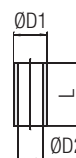
**Weld Plate**      \*LBBU-SP-\*1D-\*M8-\*W2

- \* Light Series LBBU **LBBU**
- \* Weld Plate **-SP**
- \* STAUFF Group **1D**
- \* Thread code    Metric ISO thread: M8 **M8**  
                          UNC thread: 5/16-18 UNC **U5/16**
- \* Material code    Carbon Steel, phosphated **W2**

Group STAUFF	Dimensions (mm/in)						Thread G	Ordering Codes (Standard Options)
	Ø D	L1	L2	H	B	S		
1	14	34	9	10,3	20	5	M8	LBBU-SP-1-M8-W2
	.55	1.34	.35	.41	.79	.20	5/16-18 UNC	LBBU-SP-1-U5/16-W2
2	14	39	9	10,3	20	5	M8	LBBU-SP-2-M8-W2
	.55	1.54	.35	.41	.79	.20	5/16-18 UNC	LBBU-SP-2-U5/16-W2
3	14	57,5	15	10,3	30	5	M8	LBBU-SP-3-M8-W2
	.55	2.26	.59	.41	1.18	.20	5/16-18 UNC	LBBU-SP-3-U5/16-W2
1D	14	50	X	10,3	20	5	M8	LBBU-SP-1D-M8-W2
	.55	1.97		.41	.79	.20	5/16-18 UNC	LBBU-SP-1D-U5/16-W2
2D	14	59		10,3	20	5	M8	LBBU-SP-2D-M8-W2
	.55	2.32		.41	.79	.20	5/16-18 UNC	LBBU-SP-2D-U5/16-W2
3D	14	86		10,3	30	5	M8	LBBU-SP-3D-M8-W2
	.55	3.39		.41	1.18	.20	5/16-18 UNC	LBBU-SP-3D-U5/16-W2

All threaded parts are available with Metric ISO thread or unified coarse (UNC) thread according to dimension table. Alternative sizes (e.g. for bolts M6 and 1/4-20 UNC), materials and surface finishings are available upon request.

**Sleeve**  
**Type LBBU-HUE**



Dimensions applicable only when used with Weld Plate LBBU-SP (**Type of Mounting SP**)

Dimensions applicable only when used with Hexagon Rail Nut SM-2-5D (**Type of Mounting SM**)

Dimensions applicable only when used for panel mounting without Weld Plate or Hexagon Rail Nut (**Type of Mounting PM**)

Group STAUFF	Dimensions (mm/in)			Ordering Codes (Standard Options)
	ØD1	ØD2	L	
1	12	9	13,5	LBBU-HUE-1/1D-SP-M8/U5/16-W3
	.47	.35	.53	
2	12	9	17,5	LBBU-HUE-2/2D-SP-M8/U5/16-W3
	.47	.35	.69	
3	12	9	33,5	LBBU-HUE-3/3D-SP-M8/U5/16-W3
	.47	.35	1.32	
1D	12	9	13,5	LBBU-HUE-1/1D-SP-M8/U5/16-W3
	.47	.35	.53	
2D	12	9	17,5	LBBU-HUE-2/2D-SP-M8/U5/16-W3
	.47	.35	.69	
3D	12	9	33,5	LBBU-HUE-3/3D-SP-M8/U5/16-W3
	.47	.35	1.32	

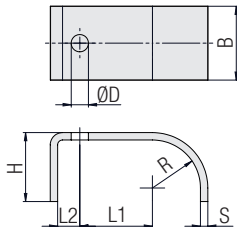
Group STAUFF	Dimensions (mm/in)			Ordering Codes (Standard Options)
	ØD1	ØD2	L	
1	12	9	12,8	LBBU-HUE-1/1D-SM-M8/U5/16-W3
	.47	.35	.50	
2	12	9	16,8	LBBU-HUE-2/2D-SM-M8/U5/16-W3
	.47	.35	.66	
3	12	9	32,8	LBBU-HUE-3/3D-SM-M8/U5/16-W3
	.47	.35	1.29	
1D	12	9	12,8	LBBU-HUE-1/1D-SM-M8/U5/16-W3
	.47	.35	.50	
2D	12	9	16,8	LBBU-HUE-2/2D-SM-M8/U5/16-W3
	.47	.35	.66	
3D	12	9	32,8	LBBU-HUE-3/3D-SM-M8/U5/16-W3
	.47	.35	1.29	

Group STAUFF	Dimensions (mm/in)			Ordering Codes (Standard Options)
	ØD1	ØD2	L	
1	12	9	18,8	LBBU-HUE-1/1D-PM-M8/U5/16-W3
	.47	.35	.74	
2	12	9	22,7	LBBU-HUE-2/2D-PM-M8/U5/16-W3
	.47	.35	.89	
3	12	9	38,8	LBBU-HUE-3/3D-PM-M8/U5/16-W3
	.47	.35	1.53	
1D	12	9	18,8	LBBU-HUE-1/1D-PM-M8/U5/16-W3
	.47	.35	.74	
2D	12	9	22,7	LBBU-HUE-2/2D-PM-M8/U5/16-W3
	.47	.35	.89	
3D	12	9	38,8	LBBU-HUE-3/3D-PM-M8/U5/16-W3
	.47	.35	1.53	

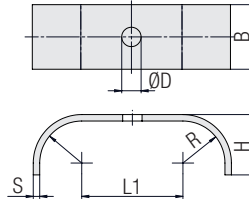
Alternative sizes (e.g. for bolts M6 and 1/4-20 UNC), materials and surface finishings are available upon request.



Cover Plate  
Type LBBU-DP



STAUFF Group 1 to 3



STAUFF Group 1D to 3D



Group STAUFF	Dimensions (mm/in)							Ordering Codes (Standard Options)
	Ø D	L1	L2	R	H	B	S	
1	9	15	9	10	16	20	3	LBBU-DP-1-M8/U5/16-W3
	.35	.59	.35	.39	.63	.79	.12	
2	9	18	9	12	20	20	3	LBBU-DP-2-M8/U5/16-W3
	.35	.71	.35	.47	.79	.79	.12	
3	9	23,5	15	19,5	28	30	3	LBBU-DP-3-M8/U5/16-W3
	.35	.93	.59	.77	1.10	1.18	.12	
1D	9	30	X	10	16	20	3	LBBU-DP-1D-M8/U5/16-W3
	.35	1.18		.39	.63	.79	.12	
2D	9	35		12	20	20	3	LBBU-DP-2D-M8/U5/16-W3
	.35	1.38		.47	.79	.79	.12	
3D	9	47	19,5	28	20	3	LBBU-DP-3D-M8/U5/16-W3	
	.35	1.85	.77	.63	.79	.12		

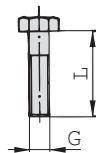
Ordering Codes

Cover Plate \*LBBU-DP-\*1D-\*M8/U5/16-\*W3

- \* Light Series LBBU LBBU
- \* Cover Plate -DP
- \* STAUFF Group 1D
- \* Thread code (suitable for bolts M8 and U5/16) M8/U5/16
- \* Material code Carbon Steel, zinc/nickel-plated W3

Alternative sizes (e.g. for bolts M6 and 1/4-20 UNC), materials and surface finishings are available upon request.

Hexagon Head Bolt  
Type AS



Hexagon Head Bolt AS

(according to DIN 931 / 933 or ANSI / ASME B18.2.1.)  
Dimensions applicable only when used with  
Weld Plate LBBU-SP (Type of Mounting SP)  
or Hexagon Rail Nut SM-2-5D (Type of Mounting SM)

Hexagon Head Bolt AS

(according to DIN 931 / 933 or ANSI / ASME B18.2.1.)  
Dimensions applicable only when used for panel mounting  
without Weld Plate or Hexagon Rail Nut  
(Type of Mounting PM)



Group STAUFF	Dimensions (mm/in) Thread G x L	Ordering Codes (Standard Options)
1	M8 x 25	AS-M8x25-W3
	5/16-18 UNC x 1	AS-U5/16-18x1-W3
2	M8 x 28	AS-M8x28-W3
	5/16-18 UNC x 1-1/8	AS-U5/16-18x1-1/8-W3
3	M8 x 45	AS-M8x45-W3
	5/16-18 UNC x 1-3/4	AS-U5/16-18x1-3/4-W3
1D	M8 x 25	AS-M8x25-W3
	5/16-18 UNC x 1	AS-U5/16-18x1-W3
2D	M8 x 28	AS-M8x28-W3
	5/16-18 UNC x 1-1/8	AS-U5/16-18x1-1/8-W3
3D	M8 x 45	AS-M8x45-W3
	5/16-18 UNC x 1-3/4	AS-U5/16-18x1-3/4-W3

Group STAUFF	Dimensions (mm/in) Thread G x L	Ordering Codes (Standard Options)
1	M8 x 30	AS-M8x30-W3
	5/16-18 UNC x 1-1/4	AS-U5/16-18x1-1/4-W3
2	M8 x 35	AS-M8x35-W3
	5/16-18 UNC x 1-3/8	AS-U5/16-18x1-3/8-W3
3	M8 x 50	AS-M8x50-W3
	5/16-18 UNC x 2	AS-U5/16-18x2-W3
1D	M8 x 30	AS-M8x30-W3
	5/16-18 UNC x 1-1/4	AS-U5/16-18x1-1/4-W3
2D	M8 x 35	AS-M8x35-W3
	5/16-18 UNC x 1-3/8	AS-U5/16-18x1-3/8-W3
3D	M8 x 50	AS-M8x50-W3
	5/16-18 UNC x 2	AS-U5/16-18x2-W3

Ordering Codes

Hexagon Head Bolt \*AS-\*M8x25-\*W3

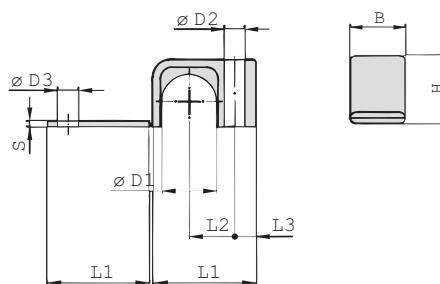
- \* Type of bolt Hexagon Head Bolt (according to DIN 931 / 933 or ANSI / ASME B18.2.1.) AS
- \* Thread code Thread dimension according to dimension table M8x25
- \* Material code Carbon Steel, zinc/nickel-plated W3

All threaded parts are available with Metric ISO thread or unified coarse (UNC) thread according to dimension table.  
Alternative sizes (e.g. for bolts M6 and 1/4-20 UNC), materials and surface finishings are available upon request.





## Clamp Body - Single Design Type LB



### Ordering Codes

#### Clamp Body

**\*LB-\*1\*03.2-\*PP**

- \* Light Series: Clamp Body / Single Design **LB**
- \* STAUFF Group **1**
- \* Exact outside diameter Ø D1 (mm) **03.2**
- \* Material code (see below) **PP**

### Standard Materials



**Polypropylene**  
Colour: Black  
Material code: **PP**



**Polyamide**  
Colour: Yellow  
Material code: **PA**

See pages 154 / 155 for material properties and technical information.

Alternative materials are available upon request. Please contact STAUFF for further information.

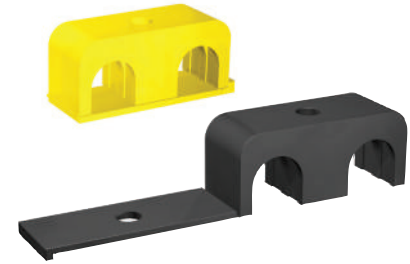
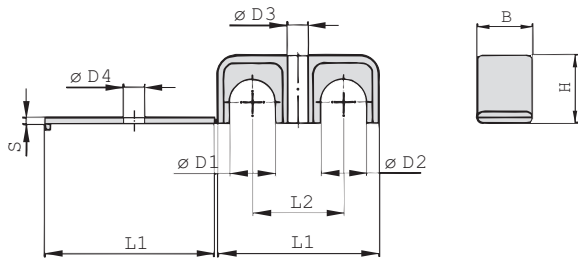
### Applications

- Pneumatics, Instrumentation and Automotive Technology, Machine Tool Industry, Lubrication, Mechanical Engineering

Group	Outside Diameter Pipe / Tube / Hose		Nominal Bore Pipe (in)	Ordering Codes (1 Clamp Body) (** = Material)	Dimensions (mm/in)									
	Ø D1 (mm)	(in)			L1	L2	L3	B	H	S	Ø D2	Ø D3		
1	3,2	1/8		LB-103.2-**-**										
	6			LB-106-**-**	22	9	6,5	12	10,5	2	6,8	7		
	6,4	1/4		LB-106.4-**-**	.87	.35	.26	.47	.41	.08	.27	.28		
	8			LB-108-**-**										
2	9,5	3/8		LB-209.5-**-**										
	10		1/8	LB-210-**-**	27	11	7	16	15	2	6,8	7		
	11,1			LB-211.1-**-**	1.06	.43	.28	.63	.59	.08	.27	.28		
3	12			LB-212-**-**										
	12,7	1/2		LB-312.7-**-**										
	13,5		1/4	LB-313.5-**-**										
	14			LB-314-**-**										
	15			LB-315-**-**	34	15	7	20	22,5	2	6,8	7		
	16	5/8		LB-316-**-**	1.34	.59	.28	.79	.89	.08	.27	.28		
4	17,2		3/8	LB-317.2-**-**										
	18			LB-318-**-**										
	19	3/4		LB-419-**-**										
	20			LB-420-**-**										
	21,3		1/2	LB-421.3-**-**	42	19	7	20	30	2	6,8	7		
	22			LB-422-**-**	1.65	.75	.28	.79	1.18	.08	.27	.28		
25			LB-425-**-**											
25,4	1		LB-425.4-**-**											

Additional outside diameters are available upon request. Please contact STAUFF for further information.



**Clamp Body - Twin Design  
Types LBG / LBU**


Group	Outside Diameters		Nominal Bore Pipe	Ordering Codes (1 Clamp Body)	Dimensions (mm/in)							
	Pipe / Tube / Hose Ø D1 / Ø D2 (mm)	(in)			(in)	(** = Material)	L1	L2	B	H	S	Ø D3
1	3,2	1/8		LBG-103.2/03.2-**								
	6			LBG-106/06-**	31	18	12	10,5	2	6,8	7	
	6,4	1/4		LBG-106.4/06.4-**	1.22	.71	.47	.41	.08	.27	.28	
	8			LBG-108/08-**								
2	9,5	3/8		LBG-209.5/09.5-**								
	10		1/8	LBG-210/10-**	39	22	16	15	2	6,8	7	
	11,1			LBG-211.1/11.1-**	1.54	.87	.63	.59	.08	.27	.28	
	12			LBG-212/12-**								
3	12,7	1/2		LBG-312.7/12.7-**								
	13,5		1/4	LBG-313.5/13.5-**								
	14			LBG-314/14-**	53	30	20	22,5	2	6,8	7	
	15			LBG-315/15-**	2.09	1.18	.79	.89	.08	.27	.28	
	16	5/8		LBG-316/16-**								
	17,2		3/8	LBG-317.2/17.2-**								
4	18			LBG-318/18-**								
	19	3/4		LBG-419/19-**								
	20			LBG-420/20-**								
	21,3		1/2	LBG-421.3/21.3-**	70	38	20	30	2	6,8	7	
	22			LBG-422/22-**	2.76	1.50	.79	1.18	.08	.27	.28	
	25			LBG-425/25-**								
	25,4	1		LBG-425.4/25.4-**								

**Ordering Codes**
**Clamp Body \*LBG-\*1\*03.2/03.2-\*PP**

- \* Light Series: Clamp Body / Twin Design with identical diameters **LBG**
- Clamp Body / Twin Design with different diameters **LBU**
- \* STAUFF Group **1**
- \* Exact outside diameters Ø D1 / Ø D2 (mm) **03.2/03.2**
- \* Material code (see below) **PP**

**Standard Materials**

**Polypropylene**  
 Colour: Black  
 Material code: **PP**

**Polyamide**  
 Colour: Yellow  
 Material code: **PA**

See pages 154 / 155 for material properties and technical information.

Alternative materials are available upon request. Please contact STAUFF for further information.

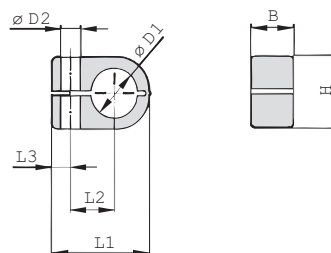
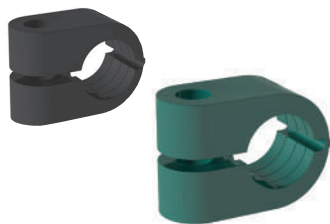
**Applications**

- Pneumatics, Instrumentation and Automotive Technology, Machine Tool Industry, Lubrication, Mechanical Engineering

Additional outside diameters and combinations of different outside diameters (Clamp Body, Type LBU) are available upon request. Please contact STAUFF for further information.



## Clamp Body - Single Design Type LN



### Ordering Codes

#### Clamp Body

**\*LN-\*1\*06-\*PP**

- \* Light Series: Clamp Body / Single Design **LN**
- \* STAUFF Group **1**
- \* Exact outside diameter Ø D1 (mm) **06**
- \* Material code (see below) **PP**

### Standard Materials



#### Polypropylene

Colour: Green  
Material code: **PP**



#### Polyamide

Colour: Black  
Material code: **PA**

See pages 154 / 155 for material properties and technical information.

Alternative materials are available upon request.  
Please contact STAUFF for further information.

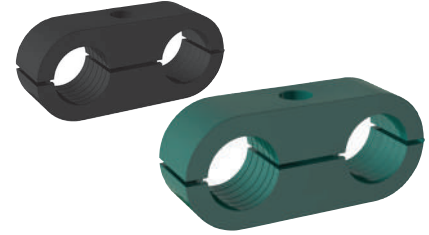
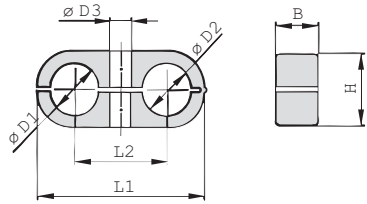
### Applications

- Pneumatics, Instrumentation and Automotive Technology,  
Machine Tool Industry, Lubrication, Mechanical Engineering

Group	Outside Diameter Pipe / Tube / Hose Ø D1		Nominal Bore Pipe (in)	Ordering Codes (1 Clamp Body) (* = Material)	Dimensions (mm/in)					
	(mm)	(in)			L1	L2	L3	B	H	Ø D2
1	6			LN-106-*	22	9	7	14,5	13,5	6,8
	6,4	1/4		LN-106.4-*	.87	.35	.28	.57	.53	.27
	8			LN-108-*						
2	8			LN-208-*						
	9,5	3/8		LN-209.5-*	27	11	7	14,5	18,5	6,8
	10		1/8	LN-210-*	1.06	.43	.28	.57	.59	.27
	12			LN-212-*						
	12,7	1/2		LN-212.7-*						
3	10		1/8	LN-310-*						
	12			LN-312-*						
	12,7	1/2		LN-312.7-*						
	13,5		1/4	LN-313.5-*	33	15	7	14,5	23,5	6,8
	14			LN-314-*	1.30	.59	.28	.57	.93	.27
	15			LN-315-*						
	16	5/8		LN-316-*						
4	14			LN-414-*						
	15			LN-415-*						
	16	5/8		LN-416-*						
	17,2		3/8	LN-417.2-*	40	19	7	14,5	30,5	6,8
	18			LN-418-*	1.57	.75	.28	.57	1.20	.27
	19	3/4		LN-419-*						
	20			LN-420-*						
	21,3		1/2	LN-421.3-*						
22			LN-422-*							

Additional outside diameters are available upon request. Please contact STAUFF for further information.



**Clamp Body - Twin Design  
Type LNGF / LNUF**


Group STAUFF	Outside Diameters Pipe / Tube / Hose Ø D1 / Ø D2		Nominal Bore Pipe (in)	Ordering Codes (1 Clamp Body) (** = Material)	Dimensions (mm/in)				
	(mm)	(in)			L1	L2	B	H	Ø D3
1	6			LNGF-106/06-**	32	18	14,5	13,5	6,8
	6,4	1/4		LNGF-106.4/06.4-**	1.26	.70	.57	.53	.27
	8			LNGF-108/08-**					
2	8			LNGF-208/08-**					
	9,5	3/8		LNGF-209.5/09.5-**					
	10		1/8	LNGF-210/10-**	41	22	14,5	18,5	6,8
	12			LNGF-212/12-**	1.61	.86	.57	.73	.27
	12,7	1/2		LNGF-212.7/12.7-**					
3	10		1/8	LNGF-310/10-**					
	12			LNGF-312/12-**					
	12,7	1/2		LNGF-312.7/12.7-**					
	13,5		1/4	LNGF-313.5/13.5-**	54	30	14,5	23,5	6,8
	14			LNGF-314/14-**	2.13	1.18	.57	.93	.27
	15			LNGF-315/15-**					
4	16	5/8		LNGF-316/16-**					
	14			LNGF-414/14-**					
	15			LNGF-415/15-**					
	16	5/8		LNGF-416/16-**					
	17,2		3/8	LNGF-417.2/17.2-**	70	38	14,5	30,5	6,8
	18			LNGF-418/18-**	2.76	1.50	.57	1.20	.27
	19	3/4		LNGF-419/19-**					
	20			LNGF-420/20-**					
21,3		1/2	LNGF-421.3/21.3-**						
22			LNGF-422/22-**						

**Ordering Codes**
**Clamp Body \*LNGF-\*1\*06/06-\*PP**

- \* Light Series: Clamp Body / Twin Design with identical diameters **LNGF**
- Clamp Body / Twin Design with different diameters **LNUF**
- \* STAUFF Group **1**
- \* Exact outside diameters Ø D1 / Ø D2 (mm) **06/06**
- \* Material code (see below) **PP**

**Standard Materials**
**Polypropylene**  
 Colour: Green  
 Material code: **PP**
**Polyamide**  
 Colour: Black  
 Material code: **PA**

See pages 154 / 155 for material properties and technical information. Alternative materials are available upon request. Please contact STAUFF for further information.

**Applications**

- Pneumatics, Instrumentation and Automotive Technology, Machine Tool Industry, Lubrication, Mechanical Engineering

Additional outside diameters and combinations of different outside diameters (Clamp Body, type LNUF) are available upon request. Please contact STAUFF for further information.

**Cover Plate  
Type DPL**


Group STAUFF	Dimensions (mm/in)			Ordering Codes (Standard Options)
	L4	B2	Ø D4	
1	29,5	15,5	6,8	DPL-1-W3
	1.16	.61	.27	
2	40	15,5	6,8	DPL-2-W3
	1.57	.61	.27	
3	51	16	6,8	DPL-3-W3
	2.01	.63	.27	
4	63,5	16	6,8	DPL-4-W3
	2.50	.63	.27	

**Ordering Codes**
**Cover Plate \*DPL-\*1-\*W3**

- \* Cover Plate for Clamp Body / Twin Design **DPL**
- \* STAUFF Group **1**
- \* Material code Carbon Steel, zinc/nickel-plated **W3**

Alternative materials and surface finishings are available upon request. Contact STAUFF for further information. Please note: The maximum tightening torque for bolts is 2,5 N·m (1.85 ft·lb).









**Saddle / Piggyback Clamp**

ZR-518

122

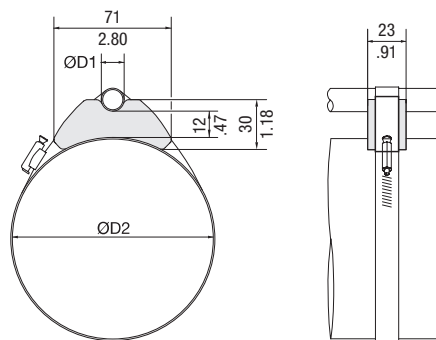


**Custom-Designed Saddle / Piggyback Clamps**

122



Saddle / Piggyback Clamps  
Type ZR



Order Code

Saddle Clamp

ZR-518-SA73-BK

Standard Material



Thermoplastic Elastomer (73 Shore-A)  
Colour: Black

See pages 154 / 155 for properties and technical information.

Min/Max Outside Diameters *				Tightening Strap Dimensions (Not Included in Scope of Delivery)			
Pipe / Tube Ø D1		Ø D2		Length		Width	
(mm)	(in)	(mm)	(in)	(mm)	(in)	(mm)	(in)
10 ... 22	.39 ... .87	50 ... 70	1.96 ... 2.76	196 ... 254	7.71 ... 10.00	13	.51
		60 ... 80	2.36 ... 3.15	225 ... 284	8.86 ... 11.18		
		70 ... 90	2.76 ... 3.54	254 ... 314	10.00 ... 12.36		
		80 ... 105	3.15 ... 4.13	284 ... 359	11.18 ... 14.13		
		90 ... 120	3.54 ... 4.72	314 ... 404	12.36 ... 15.90		
		105 ... 140	4.13 ... 5.51	359 ... 464	14.13 ... 18.27		
		125 ... 160	4.92 ... 6.30	419 ... 525	16.50 ... 20.66		
		145 ... 180	5.71 ... 7.09	479 ... 586	18.86 ... 23.07		
165 ... 200	6.50 ... 7.87	540 ... 647	21.26 ... 25.47				

\* Ø D1 depending on Ø D2!

J

Saddle / Piggyback Clamps

Type ZR saddle clamps from STAUFF allow direct fixing and safe guiding of pipes, tubes and hoses on hydraulic cylinders and other round or oval structures, without causing damage to their strength or integrity as with screw-fixing or welding and without preparation or reworking of the surface coating. The simple system also allows a pipe, tube or hose with a small outer diameter to be installed on top of a significantly larger one.

The position can be adjusted at any time thanks to free axial and radial positioning of the clamps on the structure. This also makes the system suitable for retrofitting.

The standard version ZR-518 made of thermoplastic elastomer material covers diameters in a range from 50 to 200 mm / 1.96 to 7.87 in for the cylinder and from 10 to 22 mm / .39 to .87 inch for the attached tube or hose. The diameters to be covered are used to calculate the overall length of the required tightening straps or the dimensions of the steel strap or worm drive hose clamp, e.g. according to DIN 3017.

STAUFF meets deviating requirements with numerous other variants which were implemented in the past and can be manufactured again at any time.

If required, customised clamps can be developed for specific requirements or manufactured based on drawings and models provided.

Please contact STAUFF for further information.



Dimensional drawings: All dimensions in mm (in).





## LubeTeam Hydraulic S.r.l.

*Administration and Headquarter:*

Via Tufara Scautieri, 6

83018 - San Martino Valle Caudina (AV)

*Office and Warehouse:*

S.S. 7 Appia, Km. 237,00

82011 - Airola BN

ITALY

Tel. +39 0823 950 994

Fax +39 0823 412 546

[www.lubeteam.it](http://www.lubeteam.it) [info@lubeteam.it](mailto:info@lubeteam.it)

Italian VAT / C.F. e P.IVA: 01251720627

Follow us



This document is the property of LubeTeam Hydraulic S.r.l. All data reported here are for the exclusive use of the Receiver. Reproduction is not authorized without writing permission, in all or in part of the content of this document, in accordance to Law 633 art. 171, dated April 22, 1941.

Il presente documento è di proprietà della LubeTeam Hydraulic S.r.l. I dati riportati sono per esclusivo del destinatario. La riproduzione, di tutto o in parte, non è autorizzata senza permesso scritto secondo l'art. 171 della L. 633 del 22 Aprile 1941.