



STAUFF

Collari di fissaggio

Collari in metallo



 HYDRAULIC
COMPONENTS
& FLUID CONTAMINATION
CONTROL



All trademarks belong to their respective owners; third party trademarks, product names, trade names, corporate names and company names mentioned may be trademarks of their respective owners or registered trademarks of other companies and are used for instructional purposes and for the benefit of the owner, without any end of Copyright infringement in force.

Tutti i marchi riportati appartengono ai legittimi proprietari; marchi di terzi, nomi di prodotti, nomi commerciali, nomi corporativi e società citati possono essere di proprietà dei rispettivi titolari o registrati da altre società e sono stati utilizzati a puro scopo esplicativo e a beneficio del possessore, senza alcun fine di violazione dei diritti di Copyright vigenti.





**Metal Pipe Clamp with Tension Clearance
Two-Bolt Design**
DIN 3567-A

136



**Metal Pipe Clamp with Tension Clearance
Three-Bolt Design (Extended to One Side)**
DIN 3567-B

137



**Heavy Saddle with Tension Clearance
Single-Bolt Design**
DIN 1592

138



**Heavy Saddle with Tension Clearance
Two-Bolt Design**
DIN 1593

139



**Light Saddle with Tension Clearance
Single-Bolt Design**
DIN 1596

140



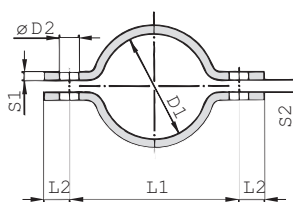
**Light Saddle with Tension Clearance
Two-Bolt Design**
DIN 1597

141

L



Metal Pipe Clamp with Tension Clearance (DIN 3567-A) Two-Bolt Design



Ordering Codes

Metal Pipe Clamp *DIN3567-A*-20*W1

One metal pipe clamp is consisting of two clamp halves.
Hexagon head bolts and nuts are not included.

- * Metal Pipe Clamp to DIN 3567, type A **DIN3567-A**
- * STAUFF Group (Ø D1) **-20**
- * Material code Carbon Steel, uncoated **W1**
- Carbon Steel, hot-dip galvanised **W40**
- Stainless Steel V4A **W5**
- 1.4401 / 1.4571 (AISI 316 / 316 Ti)

Clamp Assembly *DIN3567-A*-20*W1*COMPL

One clamp assembly is consisting of two clamp halves,
two hexagon head bolts and two hexagon head nuts.

- * Metal Pipe Clamp to DIN 3567, type A **DIN3567-A**
- * STAUFF Group (Ø D1) **-20**
- * Material code Carbon Steel, uncoated **W1**
- Carbon Steel, hot-dip galvanised **W40**
- Stainless Steel V4A **W5**
- 1.4401 / 1.4571 (AISI 316 / 316 Ti)

* Clamp assembly with bolts and nuts **COMPL**

Please note: All items are supplied non-assembled.

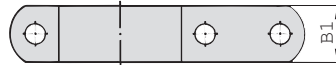
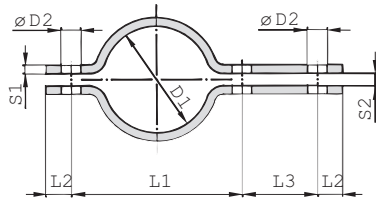
Applications

- Installation of pipes, tubes and other construction elements on beams, profiles and consoles

STAUFF Group	Nominal Size	Dimensions (mm/in)							Accessories	
		Pipe (in)	L1	L2	S1	S2	D2	B1	Hexagon Head Bolts (Hexagon Head Nuts)	
Ø D1	(mm)									
20	15		57	15	5	7	11.5	30	M10 x 30 (M10) 3/8-16 UNC x 1-1/4 (3/8-16 UNC)	
22			2.24	.59	.20	.28	.45	1.18		
25	20		59	15	5	7	11.5	30		
			2.32	.59	.20	.28	.45	1.18		
27	3/4		62	15	5	7	11.5	30		
			2.44	.59	.20	.28	.45	1.18		
30	25	1		66	15	5	7	11.5		30
				2.60	.59	.20	.28	.45		1.18
34	32	1-1/4		68	15	5	7	11.5		30
				2.68	.59	.20	.28	.45		1.18
38	40	1-1/2		72	15	5	7	11.5		30
				2.83	.59	.20	.28	.45		1.18
43	50	2		76	15	5	7	11.5	30	
				2.99	.59	.20	.28	.45	1.18	
45	65	2-1/2		82	15	5	7	11.5	30	
				3.23	.59	.20	.28	.45	1.18	
49	80	3		84	15	5	7	11.5	30	
				3.31	.59	.20	.28	.45	1.18	
57	100	4		88	15	5	7	11.5	30	
				3.46	.59	.20	.28	.45	1.18	
61	125			104	18	6	9	14	40	
				4.09	.71	.24	.35	.55	1.57	
77	150			108	18	6	9	14	40	
				4.25	.71	.24	.35	.55	1.57	
89	175			122	18	6	9	14	40	
				4.80	.71	.24	.35	.55	1.57	
108	200			136	18	6	9	14	40	
				5.35	.71	.24	.35	.55	1.57	
115	250			172	24	8	11	18	50	
				6.77	.94	.31	.43	.71	1.97	
133	300			178	24	8	11	18	50	
				7.01	.94	.31	.43	.71	1.97	
140	350			196	24	8	11	18	50	
				7.72	.94	.31	.43	.71	1.97	
159	400			204	24	8	11	18	50	
				8.03	.94	.31	.43	.71	1.97	
169	450			222	24	8	11	18	50	
				8.74	.94	.31	.43	.71	1.97	
194	500			232	24	8	11	18	50	
				9.13	.94	.31	.43	.71	1.97	
216	550			258	24	8	11	18	50	
				10.16	.94	.31	.43	.71	1.97	
267	600			280	24	8	11	18	50	
				11.02	.94	.31	.43	.71	1.97	
273	650			284	24	8	11	18	50	
				11.18	.94	.31	.43	.71	1.97	
318	700			342	30	8	14	23	60	
				13.46	1.18	.31	.55	.91	2.36	
324	750			348	30	8	14	23	60	
				13.70	1.18	.31	.55	.91	2.36	
368	800			392	30	8	14	23	60	
				15.43	1.18	.31	.55	.91	2.36	
407	850			398	30	8	14	23	60	
				15.67	1.18	.31	.55	.91	2.36	
419	900			444	30	8	14	23	60	
				17.48	1.18	.31	.55	.91	2.36	
521	950			498	36	10	18	27	70	
				19.61	1.42	.39	.71	1.06	2.76	
				510	36	10	18	27	70	
				10.08	1.42	.39	.71	1.06	2.76	
				614	36	10	18	27	70	
				24.17	1.42	.39	.71	1.06	2.76	

Alternative materials and surface finishings are available upon request. Contact STAUFF for further information.



Metal Pipe Clamp with Tension Clearance (DIN 3567-B)
 Three-Bolt Design (Extended to One Side)


STAUFF Group	Nominal Size		Dimensions (mm/m)							Accessories			
	Ø D1	Pipe (in)	L1	L2	L3	S1	S2	D2	B1	Hexagon Head Bolts (Hexagon Head Nuts)			
20	15		57	15	46	5	7	11.5	30	M10 x 30 (M10)	3/8-16 UNC x 1-1/4 (3/8-16 UNC)		
22			2.24	.59	1.81	.20	.28	.45	1.18				
25	20	3/4	59	15	46	5	7	11.5	30				
			2.32	.59	1.81	.20	.28	.45	1.18				
27	20	3/4	62	15	46	5	7	11.5	30				
			2.44	.59	1.81	.20	.28	.45	1.18				
30	25	1	66	15	46	5	7	11.5	30				
			2.60	.59	1.81	.20	.28	.45	1.18				
34	25	1	68	15	46	5	7	11.5	30				
			2.68	.59	1.81	.20	.28	.45	1.18				
38	32	1-1/4	72	15	46	5	7	11.5	30				
			2.83	.59	1.81	.20	.28	.45	1.18				
43	32	1-1/4	76	15	46	5	7	11.5	30				
			2.99	.59	1.81	.20	.28	.45	1.18				
45	40	1-1/2	82	15	46	5	7	11.5	30				
			3.23	.59	1.81	.20	.28	.45	1.18				
49	40	1-1/2	84	15	46	5	7	11.5	30				
			3.31	.59	1.81	.20	.28	.45	1.18				
57	50	2	88	15	46	5	7	11.5	30				
			3.46	.59	1.81	.20	.28	.45	1.18				
61	50	2	104	18	54	6	9	14	40	M12 x 35 (M12)	7/16-14 UNC x 1-3/8 (7/16-14 UNC)		
			4.09	.71	2.13	.24	.35	.55	1.57				
77	65	2-1/2	108	18	54	6	9	14	40				
			4.25	.71	2.13	.24	.35	.55	1.57				
89	80	3	122	18	54	6	9	14	40				
			4.80	.71	2.13	.24	.35	.55	1.57				
108	100	4	136	18	54	6	9	14	40				
			5.35	.71	2.13	.24	.35	.55	1.57				
115	100	4	172	24	70	8	11	18	50	M16 x 45 (M16)	5/8-11 UNC x 1-3/4 (5/8-11 UNC)		
			6.77	.94	2.76	.31	.43	.71	1.97				
133	125		178	24	70	8	11	18	50				
			7.01	.94	2.76	.31	.43	.71	1.97				
140	125		196	24	70	8	11	18	50				
			7.72	.94	2.76	.31	.43	.71	1.97				
159	150		204	24	70	8	11	18	50				
			8.03	.94	2.76	.31	.43	.71	1.97				
169	150		222	24	70	8	11	18	50				
			8.74	.94	2.76	.31	.43	.71	1.97				
194	175		232	24	70	8	11	18	50				
			9.13	.94	2.76	.31	.43	.71	1.97				
216	200		258	24	70	8	11	18	50				
			10.16	.94	2.76	.31	.43	.71	1.97				
220	200		280	24	70	8	11	18	50				
			11.02	.94	2.76	.31	.43	.71	1.97				
267	250		284	24	70	8	11	18	50				
			11.18	.94	2.76	.31	.43	.71	1.97				
273	250		342	30	86	8	14	23	60	M20 x 50 (M20)	3/4-10 UNC x 2 (3/4-10 UNC)		
			13.46	1.18	3.39	.31	.55	.91	2.36				
318	300		348	30	86	8	14	23	60				
			13.70	1.18	3.39	.31	.55	.91	2.36				
324	300		392	30	86	8	14	23	60				
			15.43	1.18	3.39	.31	.55	.91	2.36				
368	350		398	30	86	8	14	23	60				
			15.67	1.18	3.39	.31	.55	.91	2.36				
407	400		444	30	86	8	14	23	60				
			17.48	1.18	3.39	.31	.55	.91	2.36				
419	400		498	36	104	10	18	27	70			M24 x 60 (M24)	7/8-9 UNC 2-3/8 (7/8-9 UNC)
			19.61	1.42	4.09	.39	.71	1.06	2.76				
521	500		510	36	104	10	18	27	70				
			10.08	1.42	4.09	.39	.71	1.06	2.76				
521	500		614	36	104	10	18	27	70				
			24.17	1.42	4.09	.39	.71	1.06	2.76				

Ordering Codes
Metal Pipe Clamp *DIN3567-B*-20*W1

One metal pipe clamp is consisting of two clamp halves. Hexagon head bolts and nuts are not included.

- * Metal Pipe Clamp to DIN 3567, type B **DIN3567-B**
- * STAUFF Group (Ø D1) **-20**
- * Material code Carbon Steel, uncoated **W1**
- Carbon Steel, hot-dip galvanised **W40**
- Stainless Steel V4A **W5**
1.4401 / 1.4571 (AISI 316 / 316 Ti)

Clamp Assembly *DIN3567-B*-20*W1*COMPL

One clamp assembly is consisting of two clamp halves, three hexagon head bolts and three hexagon head nuts.

- * Metal Pipe Clamp to DIN 3567, type B **DIN3567-B**
- * STAUFF Group (Ø D1) **-20**
- * Material code Carbon Steel, uncoated **W1**
- Carbon Steel, hot-dip galvanised **W40**
- Stainless Steel V4A **W5**
1.4401 / 1.4571 (AISI 316 / 316 Ti)
- * Clamp assembly with bolts and nuts **COMPL**

Please note: All items are supplied non-assembled.

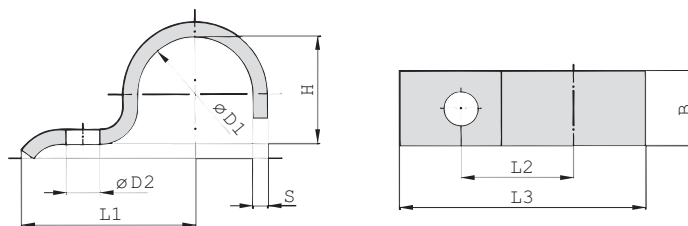
Applications

- Installation of pipes, tubes and other construction elements on beams, profiles and consoles

Alternative materials and surface finishings are available upon request. Contact STAUFF for further information.



Heavy Saddle with Tension Clearance (DIN 1592) Single-Bolt Design



Ordering Codes

Heavy Saddle

***DIN1592-*7-*W66**

* Heavy Saddle to DIN 1592	DIN1592
* STAUFF Group (Ø D1)	7
* Material code	
Carbon Steel, uncoated	W1
Carbon Steel, zinc-plated and thick-film passivated	W66
Stainless Steel V4A 1.4401 / 1.4571 (AISI 316 / 316 Ti)	W5

Applications

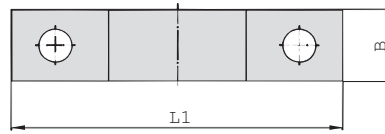
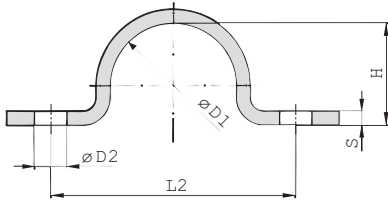
- Installation of pipes, tubes, poles and other round components directly on the substrate (floor, wall or ceiling)

STAUFF Group	Diameter Range		Dimensions (mm / in)						
	Ø D1 (mm)	(in)	L1	L2	L3	H	D2	B	S
7	5,5 ... 7	.2228	22	14	27,5	5	6,6	16	2
			.87	.55	1.08	.20	.26	.63	.08
9	7 ... 9	.2835	27	18	33,5	6	6,6	20	2
			1.06	.71	1.32	.24	.26	.79	.08
13	9,5 ... 13	.3951	40	25	49,5	9	11	25	3
			1.57	.98	1.95	.35	.43	.98	.12
15,5	13 ... 15,5	.5161	41	26	52	12	11	25	3
			1.61	1.02	2.05	.47	.43	.98	.12
19	15,5 ... 19	.6175	43	28	55,5	15	11	25	3
			1.69	1.10	2.19	.59	.43	.98	.12
23	20 ... 23	.7991	51	35	67	19	14	30	5
			2.01	1.38	2.64	.75	.55	1.18	.20
26	23 ... 26	.91 ... 1.02	52	36	70	22	14	30	5
			2.05	1.42	2.76	.87	.55	1.18	.20
28,5	26 ... 28,5	1.02 ... 1.12	53	37	73	24	14	30	5
			2.09	1.46	2.87	.94	.55	1.18	.20
31	28,5 ... 31	1.12 ... 1.22	55	39	75,5	27	14	30	5
			2.17	1.54	2.97	1.06	.55	1.18	.20
36	33 ... 36	1.30 ... 1.42	57	41	81	32	14	40	5
			2.24	1.61	3.19	1.26	.55	1.57	.20
39	36 ... 39	1.42 ... 1.54	59	43	83,5	34	14	40	5
			2.32	1.69	3.29	1.34	.55	1.57	.20
43	39 ... 43	1.54 ... 1.69	68	48	94,5	38	18	40	5
			2.68	1.89	3.72	1.50	.71	1.57	.20
46	43 ... 46	1.69 ... 1.81	70	50	98	41	18	40	5
			2.76	1.97	3.86	1.61	.71	1.57	.20
49	46 ... 49	1.81 ... 1.93	73	53	105,5	44	18	40	8
			2.87	2.09	4.15	1.73	.71	1.57	.31
52 *	49 ... 52	1.93 ... 2.05	76	56	110	47	18	40	8
			2.99	2.20	4.33	1.85	.71	1.57	.31
58	53 ... 58	2.09 ... 2.28	78	58	115	52	18	40	8
			3.07	2.28	4.53	2.05	.71	1.57	.31
61	58 ... 61	2.28 ... 2.40	80	60	118,5	57	18	40	8
			3.15	2.36	4.67	2.24	.71	1.57	.31

* Similar to DIN 1592.

Alternative materials and surface finishings are available upon request. Contact STAUFF for further information.



**Heavy Saddle with Tension Clearance (DIN 1593)
Two-Bolt Design**


STAUFF Group	Diameter Range		Dimensions (mm/in)						
	Ø D1	(mm)	(in)	L1	L2	H	D2	B	S
7	5,5 ... 7	.2228	44	28	5	6,6	16	2	
			1.73	1.10	.20	.26	.63	.08	
9	7 ... 9	.2835	48	32	6	6,6	20	2	
			1.89	1.26	.24	.26	.79	.08	
13	9,5 ... 13	.3951	52	36	9	6,6	20	2	
			2.05	1.42	.35	.26	.79	.08	
15,5	13 ... 15,5	.5161	56	40	12	6,6	20	2	
			2.20	1.57	.47	.26	.79	.08	
19	15,5 ... 19	.6175	60	44	15	6,6	20	2	
			2.36	1.73	.59	.26	.79	.08	
23	20 ... 23	.7991	82	56	19	11	25	3	
			3.23	2.20	.75	.43	.98	.12	
26	23 ... 26	.91 ... 1.02	84	58	22	11	25	3	
			3.31	2.28	.87	.43	.98	.12	
28,5	26 ... 28,5	1.02 ... 1.12	90	64	24	11	25	3	
			3.54	2.52	.94	.43	.98	.12	
31	28,5 ... 31	1.12 ... 1.22	90	64	27	11	25	3	
			3.54	2.52	1.06	.43	.98	.12	
36	33 ... 36	1.30 ... 1.42	106	80	32	11	30	5	
			4.17	3.15	1.26	.43	1.18	.20	
39	36 ... 39	1.42 ... 1.54	110	84	34	11	30	5	
			4.33	3.31	1.34	.43	1.18	.20	
43	39 ... 43	1.54 ... 1.69	120	88	38	14	30	5	
			4.72	3.46	1.50	.55	1.18	.20	
46	43 ... 46	1.69 ... 1.81	122	90	41	14	30	5	
			4.80	3.54	1.61	.55	1.18	.20	
49	46 ... 49	1.81 ... 1.93	122	90	44	14	30	5	
			4.80	3.54	1.73	.55	1.18	.20	
58	53 ... 58	2.09 ... 2.28	142	110	52	14	40	5	
			5.59	4.33	2.05	.55	1.57	.20	
61	58 ... 61	2.28 ... 2.40	142	110	57	14	40	5	
			5.59	4.33	2.24	.55	1.57	.20	
71	67 ... 71	2.64 ... 2.80	152	120	66	14	40	5	
			5.98	4.72	2.60	.55	1.57	.20	
77	73 ... 77	2.87 ... 3.03	176	136	72	18	40	5	
			6.93	5.35	2.83	.71	1.57	.20	
81	77 ... 81	3.03 ... 3.19	184	144	76	18	40	5	
			7.24	5.67	2.99	.71	1.57	.20	
91	88 ... 91	3.39 ... 3.58	198	158	85	18	40	8	
			7.80	6.22	3.35	.71	1.57	.31	
103	99 ... 103	3.90 ... 4.06	214	174	98	18	40	8	
			8.43	6.85	3.86	.71	1.57	.31	
109	105 ... 109	4.13 ... 4.29	220	180	104	18	40	8	
			8.66	7.09	4.09	.71	1.57	.31	
115	110 ... 115	4.33 ... 4.53	226	186	109	18	40	8	
			8.90	7.32	4.29	.71	1.57	.31	

Ordering Codes
Heavy Saddle
***DIN1593-7-*W66**

* Heavy Saddle to DIN 1593

DIN1593

* STAUFF Group (Ø D1)

7

* Material code Carbon Steel, uncoated

W1

 Carbon Steel, zinc-plated
and thick-film passivated

W66

Stainless Steel V4A

1.4401 / 1.4571 (AISI 316 / 316 Ti)

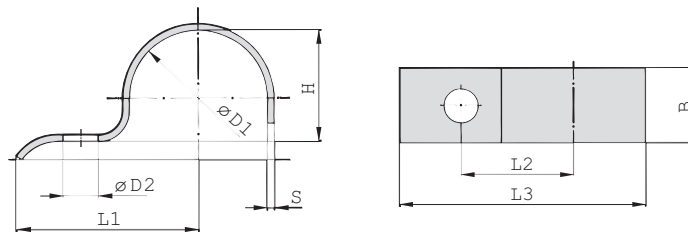
W5
Applications

- Installation of pipes, tubes, poles and other round components directly on the substrate (floor, wall or ceiling)

Alternative materials and surface finishings are available upon request. Contact STAUFF for further information.



Light Saddle with Tension Clearance (DIN 1596) Single-Bolt Design



Ordering Codes

Light Saddle

***DIN1596-*7-*W66**

* Light Saddle to DIN 1596

DIN1596

* STAUFF Group (Ø D1)

7

* Material code
Carbon Steel, uncoated
Carbon Steel, zinc-plated
and thick-film passivated

W1

W66

Stainless Steel V4A
1.4401 / 1.4571 (AISI 316 / 316 Ti)

W5

Applications

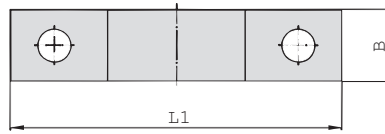
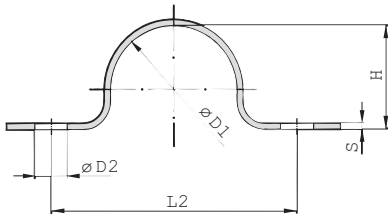
- Installation of pipes, tubes, poles and other round components directly on the substrate (floor, wall or ceiling)

STAUFF Group	Diameter Range		Dimensions (mm/in)						
	Ø D1 (mm)	(in)	L1	L2	L3	H	D2	B	S
7	5,5 ... 7	.2228	26	14	31,5	5	6,6	16	2
			1.02	.55	1.24	.20	.26	.63	.08
9	7 ... 9	.2835	28	16	34,5	6	6,6	16	2
			1.10	.63	1.36	.24	.26	.63	.08
13	9,5 ... 13	.3951	30	18	38,5	9	6,6	20	2
			1.18	.71	1.52	.35	.26	.79	.08
15,5	13 ... 15,5	.5161	32	20	41,75	12	6,6	20	2
			1.26	.79	1.64	.47	.26	.79	.08
19	15,5 ... 19	.6175	34	22	45,5	15	6,6	20	2
			1.34	.87	1.79	.59	.26	.79	.08
23	20 ... 23	.7991	43	28	57,5	19	9	25	3
			1.69	1.10	2.26	.75	.35	.98	.12
26	23 ... 26	.91 ... 1.02	44	29	60	22	9	25	3
			1.73	1.14	2.36	.87	.35	.98	.12
28,5	26 ... 28,5	1.02 ... 1.12	47	32	64,25	24	9	25	3
			1.85	1.26	2.53	.94	.35	.98	.12
31	28,5 ... 31	1.12 ... 1.22	47	32	65,5	27	9	25	3
			1.85	1.26	2.58	1.06	.35	.98	.12
33 *	31 ... 33	1.22 ... 1.30	56	36	75,5	29	9	25	3
			2.20	1.42	2.97	1.14	.35	.98	.12
36	33 ... 36	1.30 ... 1.42	57	40	78	32	11	30	3
			2.24	1.57	3.07	1.26	.43	1.18	.12
39	36 ... 39	1.42 ... 1.54	59	42	81,5	34	11	30	3
			2.32	1.65	3.21	1.34	.43	1.18	.12
43	39 ... 43	1.54 ... 1.69	61	44	85,5	38	11	30	3
			2.40	1.73	3.37	1.50	.43	1.18	.12
46	43 ... 46	1.69 ... 1.81	62	45	88	41	11	30	3
			2.44	1.77	3.46	1.61	.43	1.18	.12
49	46 ... 49	1.81 ... 1.93	67	48	95,5	44	14	40	4
			2.64	1.89	3.76	1.73	.55	1.57	.16
52 *	49 ... 52	1.93 ... 2.05	72	53	102	47	14	40	4
			2.83	2.09	4.02	1.85	.55	1.57	.16
58	53 ... 58	2.09 ... 2.28	76	55	107	52	14	40	4
			2.99	2.17	4.21	2.05	.55	1.57	.16
61	58 ... 61	2.28 ... 2.40	77	58	111,5	56	14	40	4
			3.03	2.28	4.39	2.20	.55	1.57	.16

* Similar to DIN 1596.

Alternative materials and surface finishings are available upon request. Contact STAUFF for further information.



Light Saddle with Tension Clearance (DIN 1597)
Two-Bolt Design


STAUFF Group	Diameter Range		Dimensions (mm/in)					
	Ø D1	(mm)	(in)	L1	L2	H	D2	B
7	5,5 ... 7	.2228	44	28	5	5,5	16	1,5
			1.73	1.10	.20	.22	.63	.06
9	7 ... 9	.2835	48	32	6	5,5	16	1,5
			1.89	1.26	.24	.22	.63	.06
13	9,5 ... 13	.3951	52	36	9	5,5	16	1,5
			2.05	1.42	.35	.22	.63	.06
15,5	13 ... 15,5	.5161	56	40	12	5,5	16	1,5
			2.20	1.57	.47	.22	.63	.06
19	15,5 ... 19	.6175	60	44	15	5,5	16	1,5
			2.36	1.73	.59	.22	.63	.06
23	20 ... 23	.7991	76	56	19	6,6	20	2
			2.99	2.20	.75	.26	.79	.08
26	23 ... 26	.91 ... 1.02	78	58	22	6,6	20	2
			3.07	2.28	.87	.26	.79	.08
28,5	26 ... 28,5	1.02 ... 1.12	84	64	24	6,6	20	2
			3.31	2.52	.94	.26	.79	.08
31	28,5 ... 31	1.12 ... 1.22	84	64	27	6,6	20	2
			3.31	2.52	1.06	.26	.79	.08
33 *	31 ... 33	1.22 ... 1.30	92	72	29	6,6	20	2
			3.62	2.83	1.14	.26	.79	.08
36	33 ... 36	1.30 ... 1.42	104	80	32	9	25	3
			4.09	3.15	1.26	.35	.98	.12
39	36 ... 39	1.42 ... 1.54	108	84	34	9	25	3
			4.25	3.31	1.34	.35	.98	.12
43	39 ... 43	1.54 ... 1.69	112	88	38	9	25	3
			4.41	3.46	1.50	.35	.98	.12
46	43 ... 46	1.69 ... 1.81	114	90	41	9	25	3
			4.49	3.54	1.61	.35	.98	.12
49	46 ... 49	1.81 ... 1.93	118	90	44	11	30	3
			4.65	3.54	1.73	.43	1.18	.12
52 *	49 ... 52	1.93 ... 2.05	134	106	47	11	30	3
			5.28	4.17	1.85	.43	1.18	.12
58	53 ... 58	2.09 ... 2.28	138	110	52	11	30	3
			5.43	4.33	2.05	.43	1.18	.12
61	58 ... 61	2.28 ... 2.40	138	110	56	11	30	3
			5.43	4.33	2.20	.43	1.18	.12

Ordering Codes
Light Saddle
***DIN1597-7-*W66**

* Light Saddle to DIN 1597	DIN 1597
* STAUFF Group (Ø D1)	7
* Material code	Carbon Steel, uncoated W1
	Carbon Steel, zinc-plated and thick-film passivated W66
	Stainless Steel V4A W5
	1.4401 / 1.4571 (AISI 316 / 316 Ti)

Applications

- Installation of pipes, tubes, poles and other round components directly on the substrate (floor, wall or ceiling)

* Similar to DIN 1597.

Alternative materials and surface finishings are available upon request. Contact STAUFF for further information.



LubeTeam Hydraulic S.r.l.

Administration and Headquarter:

Via Tufara Scautieri, 6

83018 - San Martino Valle Caudina (AV)

Office and Warehouse:

S.S. 7 Appia, Km. 237,00

82011 - Airola BN

ITALY

Tel. +39 0823 950 994

Fax +39 0823 412 546

www.lubeteam.it info@lubeteam.it

Italian VAT / C.F. e P.IVA: 01251720627

Follow us



This document is the property of LubeTeam Hydraulic S.r.l. All data reported here are for the exclusive use of the Receiver. Reproduction is not authorized without writing permission, in all or in part of the content of this document, in accordance to Law 633 art. 171, dated April 22, 1941.

Il presente documento è di proprietà della LubeTeam Hydraulic S.r.l. I dati riportati sono per esclusivo del destinatario. La riproduzione, di tutto o in parte, non è autorizzata senza permesso scritto secondo l'art. 171 della L. 633 del 22 Aprile 1941.