



OLEOTECNICA

Flange

Flange a saldare di tasca

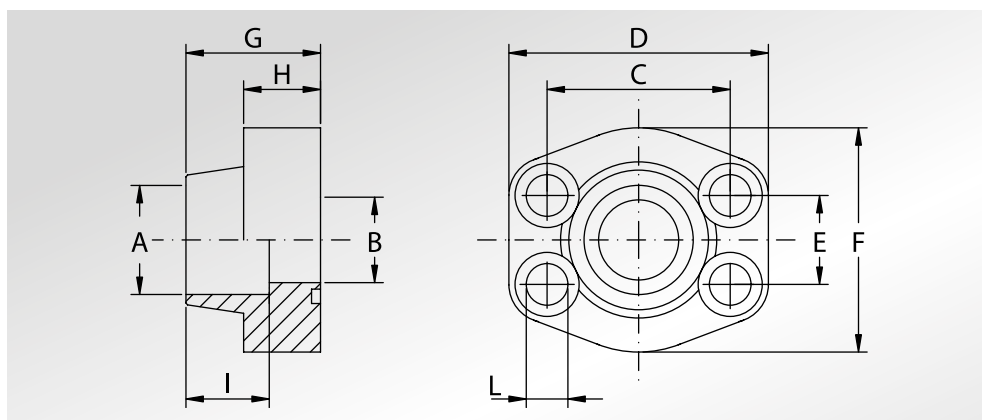


 HYDRAULIC
COMPONENTS
& FLUID CONTAMINATION
CONTROL



All trademarks belong to their respective owners; third party trademarks, product names, trade names, corporate names and company names mentioned may be trademarks of their respective owners or registered trademarks of other companies and are used for instructional purposes and for the benefit of the owner, without any end of Copyright infringement in force.

Tutti i marchi riportati appartengono ai legittimi proprietari; marchi di terzi, nomi di prodotti, nomi commerciali, nomi corporativi e società citati possono essere di proprietà dei rispettivi titolari o registrati da altre società e sono stati utilizzati a puro scopo esplicativo e a beneficio del possessore, senza alcun fine di violazione dei diritti di Copyright vigenti.



Pressione max di esercizio raccomandata Kg/cm ²	Grandezza	Tipo	Dimensioni										Viti		Or tipo	Peso Kg
Maximum recommended working pressure Kg/cm ²	Size	Type	Dimensions										Screws		Or type	Weight Kg
			A	B	C	D	E	F	G	H	I	L	Metric	Unc		

SERIE 3000

345	1/2"	AFS080S	21,6	13	38,10	57	17,48	46	36	16	19	9	M8x30	5/16"x1"1/4	4075	0,25
345	1/2"	AFS080S038	17,5	13	38,10	57	17,48	46	36	16	19	9	M8x30	5/16"x1"1/4	4075	0,27
345	3/4"	AFS100S	27,2	19	47,63	65	22,23	50	36	18	19	11	M10x35	3/8"x1"1/2	4100	0,37
345	1"	AFS102S	34,0	25	52,37	70	26,19	55	38	18	19	11	M10x35	3/8"x1"1/2	4131	0,45
276	1"1/4	AFS104S	42,8	32	58,72	79	30,18	68	41	21	22	11,5	M10x40	7/16"x1"3/4	4150	0,66
207	1"1/2	AFS106S	48,6	38	69,85	93	35,71	78	45	25	24	13,5	M12x45	1/2"x1"3/4	4187	1,03
207	2"	AFS108S	61,0	51	77,77	102	42,88	90	45	25	26	13,5	M12x45	1/2"x1"3/4	4225	1,17
172	2"1/2	AFS110S	76,6	63	88,90	114	50,80	105	50	25	30	13,5	M12x45	1/2"x1"3/4	4275	1,53
138	3"	AFS112S	90,5	73	106,38	134	61,93	124	50	27	34	17,5	M16x50	5/8"x2"	4337	2,09
34	3"1/2	AFS114S	103,0	89	120,65	152	69,85	136	48	27	34	17,5	M16x50	5/8"x2"	4387	2,35
34	4"	AFS116S	115,5	99	130,18	162	77,77	146	48	27	34	17,5	M16x50	5/8"x2"	4437	2,70
34	5"	AFS118S	142,0	120	152,40	184	92,08	180	50	28	28	17,5	M16x55	5/8"x2"1/4	4537	5,80

SERIE 6000

414	1/2"	AFS401S012	21,6	13	40,49	57	18,24	46	36	16	19	9	M8x30	5/16"x1"1/4	4075	0,25
414	1/2"	AFS401S038	17,5	13	40,49	57	18,24	46	36	16	19	9	M8x30	5/16"x1"1/4	4075	0,27
414	3/4"	AFS402S	27,2	19	50,80	71	23,80	55	35	21	22	11	M10x40	3/8"x1"1/2	4100	0,51
414	1"	AFS403S	34,0	25	57,15	81	27,76	65	42	25	22	13	M12x45	7/16"x1"3/4	4131	0,80
375	1"1/4	AFS404S	42,8	32	66,68	95	31,75	78	45	27	25	15	M14x45	-	4150	1,13
375	1"1/4	AFS404SL13	42,8	32	66,68	95	31,75	78	45	27	25	13,5	M12x45	1/2"x1"3/4	4150	1,13
320	1"1/2	AFS405S	48,6	38	79,38	112	36,50	94	50	30	28	17	M16x55	5/8"x2"1/4	4187	1,86
250	2"	AFS406S	61,0	51	96,82	134	44,45	114	65	37	24	21	M20x70	3/4"x2"3/4	4225	3,30
230	2"1/2	AFS507S *	76,6	63	123,80	180	58,70	152	80	48	30	26	M24x80	7/8"x3"1/4	4275	7,00
200	3"	AFS508S *	90,5	73	152,40	208	71,40	178	90	58	31	33	M30x100	1"1/8"x3"1/2	4337	11,2

La pressione di esercizio massima raccomandata si basa sulla flangia.

La massima pressione di lavoro del sistema è determinata dallo spessore e dal tipo di materiale del tubo utilizzato.

The maximum recommended working pressure is based on the flange.

The working pressure of the system is determined by the thickness and the steel quality of the pipe.

DESIGNAZIONE PER ORDINE DESIGNATION FOR ORDER	Materiale / Material	
	S355	AISI 316L
Solo flangia Only flange	AFS...S	AFX...S
Flangia completa di viti metriche, grower e o-ring Flange complete of metric screws, grower type washers and o-ring	AFS...SM	AFX...SM
Flangia completa di viti unc, grower e o-ring Flange complete of unc screws, grower type washers and o-ring	AFS...SU	AFX...SU

NOTE / NOTES

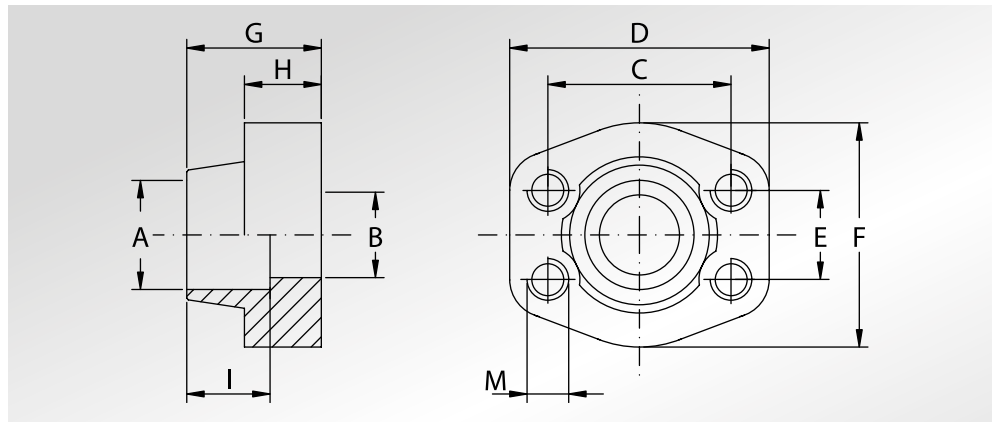
set viti unc disponibili solo in acciaio al carbonio
unc screws set available only in carbon steel

*set viti disponibili solo metriche in acciaio al carbonio
*screws set available only metric in carbon steel



CONTROFLANGE A SALDARE DI TASCA

WELD IN COUNTER-FLANGES



Pressione max di esercizio raccomandata kg/cm ²	Grandezza	Tipo	Dimensioni											Peso Kg		
Maximum recommended working pressure kg/cm ²	Size	Type	Dimensions											Weight Kg		
			A	B	C	D	E	F	G	H	I	M				
														Metric	Unc	
SERIE 3000																
345	1/2"	GFS080S	21,6	13	38,10	57	17,48	46	36	16	19	M8	5/16"	0,25		
345	1/2"	GFS080S038	17,5	13	38,10	57	17,48	46	36	16	19	M8	5/16"	0,28		
345	3/4"	GFS100S	27,2	19	47,63	65	22,23	50	36	18	19	M10	3/8"	0,39		
345	1"	GFS102S	34,0	25	52,37	70	26,19	55	38	18	19	M10	3/8"	0,46		
276	1"1/4	GFS104S	42,8	32	58,72	79	30,18	68	41	21	22	M10	7/16"	0,71		
207	1"1/2	GFS106S	48,6	38	69,85	93	35,71	78	45	25	24	M12	1/2"	1,11		
207	2"	GFS108S	61,0	51	77,77	102	42,88	90	45	25	26	M12	1/2"	1,19		
172	2"1/2	GFS110S	76,6	63	88,90	114	50,80	105	50	25	30	M12	1/2"	1,40		
138	3"	GFS112S	90,5	73	106,38	134	61,93	124	50	27	34	M16	5/8"	2,15		
34	3"1/2	GFS114S	103,0	89	120,65	152	69,85	136	48	27	34	M16	5/8"	2,40		
34	4"	GFS116S	115,5	99	130,18	162	77,77	146	48	27	34	M16	5/8"	2,85		
34	5"	GFS118S	142,0	120	152,40	184	92,08	180	50	28	28	M16	5/8"	5,80		
SERIE 6000																
414	1/2"	GFS401S012	21,6	13	40,49	57	18,24	46	36	16	19	M8	5/16"	0,26		
414	1/2"	GFS401S038	17,5	13	40,49	57	18,24	46	36	16	19	M8	5/16"	0,29		
414	3/4"	GFS402S	27,2	19	50,80	71	23,80	55	35	21	22	M10	3/8"	0,50		
414	1"	GFS403S	34,0	25	57,15	81	27,76	65	42	25	22	M12	7/16"	0,76		
375	1"1/4	GFS404S	42,8	32	66,68	95	31,75	78	45	27	25	M14	1/2"	1,20		
320	1"1/2	GFS405S	48,6	38	79,38	112	36,50	94	50	30	28	M16	5/8"	1,94		
250	2"	GFS406S	61,0	51	96,82	134	44,45	114	65	37	24	M20	3/4"	3,42		
230	2"1/2	GFS507S	76,6	63	123,80	180	58,70	152	80	48	30	M24	7/8"	7,25		
200	3"	GFS508S	90,5	73	152,40	208	71,40	178	90	58	30	M30	1"1/8	11,8		

La pressione di esercizio massima raccomandata si basa sulla flangia.
La massima pressione di lavoro del sistema è determinata dallo spessore e dal tipo di materiale del tubo utilizzato.

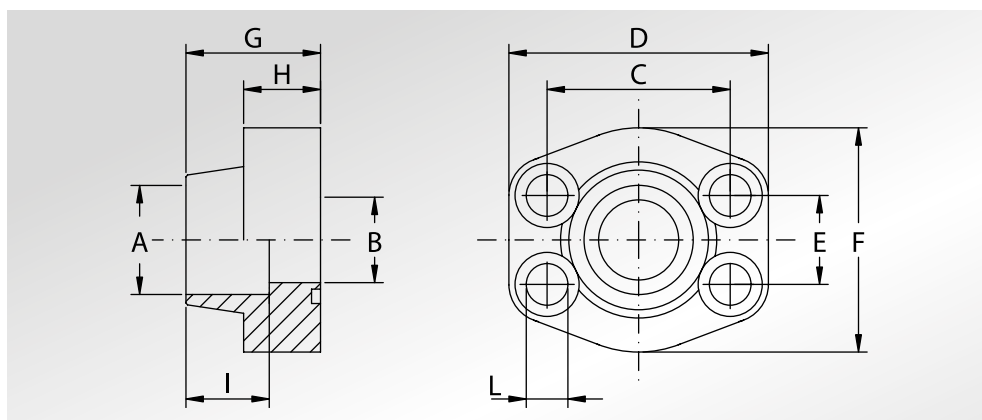
The maximum recommended working pressure is based on the flange.
The working pressure of the system is determined by the thickness and the steel quality of the pipe.

DESIGNAZIONE PER ORDINE DESIGNATION FOR ORDER	Materiale / Material	
	S355	AISI 316L
Controflangia con fori di fissaggio filettati metrici Counter-flange with metric threaded fixing holes	GFS...S	GFX...S
Controflangia con fori di fissaggio filettati unc Counter-flange with unc threaded fixing holes	GFS...SU	GFX...SU

**FLANGE
A SALDARE
DI TASCA
TUBO METRICO**



**METRIC PIPE
WELD IN
FLANGES**



Pressione max di esercizio raccomandata Kg/cm ²	Grandezza	Tipo	Dimensioni										Viti		Or tipo	Peso Kg
Maximum recommended working pressure Kg/cm ²	Size	Type	Dimensions										Screws		Or type	Weight Kg
			A	B	C	D	E	F	G	H	I	L	Metric	Unc		

SERIE 3000

345	1/2"	AFS080SA20	20,3	13	38,10	57	17,48	46	36	16	19	9	M8x30	5/16"x1"1/4	4075	0,25
345	3/4"	AFS100SA25	25,3	19	47,63	65	22,23	50	36	18	19	11	M10x35	3/8"x1"1/2	4100	0,39
345	1"	AFS102SA30	30,3	25	52,37	70	26,19	55	38	18	19	11	M10x35	3/8"x1"1/2	4131	0,46
276	1"1/4	AFS104SA38	38,3	32	58,72	79	30,18	68	41	21	22	11,5	M10x40	7/16"x1"3/4	4150	0,66
207	1"1/2	AFS106SA50	50,5	38	69,85	93	35,71	78	45	25	24	13,5	M12x45	1/2"x1"3/4	4187	1,05

SERIE 6000

414	1/2"	AFS401SA20	20,3	13	40,49	57	18,24	46	36	16	19	9	M8x30	5/16"x1"1/4	4075	0,25
414	3/4"	AFS402SA25	25,3	19	50,80	71	23,80	55	35	21	22	11	M10x40	3/8"x1"1/2	4100	0,50
414	1"	AFS403SA30	30,3	25	57,15	81	27,76	65	42	25	22	13	M12x45	7/16"x1"3/4	4131	0,76
276	1"1/4	AFS404SA38	38,3	32	66,68	95	31,75	78	45	27	25	15	M14x45	-	4150	1,20
276	1"1/4	AFS404SA38L13	38,3	32	66,68	95	31,75	78	45	27	25	13,5	M12x45	1/2"x1"3/4	4150	1,20
320	1"1/2	AFS405SA50	50,5	38	79,38	112	36,50	94	50	30	28	17	M16x55	5/8"x2"1/4	4187	1,90

La pressione di esercizio massima raccomandata si basa sulla flangia.

La massima pressione di lavoro del sistema è determinata dallo spessore e dal tipo di materiale del tubo utilizzato.

The maximum recommended working pressure is based on the flange.

The working pressure of the system is determined by the thickness and the steel quality of the pipe.

DESIGNAZIONE PER ORDINE DESIGNATION FOR ORDER	Materiale / Material	
	S355	AISI 316L
Solo flangia Only flange	AFS...SA	AFX...SA
Flangia completa di viti metriche, grower e o-ring Flange complete of metric screws, grower type washers and o-ring	AFS...SMA	AFX...SMA
Flangia completa di viti unc, grower e o-ring Flange complete of unc screws, grower type washers and o-ring	AFS...SUA	AFX...SUA

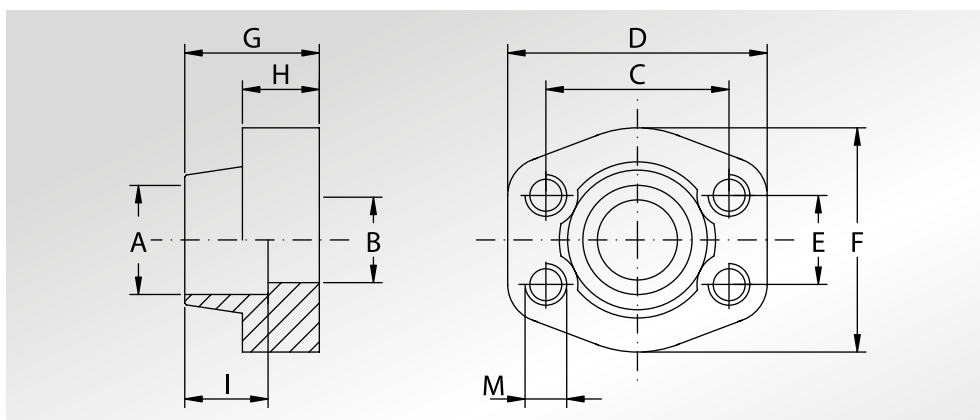
NOTE / NOTES

set viti unc disponibili solo in acciaio al carbonio
unc screws set available only in carbon steel



CONTROFLANGE A SALDARE DI TASCA TUBO METRICO

METRIC PIPE WELD IN COUNTER-FLANGES



Pressione max di esercizio raccomandata kg/cm ²	Grandezza	Tipo	Dimensioni										Peso Kg		
			Dimensions												
Maximum recommended working pressure kg/cm ²	Size	Type	A	B	C	D	E	F	G	H	I	Metric		Unc	Weight Kg
SERIE 3000															
345	1/2"	GFS080SA20	20,3	13	38,10	57	17,48	46	36	16	19	M8	5/16"	0,26	
345	3/4"	GFS100SA25	25,3	19	47,63	65	22,23	50	36	18	19	M10	3/8"	0,43	
345	1"	GFS102SA30	30,3	25	52,37	70	26,19	55	38	18	19	M10	3/8"	0,50	
276	1"1/4	GFS104SA38	38,3	32	58,72	79	30,18	68	41	21	22	M10	7/16"	0,71	
207	1"1/2	GFS106SA50	50,5	38	69,85	93	35,71	78	45	25	24	M12	1/2"	1,12	
SERIE 6000															
414	1/2"	GFS401SA20	20,3	13	40,49	57	18,24	46	36	16	19	M8	5/16"	0,26	
414	3/4"	GFS402SA25	25,3	19	50,80	71	23,80	55	35	21	22	M10	3/8"	0,54	
414	1"	GFS403SA30	30,3	25	57,15	81	27,76	65	42	25	22	M12	7/16"	0,82	
276	1"1/4	GFS404SA38	38,3	32	66,68	95	31,75	78	45	27	25	M14	1/2"	1,28	
320	1"1/2	GFS405SA50	50,5	38	79,38	112	36,50	94	50	30	28	M16	5/8"	1,94	

La pressione di esercizio massima raccomandata si basa sulla flangia.

La massima pressione di lavoro del sistema è determinata dallo spessore e dal tipo di materiale del tubo utilizzato.

The maximum recommended working pressure is based on the flange.

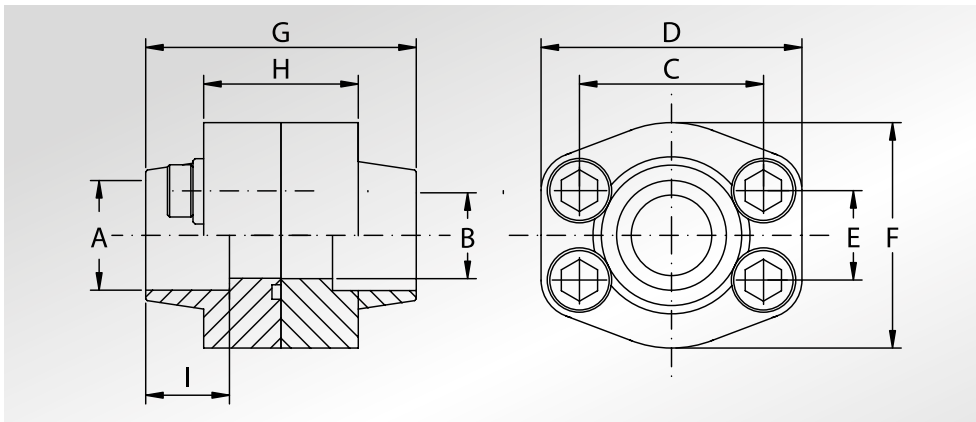
The working pressure of the system is determined by the thickness and the steel quality of the pipe.

DESIGNAZIONE PER ORDINE DESIGNATION FOR ORDER	Materiale / Material	
	S355	AISI 316L
Controflangia con fori di fissaggio filettati metrici Counter-flange with metric threaded fixing holes	GFS...SA	GFX...SA
Controflangia con fori di fissaggio filettati unc Counter-flange with unc threaded fixing holes	GFS...SAU	GFX...SAU

DOPPIE FLANGE A SALDARE DI TASCA



WELD IN DOUBLE FLANGES



Pressione max di esercizio raccomandata Kg/cm ²	Grandezza	Tipo	Dimensioni									Viti		Or tipo	Peso Kg
			Dimensions									Screws			
Maximum recommended working pressure Kg/cm ²	Size	Type	A	B	C	D	E	F	G	H	I	Metric	Unc	Or type	Weight Kg

SERIE 3000

345	1/2"	DFS080S	21,6	13	38,10	57	17,48	46	72	32	19	M8x30	5/16"x1"1/4	4075	0,56
345	1/2"	DFS080S038	17,5	13	38,10	57	17,48	46	72	32	19	M8x30	5/16"x1"1/4	4075	0,61
345	3/4"	DFS100S	27,2	19	47,63	65	22,23	50	72	36	19	M10x35	3/8"x1"1/2	4100	0,88
345	1"	DFS102S	34,0	25	52,37	70	26,19	55	76	36	19	M10x35	3/8"x1"1/2	4131	1,03
276	1"1/4	DFS104S	42,8	32	58,72	79	30,18	68	82	42	22	M10x40	7/16"x1"3/4	4150	1,50
207	1"1/2	DFS106S	48,6	38	69,85	93	35,71	78	90	50	24	M12x45	1/2"x1"3/4	4187	2,37
207	2"	DFS108S	61,0	51	77,77	102	42,88	90	90	50	26	M12x45	1/2"x1"3/4	4225	2,56
172	2"1/2	DFS110S	76,6	63	88,90	114	50,80	105	100	50	30	M12x45	1/2"x1"3/4	4275	3,13
138	3"	DFS112S	90,5	73	106,38	134	61,93	124	100	54	34	M16x50	5/8"x2"	4337	4,67
34	3"1/2	DFS114S	103,0	89	120,65	152	69,85	136	96	54	34	M16x50	5/8"x2"	4387	5,18
34	4"	DFS116S	115,5	99	130,18	162	77,77	146	96	54	34	M16x50	5/8"x2"	4437	5,98
34	5"	DFS118S	142,0	120	152,40	184	92,08	180	100	56	28	M16x55	5/8"x2"1/4	4537	12,12

SERIE 6000

414	1/2"	DFS401S012	21,6	13	40,49	57	18,24	46	72	32	19	M8x30	5/16"x1"1/4	4075	0,57
414	1/2"	DFS401S038	17,5	13	40,49	57	18,24	46	72	32	19	M8x30	5/16"x1"1/4	4075	0,62
414	3/4"	DFS402S	27,2	19	50,80	71	23,80	55	70	42	22	M10x40	3/8"x1"1/2	4100	1,14
414	1"	DFS403S	34,0	25	57,15	81	27,76	65	84	50	22	M12x45	7/16"x1"3/4	4131	1,76
414	1"1/4	DFS404S	42,8	32	66,68	95	31,75	78	90	54	25	M14x45	-	4150	2,62
375	1"1/4	DFS404SL13	42,8	32	66,68	95	31,75	78	90	54	25	M12x45	1/2"x1"3/4	4150	2,62
320	1"1/2	DFS405S	48,6	38	79,38	112	36,50	94	100	60	28	M16x55	5/8"x2"1/4	4187	4,23
250	2"	DFS406S	61,0	51	96,82	134	44,45	114	130	74	24	M20x70	3/4"x2"3/4	4225	7,63
230	2"1/2	DFS507S *	76,6	63	123,80	180	58,70	152	160	96	30	M24x80	7/8"x3"1/4	4275	15,85
200	3"	DFS508S *	90,5	73	152,40	208	71,40	178	180	116	30	M30x100	1"1/8x3"1/2	4337	26,2

La pressione di esercizio massima raccomandata si basa sulla flangia.

La massima pressione di lavoro del sistema è determinata dallo spessore e dal tipo di materiale del tubo utilizzato.

The maximum recommended working pressure is based on the flange.

The working pressure of the system is determined by the thickness and the steel quality of the pipe.

DESIGNAZIONE PER ORDINE DESIGNATION FOR ORDER	Materiale / Material	
	S355	AISI 316L
Flangia + contoflangia + set viti metriche Flange + counter-flange + metric screws set	DFS...SM	DFX...SM
Flangia + contoflangia + set viti unc Flange + counter-flange + unc screws set	DFS...SU	DFX...SU

NOTE / NOTES

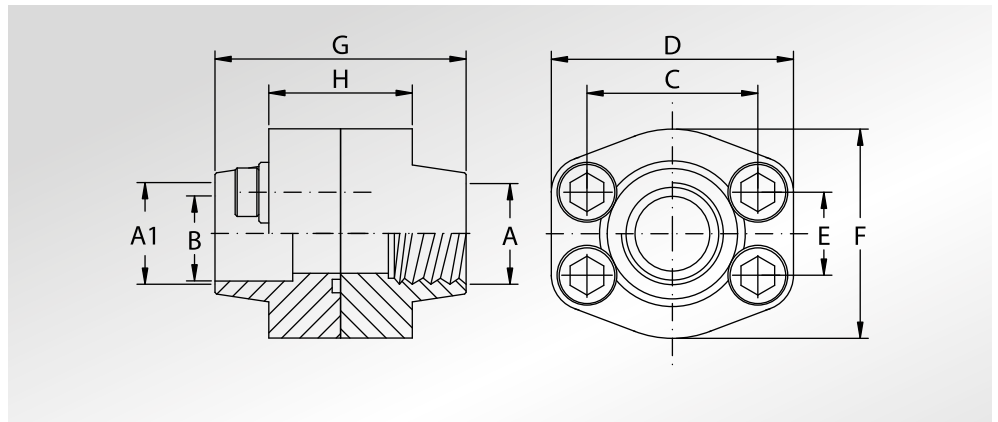
set viti unc disponibili solo in acciaio al carbonio
unc screws set available only in carbon steel

*set viti disponibili solo metriche in acciaio al carbonio
*screws set available only metric in carbon steel



DOPPIE FLANGE FILETTATE GAS E A SALDARE DI TASCA

BSP THREADED AND WELD IN DOUBLE FLANGES



Pressione max di esercizio raccomandata kg/cm ²	Grandezza	Tipo	Dimensioni									Viti		Or tipo	Peso Kg
Maximum recommended working pressure kg/cm ²	Size	Type	Dimensions									Screws		Or type	Weight Kg
			A	A1	B	C	D	E	F	G	H	Metric	Unc		

SERIE 3000

345	1/2"	DFS080F	1/2" GAS	21,6	13	38,10	57	17,48	46	72	32	M8x30	5/16"x1"1/4	4075	0,57
345	1/2"	DFS080F038	3/8" GAS	17,5	13	38,10	57	17,48	46	72	32	M8x30	5/16"x1"1/4	4075	0,61
345	3/4"	DFS100F	3/4" GAS	27,2	19	47,63	65	22,23	50	72	36	M10x35	3/8"x1"1/2	4100	0,90
345	1"	DFS102F	1" GAS	34,0	25	52,37	70	26,19	55	76	36	M10x35	3/8"x1"1/2	4131	1,06
276	1"1/4	DFS104F	1"1/4 GAS	42,8	32	58,72	79	30,18	68	82	42	M10x40	7/16"x1"3/4	4150	1,50
207	1"1/2	DFS106F	1"1/2 GAS	48,6	38	69,85	93	35,71	78	90	50	M12x45	1/2"x1"3/4	4187	2,36
207	2"	DFS108F	2" GAS	61,0	51	77,77	102	42,88	90	90	50	M12x45	1/2"x1"3/4	4225	2,61
172	2"1/2	DFS110F	2"1/2 GAS	76,6	63	88,90	114	50,80	105	100	50	M12x45	1/2"x1"3/4	4275	3,40
138	3"	DFS112F	3" GAS	90,5	73	106,38	134	61,93	124	100	54	M16x50	5/8"x2"	4337	4,89
34	3"1/2	DFS114F	3"1/2 GAS	103,0	89	120,65	152	69,85	136	96	54	M16x50	5/8"x2"	4387	5,29
34	4"	DFS116F	4" GAS	115,5	99	130,18	162	77,77	146	96	54	M16x50	5/8"x2"	4437	6,00
34	5"	DFS118F	5" GAS	142,0	120	152,40	184	92,08	180	100	56	M16x55	5/8"x2"1/4	4537	12,12

SERIE 6000

414	1/2"	DFS401F012	1/2" GAS	21,6	13	40,49	57	18,24	46	72	32	M8x30	5/16"x1"1/4	4075	0,57
414	1/2"	DFS401F038	3/8" GAS	17,5	13	40,49	57	18,24	46	72	32	M8x30	5/16"x1"1/4	4075	0,62
414	3/4"	DFS402F	3/4" GAS	27,2	19	50,80	71	23,80	55	70	42	M10x40	3/8"x1"1/2	4100	1,19
414	1"	DFS403F	1" GAS	34,0	25	57,15	81	27,76	65	84	50	M12x45	7/16"x1"3/4	4131	1,88
414	1"1/4	DFS404F	1"1/4 GAS	42,8	32	66,68	95	31,75	78	90	54	M14x45	-	4150	2,63
375	1"1/4	DFS404FL13	1"1/4 GAS	42,8	32	66,68	95	31,75	78	90	54	M12x45	1/2"x1"3/4	4150	2,63
320	1"1/2	DFS405F	1"1/2 GAS	48,6	38	79,38	112	36,50	94	100	60	M16x55	5/8"x2"1/4	4187	4,19
250	2"	DFS406F	2" GAS	61,0	51	96,82	134	44,45	114	130	74	M20x70	3/4"x2"3/4	4225	7,64
230	2"1/2	DFS507F *	2"1/2 GAS	76,6	63	123,80	180	58,70	152	160	96	M24x80	7/8"x3"1/4	4275	15,85
200	3"	DFS508F *	3" GAS	90,5	73	152,40	208	71,40	178	180	116	M30x100	1"1/8"x3"1/2	4337	26,2

La pressione di esercizio massima raccomandata si basa sulla flangia.

La massima pressione di lavoro del sistema è determinata dallo spessore e dal tipo di materiale del tubo utilizzato.

The maximum recommended working pressure is based on the flange.

The working pressure of the system is determined by the thickness and the steel quality of the pipe.

DESIGNAZIONE PER ORDINE DESIGNATION FOR ORDER	Materiale / Material	
	S355	AISI 316L
Flangia a saldare di tasca + controflangia filettata gas + set viti metriche Weld in flange + BSP threaded counter-flange + metric screws set	DFS...FM	DFX...FM
Flangia a saldare di tasca + controflangia filettata gas + set viti unc Weld in flange + BSP threaded counter-flange + unc screws set	DFS...FU	DFX...FU

NOTE / NOTES

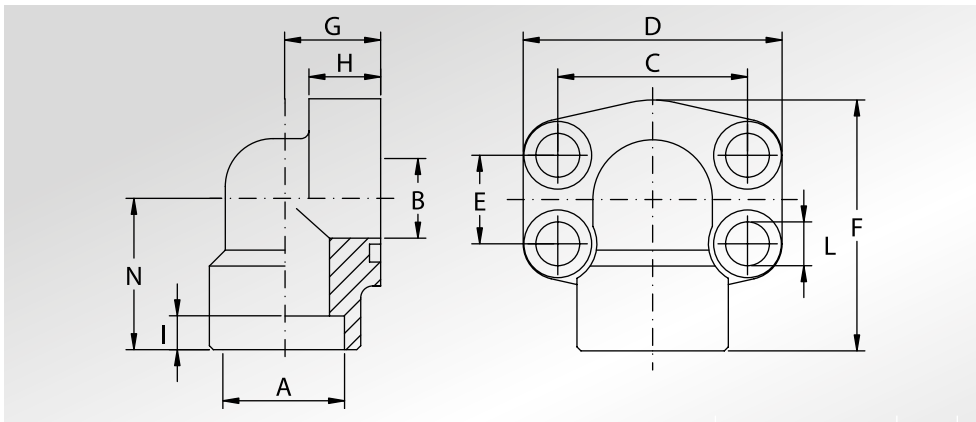
set viti unc disponibili solo in acciaio al carbonio
unc screws set available only in carbon steel

*set viti disponibili solo metriche in acciaio al carbonio
*screws set available only metric in carbon steel

FLANGE A 90° A SALDARE DI TASCA



WELD IN 90° FLANGES



Pressione max di esercizio raccomandata Kg/cm ²	Grandezza	Tipo	Dimensioni											Viti		Or tipo	Peso Kg
Maximum recommended working pressure Kg/cm ²	Size	Type	Dimensions											Screws		Or type	Weight Kg
			A	B	C	D	E	F	G	H	I	L	N	Metric	Unc		

SERIE 3000

345	1/2"	AFS08090S	21,6	13	38,10	54	17,48	60	20	16	10	9	37	M8x30	5/16"x1"1/4	4075	0,28
345	1/2"	AFS08090S038	17,5	13	38,10	54	17,48	60	20	16	10	9	37	M8x30	5/16"x1"1/4	4075	0,29
345	3/4"	AFS10090S	27,2	19	47,63	65	22,23	63	24	18	10	11	38	M10x35	3/8"x1"1/2	4100	0,45
345	1"	AFS10290S	34,0	25	52,37	70	26,19	70	28	19	12	11	43	M10x35	3/8"x1"1/2	4131	0,56
276	1"1/4	AFS10490S	42,8	32	58,72	79	30,18	85	34	21	14	11,5	51	M10x40	7/16"x1"3/4	4150	0,89
207	1"1/2	AFS10690S	48,6	38	69,85	93	35,71	95	38	25	16	13,5	56	M12x45	1/2"x1"3/4	4187	1,18
207	2"	AFS10890S	61,0	51	77,77	110	42,88	110	42	25	18	13,5	65	M12x45	1/2"x1"3/4	4225	2,06

SERIE 6000

414	1/2"	AFS40190S012	21,6	13	40,49	54	18,24	60	20	16	10	9	37	M8x30	5/16"x1"1/4	4075	0,28
414	1/2"	AFS40190S038	17,5	13	40,49	54	18,24	60	20	16	10	9	37	M8x30	5/16"x1"1/4	4075	0,29
414	3/4"	AFS40290S	27,2	19	50,80	70	23,80	70	28	19	12	11	43	M10x40	3/8"x1"1/2	4100	0,69
414	1"	AFS40390S	34,0	25	57,15	79	27,76	85	34	21	14	13	51	M12x45	7/16"x1"3/4	4131	1,11
375	1"1/4	AFS40490S	42,8	32	66,68	93	31,75	95	38	25	16	15	56	M14x45	-	4150	1,45
375	1"1/4	AFS40490SL13	42,8	32	66,68	93	31,75	95	38	25	16	13,5	56	M12x45	1/2"x1"3/4	4150	1,45
320	1"1/2	AFS40590S	48,6	38	79,38	110	36,50	110	42	25	18	17	65	M16x55	5/8"x2"1/4	4187	2,75
250	2"	AFS40690S	61,0	51	96,82	134	44,45	132	45	35	25	21	75	M20x70	3/4"x2"3/4	4225	3,85

La pressione di esercizio massima raccomandata si basa sulla flangia.

La massima pressione di lavoro del sistema è determinata dallo spessore e dal tipo di materiale del tubo utilizzato.

The maximum recommended working pressure is based on the flange.

The working pressure of the system is determined by the thickness and the steel quality of the pipe.

DESIGNAZIONE PER ORDINE DESIGNATION FOR ORDER	Materiale / Material	
	S355	AISI 316L
Solo flangia Only flange	AFS...90S	AFX...90S
Flangia completa di viti metriche, grower e o-ring Flange complete of metric screws, grower type washers and o-ring	AFS...90SM	AFX...90SM
Flangia completa di viti unc, grower e o-ring Flange complete of unc screws, grower type washers and o-ring	AFS...90SU	AFX...90SU

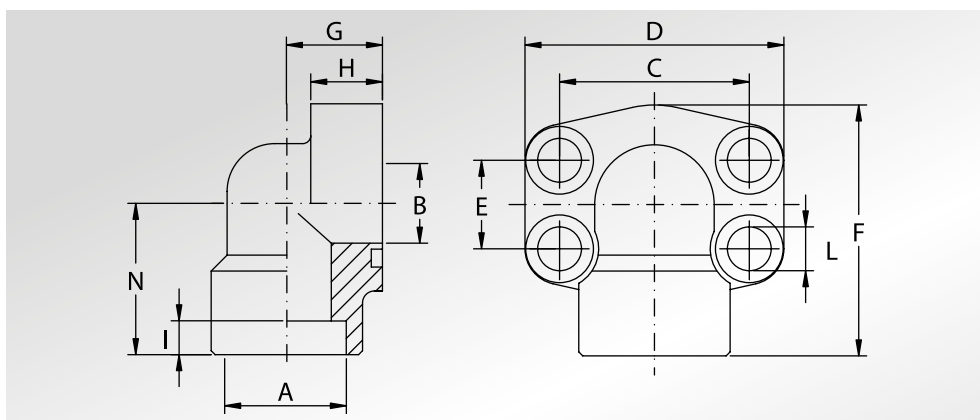
NOTE / NOTES

set viti unc disponibili solo in acciaio al carbonio
unc screws set available only in carbon steel



FLANGE A 90° A SALDARE DI TASCA TUBO METRICO

METRIC PIPE WELD IN 90° FLANGES



Pressione max di esercizio raccomandata Kg/cm ²	Grandezza	Tipo	Dimensioni										Viti		Or tipo	Peso Kg	
Maximum recommended working pressure Kg/cm ²	Size	Type	Dimensions										Screws		Or type	Weight Kg	
			A	B	C	D	E	F	G	H	I	L	N	Metric	Unc		

SERIE 3000

345	1/2"	AFS08090SA20	20,3	13	38,10	54	17,48	60	20	16	10	9	37	M8x30	5/16"x1"1/4	4075	0,28
345	3/4"	AFS10090SA25	25,3	19	47,63	65	22,23	63	24	18	10	11	38	M10x35	3/8"x1"1/2	4100	0,45
345	1"	AFS10290SA30	30,3	25	52,37	70	26,19	70	28	19	12	11	43	M10x35	3/8"x1"1/2	4131	0,56
276	1"1/4	AFS10490SA38	38,3	32	58,72	79	30,18	85	34	21	14	11,5	51	M10x40	7/16"x1"3/4	4150	0,89
207	1"1/2	AFS10690SA50	50,5	38	69,85	93	35,71	95	38	25	16	13,5	56	M12x45	1/2"x1"3/4	4187	1,18

SERIE 6000

414	1/2"	AFS40190SA20	20,3	13	40,49	54	18,24	60	20	16	10	9	37	M8x30	5/16"x1"1/4	4075	0,28
414	3/4"	AFS40290SA25	25,3	19	50,80	70	23,80	70	28	19	12	11	43	M10x40	3/8"x1"1/2	4100	0,69
414	1"	AFS40390SA30	30,3	25	57,15	79	27,76	85	34	21	14	13	51	M12x45	7/16"x1"3/4	4131	1,11
276	1"1/4	AFS40490SA38	38,3	32	66,68	93	31,75	95	38	25	16	15	56	M14x45	-	4150	1,45
276	1"1/4	AFS40490SA38L13	38,3	32	66,68	93	31,75	95	38	25	16	13,5	56	M12x45	1/2"x1"3/4	4150	1,45
320	1"1/2	AFS40590SA50	50,5	38	79,38	110	36,50	110	42	25	18	17	65	M16x55	5/8"x2"1/4	4187	2,75

La pressione di esercizio massima raccomandata si basa sulla flangia.

La massima pressione di lavoro del sistema è determinata dallo spessore e dal tipo di materiale del tubo utilizzato.

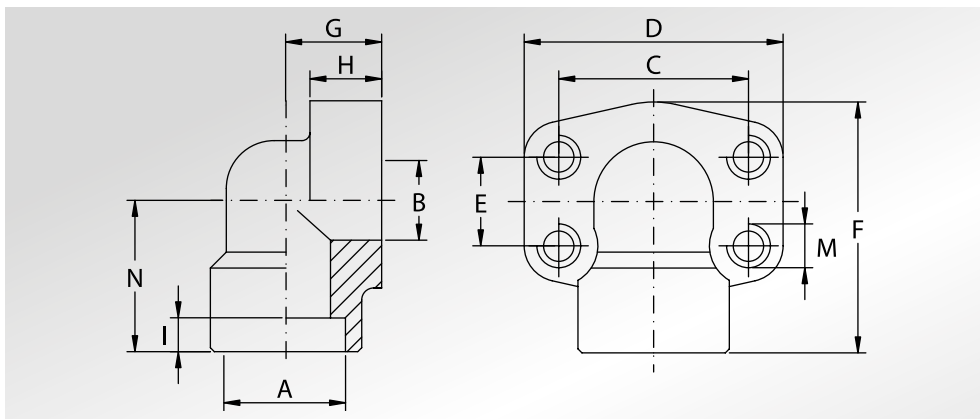
The maximum recommended working pressure is based on the flange.

The working pressure of the system is determined by the thickness and the steel quality of the pipe.

DESIGNAZIONE PER ORDINE DESIGNATION FOR ORDER	Materiale / Material	
	S355	AISI 316L
Solo flangia Only flange	AFS...90SA	AFX...90SA
Flangia completa di viti metriche, grower e o-ring Flange complete of metric screws, grower type washers and o-ring	AFS...90SA...M	AFX...90SA...M
Flangia completa di viti unc, grower e o-ring Flange complete of unc screws, grower type washers and o-ring	AFS...90SA...U	AFX...90SA...U

NOTE / NOTES

set viti unc disponibili solo in acciaio al carbonio
unc screws set available only in carbon steel



**CONTROFLANGE
A 90° A SALDARE
DI TASCA**



**WELD IN 90°
COUNTER-FLANGES**

Pressione max di esercizio raccomandata Kg/cm ²	Grandezza	Tipo	Dimensioni											Peso Kg		
Maximum recommended working pressure Kg/cm ²	Size	Type	Dimensions											Weight Kg		
			A	B	C	D	E	F	G	H	I	N	M			
														Metric	Unc	
SERIE 3000																
345	1/2"	GFS08090S	21,6	13	38,10	54	17,48	60	20	16	10	37	M8	5/16"	0,28	
345	1/2"	GFS08090S038	17,5	13	38,10	54	17,48	60	20	16	10	37	M8	5/16"	0,29	
345	3/4"	GFS10090S	27,2	19	47,63	65	22,23	63	24	18	10	38	M10	3/8"	0,45	
345	1"	GFS10290S	34,0	25	52,37	70	26,19	70	28	19	12	43	M10	3/8"	0,56	
276	1"1/4	GFS10490S	42,8	32	58,72	79	30,18	85	34	21	14	51	M10	7/16"	0,89	
207	1"1/2	GFS10690S	48,6	38	69,85	93	35,71	95	38	25	16	56	M12	1/2"	1,18	
207	2"	GFS10890S	61,0	51	77,77	110	42,88	110	42	25	18	65	M12	1/2"	2,06	
SERIE 6000																
414	1/2"	GFS40190S012	21,6	13	40,49	54	18,24	60	20	16	10	37	M8	5/16"	0,28	
414	1/2"	GFS40190S038	17,5	13	40,49	54	18,24	60	20	16	10	37	M8	5/16"	0,29	
414	3/4"	GFS40290S	27,2	19	50,80	70	23,80	70	28	19	12	43	M10	3/8"	0,69	
414	1"	GFS40390S	34,0	25	57,15	79	27,76	85	34	21	14	51	M12	7/16"	1,11	
375	1"1/4	GFS40490S	42,8	32	66,68	93	31,75	95	38	25	16	56	M14	1/2"	1,45	
320	1"1/2	GFS40590S	48,6	38	79,38	110	36,50	110	42	25	18	65	M16	5/8"	2,75	
250	2"	GFS40690S	61,0	51	96,82	134	44,45	132	45	35	25	75	M20	3/4"	3,85	

La pressione di esercizio massima raccomandata si basa sulla flangia.
La massima pressione di lavoro del sistema è determinata dallo spessore e dal tipo di materiale del tubo utilizzato.

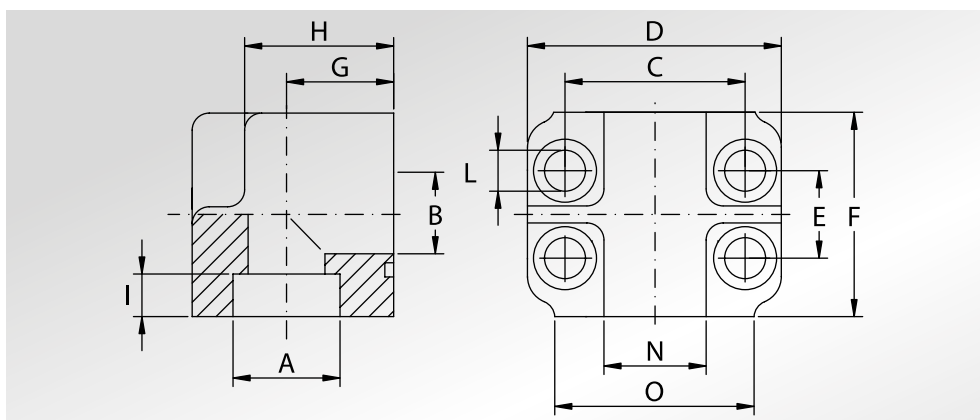
*The maximum recommended working pressure is based on the flange.
The working pressure of the system is determined by the thickness and the steel quality of the pipe.*

DESIGNAZIONE PER ORDINE DESIGNATION FOR ORDER	Materiale / Material	
	S355	AISI 316L
Controflangia con fori di fissaggio filettati metrici Counter-flange with metric threaded fixing holes	GFS...90S	GFX...90S
Controflangia con fori di fissaggio filettati UNC Counter-flange with UNC threaded fixing holes	GFS...90SU	GFX...90SU



FLANGE A 90° A SALDARE DI TASCA

WELD IN 90° FLANGES



Pressione max di esercizio raccomandata Kg/cm ²	Grandezza	Tipo	Dimensioni											Viti	Or tipo	Peso Kg	
Maximum recommended working pressure Kg/cm ²	Size	Type	Dimensions											Screws	Or type	Weight Kg	
			A	B	C	D	E	F	G	H	I	L	N	O	Metric		
SERIE 3000																	
345	3/4"	AFS20090S	27,2	19	47,63	66	22,23	46	19	27	5	11	28	48	M10x45	4100	0,52
345	1"	AFS20290S	34,0	25	52,37	71	26,19	55	22	34	6	11	32	50	M10x50	4131	0,87
276	1"1/4	AFS20490S	42,8	32	58,72	81	30,18	65	27	42	7	11,5	35	60	M10x60	4150	1,35
207	1"1/2	AFS20690S	48,6	38	69,85	95	35,71	75	32	50	8	13,5	42	70	M12x70	4187	2,15
207	2"	AFS20890S	61,0	51	77,77	112	42,88	90	40	63	10	13,5	50	80	M12x80	4225	3,70
172	2"1/2	AFS21090S *	76,6	63	88,90	120	50,80	118	53	99	15	13,5	-	-	M12x110	4275	8,20

SERIE 6000

414	3/4"	AFS70090S	27,2	19	50,80	71	23,80	55	22	34	6	11	32	50	M10x50	4100	0,97
414	1"	AFS70290S	34,0	25	57,15	81	27,76	65	27	42	7	13	35	60	M12x60	4131	1,50
375	1"1/4	AFS70490S	42,8	32	66,68	95	31,75	75	32	50	8	15	42	70	M14x70	4150	2,29
320	1"1/2	AFS70690S	48,6	38	79,38	112	36,50	90	40	63	10	17	50	80	M16x90	4187	4,08

La pressione di esercizio massima raccomandata si basa sulla flangia.

La massima pressione di lavoro del sistema è determinata dallo spessore e dal tipo di materiale del tubo utilizzato.

The maximum recommended working pressure is based on the flange.

The working pressure of the system is determined by the thickness and the steel quality of the pipe.

DESIGNAZIONE PER ORDINE DESIGNATION FOR ORDER	Materiale / Material S355
Solo flangia Only flange	AFS...90S
Flangia completa di viti metriche, grower e o-ring Flange complete of metric screws, grower type washers and o-ring	AFS...90SM

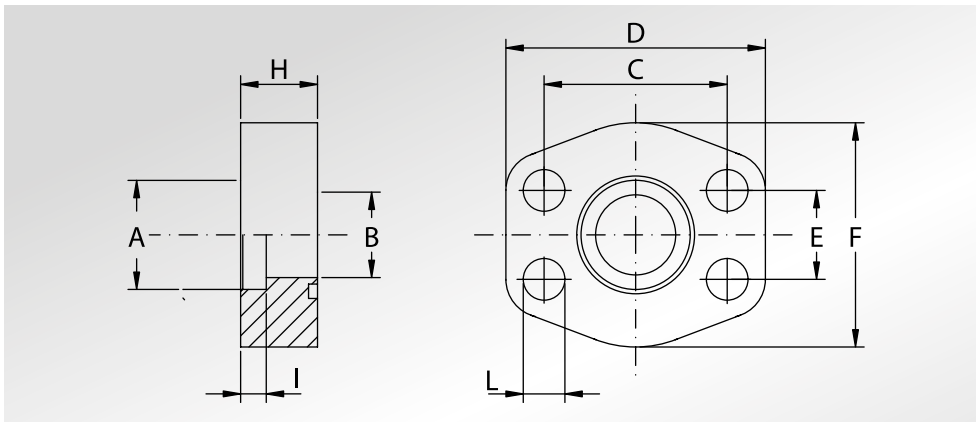
NOTE / NOTES

- * Ricavata da barra, viteria non disponibile
- * Obtained from bar, screws not available

FLANGE PIATTE A SALDARE DI TASCA



WELD IN FLAT FLANGES



Pressione max di esercizio raccomandata Kg/cm ²	Grandezza	Tipo	Dimensioni								Viti		Or tipo	Peso Kg	
Maximum recommended working pressure Kg/cm ²	Size	Type	Dimensions								Screws		Or type	Weight Kg	
			A	B	C	D	E	F	H	I	L	Metric	Unc		

SERIE 3000

40	1/2"	AFC080S	22,5	15	38,10	56	17,48	46	10	3	9	M8x25	5/16"x1"1/4	4075	0,12
40	3/4"	AFC100S	28,5	20	47,63	65	22,23	50	12	4	11	M10x30	3/8"x1"1/2	4100	0,20
40	1"	AFC102S	35,5	29	52,37	70	26,19	55	12	4	11	M10x30 *	3/8"x1"1/2	4131	0,25
40	1"1/4	AFC104S	42,5	34	58,72	79	30,18	68	12	4	11,5	M10x30 *	7/16"x1"3/4	4150	0,28
40	1"1/2	AFC106S	49,0	42	69,85	93	35,71	78	15	4	13,5	M12x35	1/2"x1"3/4	4187	0,50
40	2"	AFC108S	61,0	53	77,77	102	42,88	90	15	4	13,5	M12x35	1/2"x1"3/4	4225	0,59
40	2"1/2	AFC110S	77,0	64	88,90	114	50,80	105	15	4	13,5	M12x35	1/2"x1"3/4	4275	0,72
40	3"	AFC112S	90,0	80	106,38	134	61,93	124	20	5	17,5	M16x50	5/8"x2"	4337	1,25
40	3"1/2	AFC114S	103,0	93	120,65	152	69,85	136	20	5	17,5	M16x50	5/8"x2"	4387	1,50
40	4"	AFC116S	116,0	105	130,18	162	77,77	146	25	6	17,5	M16x50	5/8"x2"	4437	2,15
40	5"	AFC118S	141,0	126	152,40	190	92,08	170	28	8	17,5	M16x55	5/8"x2"1/4	4537	3,00

DESIGNAZIONE PER ORDINE DESIGNATION FOR ORDER	Materiale / Material	
	S355	AISI 316L
Solo flangia Only flange	AFC...S	AFCX...S
Flangia completa di viti metriche, grower e o-ring Flange complete of metric screws, grower type washers and o-ring	AFC...SM	AFCX...SM
Flangia completa di viti UNC, grower e o-ring Flange complete of UNC screws, grower type washers and o-ring	AFC...SU	AFCX...SU

NOTE / NOTES

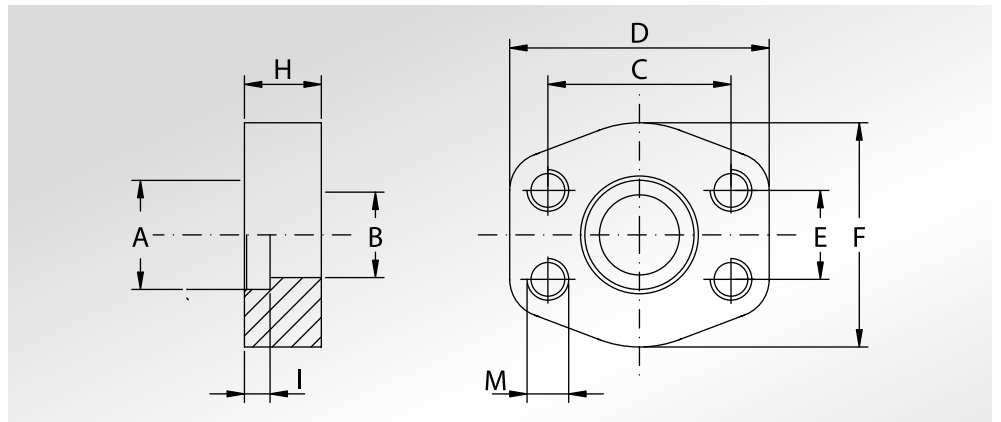
- * M10x35 Sulla versione inox
- * M10x35 on inox version

set viti unc disponibili solo in acciaio al carbonio
unc screws set available only in carbon steel



CONTROFLANGE PIATTE A SALDARE DI TASCA

WELD IN FLAT COUNTER-FLANGES



Pressione max di esercizio raccomandata Kg/cm ²	Grandezza	Tipo	Dimensioni										Peso Kg
			Dimensions										
Maximum recommended working pressure Kg/cm ²	Size	Type	A	B	C	D	E	F	H	I	M		Weight Kg
SERIE 3000													
40	1/2"	GFC080S	22,5	15	38,10	56	17,48	46	10	3	M8	5/16"	0,12
40	3/4"	GFC100S	28,5	20	47,63	65	22,23	50	12	4	M10	3/8"	0,20
40	1"	GFC102S	35,5	29	52,37	70	26,19	55	12	4	M10	3/8"	0,25
40	1"1/4	GFC104S	42,5	34	58,72	79	30,18	68	12	4	M10	7/16"	0,28
40	1"1/2	GFC106S	49,0	42	69,85	93	35,71	78	15	4	M12	1/2"	0,50
40	2"	GFC108S	61,0	53	77,77	102	42,88	90	15	4	M12	1/2"	0,59
40	2"1/2	GFC110S	77,0	64	88,90	114	50,80	105	15	4	M12	1/2"	0,72
40	3"	GFC112S	90,0	80	106,38	134	61,93	124	20	5	M16	5/8"	1,25
40	3"1/2	GFC114S	103,0	93	120,65	152	69,85	136	20	5	M16	5/8"	1,50
40	4"	GFC116S	116,0	105	130,18	162	77,77	146	25	6	M16	5/8"	2,15
40	5"	GFC118S	141,0	126	152,40	190	92,08	170	28	8	M16	5/8"	3,00

DESIGNAZIONE PER ORDINE DESIGNATION FOR ORDER	Materiale / Material	
	S355	AISI 316L
Controflangia con fori di fissaggio filettati metrici Counter-flange with metric threaded fixing holes	GFC...S	GFCX...S
Controflangia con fori di fissaggio filettati unc Counter-flange with unc threaded fixing holes	GFC...SU	GFCX...SU

LubeTeam Hydraulic S.r.l.

Administration and Headquarter:

Via Tufara Scautieri, 6

83018 - San Martino Valle Caudina (AV)

Office and Warehouse:

S.S. 7 Appia, Km. 237,00

82011 - Airola BN

ITALY

Tel. +39 0823 950 994

Fax +39 0823 412 546

www.lubeteam.it info@lubeteam.it

Italian VAT / C.F. e P.IVA: 01251720627

Follow us



This document is the property of LubeTeam Hydraulic S.r.l. All data reported here are for the exclusive use of the Receiver. Reproduction is not authorized without writing permission, in all or in part of the content of this document, in accordance to Law 633 art. 171, dated April 22, 1941.

Il presente documento è di proprietà della LubeTeam Hydraulic S.r.l. I dati riportati sono per esclusivo del destinatario. La riproduzione, di tutto o in parte, non è autorizzata senza permesso scritto secondo l'art. 171 della L. 633 del 22 Aprile 1941.