



OLEOTECNICA
Flange
Flange a saldare di testa



 HYDRAULIC
COMPONENTS
& FLUID CONTAMINATION
CONTROL



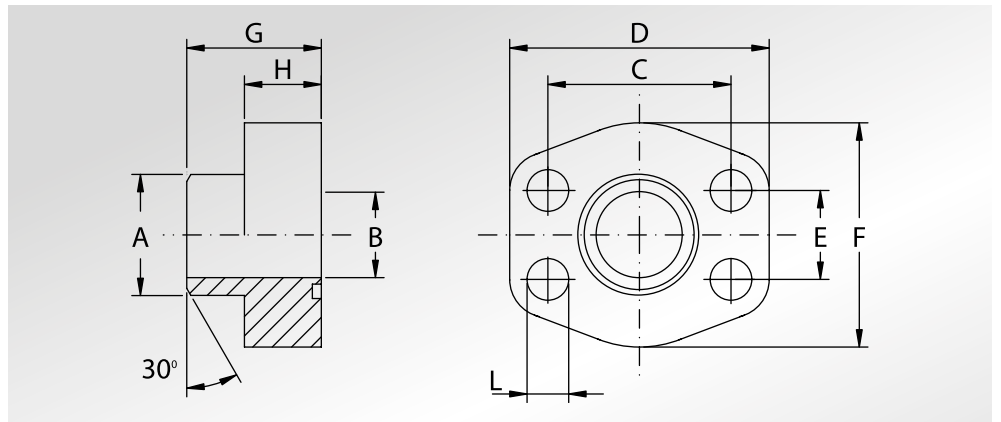
All trademarks belong to their respective owners; third party trademarks, product names, trade names, corporate names and company names mentioned may be trademarks of their respective owners or registered trademarks of other companies and are used for instructional purposes and for the benefit of the owner, without any end of Copyright infringement in force.

Tutti i marchi riportati appartengono ai legittimi proprietari; marchi di terzi, nomi di prodotti, nomi commerciali, nomi corporativi e società citati possono essere di proprietà dei rispettivi titolari o registrati da altre società e sono stati utilizzati a puro scopo esplicativo e a beneficio del possessore, senza alcun fine di violazione dei diritti di Copyright vigenti.



FLANGE A SALDARE DI TESTA SCH.80

WELD ON FLANGES SCH.80



Pressione max di esercizio raccomandata Kg/cm ²	Grandezza	Tipo	Dimensioni									Viti		Or tipo	Peso Kg
Maximum recommended working pressure Kg/cm ²	Size	Type	Dimensions									Screws		Or type	Weight Kg
			A	B	C	D	E	F	G	H	L	Metric	Unc		

SERIE 3000

345	1/2"	AFS080ST	21,5	13	38,10	57	17,48	46	36	16	9	M8x30	5/16"x1"1/4	4075	0,24
345	1/2"	AFS080ST038	17,5	13	38,10	57	17,48	46	36	16	9	M8x30	5/16"x1"1/4	4075	0,22
345	3/4"	AFS100ST	28,0	19	47,63	65	22,23	50	36	18	11	M10x35	3/8"x1"1/2	4100	0,35
345	1"	AFS102ST	34,0	25	52,37	70	26,19	55	38	18	11	M10x35	3/8"x1"1/2	4131	0,41
276	1"1/4	AFS104ST	42,8	32	58,72	79	30,18	68	41	21	11,5	M10x40	7/16"x1"3/4	4150	0,64
207	1"1/2	AFS106ST	48,6	38	69,85	93	35,71	78	44	25	13,5	M12x45	1/2"x1"3/4	4187	0,98
207	2"	AFS108ST	61,0	51	77,77	102	42,88	90	45	25	13,5	M12x45	1/2"x1"3/4	4225	1,14
172	2"1/2	AFS110ST	77,0	63	88,90	114	50,80	105	50	25	13,5	M12x45	1/2"x1"3/4	4275	1,55
138	3"	AFS112ST	92,0	73	106,38	134	61,93	124	50	27	17,5	M16x50	5/8"x2"	4337	2,33
34	3"1/2	AFS114ST	103,0	89	120,65	152	69,85	136	48	27	17,5	M16x50	5/8"x2"	4387	2,40
34	4"	AFS116ST	115,5	99	130,18	162	77,77	146	48	27	17,5	M16x50	5/8"x2"	4437	2,85
34	5"	AFS118ST	140,2	120	152,40	184	92,08	180	50	28	17,5	M16x55	5/8"x2"1/4	4537	5,20

SERIE 6000

414	1/2"	AFS401ST012	21,5	13	40,49	57	18,24	46	36	16	9	M8x30	5/16"x1"1/4	4075	0,24
414	1/2"	AFS401ST038	17,5	13	40,49	57	18,24	46	36	16	9	M8x30	5/16"x1"1/4	4075	0,22
414	3/4"	AFS402ST	28,0	19	50,80	71	23,80	55	35	21	11	M10x40	3/8"x1"1/2	4100	0,48
414	1"	AFS403ST	34,0	25	57,15	79	27,76	68	41	21	13	M12x45	7/16"x1"3/4	4131	0,64
375	1"1/4	AFS404ST	42,8	32	66,68	93	31,75	78	44	25	15	M14x45	-	4150	1,00
375	1"1/4	AFS404STL13	42,8	32	66,68	93	31,75	78	44	25	13,5	M12x45	1/2"x1"3/4	4150	1,00
320	1"1/2	AFS405ST	48,6	38	79,38	112	36,50	94	55	30	17	M16x55	5/8"x2"1/4	4187	1,68
250	2"	AFS406ST	61,0	51	96,82	134	44,45	114	65	37	21	M20x70	3/4"x2"3/4	4225	2,86
230	2"1/2	AFS507ST *	76,6	63	123,80	180	58,70	152	80	48	26	M24x80	7/8"x3"1/4	4275	6,70
200	3"	AFS508ST *	90,0	73	152,40	208	71,40	178	90	58	31	M30x100	1"1/8"x3"1/2	4337	10,85

PER QUESTA TIPOLOGIA DI PRODOTTO, VERIFICATE SEMPRE SE LA QUOTA "A" E "B" CORRISPONDE ALLA SCHEDULA DEL VOSTRO TUBO

FOR THIS KIND OF PRODUCT, PLEASE ALWAYS VERIFY IF DIMENSION "A" AND "B" CORRESPOND TO THE SCHEDULE OF YOUR TUBE

La pressione di esercizio massima raccomandata si basa sulla flangia.

La massima pressione di lavoro del sistema è determinata dallo spessore e dal tipo di materiale del tubo utilizzato.

The maximum recommended working pressure is based on the flange.

The working pressure of the system is determined by the thickness and the steel quality of the pipe.

DESIGNAZIONE PER ORDINE DESIGNATION FOR ORDER	Materiale / Material	
	S355	AISI 316L
Solo flangia Only flange	AFS...ST	AFX...ST
Flangia completa di viti metriche, grower e o-ring Flange complete of metric screws, grower type washers and o-ring	AFS...STM	AFX...STM
Flangia completa di viti unc, grower e o-ring Flange complete of unc screws, grower type washers and o-ring	AFS...STU	AFX...STU

NOTE / NOTES

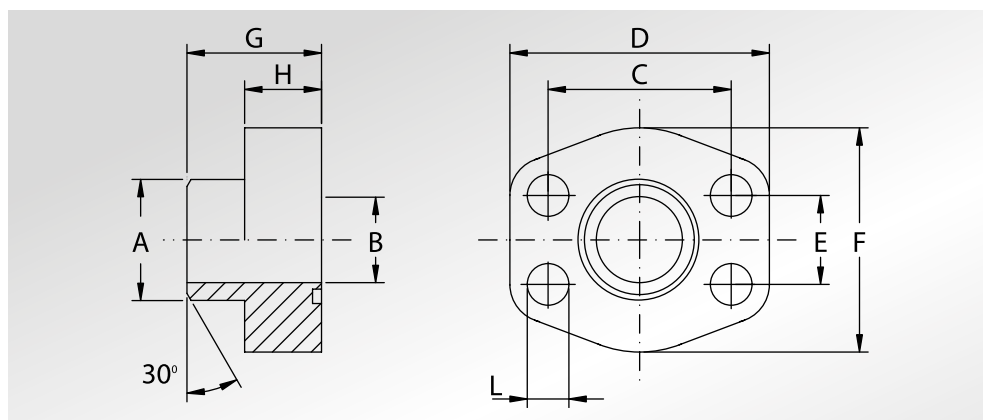
set viti unc disponibili solo in acciaio al carbonio
unc screws set available only in carbon steel

*set viti disponibili solo metriche in acciaio al carbonio
*screws set available only metric in carbon steel

FLANGE A SALDARE DI TESTA SCH.160



WELD ON FLANGES SCH.160



Pressione max di esercizio raccomandata Kg/cm ²	Grandezza	Tipo	Dimensioni									Viti		Or tipo	Peso Kg
Maximum recommended working pressure Kg/cm ²	Size	Type	Dimensions									Screws		Or type	Weight Kg
			A	B	C	D	E	F	G	H	L	Metric	Unc		

SERIE 3000

345	1/2"	AFS080STB11	21,5	11,8	38,10	57	17,48	46	36	16	9	M8x30	5/16"x1"1/4	4075	0,24
345	3/4"	AFS100STB15	28,0	15,6	47,63	65	22,23	50	36	18	11	M10x35	3/8"x1"1/2	4100	0,35
345	1"	AFS102STB20	34,0	20,7	52,37	70	26,19	55	38	18	11	M10x35	3/8"x1"1/2	4131	0,41
276	1"1/4	AFS104STB29	42,8	29,5	58,72	79	30,18	68	41	21	11,5	M10x40	7/16"x1"3/4	4150	0,64
207	1"1/2	AFS106STB34	48,6	34	69,85	93	35,71	78	44	25	13,5	M12x45	1/2"x1"3/4	4187	0,98
207	2"	AFS108STB42	61,0	42,8	77,77	102	42,88	90	45	25	13,5	M12x45	1/2"x1"3/4	4225	1,14
172	2"1/2	AFS110STB54	77,0	54	88,90	114	50,80	105	50	25	13,5	M12x45	1/2"x1"3/4	4275	1,55
138	3"	AFS112STB67	92,0	67,7	106,38	134	61,93	124	50	27	17,5	M16x50	5/8"x2"	4337	2,33
138	4"	AFS116STB87	115,5	87,3	130,18	162	77,77	146	48	27	17,5	M16x50	5/8"x2"	4437	2,85
138	5"	AFS118STB109	140,2	109,5	152,40	184	92,08	180	50	28	17,5	M16x55	5/8"x2"1/4	4537	5,20

SERIE 6000

414	1/2"	AFS401ST012B11	21,5	11,8	40,49	57	18,24	46	36	16	9	M8x30	5/16"x1"1/4	4075	0,24
414	3/4"	AFS402STB15	28,0	15,6	50,80	71	23,80	55	35	21	11	M10x40	3/8"x1"1/2	4100	0,48
414	1"	AFS403STB20	34,0	20,7	57,15	79	27,76	68	42	25	13	M12x45	7/16"x1"3/4	4131	0,64
414	1"1/4	AFS404STB29	42,8	29,5	66,68	93	31,75	78	44	25	15	M14x45	-	4150	1,00
414	1"1/4	AFS404STB29 L13	42,8	29,5	66,68	93	31,75	78	44	25	13,5	M12x45	1/2"x1"3/4	4150	1,00
414	1"1/2	AFS405STB34	48,6	34	79,38	112	36,50	94	55	28	17	M16x55	5/8"x2"1/4	4187	1,68
414	2"	AFS406STB42	61,0	42,8	96,82	134	44,45	114	65	37	21	M20x70	3/4"x2"3/4	4225	2,86
350	2"1/2	AFS507STB54 *	76,6	54	123,80	180	58,70	152	80	48	26	M24x80	7/8"x3"1/4	4275	7,20
350	3"	AFS508STB67 *	90,0	67,7	152,40	208	71,40	178	90	58	31	M30x100	1"1/8"x3"1/2	4337	11,25

PER QUESTA TIPOLOGIA DI PRODOTTO, VERIFICATE SEMPRE SE LA QUOTA "A" E "B" CORRISPONDE ALLA SCHEDULA DEL VOSTRO TUBO

FOR THIS KIND OF PRODUCT, PLEASE ALWAYS VERIFY IF DIMENSION "A" AND "B" CORRESPOND TO THE SCHEDULE OF YOUR TUBE

La pressione di esercizio massima raccomandata si basa sulla flangia.

La massima pressione di lavoro del sistema è determinata dallo spessore e dal tipo di materiale del tubo utilizzato.

The maximum recommended working pressure is based on the flange.

The working pressure of the system is determined by the thickness and the steel quality of the pipe.

DESIGNAZIONE PER ORDINE DESIGNATION FOR ORDER	Materiale / Material	
	S355	AISI 316L
Solo flangia Only flange	AFS...STB	AFX...STB
Flangia completa di viti metriche, grower e o-ring Flange complete of metric screws, grower type washers and o-ring	AFS...STB...M	AFX...STB...M
Flangia completa di viti unc, grower e o-ring Flange complete of unc screws, grower type washers and o-ring	AFS...STB...U	AFX...STB...U

NOTE / NOTES

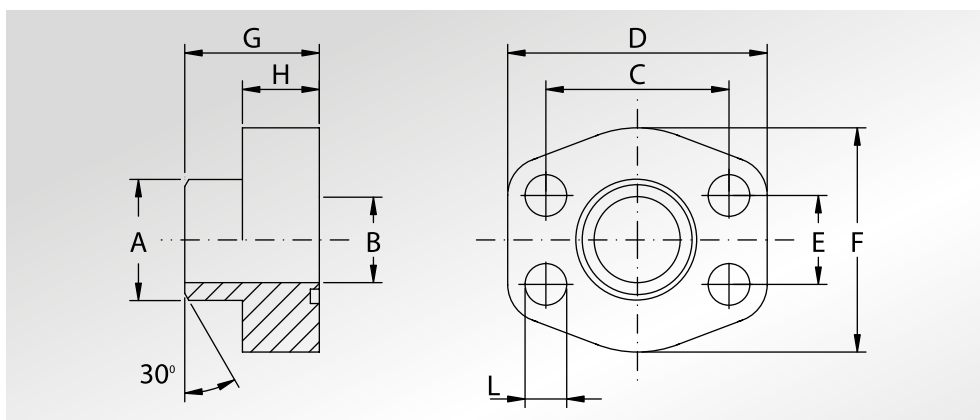
set viti unc disponibili solo in acciaio al carbonio
unc screws set available only in carbon steel

*set viti disponibili solo metriche in acciaio al carbonio
*screws set available only metric in carbon steel



FLANGE A SALDARE DI TESTA SCH.XXS

WELD ON FLANGES SCH.XXS



Pressione max di esercizio raccomandata Kg/cm ²	Grandezza	Tipo	Dimensioni									Viti		Or tipo	Peso Kg
Maximum recommended working pressure Kg/cm ²	Size	Type	Dimensions									Screws		Or type	Weight Kg
			A	B	C	D	E	F	G	H	L	Metric	Unc		

SERIE 3000

345	1/2"	AFS080STB6	21,5	6,3	38,10	57	17,48	46	36	16	9	M8x30	5/16"x1"1/4	4075	0,24
345	3/4"	AFS100STB11	28,0	11,0	47,63	65	22,23	50	36	18	11	M10x35	3/8"x1"1/2	4100	0,35
345	1"	AFS102STB15	34,0	15,2	52,37	70	26,19	55	38	18	11	M10x35	3/8"x1"1/2	4131	0,41
276	1"1/4	AFS104STB22	42,8	22,8	58,72	79	30,18	68	41	21	11,5	M10x40	7/16"x1"3/4	4150	0,64
207	1"1/2	AFS106STB28	48,6	28,0	69,85	93	35,71	78	44	25	13,5	M12x45	1/2"x1"3/4	4187	0,98
207	2"	AFS108STB38	61,0	38,2	77,77	102	42,88	90	45	25	13,5	M12x45	1/2"x1"3/4	4225	1,14
172	2"1/2	AFS110STB45	77,0	45,0	88,90	114	50,80	105	50	25	13,5	M12x45	1/2"x1"3/4	4275	1,55
138	3"	AFS112STB58	92,0	58,4	106,38	134	61,93	124	50	27	17,5	M16x50	5/8"x2"	4337	2,33
138	4"	AFS116STB80	115,5	80,0	130,18	162	77,77	146	48	27	17,5	M16x50	5/8"x2"	4437	2,85
138	5"	AFS118STB102	140,2	102,9	152,40	184	92,08	180	50	28	17,5	M16x55	5/8"x2"1/4	4537	5,20

SERIE 6000

414	1/2"	AFS401ST012B6	21,5	6,3	40,49	57	18,24	46	36	16	9	M8x30	5/16"x1"1/4	4075	0,24
414	3/4"	AFS402STB11	28,0	11,0	50,80	71	23,80	55	35	21	11	M10x40	3/8"x1"1/2	4100	0,48
414	1"	AFS403STB15	34,0	15,2	57,15	79	27,76	68	42	25	13	M12x45	7/16"x1"3/4	4131	0,64
414	1"1/4	AFS404STB22	42,8	22,8	66,68	93	31,75	78	44	25	15	M14x45	-	4150	1,00
414	1"1/4	AFS404STB22 L13	42,8	22,8	66,68	93	31,75	78	44	25	13,5	M12x45	1/2"x1"3/4	4150	1,00
414	1"1/2	AFS405STB28	48,6	28,0	79,38	112	36,50	94	55	28	17	M16x55	5/8"x2"1/4	4187	1,68
414	2"	AFS406STB38	61,0	38,2	96,82	134	44,45	114	65	37	21	M20x70	3/4"x2"3/4	4225	2,86
414	2"1/2	AFS507STB45 *	76,6	45,0	123,80	180	58,70	152	80	48	26	M24x80	7/8"x3"1/4	4275	7,58
414	3"	AFS508STB58 *	90,0	58,4	152,40	208	71,40	178	90	58	31	M30x100	1"1/8"x3"1/2	4337	11,85

PER QUESTA TIPOLOGIA DI PRODOTTO, VERIFICATE SEMPRE SE LA QUOTA "A" E "B" CORRISPONDE ALLA SCHEDULA DEL VOSTRO TUBO

FOR THIS KIND OF PRODUCT, PLEASE ALWAYS VERIFY IF DIMENSION "A" AND "B" CORRESPOND TO THE SCHEDULE OF YOUR TUBE

La pressione di esercizio massima raccomandata si basa sulla flangia.

La massima pressione di lavoro del sistema è determinata dallo spessore e dal tipo di materiale del tubo utilizzato.

The maximum recommended working pressure is based on the flange.

The working pressure of the system is determined by the thickness and the steel quality of the pipe.

DESIGNAZIONE PER ORDINE DESIGNATION FOR ORDER	Materiale / Material	
	S355	AISI 316L
Solo flangia Only flange	AFS...STB	AFX...STB
Flangia completa di viti metriche, grower e o-ring Flange complete of metric screws, grower type washers and o-ring	AFS...STB...M	AFX...STB...M
Flangia completa di viti unc, grower e o-ring Flange complete of unc screws, grower type washers and o-ring	AFS...STB...U	AFX...STB...U

NOTE / NOTES

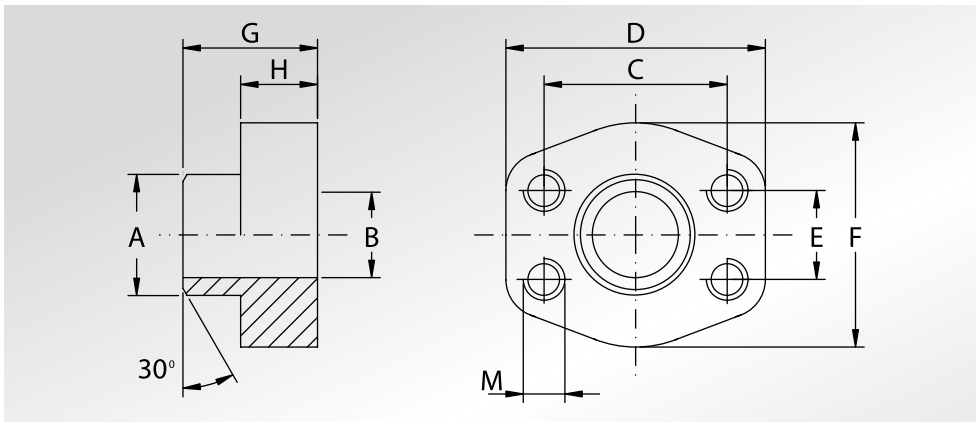
set viti unc disponibili solo in acciaio al carbonio
unc screws set available only in carbon steel

*set viti disponibili solo metriche in acciaio al carbonio
*screws set available only metric in carbon steel

**CONTROFLANGE
A SALDARE
DI TESTA SCH.80**



**WELD ON
COUNTER-FLANGES
SCH.80**



Pressione max di esercizio raccomandata Kg/cm ²	Grandezza	Tipo	Dimensioni										Peso Kg
Maximum recommended working pressure Kg/cm ²	Size	Type	Dimensions										Weight Kg
			A	B	C	D	E	F	G	H	M		

SERIE 3000

												Metric	Unc	
345	1/2"	GFS080ST	21,5	13	38,10	57	17,48	46	36	16		M8	5/16"	0,25
345	1/2"	GFS080ST038	17,5	13	38,10	57	17,48	46	36	16		M8	5/16"	0,23
345	3/4"	GFS100ST	28,0	19	47,63	65	22,23	50	36	18		M10	3/8"	0,39
345	1"	GFS102ST	34,0	25	52,37	70	26,19	55	38	18		M10	3/8"	0,45
276	1"1/4	GFS104ST	42,8	32	58,72	79	30,18	68	41	21		M10	7/16"	0,69
207	1"1/2	GFS106ST	48,6	38	69,85	93	35,71	78	44	25		M12	1/2"	1,05
207	2"	GFS108ST	61,0	51	77,77	102	42,88	90	45	25		M12	1/2"	1,22
172	2"1/2	GFS110ST	77,0	63	88,90	114	50,80	105	50	25		M12	1/2"	1,63
138	3"	GFS112ST	92,0	73	106,38	134	61,93	124	50	27		M16	5/8"	2,42
34	3"1/2	GFS114ST	103,0	89	120,65	152	69,85	136	48	27		M16	5/8"	2,49
34	4"	GFS116ST	115,5	99	130,18	162	77,77	146	48	27		M16	5/8"	2,94
34	5"	GFS118ST	140,2	120	152,40	184	92,08	180	50	28		M16	5/8"	5,00

SERIE 6000

414	1/2"	GFS401ST012	21,5	13	40,49	57	18,24	46	36	16		M8	5/16"	0,25
414	1/2"	GFS401ST038	17,5	13	40,49	57	18,24	46	36	16		M8	5/16"	0,23
414	3/4"	GFS402ST	28,0	19	50,80	71	23,80	55	35	21		M10	3/8"	0,52
414	1"	GFS403ST	34,0	25	57,15	79	27,76	68	41	21		M12	7/16"	0,70
375	1"1/4	GFS404ST	42,8	32	66,68	93	31,75	78	44	25		M14	1/2"	1,08
320	1"1/2	GFS405ST	48,6	38	79,38	112	36,50	94	55	30		M16	5/8"	1,76
250	2"	GFS406ST	61,0	51	96,82	134	44,45	114	65	37		M20	3/4"	2,98
230	2"1/2	GFS507ST	76,6	63	123,80	180	58,70	152	80	48		M24	7/8"	7,00
200	3"	GFS508ST	90,0	73	152,40	208	71,40	178	90	58		M30	1"1/8	11,5

PER QUESTA TIPOLOGIA DI PRODOTTO, VERIFICATE SEMPRE SE LA QUOTA "A" E "B" CORRISPONDE ALLA SCHEDULA DEL VOSTRO TUBO

FOR THIS KIND OF PRODUCT, PLEASE ALWAYS VERIFY IF DIMENSION "A" AND "B" CORRESPOND TO THE SCHEDULE OF YOUR TUBE

La pressione di esercizio massima raccomandata si basa sulla flangia.

La massima pressione di lavoro del sistema è determinata dallo spessore e dal tipo di materiale del tubo utilizzato.

The maximum recommended working pressure is based on the flange.

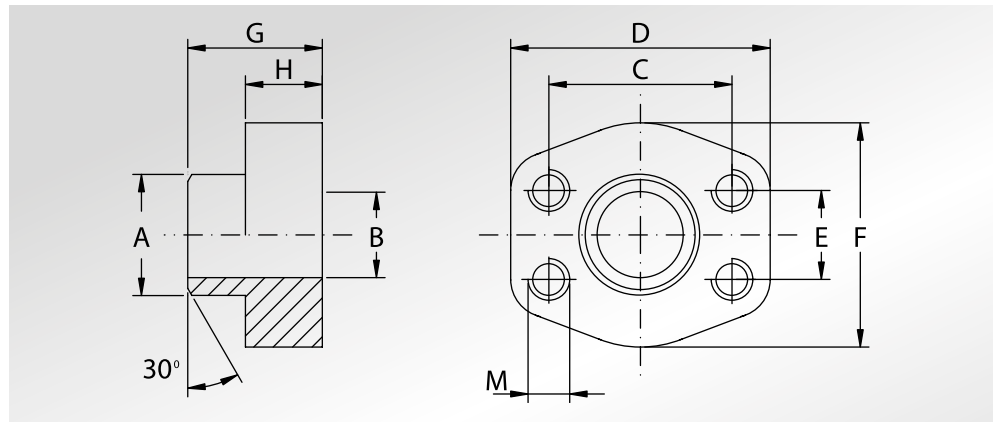
The working pressure of the system is determined by the thickness and the steel quality of the pipe.

DESIGNAZIONE PER ORDINE DESIGNATION FOR ORDER	Materiale / Material	
	S355	AISI 316L
Controflangia con fori di fissaggio filettati metrici Counter-flange with metric threaded fixing holes	GFS...ST	GFX...ST
Controflangia con fori di fissaggio filettati unc Counter-flange with unc threaded fixing holes	GFS...STU	GFX...STU



CONTROFLANGE A SALDARE DI TESTA SCH.160

WELD ON COUNTER-FLANGES SCH.160



Pressione max di esercizio raccomandata Kg/cm ²	Grandezza	Tipo	Dimensioni										Peso Kg	
Maximum recommended working pressure Kg/cm ²	Size	Type	Dimensions										Weight Kg	
			A	B	C	D	E	F	G	H	M			
SERIE 3000													Metric	Unc
345	1/2"	GFS080STB11	21,5	11,8	38,10	57	17,48	46	36	16	M8	5/16"	0,25	
345	3/4"	GFS100STB15	28,0	15,6	47,63	65	22,23	50	36	18	M10	3/8"	0,39	
345	1"	GFS102STB20	34,0	20,7	52,37	70	26,19	55	38	18	M10	3/8"	0,45	
276	1"1/4	GFS104STB29	42,8	29,5	58,72	79	30,18	68	41	21	M10	7/16"	0,69	
207	1"1/2	GFS106STB34	48,6	34	69,85	93	35,71	78	44	25	M12	1/2"	1,05	
207	2"	GFS108STB42	61,0	42,8	77,77	102	42,88	90	45	25	M12	1/2"	1,22	
172	2"1/2	GFS110STB54	77,0	54	88,90	114	50,80	105	50	25	M12	1/2"	1,63	
138	3"	GFS112STB67	92,0	67,7	106,38	134	61,93	124	50	27	M16	5/8"	2,42	
138	4"	GFS116STB87	115,5	87,3	130,18	162	77,77	146	48	27	M16	5/8"	2,94	
138	5"	GFS118STB109	140,2	109,5	152,40	184	92,08	180	50	28	M16	5/8"	5,00	
SERIE 6000														
414	1/2"	GFS401ST012B11	21,5	11,8	40,49	57	18,24	46	36	16	M8	5/16"	0,25	
414	3/4"	GFS402STB15	28,0	15,6	50,80	71	23,80	55	35	21	M10	3/8"	0,52	
414	1"	GFS403STB20	34,0	20,7	57,15	79	27,76	68	42	25	M12	7/16"	0,70	
414	1"1/4	GFS404STB29	42,8	29,5	66,68	93	31,75	78	44	25	M14	1/2"	1,08	
414	1"1/2	GFS405STB34	48,6	34	79,38	112	36,50	94	55	28	M16	5/8"	1,76	
414	2"	GFS406STB42	61,0	42,8	96,82	134	44,45	114	65	37	M20	3/4"	2,98	
350	2"1/2	GFS507STB54	76,6	54	123,80	180	58,70	152	80	48	M24	7/8"	7,50	
350	3"	GFS508STB67	90,0	67,7	152,40	208	71,40	178	90	58	M30	1"1/8	11,85	

PER QUESTA TIPOLOGIA DI PRODOTTO, VERIFICATE SEMPRE SE LA QUOTA "A" E "B" CORRISPONDE ALLA SCHEDULA DEL VOSTRO TUBO

FOR THIS KIND OF PRODUCT, PLEASE ALWAYS VERIFY IF DIMENSION "A" AND "B" CORRESPOND TO THE SCHEDULE OF YOUR TUBE

La pressione di esercizio massima raccomandata si basa sulla flangia.

La massima pressione di lavoro del sistema è determinata dallo spessore e dal tipo di materiale del tubo utilizzato.

The maximum recommended working pressure is based on the flange.

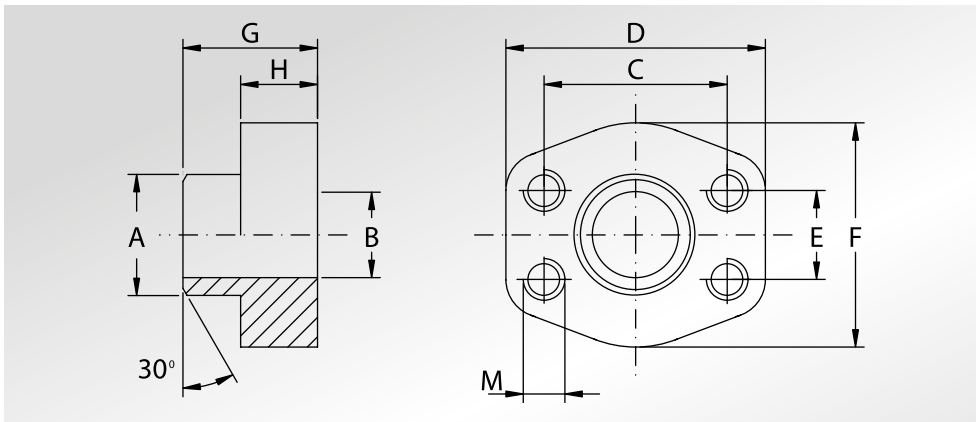
The working pressure of the system is determined by the thickness and the steel quality of the pipe.

DESIGNAZIONE PER ORDINE DESIGNATION FOR ORDER	Materiale / Material	
	S355	AISI 316L
Controflangia con fori di fissaggio filettati metrici Counter-flange with metric threaded fixing holes	GFS...STB	GFX...STB
Controflangia con fori di fissaggio filettati unc Counter-flange with unc threaded fixing holes	GFS...STB...U	GFX...STB...U

**CONTROFLANGE
A SALDARE
DI TESTA SCH.XXS**



**WELD ON
COUNTER-FLANGES
SCH.XXS**



Pressione max di esercizio raccomandata Kg/cm ²	Grandezza	Tipo	Dimensioni									Peso Kg	
Maximum recommended working pressure Kg/cm ²	Size	Type	Dimensions									Weight Kg	
			A	B	C	D	E	F	G	H	M		
SERIE 3000													
											Metric	Unc	
345	1/2"	GFS080STB6	21,5	6,3	38,10	57	17,48	46	36	16	M8	5/16"	0,25
345	3/4"	GFS100STB11	28,0	11,0	47,63	65	22,23	50	36	18	M10	3/8"	0,39
345	1"	GFS102STB15	34,0	15,2	52,37	70	26,19	55	38	18	M10	3/8"	0,45
276	1"1/4	GFS104STB22	42,8	22,8	58,72	79	30,18	68	41	21	M10	7/16"	0,69
207	1"1/2	GFS106STB28	48,6	28,0	69,85	93	35,71	78	44	25	M12	1/2"	1,05
207	2"	GFS108STB38	61,0	38,2	77,77	102	42,88	90	45	25	M12	1/2"	1,22
172	2"1/2	GFS110STB45	77,0	45,0	88,90	114	50,80	105	50	25	M12	1/2"	1,63
138	3"	GFS112STB58	92,0	58,4	106,38	134	61,93	124	50	27	M16	5/8"	2,42
138	4"	GFS116STB80	115,5	80,0	130,18	162	77,77	146	48	27	M16	5/8"	2,94
138	5"	GFS118STB102	140,2	102,9	152,40	184	92,08	180	50	28	M16	5/8"	5,00

SERIE 6000													
414	1/2"	GFS401ST012B6	21,5	6,3	40,49	57	18,24	46	36	16	M8	5/16"	0,25
414	3/4"	GFS402STB11	28,0	11,0	50,80	71	23,80	55	35	21	M10	3/8"	0,52
414	1"	GFS403STB15	34,0	15,2	57,15	79	27,76	68	42	25	M12	7/16"	0,70
414	1"1/4	GFS404STB22	42,8	22,8	66,68	93	31,75	78	44	25	M14	1/2"	1,08
414	1"1/2	GFS405STB28	48,6	28,0	79,38	112	36,50	94	55	28	M16	5/8"	1,76
414	2"	GFS406STB38	61,0	38,2	96,82	134	44,45	114	65	37	M20	3/4"	2,98
414	2"1/2	GFS507STB45	76,6	45,0	123,80	180	58,70	152	80	48	M24	7/8"	7,90
414	3"	GFS508STB58	90,0	58,4	152,40	208	71,40	178	90	58	M30	1"1/8	12,45

PER QUESTA TIPOLOGIA DI PRODOTTO, VERIFICATE SEMPRE SE LA QUOTA "A" E "B" CORRISPONDE ALLA SCHEDULA DEL VOSTRO TUBO

FOR THIS KIND OF PRODUCT, PLEASE ALWAYS VERIFY IF DIMENSION "A" AND "B" CORRESPOND TO THE SCHEDULE OF YOUR TUBE

La pressione di esercizio massima raccomandata si basa sulla flangia.

La massima pressione di lavoro del sistema è determinata dallo spessore e dal tipo di materiale del tubo utilizzato.

The maximum recommended working pressure is based on the flange.

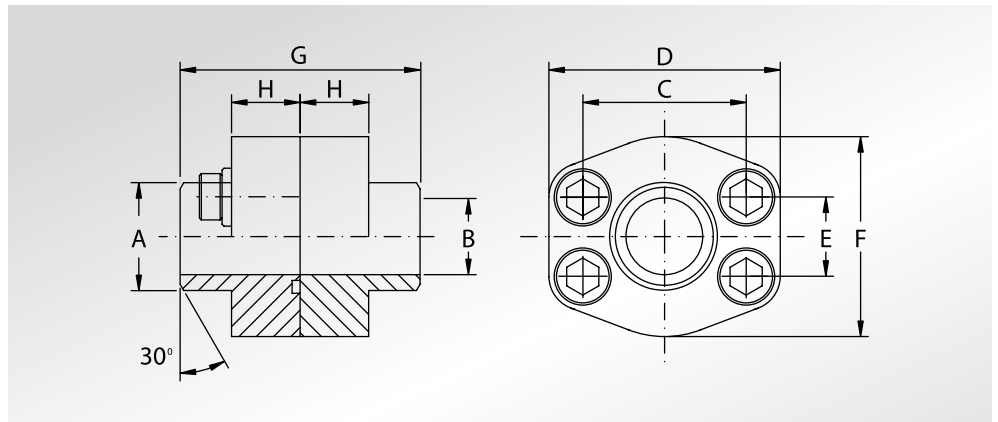
The working pressure of the system is determined by the thickness and the steel quality of the pipe.

DESIGNAZIONE PER ORDINE DESIGNATION FOR ORDER	Materiale / Material	
	S355	AISI 316L
Controflangia con fori di fissaggio filettati metrici Counter-flange with metric threaded fixing holes	GFS...STB	GFX...STB
Controflangia con fori di fissaggio filettati unc 8 Counter-flange with unc threaded fixing holes	GFS...STB...U	GFX...STB...U



**DOPPIE FLANGE
A SALDARE
DI TESTA
SCH.80; SCH.160;
SCH.XXS**

**WELD ON
DOUBLE FLANGES
SCH.80; SCH.160;
SCH.XXS**



Pressione max di esercizio raccomandata Kg/cm ² (Riferito alla SCH80)	Grandezza	Tipo	Dimensioni										Viti		Or tipo	Peso Kg (Riferito alla SCH80)			
			A	B	C	D	E	F	G	H	Metric	Unc							
Maximum recommended working pressure Kg/cm ² (Referred to SCH80)	Size	Type	Dimensions										Screws		Or type	Weight Kg (Referred to SCH80)			
SERIE 3000			SCH.80	SCH.160	SCH.XXS														
345	1/2"	DFS080ST	21,5	13	11,8	6,3	38,10	57	17,48	46	72	32	M8x30	5/16"x1"1/4	4075	0,55			
345	1/2"	DFS080ST038	17,5	13	—	—	38,10	57	17,48	46	72	32	M8x30	5/16"x1"1/4	4075	0,51			
345	3/4"	DFS100ST	28,0	19	15,6	11,0	47,63	65	22,23	50	72	36	M10x35	3/8"x1"1/2	4100	0,86			
345	1"	DFS102ST	34,0	25	20,7	15,2	52,37	70	26,19	55	76	36	M10x35	3/8"x1"1/2	4131	0,98			
276	1"1/4	DFS104ST	42,8	32	29,5	22,8	58,72	79	30,18	68	82	42	M10x40	7/16"x1"3/4	4150	1,47			
207	1"1/2	DFS106ST	48,6	38	34	28,0	69,85	93	35,71	78	88	50	M12x45	1/2"x1"3/4	4187	2,23			
207	2"	DFS108ST	61,0	51	42,8	38,2	77,77	102	42,88	90	90	50	M12x45	1/2"x1"3/4	4225	2,56			
172	2"1/2	DFS110ST	77,0	63	54	45,0	88,90	114	50,80	105	100	50	M12x45	1/2"x1"3/4	4275	3,38			
138	3"	DFS112ST	92,0	73	67,7	58,4	106,38	134	61,93	124	100	54	M16x50	5/8"x2"	4337	5,18			
34	3"1/2	DFS114ST	103,0	89	—	—	120,65	152	69,85	136	96	54	M16x50	5/8"x2"	4387	5,23			
34	4"	DFS116ST	115,5	99	87,3	80,0	130,18	162	77,77	146	96	54	M16x50	5/8"x2"	4437	6,22			
34	5"	DFS118ST	140,2	120	109,5	102,9	152,40	184	92,08	180	100	56	M16x55	5/8"x2"1/4	4537	12,12			
SERIE 6000			SCH.80	SCH.160	SCH.XXS														
414	1/2"	DFS401ST012	21,5	13	11,8	6,3	40,49	57	18,24	46	72	32	M8x30	5/16"x1"1/4	4075	0,55			
414	1/2"	DFS401ST038	17,5	13	—	—	40,49	57	18,24	46	72	32	M8x30	5/16"x1"1/4	4075	0,51			
414	3/4"	DFS402ST	28,0	19	15,6	11,0	50,80	71	23,80	55	70	42	M10x40	3/8"x1"1/2	4100	1,13			
414	1"	DFS403ST	34,0	25	20,7	15,2	57,15	79	27,76	68	82	42**	M12x45	7/16"x1"3/4	4131	1,54			
375	1"1/4	DFS404ST	42,8	32	29,5	22,8	66,68	93	31,75	78	88	50	M14x45	-	4150	2,37			
375	1"1/4	DFS404STL13	42,8	32	29,5	22,8	66,68	93	31,75	78	88	50	M12x45	1/2"x1"3/4	4150	2,37			
320	1"1/2	DFS405ST	48,6	38	34	28,0	79,38	112	36,50	94	110	60***	M16x55	5/8"x2"1/4	4187	3,87			
250	2"	DFS406ST	61,0	51	42,8	38,2	96,82	134	44,45	114	130	74	M20x70	3/4"x2"3/4	4225	6,75			
230	2"1/2	DFS507ST *	76,6	63	54	45,0	123,80	180	58,70	152	160	96	M24x80	7/8"x3"1/4	4275	15,30			
200	3"	DFS508ST *	90,0	73	67,7	58,4	152,40	208	71,40	178	180	116	M30x100	1"1/8"x3"1/2	4337	25,55			

PER QUESTA TIPOLOGIA DI PRODOTTO, VERIFICATE SEMPRE SE LA QUOTA "A" E "B" CORRISPONDE ALLA SCHEDULA DEL VOSTRO TUBO

FOR THIS KIND OF PRODUCT, PLEASE ALWAYS VERIFY IF DIMENSION "A" AND "B" CORRESPOND TO THE SCHEDULE OF YOUR TUBE

La pressione di esercizio massima raccomandata si basa sulla flangia.

La massima pressione di lavoro del sistema è determinata dallo spessore e dal tipo di materiale del tubo utilizzato.

The maximum recommended working pressure is based on the flange.

The working pressure of the system is determined by the thickness and the steel quality of the pipe.

DESIGNAZIONE PER ORDINE DESIGNATION FOR ORDER	Materiale / Material	
	S355	AISI 316L
Flangia + controflangia + set viti metriche Flange + counter-flange + metric screws set	DFS...STM	DFX...STM
Flangia + controflangia + set viti unc Flange + counter-flange + unc screws set	DFS...STU	DFX...STU

NOTE / NOTES

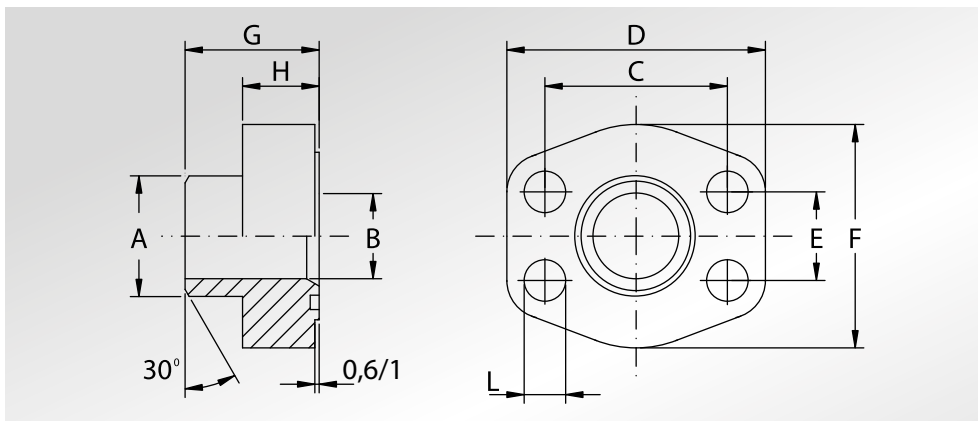
*set viti metriche disponibili solo metriche in acciaio al carbonio

*metric screws set available only metric in carbon steel

**SCH160 e SCHXXS 50 mm

***SCH160 e SCHXXS 56 mm

set viti unc disponibili solo in acciaio al carbonio
unc screws set available only in carbon steel



**FLANGE
A SALDARE DI
TESTA
TUBO METRICO
FORO CILINDRICO**



**METRIC PIPE
CYLINDRIC HOLE
WELD ON FLANGES**

Pressione max di esercizio raccomandata Kg/cm ²	Grandezza	Tipo	Dimensioni								Viti		Or tipo	Peso Kg	
Maximum recommended working pressure Kg/cm ²	Size	Type	Dimensions								Screws		Or type	Weight Kg	
			A	B	C	D	E	F	G	H	L	Metric	Unc		

SERIE 3000

345	3/4"	AFS100SRE25	25	19	47,63	65	22,23	50	36	18	11	M10x35	3/8"x1"1/2	4100	0,35
345	1"	AFS102SRE30	30	22	52,37	70	26,19	55	38	18	11	M10x35	3/8"x1"1/2	4131	0,41
276	1"1/4	AFS104SRE38	38	30	58,72	79	30,18	68	41	21	11,5	M10x40	7/16"x1"3/4	4150	0,64
207	1"1/2	AFS106SRE42	42	36	69,85	93	35,71	78	44,5	24,5	13,5	M12x45	1/2"x1"3/4	4187	0,98
207	1"1/2	AFS106SRE48	49	38	69,85	93	35,71	78	44,5	24,5	13,5	M12x45	1/2"x1"3/4	4187	0,98
207	2"	AFS108SRE48	49	42	77,77	102	42,88	90	45	25	13,5	M12x45	1/2"x1"3/4	4225	1,14
207	2"	AFS108SRE60	61	49	77,77	102	42,88	90	45	25	13,5	M12x45	1/2"x1"3/4	4225	1,14
172	2"1/2	AFS110SRE76	77	62	88,90	114	50,80	105	50	25	13,5	M12x45	1/2"x1"3/4	4275	1,55
138	3"	AFS112SRE76	77	70	106,38	134	61,93	124	51	26	17,5	M16x50	5/8"x2"	4337	2,33
138	3"	AFS112SRE76	77	62	106,38	134	61,93	124	51	26	17,5	M16x50	5/8"x2"	4337	2,33
34	3"1/2	AFS114SRE76	77	70	120,65	152	69,85	136	48	26	17,5	M16x50	5/8"x2"	4387	2,40
34	3"1/2	AFS114SRE88	90	82	120,65	152	69,85	136	48	26	17,5	M16x50	5/8"x2"	4387	2,40
34	4"	AFS116SRE76	77	70	130,18	162	77,77	146	48	26	17,5	M16x50	5/8"x2"	4437	2,85
34	4"	AFS116SRE88	90	82	130,18	162	77,77	146	48	26	17,5	M16x50	5/8"x2"	4437	2,85

SERIE 6000

345	1/2"	AFS401SRE20	20	14	40,49	57	18,24	46	34	16	9	M8x30	5/16"x1"1/4	4075	0,24
345	3/4"	AFS402SRE20	20	14	50,80	71	23,80	55	35	21	11	M10x40	3/8"x1"1/2	4100	0,48
345	3/4"	AFS402SRE25	25	17	50,80	71	23,80	55	35	21	11	M10x40	3/8"x1"1/2	4100	0,48
345	1"	AFS403SRE25	25	19	57,15	81	27,76	65	42	25	13	M12x45	7/16"x1"3/4	4131	0,64
345	1"	AFS403SRE30	30	22	57,15	81	27,76	65	42	25	13	M12x45	7/16"x1"3/4	4131	0,64
276	1"1/4	AFS404SRE38	38	28	66,68	95	31,75	78	44	25	15	M14x45	-	4150	1,00
276	1"1/4	AFS404SRE38 L13	38	28	66,68	95	31,75	78	44	25	13,5	M12x45	1/2"x1"3/4	4150	1,00
276	1"1/4	AFS404SRE38B26	38	26	66,68	95	31,75	78	44	25	15	M14x45	-	4150	1,00
276	1"1/4	AFS404SRE38B26 L13	38	26	66,68	95	31,75	78	44	25	13,5	M12x45	1/2"x1"3/4	4150	1,00
276	1"1/2	AFS405SRE38	38	28	79,38	112	36,50	94	56	28	17	M16x55	5/8"x2"1/4	4187	1,69
414	1"1/2	AFS405SRE48	48,6	32	79,38	112	36,50	94	56	28	17	M16x55	5/8"x2"1/4	4187	1,69
414	2"	AFS406SRE60	61	40	96,82	134	44,45	114	65	37	21	M20x70	3/4"x2"3/4	4225	2,86
414	2"1/2	AFS507SRE76 *	76,6	50	123,80	180	58,70	152	80	48	26	M24x80	7/8"x3"1/4	4275	6,40

La pressione di esercizio massima raccomandata si basa sulla flangia.
La massima pressione di lavoro del sistema è determinata dallo spessore e dal tipo di materiale del tubo utilizzato.

*The maximum recommended working pressure is based on the flange.
The working pressure of the system is determined by the thickness and the steel quality of the pipe.*

DESIGNAZIONE PER ORDINE DESIGNATION FOR ORDER	Materiale / Material	
	S355	AISI 316L
Solo flangia Only flange	AFS...SRE/STRE	AFX...SRE/STRE
Flangia completa di viti metriche, grower e o-ring Flange complete of metric screws, grower type washers and o-ring	AFS...SRE...M/STRE...M AFX...SRE...M/STRE...M	
Flangia completa di viti unc, grower e o-ring Flange complete of unc screws, grower type washers and o-ring	AFS...SRE...U/STRE...U AFX...SRE...U/STRE...U	

NOTE / NOTES

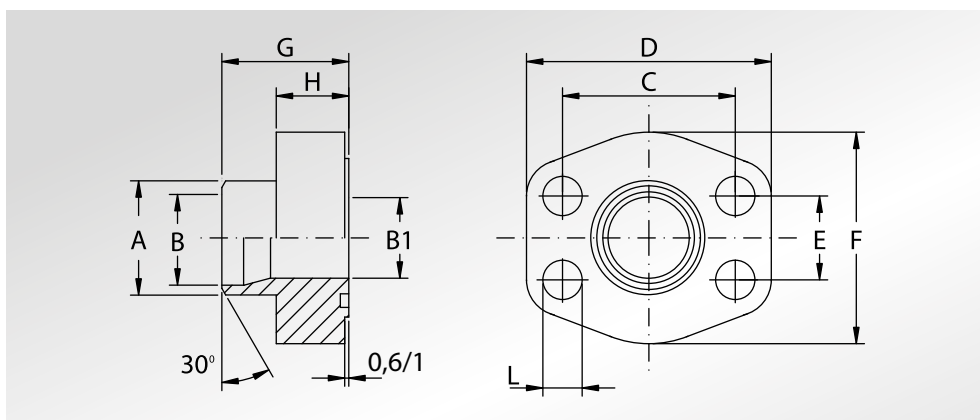
set viti unc disponibili solo in acciaio al carbonio
unc screws set available only in carbon steel

*set viti disponibili solo metriche in acciaio al carbonio
*screws set available only metric in carbon steel



FLANGE A SALDARE DI TESTA TUBO METRICO

METRIC PIPE WELD ON FLANGES



Pressione max di esercizio raccomandata Kg/cm ²	Grandezza	Tipo	Dimensioni										Viti		Or tipo	Peso Kg
Maximum recommended working pressure Kg/cm ²	Size	Type	Dimensions										Screws		Or type	Weight Kg
			A	B	B1	C	D	E	F	G	H	L	Metric	Unc		

SERIE 3000

345	1/2"	AFS080SRE20	20	14	13	38,10	57	17,48	46	35	16	9	M8x30	5/16"x1"1/4	4075	0,24
345	1/2"	AFS080SRE22	22	16	13	38,10	57	17,48	46	35	16	9	M8x30	5/16"x1"1/4	4075	0,24
345	3/4"	AFS100SRE28	28	21,5	19	47,63	65	22,23	50	36	18	11	M10x35	3/8"x1"1/2	4100	0,35
345	1"	AFS102SRE35	35	27	25	52,37	70	26,19	55	38	18	11	M10x35	3/8"x1"1/2	4131	0,46
276	1"1/4	AFS104SRE42	43	36	31	58,72	79	30,18	68	41	21	11,5	M10x40	7/16"x1"3/4	4150	0,64
207	1"1/2	AFS106STRE48	49	42	38	69,85	93	35,71	78	44,5	24,5	13,5	M12x45	1/2"x1"3/4	4187	0,98
207	2"	AFS108STRE60	61	53	49	77,77	102	42,88	90	45	25	13,5	M12x45	1/2"x1"3/4	4225	1,14
172	2"1/2	AFS110STRE76	77	70	62	88,90	114	50,80	105	50	25	13,5	M12x45	1/2"x1"3/4	4275	1,55
138	3"	AFS112STRE88	90	82	74	106,38	134	61,93	124	51	26	17,5	M16x50	5/8"x2"	4337	2,33
34	4"	AFS116STRE114	115	107	102	130,18	162	77,77	146	48	26	17,5	M16x50	5/8"x2"	4437	2,85
34	5"	AFS118STREH139	140,2	131	120	152,40	184	92,08	180	50	28	17,5	M16x55	5/8"x2"1/4	4537	4,00

SERIE 6000

414	1"1/2	AFS405SRE60	61	40	38	79,38	112	36,50	94	56	28	17	M16x55	5/8"x2"1/4	4187	1,65
-----	-------	-------------	----	----	----	-------	-----	-------	----	----	----	----	--------	------------	------	------

La pressione di esercizio massima raccomandata si basa sulla flangia.

La massima pressione di lavoro del sistema è determinata dallo spessore e dal tipo di materiale del tubo utilizzato.

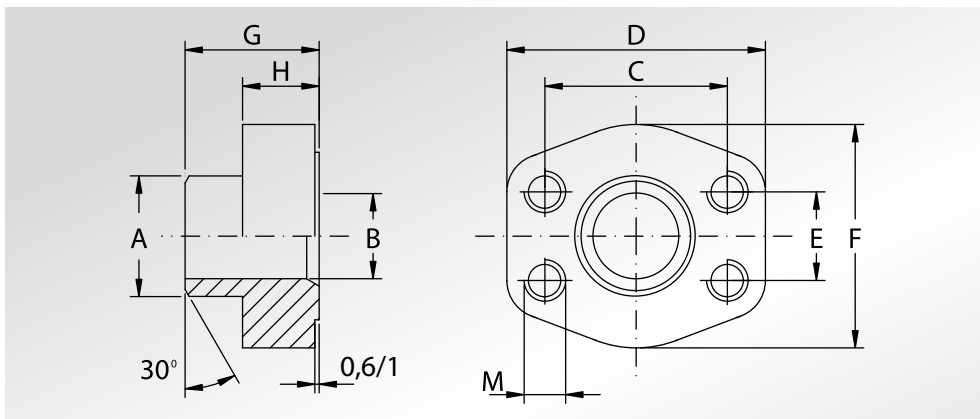
The maximum recommended working pressure is based on the flange.

The working pressure of the system is determined by the thickness and the steel quality of the pipe.

DESIGNAZIONE PER ORDINE DESIGNATION FOR ORDER	Materiale / Material	
	S355	AISI 316L
Solo flangia Only flange	AFS...SRE/STRE	AFX...SRE/STRE
Flangia completa di viti metriche, grower e o-ring Flange complete of metric screws, grower type washers and o-ring	AFS...SRE...M/STRE...M	AFX...SRE...M/STRE...M
Flangia completa di viti unc, grower e o-ring Flange complete of unc screws, grower type washers and o-ring	AFS...SRE...U/STRE...U	AFX...SRE...U/STRE...U

NOTE / NOTES

set viti unc disponibili solo in acciaio al carbonio
unc screws set available only in carbon steel



**CONTROFLANGE
A SALDARE
DI TESTA
TUBO METRICO
FORO CILINDRICO**



**METRIC PIPE
CYLINDRIC
HOLE WELD ON
COUNTER-FLANGES**

Pressione max di esercizio raccomandata Kg/cm ²	Grandezza	Tipo	Dimensioni										Peso Kg
			Dimensions										
Maximum recommended working pressure Kg/cm ²	Size	Type	A	B	C	D	E	F	G	H	M		Weight Kg
SERIE 3000													
											Metric	Unc	
345	3/4"	GFS100SRE25	25	19	47,63	65	22,23	50	36	18	M10	3/8"	0,39
345	1"	GFS102SRE30	30	22	52,37	70	26,19	55	38	18	M10	3/8"	0,45
276	1"1/4	GFS104SRE38	38	30	58,72	79	30,18	68	41	21	M10	7/16"	0,69
207	1"1/2	GFS106SRE42	42	36	69,85	93	35,71	78	44,5	24,5	M12	1/2"	1,05
207	1"1/2	GFS106SRE48	49	38	69,85	93	35,71	78	44,5	24,5	M12	1/2"	1,05
207	2"	GFS108SRE48	49	42	77,77	102	42,88	90	45	25	M12	1/2"	1,22
207	2"	GFS108SRE60	61	49	77,77	102	42,88	90	45	25	M12	1/2"	1,22
172	2"1/2	GFS110SRE76	77	62	88,90	114	50,80	105	50	25	M12	1/2"	1,63
138	3"	GFS112SRE76	77	70	106,38	134	61,93	124	51	26	M16	5/8"	2,33
138	3"	GFS112SRE76	77	62	106,38	134	61,93	124	51	26	M16	5/8"	2,33
34	3"1/2	GFS114SRE76	77	70	120,65	152	69,85	136	48	26	M16	5/8"	2,49
34	3"1/2	GFS114SRE88	90	82	120,65	152	69,85	136	48	26	M16	5/8"	2,49
34	4"	GFS116SRE76	77	70	130,18	162	77,77	146	48	26	M16	5/8"	2,85
34	4"	GFS116SRE88	90	82	130,18	162	77,77	146	48	26	M16	5/8"	2,85
SERIE 6000													
345	1/2"	GFS401SRE20	20	14	40,49	57	18,24	46	34	16	M8	5/16"	0,25
345	3/4"	GFS402SRE20	20	14	50,80	71	23,80	55	35	21	M10	3/8"	0,52
345	3/4"	GFS402SRE25	25	17	50,80	71	23,80	55	35	21	M10	3/8"	0,52
345	1"	GFS403SRE25	25	19	57,15	81	27,76	65	42	25	M12	7/16"	0,70
345	1"	GFS403SRE30	30	22	57,15	81	27,76	65	42	25	M12	7/16"	0,70
276	1"1/4	GFS404SRE38	38	28	66,68	95	31,75	78	44	25	M14	1/2"	1,08
276	1"1/4	GFS404SRE38B26	38	26	66,68	95	31,75	78	44	25	M14	1/2"	1,08
276	1"1/2	GFS405SRE38	38	28	79,38	112	36,50	94	56	28	M16	5/8"	1,76
414	1"1/2	GFS405SRE48	48,6	32	79,38	112	36,50	94	56	28	M16	5/8"	1,76
414	2"	GFS406SRE60	61	40	96,82	134	44,45	114	65	37	M20	3/4"	2,98
414	2"1/2	GFS507SRE76	76,6	50	123,80	180	58,70	152	80	48	M24	7/8"	6,50

La pressione di esercizio massima raccomandata si basa sulla flangia.
La massima pressione di lavoro del sistema è determinata dallo spessore e dal tipo di materiale del tubo utilizzato.

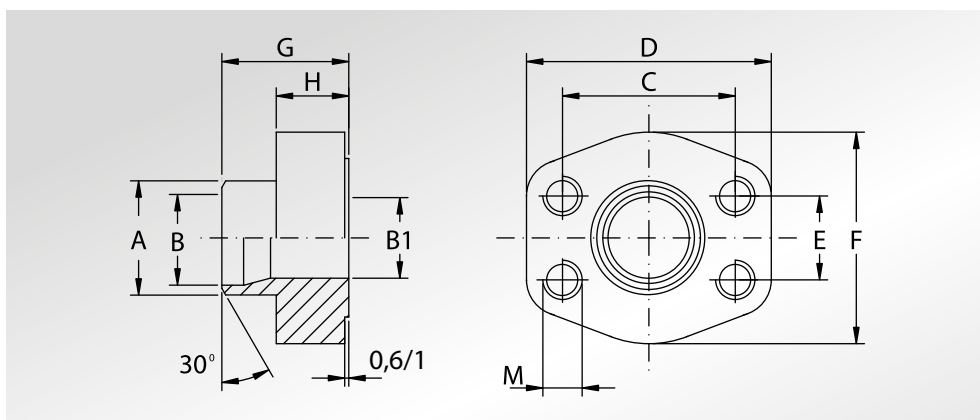
The maximum recommended working pressure is based on the flange.
The working pressure of the system is determined by the thickness and the steel quality of the pipe.

DESIGNAZIONE PER ORDINE DESIGNATION FOR ORDER	Materiale / Material	
	S355	AISI 316L
Controflangia con fori di fissaggio filettati metrici Counter-flange with metric threaded fixing holes	GFS...SRE / STRE	GFX...SRE / STRE
Controflangia con fori di fissaggio filettati unc Counter-flange with unc threaded fixing holes	GFS...SREU / STREU	GFX...SREU / STREU



CONTROFLANGE A SALDARE DI TESTA TUBO METRICO

METRIC PIPE WELD ON COUNTER-FLANGES



Pressione max di esercizio raccomandata Kg/cm ²	Grandezza	Tipo	Dimensioni											Peso Kg
			Dimensions											
Maximum recommended working pressure Kg/cm ²	Size	Type	A	B	B1	C	D	E	F	G	H	M		Weight Kg
SERIE 3000														
345	1/2"	GFS080SRE20	20	14	13	38,10	57	17,48	46	35	16	M8	5/16"	0,25
345	1/2"	GFS080SRE22	22	16	13	38,10	57	17,48	46	35	16	M8	5/16"	0,25
345	3/4"	GFS100SRE28	28	21,5	19	47,63	65	22,23	50	36	18	M10	3/8"	0,39
345	1"	GFS102SRE35	35	27	25	52,37	70	26,19	55	38	18	M10	3/8"	0,45
276	1"1/4	GFS104SRE42	43	36	31	58,72	79	30,18	68	41	21	M10	7/16"	0,69
207	1"1/2	GFS106STRE48	49	42	38	69,85	93	35,71	78	44,5	24,5	M12	1/2"	1,05
207	2"	GFS108STRE60	61	53	49	77,77	102	42,88	90	45	25	M12	1/2"	1,22
172	2"1/2	GFS110STRE76	77	70	62	88,90	114	50,80	105	50	25	M12	1/2"	1,63
138	3"	GFS112STRE88	90	82	74	106,38	134	61,93	124	51	26	M16	5/8"	2,42
34	4"	GFS116STRE114	115	107	102	130,18	162	77,77	146	48	26	M16	5/8"	2,94
34	5"	GFS118STREH139	140,2	131	120	152,40	184	92,08	180	50	28	M16	5/8"	4,00
SERIE 6000														
414	1"1/2	GFS405SRE60	61	40	38	79,38	112	36,50	94	56	28	M16	5/16"	1,76

La pressione di esercizio massima raccomandata si basa sulla flangia.

La massima pressione di lavoro del sistema è determinata dallo spessore e dal tipo di materiale del tubo utilizzato.

The maximum recommended working pressure is based on the flange.

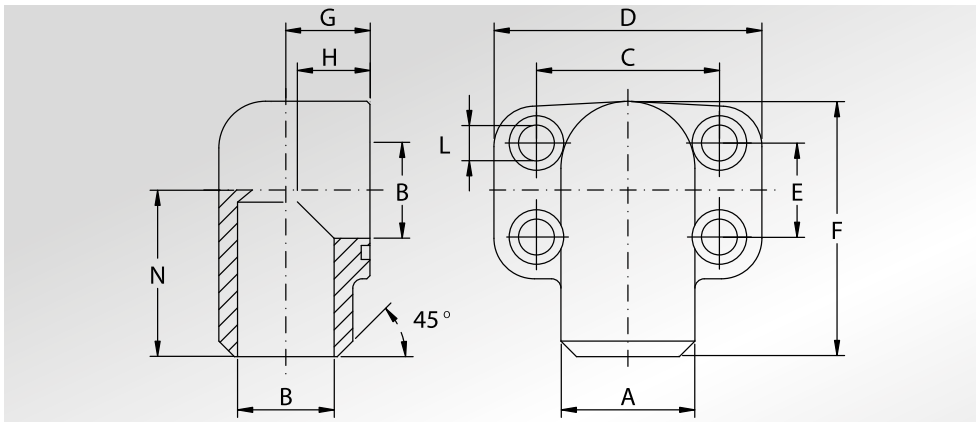
The working pressure of the system is determined by the thickness and the steel quality of the pipe.

DESIGNAZIONE PER ORDINE DESIGNATION FOR ORDER	Materiale / Material	
	S355	AISI 316L
Controflangia con fori di fissaggio filettati metrici Counter-flange with metric threaded fixing holes	GFS...SRE / STRE	GFX...SRE / STRE
Controflangia con fori di fissaggio filettati unc Counter-flange with unc threaded fixing holes	GFS...SREU / STREU	GFX...SREU / STREU

**FLANGE A 90°
A SALDARE
DI TESTA**



**WELD ON
90° FLANGES**



Pressione max di esercizio raccomandata Kg/cm ²	Grandezza	Tipo	Dimensioni										Viti		Or tipo	Peso Kg
Maximum recommended working pressure Kg/cm ²	Size	Type	Dimensions										Screws		Or type	Weight Kg
			A	B	C	D	E	F	G	H	L	N	Metric	Unc		

SERIE 3000

345	3/4"	AFS20090ST	27,2	19	47,63	70	22,23	63	23	21	11	41	M10x40	-	3100	0,65
345	3/4"	AFS20090ST4100	27,2	19	47,63	70	22,23	63	23	21	11	41	M10x40	-	4100	0,65
345	1"	AFS20290ST	34,5	23	52,37	75	26,19	72	25	24	11	48	M10x40	-	4112	0,85
345	1"	AFS20290ST4131	34,5	23	52,37	75	26,19	72	25	24	11	48	M10x40	-	4131	0,85
276	1"1/4	AFS20490ST	43,0	31	58,72	86	30,18	82	27	25	11,5	54	M10x45	-	4150	1,15
207	1"1/2	AFS20690ST	50,0	35	69,85	97	35,71	92	31,5	29	14,0	57	M12x60	-	4187	1,85
207	2"	AFS20890ST	65,0	48	77,77	100	42,88	99	37,5	50	14,0	63	M12x70	-	4225	2,15
172	2"1/2	AFS21090ST *	77	63	88,9	120	50,8	120	50	89	13,5	72,5	M12x100	-	4275	5,7

SERIE 6000

414	3/4"	AFS70090ST	28,0	19	50,80	71	23,80	70	22	19	11	40	M10x35	3/8"x1"1/2	4100	0,50
414	1"	AFS70290ST	34,0	25	57,15	81	27,76	82	27	24	13	47	M12x45	7/16"x1"3/4	4131	0,80
375	1"1/4	AFS70490ST	42,0	32	66,68	95	31,75	95	32	27	15	56	M14x45	1/2"x1"3/4	4150	1,20
375	1"1/4	AFS70490STL13	42,0	32	66,68	95	31,75	95	32	27	13,5	56	M14x45	1/2"x1"3/4	4150	1,20
320	1"1/2	AFS70690ST	48,0	38	79,38	113	36,50	115	40	30	17	68	M16x55	5/8"x2"1/4	4187	1,95

La pressione di esercizio massima raccomandata si basa sulla flangia.
La massima pressione di lavoro del sistema è determinata dallo spessore e dal tipo di materiale del tubo utilizzato.

*The maximum recommended working pressure is based on the flange.
The working pressure of the system is determined by the thickness and the steel quality of the pipe.*

DESIGNAZIONE PER ORDINE DESIGNATION FOR ORDER	Materiale / Material S355
Solo flangia Only flange	AFS...90ST
Flangia completa di viti metriche, grower e o-ring Flange complete of metric screws, grower type washers and o-ring	AFS...90STM
Flangia completa di viti unc, grower e o-ring Flange complete of unc screws, grower type washers and o-ring	AFS...90STU

NOTE / NOTES

* Ricavata da barra, viteria non disponibile
* Obtained from bar, screws not available

set viti unc disponibili solo in acciaio al carbonio
unc screws set available only in carbon steel

LubeTeam Hydraulic S.r.l.

Administration and Headquarter:

Via Tufara Scautieri, 6

83018 - San Martino Valle Caudina (AV)

Office and Warehouse:

S.S. 7 Appia, Km. 237,00

82011 - Airola BN

ITALY

Tel. +39 0823 950 994

Fax +39 0823 412 546

www.lubeteam.it info@lubeteam.it

Italian VAT / C.F. e P.IVA: 01251720627

Follow us



This document is the property of LubeTeam Hydraulic S.r.l. All data reported here are for the exclusive use of the Receiver. Reproduction is not authorized without writing permission, in all or in part of the content of this document, in accordance to Law 633 art. 171, dated April 22, 1941.

Il presente documento è di proprietà della LubeTeam Hydraulic S.r.l. I dati riportati sono per esclusivo del destinatario. La riproduzione, di tutto o in parte, non è autorizzata senza permesso scritto secondo l'art. 171 della L. 633 del 22 Aprile 1941.