

STUCCHI

NEW - Piastra Multiconnessione BM2



 HYDRAULIC
COMPONENTS
& FLUID CONTAMINATION
CONTROL



All trademarks belong to their respective owners; third party trademarks, product names, trade names, corporate names and company names mentioned may be trademarks of their respective owners or registered trademarks of other companies and are used for instructional purposes and for the benefit of the owner, without any end of Copyright infringement in force.

Tutti i marchi riportati appartengono ai legittimi proprietari; marchi di terzi, nomi di prodotti, nomi commerciali, nomi corporativi e società citati possono essere di proprietà dei rispettivi titolari o registrati da altre società e sono stati utilizzati a puro scopo esplicativo e a beneficio del possessore, senza alcun fine di violazione dei diritti di Copyright vigenti.



FAP9 (A)	FAP13 (B)	FAP15 (C)	FAP17 (D)	FAP21 (E)	FAP30 (G)	EC
3/8"	1/2"	5/8"	3/4"	1"	1-1/2"	instead of DN9 or DN13
1 D					1 - special	1

Technical specifications and options



Interchange
Stucchi profile



Sealing
Nitrile NBR



Available sizes
1-1/2



Material
Aluminium, Carbon steel



Valving style
Flat face



Connection Under Pressure
Allowed with Easy CUP



Operating pressure
up to 420 bar



Locking mechanism
Pin, Cam



Temperature
-20°C / +100°C



Connection system
Lever



Available threads
NPT, SAE



Flow rate
up to 750l/min

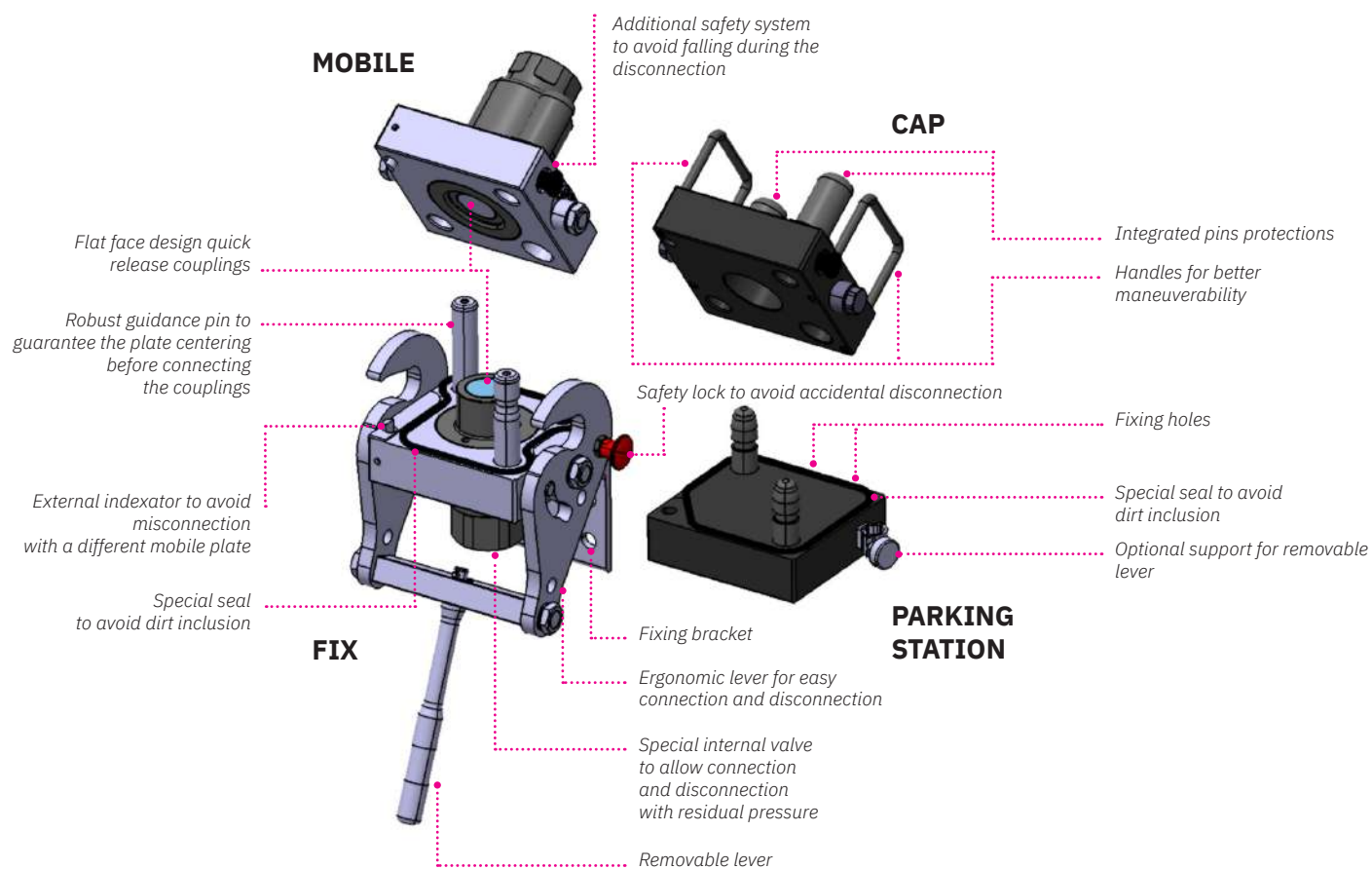
Benefits

- Specific design for hydraulic lines above 1": the lever/cam system minimizes the force required to connect the couplings, even with significant pressure trapped in the circuit and under difficult conditions (environment, access, etc.).
- The locking mechanism ensures a full connection and prevents any accidental disconnection.
- Specific indexator avoids misconnection with different mobile plate.
- Designed to be used with hydraulic oil for fluid power application.
- Safety system on the mobile plate avoids accidental falling during the disconnection.
- Special rubber seal prevents dirt inclusion.
- Additional service line, can be used with optional electrical connector or one drain line FAP9 (3/8).
- Robust guidance pins guarantees the correct alignment before the connection.
- Parking station and cover plates protect the system from contamination and damage as well as to provide a convenient storage solution.
- The removable handle (that can be parked in the optional support on the parking station) increases usability reducing the overall dimension.
- Flat face couplings are easy to clean, reducing the inclusion of contamination to the hydraulic circuit
- Internal valve design creates minimal pressure drop, maintaining circuit efficiency in the system.
- Minimal fluid loss during disconnection, reducing fluid loss to the environment.
- Minimal air inclusion during connection/disconnection.
- High resistance at impulse pressures.
- Safe and simple to use.

Main applications



Features



Performances (with FAP30)

Size	Series	Max. flow suggested		Spillage*	Max. operating pressure					
					Coupled		Coupled		Coupled	
Inch		l/min	GPM	ml	MPa	psi	MPa	psi	MPa	psi
1-1/2	FAP30AS2	750	198,75	0,2	42	6000	42	6000	27	3915

* Spillage is an indicative value of the fluid loss per couple-uncouple cycle.
FAP9 line is only for drain line (max working pressure 1 MPa).

Temperature range: Standard seals NBR, PUR, POM from -20 °C to +100 °C (from -4 °F to +212 °F).

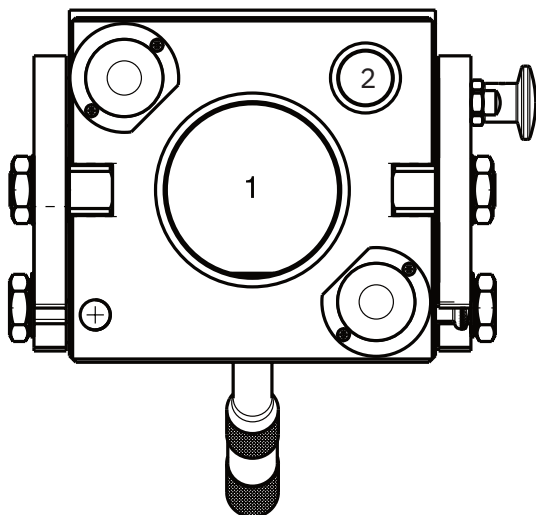
Tests: The couplings have been tested at max. operating pressure for 500.000 impulses in accordance with ISO norm.

Different threads available upon request.

Installation, use and maintenance

- Install the fixed multiconnection with the proper fixing holes, by referring to the drawing shown in the datasheet.
- Install the flexible hoses on the coupling of the fixed and mobile multiconnection, by screwing them with proper torque.
- Clean the mating surface of the parts prior to connect.
- Insert and lock the removable lever in the corresponding hole on the lever system of the fixed multiconnection.
- Put the lever of the fixed multiconnection in complete open position, by unlocking the locking button and rotate the lever until the button is again engaged in the open position.
- Connect the mobile multiconnection by engaging the guiding pins into the fixed multiconnection
- Disengage the button of the safety lock then connect the multiconnection by rotating the lever until the stroke is complete and the locking button engaged again in the closed position.
- Disconnect the lever from the fixed part in order to avoid injuries from fall or lose it. Park it in the proper (optional) support.
- To disconnect, insert the lever and disengage the locking button then rotate by doing vice versa the sequence above described.
- Then disengage the safety “anti-fall” locking system by pulling the knob on the mobile and separate the mobile multiconnection.
- After disconnection, clean the parts and apply the cap on the fixed part then connect the mobile part in the parking station to protect from dust and dirt.
- Disconnect and put the lever in the support.
- Clean frequently the multiconnection and the components.
- If needed, lubricate the connection and guiding parts.
- Check often the multiconnection by looking for leakage, damage or malfunctioning.

Configurations



Possible configurations

Position	Coupling Size	Predisposition for electrical connector
1	FAP30	-
2	FAP9	YES

Kits and spare parts

Multicoupling (couplings included)

Code	Name	Description
870017108	MULTI FIX BM2 1G Provided with removable lever	1 FAP30 1-1/2 NPT
870017208	MULTI MOBILE BM2 1G	1 FAP30 1-1/2 NPT
870017110	MULTI FIX BM2 1G Provided with removable lever	1 FAP30 1-1/2 SAE
870017210	MULTI MOBILE BM2 1G	1 FAP30 1-1/2 SAE

Multicoupling spare parts (couplings not included)

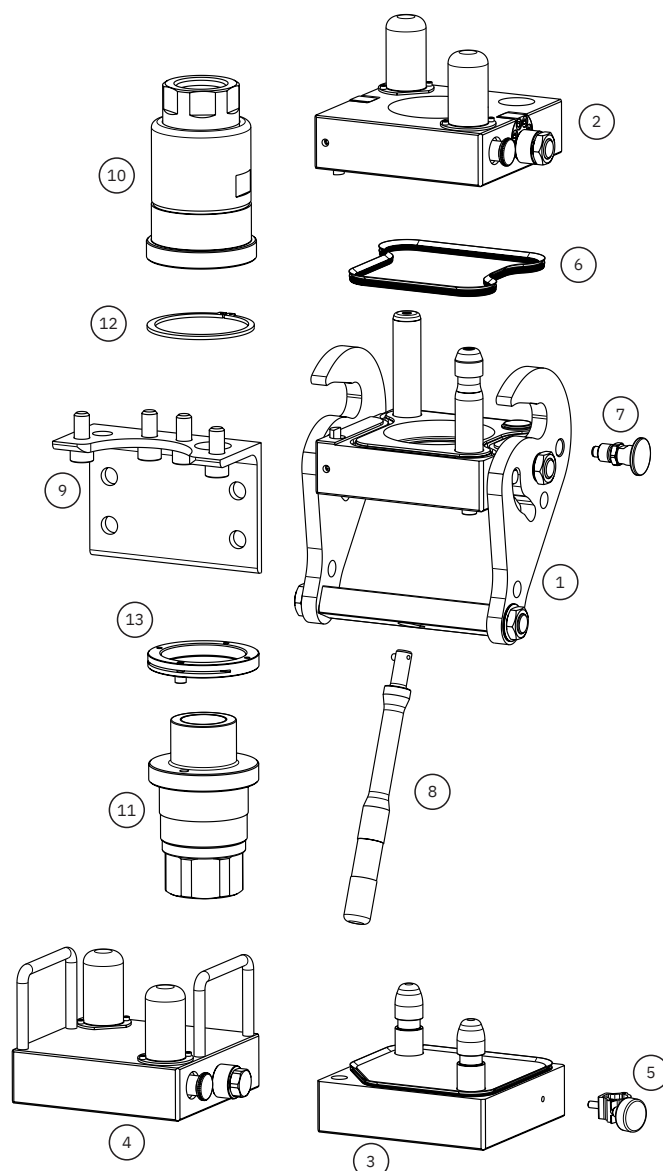
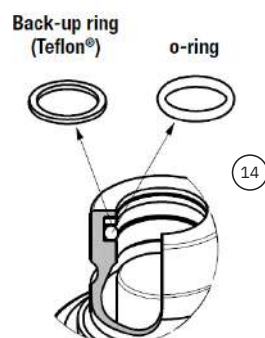
Code	Name	Key
806000422	MULTI FIX EMPTY BM2 1A-1G-1EC Removable lever not included, to be ordered separately	1
806000423	MULTI MOBILE EMPTY BM2 1A-1G-1EC	2
815606317	PARKING STATION BM 170X160	3
815606318	CAP FIX MULTI BM 170X160	4
815524016	SUPPORT FOR LEVER BM	5
815701279	KIT NR.1 EXTERNAL SEAL BM2	6
815701280	KIT NR.1 SAFETY BUTTON BM	7
815701281	KIT REMOVABLE LEVER BM	8
815701282	KIT BRACKET BM2	9

Couplings spare parts

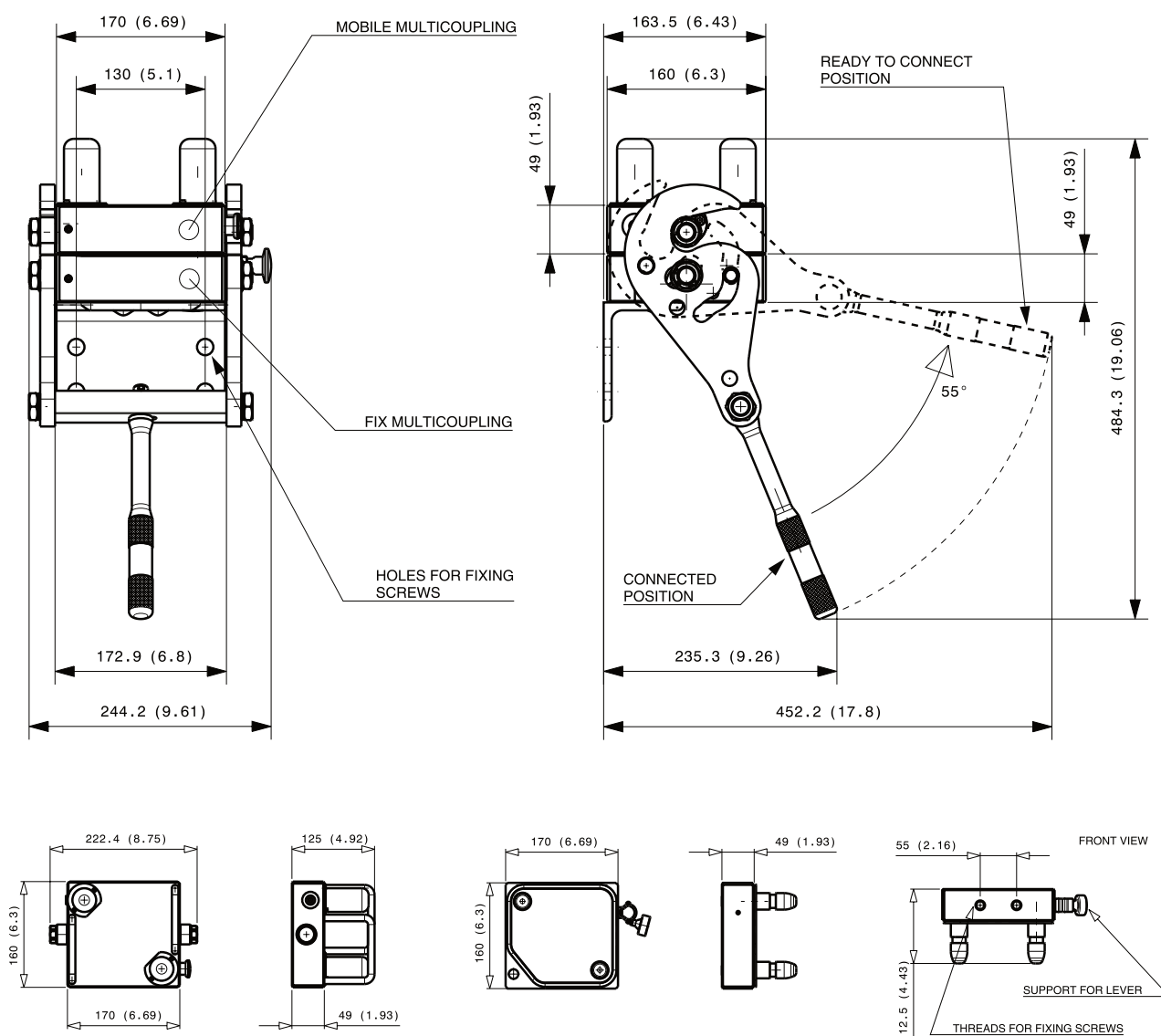
Code	Name	Key
807101006*	F FAP30AS2 1-1/2 NPT	10
807101007**	M FAP30AS2 1-1/2 NPT	11
815701156	KIT SEEGER RING F FAP30AS2	12
815701157	KIT LOCKING SLEEVE M FAP30AS2	13
815701171	KIT OR+BK M FAP30AS2	14

* Seeger ring is not included in the female coupling; seeger ring to be ordered separately.

** Male locking sleeve and screw are not included in the female coupling; kit to be ordered separately.



Fixed and mobile multicoupling



⚠ WARNINGS

A defect, a wrong choice or an improper use of products, can cause injury to persons, animals and objects.
 Connect under pressure products are suitable to be connected under residual (static) pressure.
 Never connect or disconnect with dynamic pressure (e.g. pump on).
 Do not use the female coupling disconnected with high impulse pressure.
 Do not couple-uncouple with flow in the circuit.
 Do not couple-uncouple when the temperature inside of the circuit is higher than 80 °C (176 °F).
 Check the maximum allowable working pressure of the port in use.
 It is important to limit contamination in the circuit to avoid compromising the function of the internal valves.
 Make sure that the medium used is compatible with seal and material as indicated for each series.
 Do not force the lever without pushing the red safety button.
 Do not use extensions or other tools to ease the rotating of the lever.
 Do not connect the fixed half with the mobile half if dirt or tools are between them.
 Pay attention during the connection not to put finger between the plates.
 We advise to assemble the multicoupling with the female face down in order to allow water or moisture to be drained easily.
 Do not exceed single coupling performance and total multicoupling resistance of the multicoupling (please refer to dedicated datasheet).
 Do not pressurize the "auxiliary line with FAP9-3/8" line as this line has to be used for drain line only.
 When the multicoupling is disconnected, it is suggested to use the protection cover for the fixed half and the parking station for the mobile half.
 Do not to modify, disassemble or damage the multicoupling, part of it or coupling/electrical connector, the lever or safety lock system.
 Stucchi Multicoupling BM2 is intended to be used for hydraulic oil applications: do not use the products for dangerous, inflammable or explosive fluids.
 The quick coupling FAP-AS series is intended to be used only on Stucchi Multicouplings BM2. Do not use the FAP-AS coupling on a custom-made multicoupling or other device different than a Stucchi Multicoupling.
 In case of doubt please contact Stucchi Technical Support.
 It is MANDATORY to read and closely follow the instructions. Last updated version always applies at time of installation, see latest Instructions and warnings section on Stucchi website before selecting or using Stucchi products.

LubeTeam Hydraulic S.r.l.

Administration and Headquarter:

Via Tufara Scautieri, 6

83018 - San Martino Valle Caudina (AV)

Office and Warehouse:

S.S. 7 Appia, Km. 237,00

82011 - Airola BN

ITALY

Tel. +39 0823 950 994

Fax +39 0823 412 546

www.lubeteam.it info@lubeteam.it

Italian VAT / C.F. e P.IVA: 01251720627

Follow us



This document is the property of LubeTeam Hydraulic S.r.l. All data reported here are for the exclusive use of the Receiver. Reproduction is not authorized without writing permission, in all or in part of the content of this document, in accordance to Law 633 art. 171, dated April 22, 1941.

Il presente documento è di proprietà della LubeTeam Hydraulic S.r.l. I dati riportati sono per esclusivo del destinatario. La riproduzione, di tutto o in parte, non è autorizzata senza permesso scritto secondo l' art. 171 della L. 633 del 22 Aprile 1941.