



**Fittings for Very High Pressure
in Heavy Duty Applications**

Lok-IT



 HYDRAULIC
COMPONENTS
& FLUID CONTAMINATION
CONTROL



All trademarks belong to their respective owners; third party trademarks, product names, trade names, corporate names and company names mentioned may be trademarks of their respective owners or registered trademarks of other companies and are used for instructional purposes and for the benefit of the owner, without any end of Copyright infringement in force.

Tutti i marchi riportati appartengono ai legittimi proprietari; marchi di terzi, nomi di prodotti, nomi commerciali, nomi corporativi e società citati possono essere di proprietà dei rispettivi titolari o registrati da altre società e sono stati utilizzati a puro scopo esplicativo e a beneficio del possessore, senza alcun fine di violazione dei diritti di Copyright vigenti.

Lok-IT: THE RANGE



WORKING PRESSURE CHART

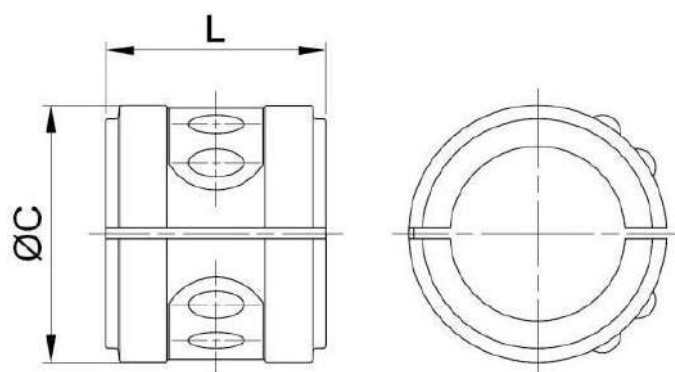
DN	HOSE BORE		SIZE	HV SERIES		NV SERIES	
	INCH			BAR	PSI	BAR	PSI
10	3/8"	06	450	6500	-	-	-
12	1/2"	08	420	6000	-	-	-
19	3/4"	12	420	6000	-	-	-
25	1"	16	420	6000	280	4000	
31	1.1/4"	20	420	6000	210	3000	
38	1.1/2"	24	420	6000	175	2500	
51	2"	32	420	6000	175	2500	
63	2.1/2"	40	350	5000	70	1000	
76	3"	48	350	5000	70	1000	
102	4"	64	-	-	70	1000	
153	6"	96	-	-	70	1000	

* Tested

* Static test to satisfy MBP based on 4:1 safety factor

**Impulse test based on SAE 100 R15 impulse test conditions

Lok-IT: CONNECTION CLAMPS



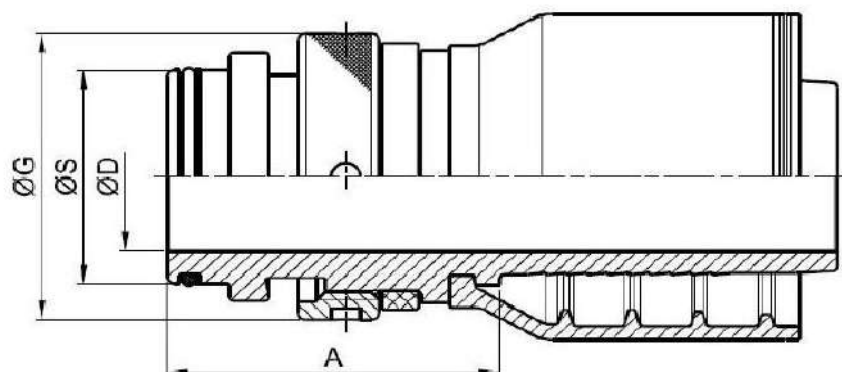
NV SERIES – CLAMP

CODE	HOSE BORE			DIMENSION (mm)	
	DN	INCH	SIZE	ØC	L
NVC-16	25	1"	16	42,0	39,0
NVC-20	31	1.1/4"	20	50,0	49,0
NVC-24	38	1.1/2"	24	62,0	58,0
NVC-32	51	2"	32	75,0	58,0
NVC-40	63	2.1/2"	40	85,0	56,0
NVC-48	76	3"	48	110,0	80,0
NVC-64	102	4"	64	138,0	90,0
NVC-96	153	6"	96	192,0	95,0

HV SERIES – CLAMP

CODE	HOSE BORE			DIMENSION (mm)	
	DN	INCH	SIZE	ØC	L
HVC-06	10	3/8"	06	25,0	35,0
HVC-08	12	1/2"	08	28,0	40,0
HVC-12	19	3/4"	12	36,0	39,0
HVC-16	25	1"	16	45,0	43,0
HVC-20	31	1.1/4"	20	52,0	57,0
HVC-24	38	1.1/2"	24	64,0	63,0
HVC-32	51	2"	32	78,0	69,0
HVC-40	63	2.1/2"	40	97,0	97,0
HVC-48	76	3"	48	*	*

Lok-IT: J SERIES



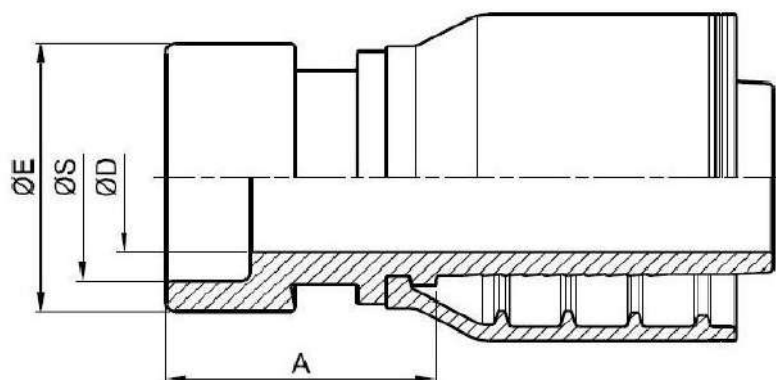
NV SERIES – FITTINGS MALE

CODE	HOSE BORE			DIMENSION (mm)			
	DN	INCH	SIZE	ØG	ØS	ØD	A
NVM11J-16-16	25	1"	16	42,0	27,0	20,0	49,0
NVM11J-20-20	31	1.1/4"	20	50,0	33,0	24,0	68,0
NVM11J-24-24	38	1.1/2"	24	62,0	44,0	32,0	76,0
NVM11J-32-32	51	2"	32	75,0	56,0	42,0	74,0
NVM11J-40-40	63	2.1/2"	40	90,0	66,0	55,0	85,0
NVM11J-48-48	76	3"	48	110,0	88,0	70,0	105,0
NVM11J-64-64	102	4"	64	138,0	105,0	87,0	117,0

HV SERIES – FITTINGS MALE

CODE	HOSE BORE			DIMENSION (mm)			
	DN	INCH	SIZE	ØG	ØS	ØD	A
HVM11J-06-06	10	3/8"	06	25,0	14,0	7,0	45,5
HVM11J-08-08	12	1/2"	08	30,0	18,0	9,5	48,0
HVM11J-12-12	19	3/4"	12	40,0	23,0	15,0	55,5
HVM11J-16-16	25	1"	16	45,0	28,0	20,0	62,0
HVM11J-20-20	31	1.1/4"	20	52,0	33,0	24,0	72,0

Lok-IT: J SERIES



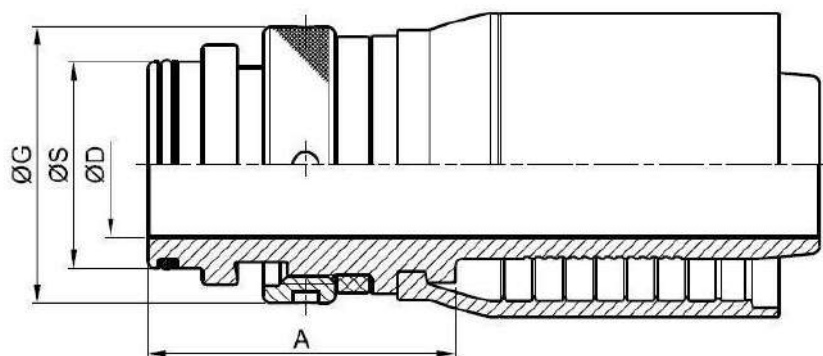
NV SERIES – FITTINGS FEMALE

CODE	HOSE BORE			ØG	DIMENSION (mm)		
	DN	INCH	SIZE		ØS	ØD	A
NVM11J-16-16	25	1"	16	33,0	27,0	20,0	42,0
NVM11J-20-20	31	1.1/4"	20	40,0	33,0	24,0	52,0
NVM11J-24-24	38	1.1/2"	24	53,0	44,0	32,0	50,5
NVM11J-32-32	51	2"	32	65,0	56,0	42,0	57,0
NVM11J-40-40	63	2.1/2"	40	75,0	66,0	55,0	56,0
NVM11J-48-48	76	3"	48	99,0	88,0	70,0	75,0
NVM11J-64-64	102	4"	64	118,0	105,0	87,0	82,0

HV SERIES – FITTINGS FEMALE

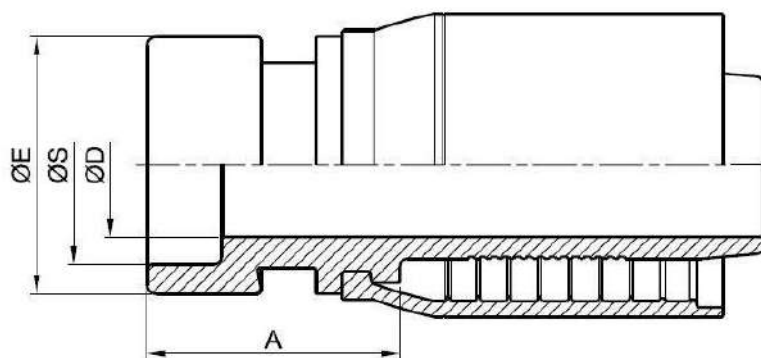
CODE	HOSE BORE			ØG	DIMENSION (mm)		
	DN	INCH	SIZE		ØS	ØD	A
HVM11J-06-06	10	3/8"	06	20,0	14,0	7,0	34,5
HVM11J-08-08	12	1/2"	08	24,0	18,0	9,5	36,5
HVM11J-12-12	19	3/4"	12	30,0	23,0	15,0	36,5
HVM11J-16-16	25	1"	16	36,0	28,0	20,0	46,0
HVM11J-20-20	31	1.1/4"	20	44,0	33,0	24,0	54,0

Lok-IT: X SERIES – XLZ SERIES



HV SERIES – FITTINGS MALE

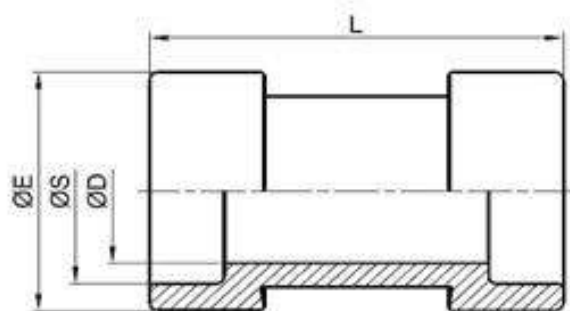
CODE	HOSE BORE			DIMENSION (mm)			
	DN	INCH	SIZE	ØG	ØS	ØD	A
HVM11X-16-16	25	1"	16	45,0	28,0	19,0	63,0
HVM11X-20-20	31	1.1/4"	20	52,0	33,0	24,0	72,0
HVM11X-24-24	38	1.1/2"	24	64,0	42,0	30,0	87,5
HVM11XLZ-32-32	51	2"	32	78,0	54,0	40,0	97,0
HVM11XLZ-40-40	63	2.1/2"	40	98,0	65,0	50,0	119,0



HV SERIES – FITTINGS FEMALE

CODE	HOSE BORE			DIMENSION (mm)			
	DN	INCH	SIZE	ØG	ØS	ØD	A
HVF10X-16-16	25	1"	16	36,0	28,0	19,0	47,0
HVF10X-20-20	31	1.1/4"	20	44,0	33,0	24,0	54,0
HVF10X-24-24	38	1.1/2"	24	54,0	42,0	30,0	59,0
HVF10XLZ-32-32	51	2"	32	70,0	54,0	40,0	75,0
HVF10XLZ-40-40	63	2.1/2"	40	84,0	65,0	50,0	86,5

Lok-IT: ADAPTOR



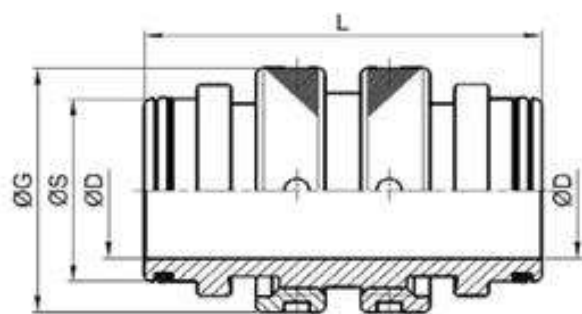
NV SERIES – ADAPTOR FEMALE / FEMALE

CODE	HOSE BORE			DIMENSION (mm)			
	DN	INCH	SIZE	ØE	ØS	ØD	L
NV10FF-16-16-00	25	1"	16	33,0	27,0	19,0	60,0
NV10FF-20-20-00	31	1.1/4"	20	40,0	33,0	24,0	80,0
NV10FF-24-24-00	38	1.1/2"	24	53,0	44,0	32,0	80,0
NV10FF-32-32-00	51	2"	32	65,0	56,0	44,0	80,0
NV10FF-40-40-00	63	2.1/2"	40	75,0	66,0	50,0	80,0
NV10FF-48-48-00	76	3"	48	99,0	88,0	70,0	109,0
NV10FF-64-64-00	102	4"	64	118,0	105,0	87,0	130,0
NV10FF-96-96-00	153	6"	96	176,0	160,0	138,0	150,0

HV SERIES – ADAPTOR FEMALE / FEMALE

CODE	HOSE BORE			DIMENSION (mm)			
	DN	INCH	SIZE	ØE	ØS	ØD	L
HV10FF-06-06-00	10	3/8"	06	20,0	14,0	7,0	50,0
HV10FF-08-08-00	12	1/2"	08	24,0	18,0	10,0	55,0
HV10FF-12-12-00	19	3/4"	12	30,0	23,0	15,0	60,0
HV10FF-16-16-00	25	1"	16	36,0	28,0	19,0	70,0
HV10FF-20-20-00	31	1.1/4"	20	44,0	33,0	24,0	95,0
HV10FF-24-24-00	38	1.1/2"	24	54,0	42,0	30,0	95,0
HV10FF-32-32-00	51	2"	32	70,0	54,0	40,0	100,0
HV10FF-40-40-00	63	2.1/2"	40	84,0	65,0	50,0	125,0

Lok-IT: ADAPTOR



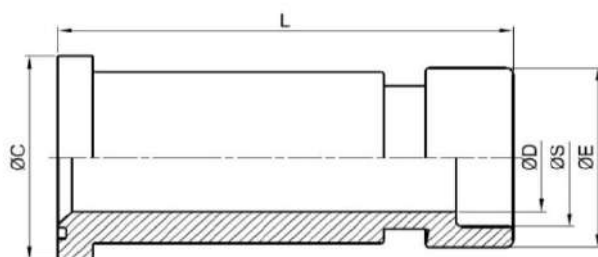
NV SERIES – ADAPTOR MALE / MALE

CODE	HOSE BORE			DIMENSION (mm)			
	DN	INCH	SIZE	ØE	ØS	ØD	L
NV11MM-16-16-00	25	1"	16	42,0	27,0	19,0	60,0
NV11MM-20-20-00	31	1.1/4"	20	50,0	33,0	24,0	80,0
NV11MM-24-24-00	38	1.1/2"	24	62,0	44,0	32,0	80,0
NV11MM-32-32-00	51	2"	32	76,0	56,0	44,0	80,0
NV11MM-40-40-00	63	2.1/2"	40	90,0	66,0	50,0	80,0
NV11MM-48-48-00	76	3"	48	125,0	88,0	70,0	109,0
NV11MM-64-64-00	102	4"	64	138,0	105,0	87,0	130,0
NV11MM-96-96-00	153	6"	96	192,0	160,0	138,0	150,0

HV SERIES – ADAPTOR MALE / MALE

CODE	HOSE BORE			DIMENSION (mm)			
	DN	INCH	SIZE	ØE	ØS	ØD	L
HV11MM-06-06-00	10	3/8"	06	25,0	14,0	7,0	76,0
HV11MM-08-08-00	12	1/2"	08	28,0	18,0	10,0	91,0
HV11MM-12-12-00	19	3/4"	12	36,0	23,0	15,0	100,0
HV11MM-16-16-00	25	1"	16	45,0	28,0	19,0	90,0
HV11MM-20-20-00	31	1.1/4"	20	52,0	33,0	24,0	122,0
HV11MM-24-24-00	38	1.1/2"	24	64,0	42,0	30,0	140,0
HV11MM-32-32-00	51	2"	32	78,0	54,0	40,0	140,0
HV11MM-40-40-00	63	2.1/2"	40	97,0	65,0	50,0	170,0

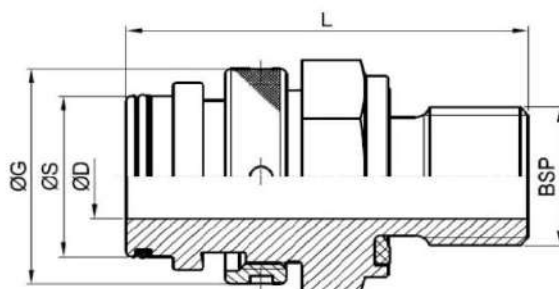
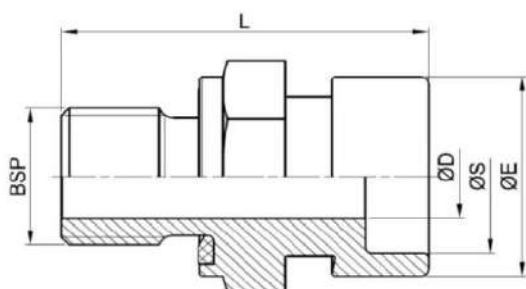
NEW DEVELOPE RANGE THAT WILL BE AVAILABLE



ADAPTORS – LANGE CODE 61 – FEMALE NV

ADAPTORS – LANGE CODE 62 – FEMALE NV

ADAPTORS – LANGE CODE 62 – FEMALE HV

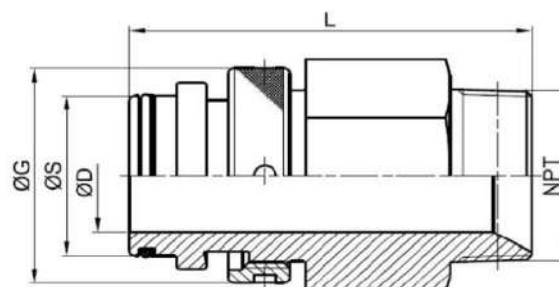
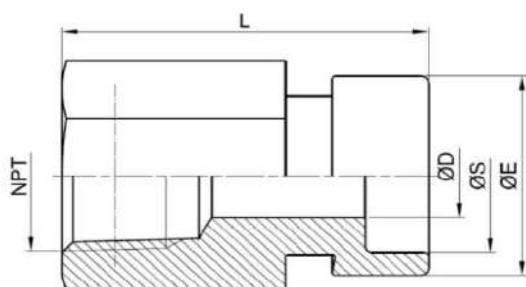


ADAPTORS - MALE NV - MALE BSP

ADAPTORS - FEMALE NV - MALE BSP

ADAPTORS - MALE HV - MALE BSP

ADAPTORS - FEMALE HV - MALE BSP



ADAPTORS - MALE NV - MALE NPT

ADAPTORS - FEMALE NV - FEMALE NPT

ADAPTORS - MALE HV - MALE NPT

ADAPTORS - FEMALE HV - FEMALE NPT

LubeTeam Hydraulic S.r.l.

Administration and Headquarter:

Via Tufara Scautieri, 6

83018 - San Martino Valle Caudina (AV)

Office and Warehouse:

S.S. 7 Appia, Km. 237,00

82011 - Airola BN

ITALY

Tel. +39 0823 950 994

Fax +39 0823 412 546

www.lubeteam.it info@lubeteam.it

Italian VAT / C.F. e P.IVA: 01251720627

Follow us



This document is the property of LubeTeam Hydraulic S.r.l. All data reported here are for the exclusive use of the Receiver. Reproduction is not authorized without writing permission, in all or in part of the content of this document, in accordance to Law 633 art. 171, dated April 22, 1941.

Il presente documento è di proprietà della LubeTeam Hydraulic S.r.l. I dati riportati sono per esclusivo del destinatario. La riproduzione, di tutto o in parte, non è autorizzata senza permesso scritto secondo l'art. 171 della L. 633 del 22 Aprile 1941.