



OLEOTECNICA
Flange
Semiflange SAE



 HYDRAULIC
COMPONENTS
& FLUID CONTAMINATION
CONTROL



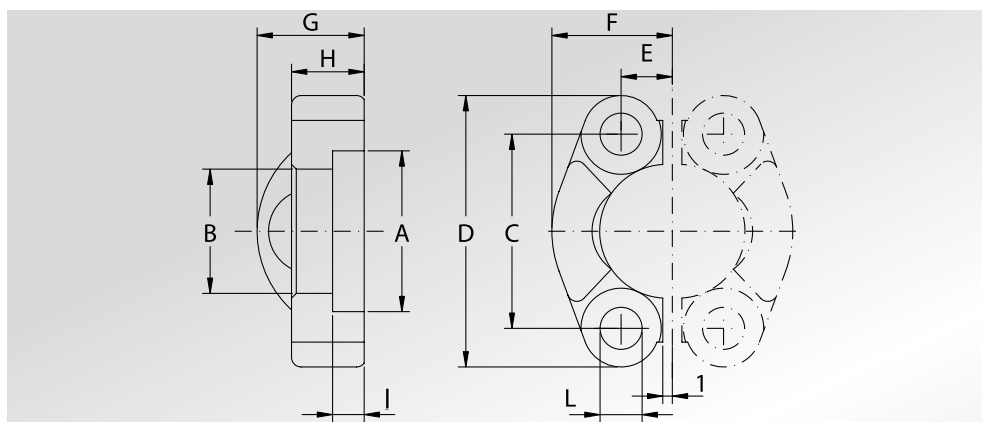
All trademarks belong to their respective owners; third party trademarks, product names, trade names, corporate names and company names mentioned may be trademarks of their respective owners or registered trademarks of other companies and are used for instructional purposes and for the benefit of the owner, without any end of Copyright infringement in force.

Tutti i marchi riportati appartengono ai legittimi proprietari; marchi di terzi, nomi di prodotti, nomi commerciali, nomi corporativi e società citati possono essere di proprietà dei rispettivi titolari o registrati da altre società e sono stati utilizzati a puro scopo esplicativo e a beneficio del possessore, senza alcun fine di violazione dei diritti di Copyright vigenti.

SEMIFLANGE TAGLIATE



CUT SPLIT FLANGES



Pressione max di esercizio raccomandata Kg/cm ²	Grandezza	Tipo	Dimensioni										Viti		Peso Kg	
Maximum recommended working pressure Kg/cm ²	Size	Type	Dimensions										Screws		Weight Kg	
			A	B	C	D	E	F	G	H	I	L	Metric	Unc		
SERIE 3000																
345	1/2"	AFS301B	30,96	24,26	38,10	54	8,74	22,8	19	13	6,22	8,75	M8x30	5/16"x1"1/4	0,12	
345	3/4"	AFS302B	38,89	32,13	47,63	65	11,13	25,9	22	14	6,22	10,75	M10x35	3/8"x1"1/2	0,16	
345	1"	AFS303B	45,24	38,48	52,37	70	13,08	29,2	24	16	7,49	10,75	M10x35	3/8"x1"1/2	0,22	
276	1"1/4	AFS304B	51,59	43,69	58,72	79	15,09	36,3	22	14	7,49	12,00	M10x35	7/16"x1"3/4	0,30	
276	1"1/4	AFS304L1075B	51,59	43,69	58,72	79	15,09	36,3	22	14	7,49	10,75	M10x35	-	0,30	
276	1"1/4	AFS304L1275B	51,59	43,69	58,72	79	15,09	36,3	22	14	7,49	12,75	M12x35	-	0,30	
207	1"1/2	AFS305B	61,09	50,80	69,85	94	17,86	41,1	25	16	7,49	13,50	M12x35	1/2"x1"3/4	0,43	
207	1"1/2	AFS305L1475B	61,09	50,80	69,85	94	17,86	41,1	25	16	7,49	14,75	M14x45	-	0,43	
207	2"	AFS306B	72,24	62,74	77,77	102	21,44	48,2	26	16	9,02	13,50	M12x35	1/2"x1"3/4	0,56	
207	2"	AFS306L1475B	72,24	62,74	77,77	102	21,44	48,2	26	16	9,02	14,75	M14x45	-	0,54	
172	2"1/2	AFS307B	84,94	74,93	88,90	114	25,40	54,1	38	19	9,02	13,50	M12x40	1/2"x1"3/4	0,74	
172	2"1/2	AFS307L1475B	84,94	74,93	88,90	114	25,40	54,1	38	19	9,02	14,75	M14x45	-	0,74	
138	3"	AFS308B	102,39	90,93	106,38	135	30,96	65,3	41	22	9,02	16,75	M16x50	5/8"x2"	1,30	
34	3"1/2	AFS309B	115,10	102,36	120,65	152	34,92	69,5	28	22	10,72	17,00	M16x50	5/8"x2"	1,27	
34	4"	AFS310B	127,79	115,06	130,18	162	38,88	76,0	35	25	10,72	17,00	M16x50	5/8"x2"	1,65	
34	5"	AFS311B	153,19	140,46	152,40	184	46,04	90,0	41	28	10,72	17,00	M16x55	5/8"x2"1/4	2,50	

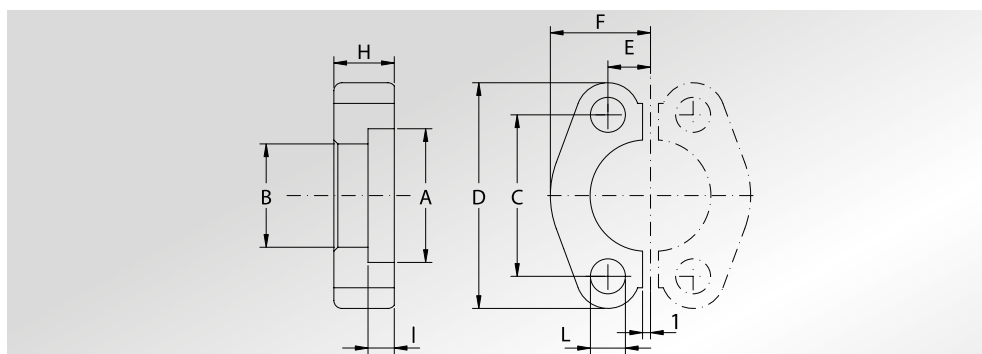
SERIE 6000

414	1/2"	AFS601B	32,54	24,64	40,49	56	9,12	23,6	22	16	7,24	8,75	M8x30	5/16"x1"1/4	0,16
414	3/4"	AFS602B	42,06	32,51	50,80	71	11,91	30,0	28	19	8,26	11,00	M10x35	3/8"x1"1/2	0,34
414	1"	AFS603B	48,41	38,86	57,15	81	13,89	34,8	33	24	9,02	13,00	M12x45	-	0,51
414	1"	AFS603L12B	48,41	38,86	57,15	81	13,89	34,8	33	24	9,02	12,00	-	7/16"x1"3/4	0,51
414	1"1/4	AFS604B	54,76	44,45	66,68	95	15,88	38,6	38	27	9,78	15,00	M14x45	-	0,80
414	1"1/4	AFS604L13B	54,76	44,45	66,68	95	15,88	38,6	38	27	9,78	13,50	M12x45	1/2"x1"3/4	0,80
414	1"1/2	AFS605B	64,29	51,56	79,38	113	18,26	47,5	43	30	12,07	17,00	M16x55	5/8"x2"1/4	1,44
414	2"	AFS606B	80,16	67,56	96,82	133	22,23	56,9	52	37	12,07	21,00	M20x70	3/4"x2"3/4	2,10

SEMIFLANGE PIATTE TAGLIATE



CUT FLAT SPLIT FLANGES



414	2"1/2	AFP607 *	108,5	89,50	123,8	180	29,35	76,0	-	48	20,00	26,00	M24x80	7/8"x3"1/4	4,60
414	3"	AFP608 *	132,5	114,50	152,4	208	35,7	89,0	-	58	31,00	33,00	M30x100	1"1/8"x3"1/2	6,70

DESIGNAZIONE PER ORDINE DESIGNATION FOR ORDER	Materiale / Material	
	S355	AISI 316L
Solo coppia semiflanguia Only pair cut split flange	AFS...B/AFP	AFX.../AFPX
Coppia semiflanguia completa di viti metriche, grower e o-ring Pair cut split flange complete of metric screws, grower type washers and o-ring	AFS...BM/AFP...M	AFX...M
Coppia semiflanguia completa di viti unc, grower e o-ring Pair cut split flange complete of unc screws, grower type washers and o-ring	AFS...BU	AFX...U

NOTE / NOTES

**QUESTO PRODOTTO E' VENDUTO A COPPIE
THIS PRODUCT IS SOLD BY PAIRS**

Rivestimento superficiale : zincatura Cr3

Superficial coating : zinking Cr3

set viti unc disponibili solo in acciaio al carbonio

unc screws set available only in carbon steel

* set viti disponibili solo metriche in acciaio al carbonio

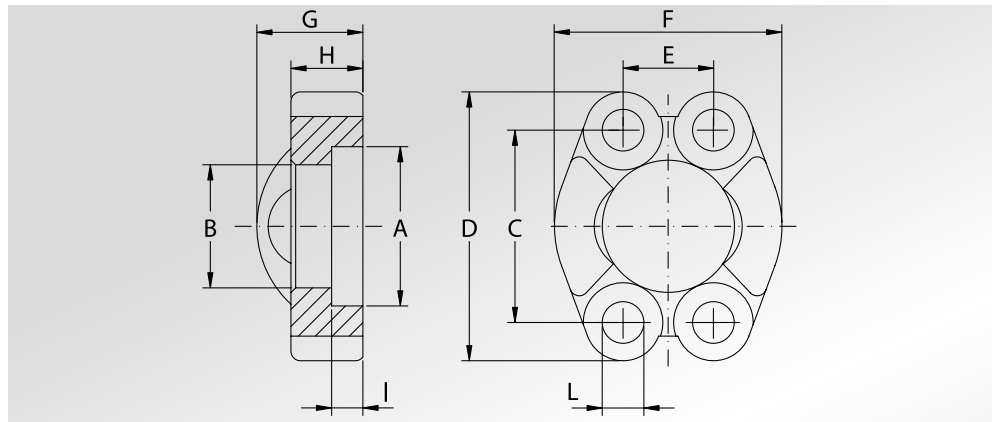
* screws set available only metric in carbon steel

* NON ZINCATE
* NOT GALVANIZED



SEMIFLANGE INTERE

UNCUT SPLIT FLANGES



Pressione max di esercizio raccomandata Kg/cm ²	Grandezza	Tipo	Dimensioni										Viti		Peso Kg
Maximum recommended working pressure Kg/cm ²	Size	Type	Dimensions										Screws		Weight Kg
			A	B	C	D	E	F	G	H	I	L	Metric	Unc	

SERIE 3000

345	1/2"	AFSI301B	30,96	24,26	38,10	54	17,48	45,6	19	13	6,22	8,75	M8x30	5/16"x1"1/4	0,12
345	3/4"	AFSI302B	38,89	32,13	47,63	65	22,23	51,8	22	14	6,22	10,75	M10x35	3/8"x1"1/2	0,16
345	1"	AFSI303B	45,24	38,48	52,37	70	26,19	58,4	24	16	7,49	10,75	M10x35	3/8"x1"1/2	0,22
276	1"1/4	AFSI304B	51,59	43,69	58,72	79	30,18	72,6	22	14	7,49	12,00	M10x35	7/16"x1"3/4	0,30
276	1"1/4	AFSI304L1075B	51,59	43,69	58,72	79	30,18	72,6	22	14	7,49	10,75	M10x35	-	0,30
276	1"1/4	AFSI304L1275B	51,59	43,69	58,72	79	30,18	72,6	22	14	7,49	12,75	M12x35	-	0,30
207	1"1/2	AFSI305B	61,09	50,80	69,85	94	35,71	82,2	25	16	7,49	13,50	M12x35	1/2"x1"3/4	0,43
207	1"1/2	AFSI305L1475B	61,09	50,80	69,85	94	35,71	82,2	25	16	7,49	14,75	M14x45	-	0,43
207	2"	AFSI306B	72,24	62,74	77,77	102	42,88	96,4	26	16	9,02	13,50	M12x35	1/2"x1"3/4	0,56
207	2"	AFSI306L1475B	72,24	62,74	77,77	102	42,88	96,4	26	16	9,02	14,75	M14x45	-	0,54
172	2"1/2	AFSI307B	84,94	74,93	88,90	114	50,80	108,2	38	19	9,02	13,50	M12x40	1/2"x1"3/4	0,74
172	2"1/2	AFSI307L1475B	84,94	74,93	88,90	114	50,80	108,2	38	19	9,02	14,75	M14x45	-	0,74
138	3"	AFSI308B	102,39	90,93	106,38	135	61,93	130,6	41	22	9,02	16,75	M16x50	5/8"x2"	1,30
34	3"1/2	AFSI309B	115,10	102,36	120,65	152	69,85	139,0	28	22	10,72	17,00	M16x50	5/8"x2"	1,27
34	4"	AFSI310B	127,79	115,06	130,18	162	77,77	152,0	35	25	10,72	17,00	M16x50	5/8"x2"	1,65
34	5"	AFSI311B	153,19	140,46	152,40	184	92,08	180,0	41	28	10,72	17,00	M16x55	5/8"x2"1/4	2,50

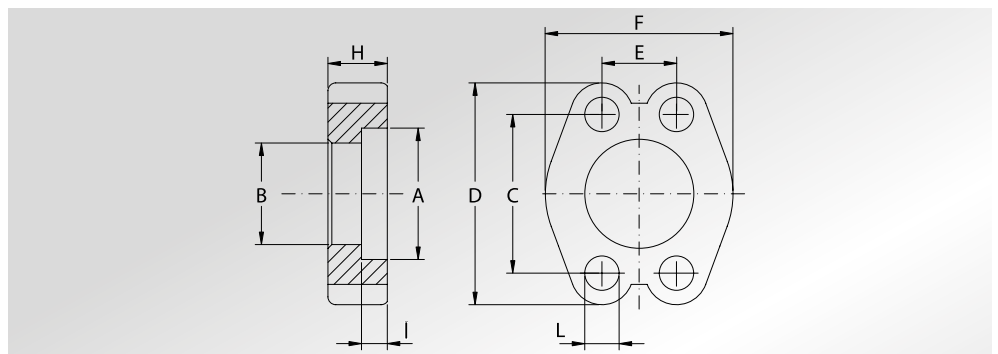
SERIE 6000

414	1/2"	AFSI601B	32,54	24,64	40,49	56	18,24	47,2	22	16	7,24	8,75	M8x30	5/16"x1"1/4	0,16
414	3/4"	AFSI602B	42,06	32,51	50,80	71	23,80	60,0	28	19	8,26	11,00	M10x35	3/8"x1"1/2	0,34
414	1"	AFSI603B	48,41	38,86	57,15	81	27,76	69,6	33	24	9,02	13,00	M12x45	-	0,51
414	1"	AFSI603L12B	48,41	38,86	57,15	81	27,76	69,6	33	24	9,02	12,00	-	7/16"x1"3/4	0,51
414	1"1/4	AFSI604	54,76	44,45	66,68	95	31,75	77,2	38	27	9,78	15,00	M14x45	-	0,80
414	1"1/4	AFSI604L13B	54,76	44,45	66,68	95	31,75	77,2	38	27	9,78	13,50	M12x45	1/2"x1"3/4	0,80
414	1"1/2	AFSI605B	64,29	51,56	79,38	113	36,50	95,0	43	30	12,07	17,00	M16x55	5/8"x2"1/4	1,44
414	2"	AFSI606B	80,16	67,56	96,82	133	44,45	113,8	52	37	12,07	21,00	M20x70	3/4"x2"3/4	2,10



SEMIFLANGE PIATTE INTERE

UNCUT FLAT SPLIT FLANGES

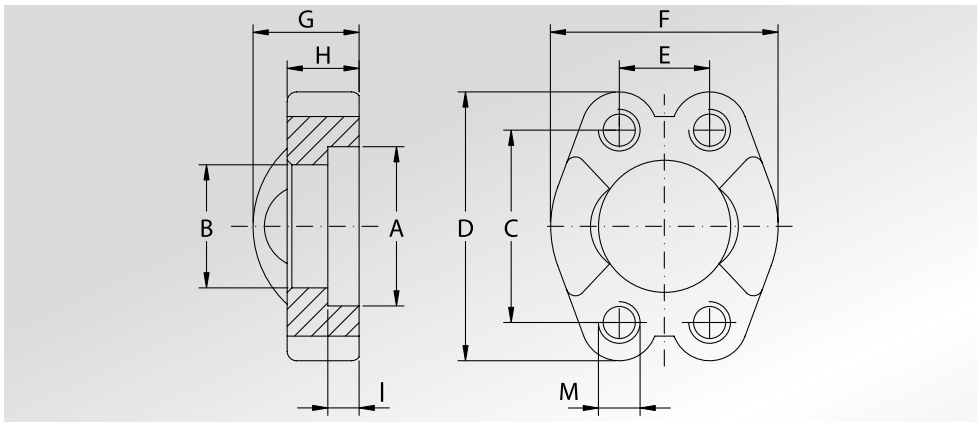


414	2"1/2	AFPI607 *	108,5	89,50	123,8	180	58,7	152	-	48	20,00	26,00	M24x80	7/8"x3"1/4	4,60
414	3"	AFPI608 *	132,5	114,50	152,4	208	71,4	178	-	58	25,00	31,00	M30x100	1"1/8"x3"1/2	6,70

DESIGNAZIONE PER ORDINE DESIGNATION FOR ORDER	Materiale / Material	
	S355	AISI 316L
Solo semiflanguia intera Only uncut split flange	AFSI...B / AFPI...	AFXI... / AFPXI...
Semiflanguia intera completa di viti metriche, grower e o-ring Uncut split flange complete of metric screws, grower type washers and o-ring	AFSI...BM / AFPI...M	AFXI...M
Semiflanguia intera completa di viti unc, grower e o-ring Uncut split flange complete of unc screws, grower type washers and o-ring	AFSI...BU	AFXI...U

NOTE / NOTES

Rivestimento superficiale : zincatura Cr3
 Superficial coating : zinking Cr3
 set viti unc disponibili solo in acciaio al carbonio
 unc screws set available only in carbon steel
 * set viti disponibili solo metriche in acciaio al carbonio
 * screws set available only metric in carbon steel
 * NON ZINCATE
 * NOT GALVANIZED



**SEMIFLANGE
INTERE CON FORI
DI FISSAGGIO
FILETTATI METRICI**



**UNCUT SPLIT
FLANGES WITH
METRIC THREADED
FIXING HOLES**

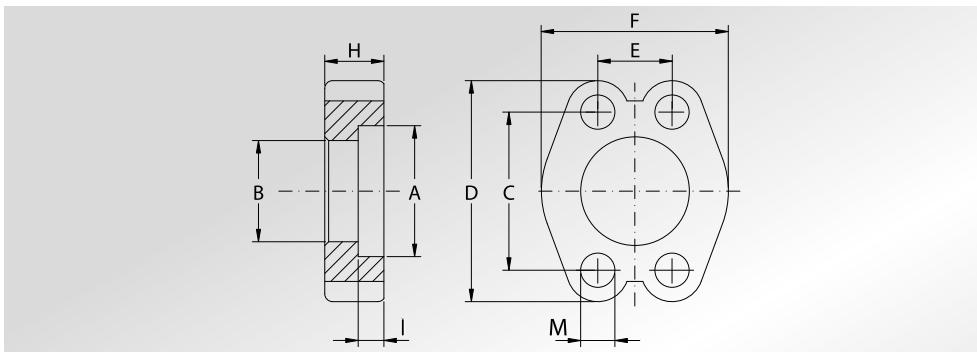
Pressione max di esercizio raccomandata Kg/cm ²	Grandezza	Tipo	Dimensioni										Peso Kg
Maximum recommended working pressure Kg/cm ²	Size	Type	Dimensions										Weight Kg
			A	B	C	D	E	F	G	H	I	M	

SERIE 3000

345	1/2"	GFSI301B	30,96	24,26	38,10	54	17,48	45,6	19	13	6,22	M8	0,12
345	3/4"	GFSI302B	38,89	32,13	47,63	65	22,23	51,8	22	14	6,22	M10	0,16
345	1"	GFSI303B	45,24	38,48	52,37	70	26,19	58,4	24	16	7,49	M10	0,22
276	1"1/4	GFSI304B	51,59	43,69	58,72	79	30,18	72,6	22	14	7,49	M10	0,30
207	1"1/2	GFSI305B	61,09	50,80	69,85	94	35,71	82,2	25	16	7,49	M12	0,43
207	2"	GFSI306B	72,24	62,74	77,77	102	42,88	96,4	26	16	9,02	M12	0,56
172	2"1/2	GFSI307B	84,94	74,93	88,90	114	50,80	108,2	38	19	9,02	M12	0,74
138	3"	GFSI308B	102,39	90,93	106,38	135	61,93	130,6	41	22	9,02	M16	1,30
34	3"1/2	GFSI309B	115,10	102,36	120,65	152	69,85	139,0	28	22	10,72	M16	1,27
34	4"	GFSI310B	127,79	115,06	130,18	162	77,77	152,0	35	25	10,72	M16	1,65
34	5"	GFSI311B	153,19	140,46	152,40	184	92,08	180,0	41	28	10,72	M16	2,50

SERIE 6000

414	1/2"	GFSI601B	32,54	24,64	40,49	56	18,24	47,2	22	16	7,24	M8	0,16
414	3/4"	GFSI602B	42,06	32,51	50,80	71	23,80	60,0	28	19	8,26	M10	0,34
414	1"	GFSI603B	48,41	38,86	57,15	81	27,76	69,6	33	24	9,02	M12	0,51
414	1"1/4	GFSI604B	54,76	44,45	66,68	95	31,75	77,2	38	27	9,78	M14	0,80
414	1"1/2	GFSI605B	64,29	51,56	79,38	113	36,50	95,0	43	30	12,07	M16	1,44
414	2"	GFSI606B	80,16	67,56	96,82	133	44,45	113,8	52	37	12,07	M20	2,10



**SEMIFLANGE PIATTE
INTERE CON FORI
DI FISSAGGIO
FILETTATI METRICI**



**UNCUT FLAT SPLIT
FLANGES WITH
METRIC THREADED
FIXING HOLES**

414	2"1/2	GFPI607 *	108,5	89,50	123,8	180	58,7	152	-	48	20,00	M24	4,90
414	3"	GFPI608 *	132,5	114,50	152,4	208	71,4	178	-	58	25,00	M30	7,30

DESIGNAZIONE PER ORDINE DESIGNATION FOR ORDER	Materiale / Material	
	S355	AISI 316L

Semiflangua intera con fori di fissaggio metrici Uncut split flange with metric threaded fixing holes	GFSI...B / GFPI...	GFXI... / GFPXI...
--	---------------------------	---------------------------

NOTE / NOTES

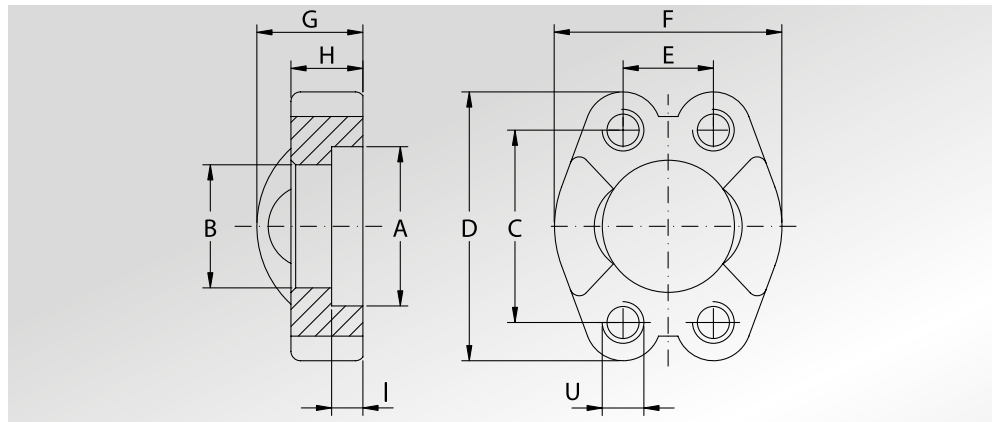
Rivestimento superficiale : zincatura Cr3
Superficial coating : zinking Cr3

* NON ZINCATE
* NOT ZINKING



**SEMIFLANGE
INTERE CON FORI
DI FISSAGGIO
FILETTATI UNC**

**UNCUT SPLIT FLANGES
WITH UNC THREADED
FIXING HOLES**



Pressione max di esercizio raccomandata Kg/cm ²	Grandezza	Tipo	Dimensioni										Peso Kg
Maximum recommended working pressure Kg/cm ²	Size	Type	Dimensions										Weight Kg
			A	B	C	D	E	F	G	H	I	U	

SERIE 3000

345	1/2"	GFSI301UB	30,96	24,26	38,10	54	17,48	45,6	19	13	6,22	5/16"	0,12
345	3/4"	GFSI302UB	38,89	32,13	47,63	65	22,23	51,8	22	14	6,22	3/8"	0,16
345	1"	GFSI303UB	45,24	38,48	52,37	70	26,19	58,4	24	16	7,49	3/8"	0,22
276	1 1/4"	GFSI304UB	51,59	43,69	58,72	79	30,18	72,6	22	14	7,49	7/16"	0,30
207	1 1/2"	GFSI305UB	61,09	50,80	69,85	94	35,71	82,2	25	16	7,49	1/2"	0,43
207	2"	GFSI306UB	72,24	62,74	77,77	102	42,88	96,4	26	16	9,02	1/2"	0,56
172	2 1/2"	GFSI307UB	84,94	74,93	88,90	114	50,80	108,2	38	19	9,02	1/2"	0,74
138	3"	GFSI308UB	102,39	90,93	106,38	135	61,93	130,6	41	22	9,02	5/8"	1,30
34	3 1/2"	GFSI309UB	115,10	102,36	120,65	152	69,85	139,0	28	22	10,72	5/8"	1,27
34	4"	GFSI310UB	127,79	115,06	130,18	162	77,77	152,0	35	25	10,72	5/8"	1,65
34	5"	GFSI311UB	153,19	140,46	152,40	184	92,08	180,0	41	28	10,72	5/8"	2,50

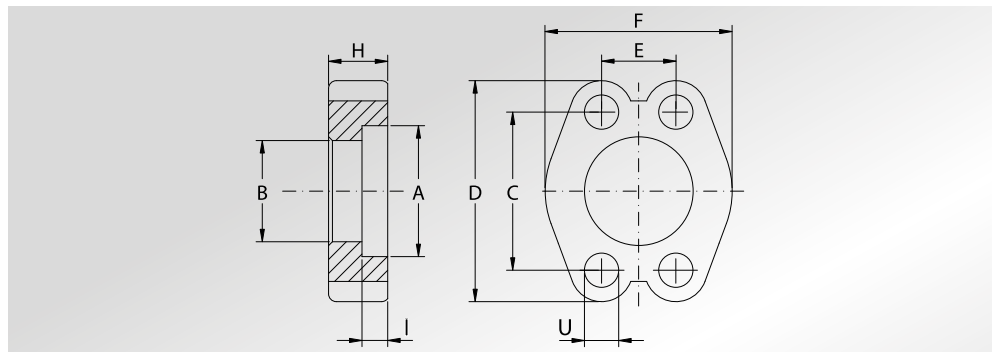
SERIE 6000

414	1/2"	GFSI601UB	32,54	24,64	40,49	56	18,24	47,2	22	16	7,24	5/16"	0,16
414	3/4"	GFSI602UB	42,06	32,51	50,80	71	23,80	60,0	28	19	8,26	3/8"	0,34
414	1"	GFSI603UB	48,41	38,86	57,15	81	27,76	69,6	33	24	9,02	7/16"	0,51
414	1 1/4"	GFSI604UB	54,76	44,45	66,68	95	31,75	77,2	38	27	9,78	1/2"	0,80
414	1 1/2"	GFSI605UB	64,29	51,56	79,38	113	36,50	95,0	43	30	12,07	5/8"	1,44
414	2"	GFSI606UB	80,16	67,56	96,82	133	44,45	113,8	52	37	12,07	3/4"	2,10



**SEMIFLANGE PIATTE
INTERE CON FORI
DI FISSAGGIO
FILETTATI UNC**

**UNCUT FLAT SPLIT
FLANGES WITH UNC
THREADED FIXING
HOLES**



414	2 1/2"	GFPI607U*	108,5	89,50	123,8	180	58,7	152	-	48	20,00	7/8"	4,90
414	3"	GFPI608U*	132,5	114,50	152,4	208	71,4	178	-	58	25,00	1 1/8"	7,30

DESIGNAZIONE PER ORDINE DESIGNATION FOR ORDER	Materiale / Material	
	S355	AISI 316L
Semiflangua intera con fori di fissaggio metrici Uncut split flange with metric threaded fixing holes	GFSI...UB GFPI...U	GFXI... GFPXI...U

NOTE / NOTES

Rivestimento superficiale : zincatura Cr3
Superficial coating : zinking Cr3

* NON ZINCATE
* NOT ZINKING

LubeTeam Hydraulic S.r.l.

Administration and Headquarter:

Via Tufara Scautieri, 6

83018 - San Martino Valle Caudina (AV)

Office and Warehouse:

S.S. 7 Appia, Km. 237,00

82011 - Airola BN

ITALY

Tel. +39 0823 950 994

Fax +39 0823 412 546

www.lubeteam.it info@lubeteam.it

Italian VAT / C.F. e P.IVA: 01251720627

Follow us



This document is the property of LubeTeam Hydraulic S.r.l. All data reported here are for the exclusive use of the Receiver. Reproduction is not authorized without writing permission, in all or in part of the content of this document, in accordance to Law 633 art. 171, dated April 22, 1941.

Il presente documento è di proprietà della LubeTeam Hydraulic S.r.l. I dati riportati sono per esclusivo del destinatario. La riproduzione, di tutto o in parte, non è autorizzata senza permesso scritto secondo l'art. 171 della L. 633 del 22 Aprile 1941.