



STAUFF

Collari di fissaggio
Altri collari di fissaggio



 HYDRAULIC
COMPONENTS
& FLUID CONTAMINATION
CONTROL



All trademarks belong to their respective owners; third party trademarks, product names, trade names, corporate names and company names mentioned may be trademarks of their respective owners or registered trademarks of other companies and are used for instructional purposes and for the benefit of the owner, without any end of Copyright infringement in force.

Tutti i marchi riportati appartengono ai legittimi proprietari; marchi di terzi, nomi di prodotti, nomi commerciali, nomi corporativi e società citati possono essere di proprietà dei rispettivi titolari o registrati da altre società e sono stati utilizzati a puro scopo esplicativo e a beneficio del possessore, senza alcun fine di violazione dei diritti di Copyright vigenti.





Cushion Clamp Series

STC / SPC

148



Channel Rail

SCS

149



Compact Twin Series

DS

150



Agriculture Twin Series

AG

150



Pipe / Tube Bushing

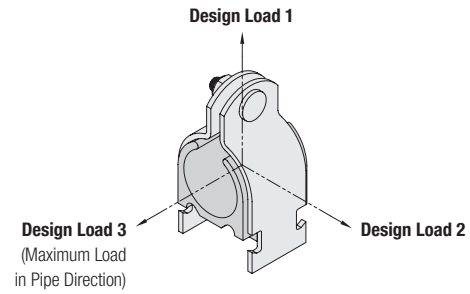
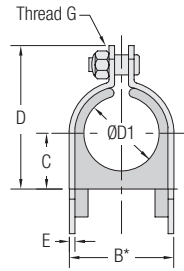
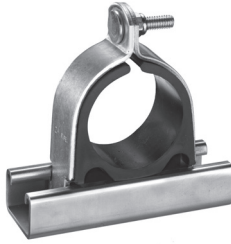
RF

151



Clamp Assembly - Types STC / SPC

(for Use with Channel Rail SCS)



| Outside Diameter Pipe / Tube / Hose Ø D1 (mm) | Nominal Bore Pipe (in) | Ordering Codes (1 Clamp Assembly) (*** = Material Code) | Standard Packaging Units pcs. | Dimensions (mm/in) | | | | | | Design Loads (kN/psi) | | |
|--|---------------------------------|---|---|-----------------------|------|-------|-----|-------------|-------|--------------------------|------|--|
| | | | | B* | C | D | E | Thread G | 1 | 2 | 3 | |
| 6,4 | 1/4 | STC-025-**-K | 24 / box | 15,7 | 5,6 | 28,2 | 2 | 1/4-20 UNC | 1,78 | 0,22 | 0,22 | |
| | | | | .62 | .22 | 1.11 | .08 | | 400 | 50 | 50 | |
| 8 | 3/8 | STC-037-**-K | 24 / box | 19,1 | 7,1 | 31,5 | 2 | 1/4-20 UNC | 1,78 | 0,22 | 0,22 | |
| | | | | .75 | .28 | 1.24 | .08 | | 400 | 50 | 50 | |
| 12,7 | 1/2 | STC-050-**-K | 24 / box | 22,1 | 8,6 | 34,5 | 2 | 1/4-20 UNC | 1,78 | 0,22 | 0,22 | |
| | | | | .87 | .34 | 1.36 | .08 | | 400 | 50 | 50 | |
| 13,5 | 1/4 | SPC-025-**-K | 24 / box | 23,1 | 9,1 | 35,8 | 2 | 1/4-20 UNC | 1,78 | 0,22 | 0,22 | |
| | | | | .91 | .36 | 1.41 | .08 | | 400 | 50 | 50 | |
| 16 | 5/8 | STC-062-**-K | 24 / box | 25,4 | 10,4 | 38,1 | 2 | 1/4-20 UNC | 1,78 | 0,22 | 0,22 | |
| | | | | 1.00 | .41 | 1.50 | .08 | | 400 | 50 | 50 | |
| 17,2 | 3/8 | SPC-037-**-K | 24 / box | 27,2 | 11,4 | 40,4 | 2 | 1/4-20 UNC | 2,67 | 0,33 | 0,33 | |
| | | | | 1.07 | .45 | 1.59 | .08 | | 600 | 75 | 75 | |
| 19 | 3/4 | STC-075-**-K | 24 / box | 33,8 | 13,5 | 45,2 | 2 | 1/4-20 UNC | 2,67 | 0,33 | 0,33 | |
| | | | | 1.33 | .53 | 1.78 | .08 | | 600 | 75 | 75 | |
| 21,3 | 1/2 | SPC-050-**-K | 24 / box | 36,8 | 15,0 | 48,5 | 2 | 1/4-20 UNC | 2,67 | 0,33 | 0,33 | |
| | | | | 1.45 | .59 | 1.91 | .08 | | 600 | 75 | 75 | |
| 22,2 | 7/8 | STC-087-**-K | 24 / box | 36,8 | 14,7 | 48,5 | 2 | 1/4-20 UNC | 2,67 | 0,33 | 0,33 | |
| | | | | 1.45 | .58 | 1.91 | .08 | | 600 | 75 | 75 | |
| 25,4 | 1 | STC-100-**-K | 12 / box | 42,2 | 16,8 | 51,6 | 2,8 | 1/4-20 UNC | 2,67 | 0,33 | 0,33 | |
| | | | | 1.66 | .66 | 2.03 | .11 | | 600 | 75 | 75 | |
| 26,9 | 3/4 | SPC-075-**-K | 12 / box | 45,5 | 18,3 | 54,9 | 2,8 | 1/4-20 UNC | 2,67 | 0,33 | 0,33 | |
| | | | | 1.79 | .72 | 2.16 | .11 | | 600 | 75 | 75 | |
| 32 | 1-1/4 | STC-125-**-K | 12 / box | 48,8 | 19,8 | 58,4 | 2,8 | 1/4-20 UNC | 2,67 | 0,33 | 0,33 | |
| | | | | 1.92 | .78 | 2.30 | .11 | | 600 | 75 | 75 | |
| 33,7 | 1 | SPC-100-**-K | 12 / box | 56,4 | 23,1 | 69,9 | 3 | 5/16-18 UNC | 2,67 | 0,33 | 0,33 | |
| | | | | 2.22 | .91 | 2.75 | .12 | | 600 | 75 | 75 | |
| 38 | 1-1/2 | STC-150-**-K | 12 / box | 56,4 | 23,1 | 69,9 | 3 | 5/16-18 UNC | 2,67 | 0,33 | 0,33 | |
| | | | | 2.22 | .91 | 2.75 | .12 | | 600 | 75 | 75 | |
| 42 | 1-1/4 | SPC-125-**-K | 12 / box | 62,7 | 26,2 | 77,0 | 3 | 5/16-18 UNC | 3,56 | 0,56 | 0,56 | |
| | | | | 2.47 | 1.03 | 3.03 | .12 | | 800 | 125 | 125 | |
| 48,3 | 1-1/2 | SPC-150-**-K | 12 / box | 62,7 | 29,5 | 83,3 | 3 | 5/16-18 UNC | 3,56 | 0,56 | 0,56 | |
| | | | | 2.47 | 1.16 | 3.28 | .12 | | 800 | 125 | 125 | |
| 50,8 | 2 | STC-200-**-K | 12 / box | 69,1 | 29,5 | 83,3 | 3 | 5/16-18 UNC | 3,56 | 0,56 | 0,56 | |
| | | | | 2.72 | 1.16 | 3.28 | .12 | | 800 | 125 | 125 | |
| 60,3 | 2 | SPC-200-**-K | 1 / bag | 69,1 | 35,8 | 96,0 | 3 | 5/16-18 UNC | 3,56 | 0,56 | 0,56 | |
| | | | | 3.22 | 1.41 | 3.78 | .12 | | 800 | 125 | 125 | |
| 63,5 | 2-1/2 | STC-250-**-K | 1 / bag | 88,1 | 38,9 | 102,4 | 3 | 5/16-18 UNC | 3,56 | 0,56 | 0,56 | |
| | | | | 3.47 | 1.53 | 4.03 | .12 | | 800 | 125 | 125 | |
| 66,7 | 2-5/8 | STC-262-**-K | 1 / bag | 88,1 | 38,9 | 102,4 | 3 | 5/16-18 UNC | 3,56 | 0,56 | 0,56 | |
| | | | | 3.47 | 1.53 | 4.03 | .12 | | 800 | 125 | 125 | |
| 73 | 2-1/2 | SPC-250-**-K | 1 / bag | 94,5 | 42,2 | 108,5 | 3 | 5/16-18 UNC | 3,56 | 0,56 | 0,56 | |
| | | | | 3.72 | 1.66 | 4.27 | .12 | | 800 | 125 | 125 | |
| 76,2 | 3 | STC-300-**-K | 1 / bag | 100,8 | 45,2 | 114,8 | 3 | 5/16-18 UNC | 4,45 | 0,89 | 0,67 | |
| | | | | 3.97 | 1.78 | 4.52 | .12 | | 1 000 | 200 | 150 | |
| 88,9 | 3 | SPC-300-**-K | 1 / bag | 110,7 | 50,0 | 124,7 | 3 | 3/8-16 UNC | 4,45 | 0,89 | 0,67 | |
| | | | | 4.36 | 1.97 | 4.91 | .12 | | 1 000 | 200 | 150 | |
| 102 | 3-1/2 | SPC-350-**-K | 1 / bag | 126,2 | 57,9 | 140,5 | 3 | 3/8-16 UNC | 4,45 | 0,89 | 0,67 | |
| | | | | 4.97 | 2.28 | 5.53 | .12 | | 1 000 | 200 | 150 | |
| 114 | 4 | SPC-400-**-K | 1 / bag | 138,9 | 64,3 | 153,2 | 3 | 3/8-16 UNC | 4,45 | 0,89 | 0,67 | |
| | | | | 5.47 | 2.53 | 6.03 | .12 | | 1 000 | 200 | 150 | |
| 140 | 5 | SPC-500-**-K | 1 / bag | 164,3 | 77,0 | 178,6 | 3,6 | 3/8-16 UNC | 4,45 | 0,89 | 0,67 | |
| | | | | 6.47 | 3.03 | 7.03 | .14 | | 1 000 | 200 | 150 | |
| 168 | 6 | SPC-600-**-K | 1 / bag | 189,7 | 89,7 | 204,0 | 3,6 | 3/8-16 UNC | 4,45 | 0,89 | 0,67 | |
| | | | | 7.47 | 3.53 | 8.03 | .14 | | 1 000 | 200 | 150 | |

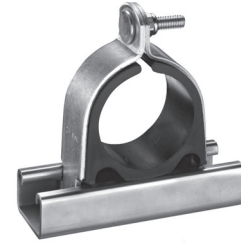
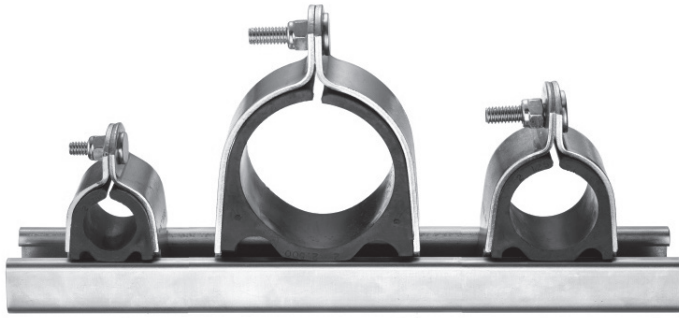
* Minimum required for installation.

One clamp assembly is consisting of two carbon steel clamp halves (one with threaded stud), one thermoplastic cushion insert and one lock nut with Nylon insert. Channel rail not included. All threaded parts are only available with unified coarse (UNC) thread. Alternative materials and surface finishings are available upon request. Contact STAUFF for further information.



Clamp Assembly ■ Types STC / SPC

(for Use with Channel Rail SCS)



Standard Materials



Cushion Insert
Thermoplastic Elastomer (80 Shore-A)
 Colour: Black

The cushion material is compatible with most oils, chemicals and cleaning solvents and suitable for applications within a temperature range of -50 °C ... +125 °C (-58 °F ... +257 °F).

Alternative materials are available upon request.
 Please contact STAUFF for further information.

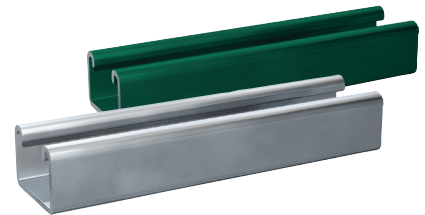
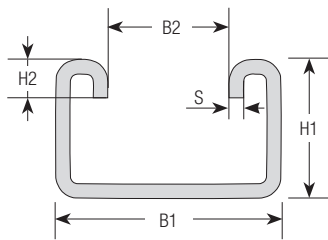
Product Features

- Clamp assemblies designed to mount directly to 41,3 mm / 1-5/8 in wide strut channels, such as the STAUFF Channel Rail, type SCS
- Suitable for most Fluid Power applications ranging from mobile equipment to industrial machinery
- Reduced horizontal mounting space
- Easy installation and retro fit capability
- Reduces shock and vibration while preventing galvanic corrosion

Ordering Codes

| Clamp Assembly | | *STC-*125-*W4-*K |
|---|--|------------------|
| * Type of clamp | STC (Tube diameters) SPC (Pipe diameters) | STC SPC |
| * Pipe / Tube O.D. (according to dimension table) | | 125 |
| * Material code | Carbon Steel, zinc-plated, blue-chromated Stainless Steel V2A 1.4301 (AISI 304) Stainless Steel V4A 1.4401 (AISI 316) | W32 W4 W5 |
| Assembling | Components packed in kits | K |

Channel Rail ■ Type SCS



| Dimensions (mm/in) | | | | |
|--------------------|-----------|------|-----|-----|
| B1 | B2 | H1 | H2 | S |
| 41,3 | 22,2 | 25,4 | 7 | 2,7 |
| 1.63 (1-5/8) | .88 (7/8) | 1.00 | .28 | .11 |

Alternative rail profiles, materials and surface finishings are available upon request. Contact STAUFF for further information.

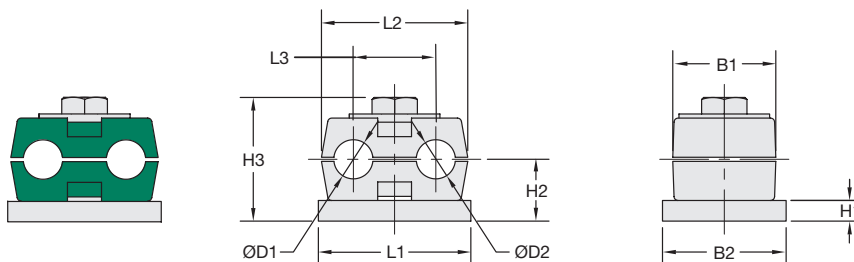
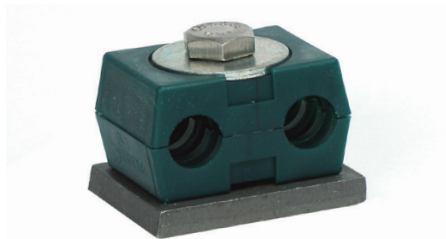
Ordering Codes

| Strut Channel | | *SCS-*048-*1-*PL |
|------------------|--|------------------|
| * Strut Channel | | SCS |
| * Length of Rail | 1,22 m / 4.00 ft / 48 in 3,05 m / 10.00 ft / 120 in | 048 120 |
| * Height of Rail | 25,4 mm / 1.00 in | 1 |
| * Material code | Carbon Steel, uncoated Carbon Steel, green painted | PL GR |

N



Compact Twin Series: Clamp Body Type DS



Ordering Codes

Clamp Body *1-*06/06-*PP-*DS

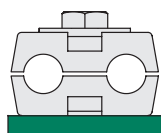
One clamp body is consisting of two clamp halves.

- * STAUFF Group DS 1 **1**
- * Exact outside diameters Ø D1 / Ø D2 (mm) **06/06**
- * Clamp Body Material (Polypropylene) **PP**
- * Compact Twin Series **DS**

| Group | Outside Diameter Pipe / Tube Ø D1 / Ø D2 | | Nominal Bore Pipe (in) | Copper Tube ASTM B88 (in) | Ordering Codes (2 Clamp Halves) | Dimensions (mm/in) | | | | | | | | | |
|-------------|--|------|------------------------|---------------------------|---------------------------------|--------------------|------|-----|-----|-----|------|-----|------|--|--|
| | (mm) | (in) | | | | L1 | L2 | L3 | H1 | H2 | H3 | B1 | B2 | | |
| STAUFF DS 1 | 6 | | | | 106/06-PP-DS | | | | | | | | | | |
| | 6,4 | 1/4 | | | 106.4/06.4-PP-DS | | | | | | | | | | |
| | 8 | 5/16 | | | 108/08-PP-DS | 37 | 35,5 | 20 | 5 | 15 | 30 | 25 | 30 | | |
| | 9,5 | 3/8 | | 1/4 | 109.5/09.5-PP-DS | 1.46 | 1.40 | .79 | .20 | .59 | 1.18 | .98 | 1.18 | | |
| | 10 | | 1/8 | | 110/110-PP-DS | | | | | | | | | | |

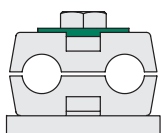
Additional outside diameters are available upon request. Please contact STAUFF for further information.

Compact Twin Series: Metal Hardware



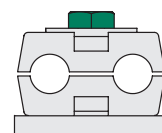
Weld Plate, Type SP-DS

SP-DS-1-U-W2
Thread size: 1/4–20 UNC
Carbon Steel, phosphated



Cover Plate, Type US-DS

US-DS-1-W3
Carbon Steel, zinc/nickel-plated

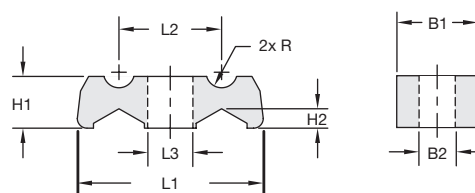
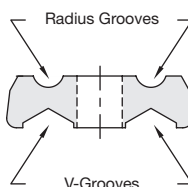


Hexagon Bolt, Type AS

AS-1/4-20UNCx1-W3
Thread size: 1/4–20 UNC
Carbon Steel, zinc/nickel-plated

All threaded parts are only available with unified coarse (UNC) thread. Rail mount and stacking assemblies as well as alternative materials and surface finishings are available upon request.

Agriculture Twin Series: Clamp Body Type AG



| Group | Min/Max Outside Diameters Pipe / Tube | | | | Ordering Codes (1 Clamp Body) | Dimensions (mm/in) | | | | | | | |
|-------|---------------------------------------|-------------|---------------------|-------------|-------------------------------|--------------------|--------------|-------------|-------------|------------|--------------|-------------|-------------|
| | Radius Grooves (mm) (in) | | V-Grooves (mm) (in) | | | L1 | L2 | L3 | H1 | H2 | B1 | B2 | R |
| 2 | 3 ... 10 | .1239 | 4 ... 15 | .2659 | 215.8/09.6-PP-AG-BK-HV | 57,5 2.26 | 31,7 1.25 | 14,0 .55 | 16,0 .63 | 7,1 .24 | 25,0 .98 | 11,0 .43 | 4,8 .19 |
| 3 | 4 ... 25 | .1698 | 7 ... 20 | .2879 | 324.8/19.5-PP-AG-BK-HV | 62,0 2.48 | 34,5 1.36 | 14,0 .55 | 19,0 .75 | 7,1 .28 | 32,0 1.26 | 11,0 .43 | 12,4 .49 |

Standard Material



Polypropylene
Colour: Black

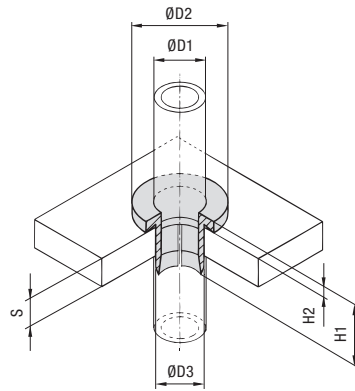
See pages 154 / 155 for properties and technical information.

Product Features

- Flip the clamp body to choose between the radius grooved or the v-grooved design (suitable for a range of diameters)
- Use M10 or 3/8–16 UNC bolts or screws (preferably with washers) to fasten clamp bodies directly to the machine
- Clamp bodies can be stacked for multi-level assembly

Additional outside diameters are available upon request. Please contact STAUFF for further information.





Pipe / Tube Bushing - Type SRF



| Outside Diameter ØD1 | | Nominal Bore (in) | Dimensions (mm/in) | | | Wall Thickness (mm/in) | | Mounting Bore (mm/in) |
|----------------------|-------|--|-----------------------|-----|-----|---------------------------|------|--------------------------|
| (mm) | (in) | | ØD2 | H1 | H2 | S | ØD3 | |
| 6 | 1/4 | | 18 | 22 | 4 | 4 ... 12 | 10 | |
| | | | .71 | .87 | .16 | .1647 | .39 | |
| 8 | 5/16 | | 20 | 22 | 4 | 4 ... 12 | 12 | |
| | | | .79 | .87 | .16 | .1647 | .47 | |
| 10 | 3/8 | 1/8 Pipe 1/4 Copper Tube (ASTM B88) | 22 | 22 | 4 | 4 ... 12 | 14 | |
| | | | .87 | .87 | .16 | .1647 | .55 | |
| 12 | 1/2 | 3/8 Copper Tube (ASTM B88) | 24 | 22 | 4 | 4 ... 12 | 16 | |
| | | | .94 | .87 | .16 | .1647 | .63 | |
| 14 | | 1/4 Pipe | 26 | 22 | 4 | 4 ... 12 | 18 | |
| | | | 1.02 | .87 | .16 | .1647 | .71 | |
| 15 | | | 28 | 22 | 4 | 4 ... 12 | 20 | |
| | | | 1.10 | .87 | .16 | .1647 | .79 | |
| 16 | 5/8 | 1/2 Copper Tube (ASTM B88) | 28 | 22 | 4 | 4 ... 12 | 20 | |
| | | | 1.10 | .87 | .16 | .1647 | .79 | |
| 18 | | | 30 | 22 | 4 | 4 ... 12 | 22 | |
| | | | 1.18 | .87 | .16 | .1647 | .87 | |
| 20 | 3/4 | | 32 | 22 | 4 | 4 ... 12 | 24 | |
| | | | 1.26 | .87 | .16 | .1647 | .94 | |
| 22 | 7/8 | 3/4 Copper Tube (ASTM B88) | 34 | 22 | 4 | 4 ... 12 | 26 | |
| | | | 1.34 | .87 | .16 | .1647 | 1.02 | |
| | | | 38 | 22 | 4 | 4 ... 12 | 30 | |
| 25 | 1 | | 1.50 | .87 | .16 | .1647 | 1.18 | |
| | | | 41 | 22 | 4 | 4 ... 12 | 33 | |
| 28 | | 1 Copper Tube (ASTM B88) | 1.61 | .87 | .16 | .1647 | 1.30 | |
| | | | 43 | 22 | 4 | 4 ... 12 | 34 | |
| 30 | | | 1.69 | .87 | .16 | .1647 | 1.39 | |
| | | | 48 | 22 | 4 | 4 ... 12 | 40 | |
| 35 | | 1-1/4 Copper Tube (ASTM B88) | 1.89 | .87 | .16 | .1647 | 1.57 | |
| | | | 51 | 22 | 4 | 4 ... 12 | 43 | |
| 38 | 1-1/2 | | 2.01 | .87 | .16 | .1647 | 1.70 | |
| | | | 55 | 22 | 4 | 4 ... 12 | 47 | |
| 42 | | 1-1/4 Pipe 1-1/2 Copper Tube (ASTM B88) | 2.17 | .87 | .16 | .1647 | 1.85 | |

Ordering Codes

Pipe / Tube Bushing

***SRF-*20-*PP**

- * Pipe / Tube Bushing SRF
- * Exact outside diameter Ø D1 (mm) 20
- * Material code (see below) PP

Standard Materials



Polypropylene
Colour: Natural colour
Material code: **PP**



Thermoplastic Elastomer (87 Shore-A)
Colour: Black
Material code: **SA**

See pages 154 / 155 for material properties and technical information.

Product Features

- Designed to centre the pipe or tube in a through-hole (e.g. for return lines entering the hydraulic reservoir)
- Vibration and noise absorbing element
- Available for all commonly used Metric and imperial pipe and tube diameters from 6 ... 42 mm and 1/4 ... 1-1/2 in
- Easy plug-in installation



LubeTeam Hydraulic S.r.l.

Administration and Headquarter:

Via Tufara Scautieri, 6

83018 - San Martino Valle Caudina (AV)

Office and Warehouse:

S.S. 7 Appia, Km. 237,00

82011 - Airola BN

ITALY

Tel. +39 0823 950 994

Fax +39 0823 412 546

www.lubeteam.it info@lubeteam.it

Italian VAT / C.F. e P.IVA: 01251720627

Follow us



This document is the property of LubeTeam Hydraulic S.r.l. All data reported here are for the exclusive use of the Receiver. Reproduction is not authorized without writing permission, in all or in part of the content of this document, in accordance to Law 633 art. 171, dated April 22, 1941.

Il presente documento è di proprietà della LubeTeam Hydraulic S.r.l. I dati riportati sono per esclusivo del destinatario. La riproduzione, di tutto o in parte, non è autorizzata senza permesso scritto secondo l'art. 171 della L. 633 del 22 Aprile 1941.