



CBF

Cartucce UNF-UN

Divisori di flusso



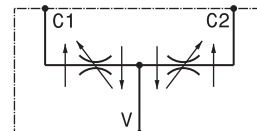
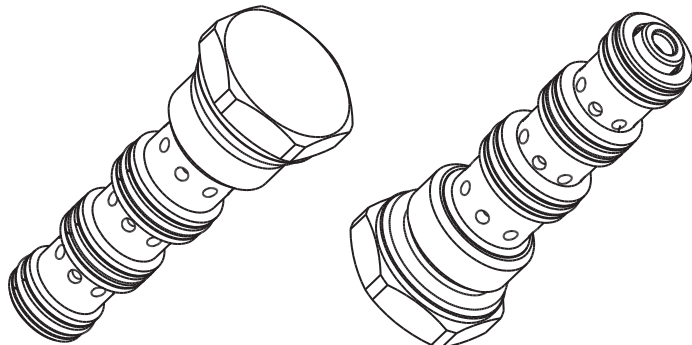
 HYDRAULIC
COMPONENTS
& FLUID CONTAMINATION
CONTROL



All trademarks belong to their respective owners; third party trademarks, product names, trade names, corporate names and company names mentioned may be trademarks of their respective owners or registered trademarks of other companies and are used for instructional purposes and for the benefit of the owner, without any end of Copyright infringement in force.

Tutti i marchi riportati appartengono ai legittimi proprietari; marchi di terzi, nomi di prodotti, nomi commerciali, nomi corporativi e società citati possono essere di proprietà dei rispettivi titolari o registrati da altre società e sono stati utilizzati a puro scopo esplicativo e a beneficio del possessore, senza alcun fine di violazione dei diritti di Copyright vigenti.

Divisore – riunificatore di flusso a cartuccia
Flow divider combiner – cartridge type
mod. DFR-10-C

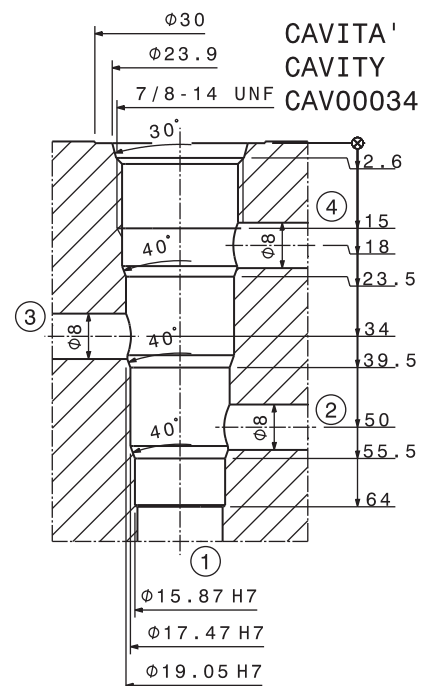
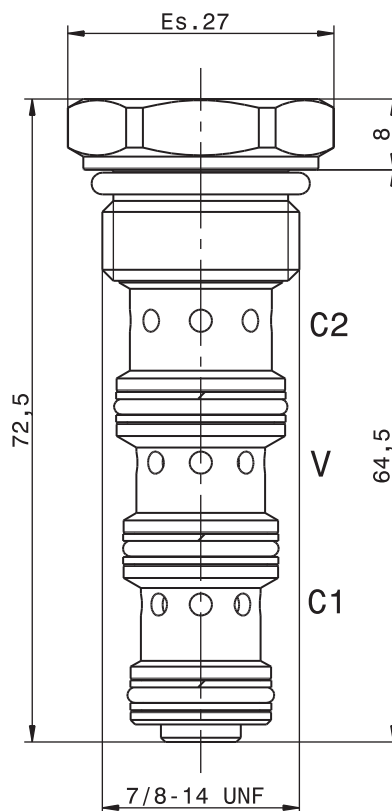


Portata massima Max flow	60 l/min 10.5 gpm
Pressione massima Max pressure	350 bar 5000 psi
Coppia di serraggio Installation torque	35 ÷ 40 Nm 26 ÷ 30 lbf ft
Errore max di divisione Flow accuracy of inlet flow	± 3%

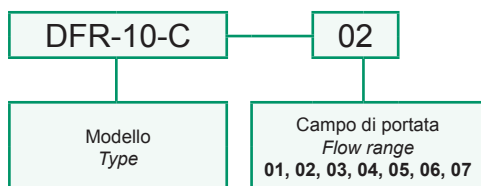
Dati e tarature ottenuti usando olio con viscosità 30 cSt a 50°C
Performances and calibrations are carried out by using hydraulic oil with 30 cSt viscosity at 50°C

Viscosità consigliate Recommended viscosity	10 ÷ 420 cSt
Temperature di lavoro Working temperature	-20 ÷ +90 °C
Filtrazione assoluta Absolute filtration	25 µ

Codice Code	Campo di portata Flow range
01	2 ÷ 4 l/min 0.5 ÷ 1 gpm
02	4 ÷ 7 l/min 1 ÷ 1.8 gpm
03	7 ÷ 12 l/min 1.8 ÷ 3.2 gpm
04	10 ÷ 16 l/min 2.7 ÷ 4.2 gpm
05	15 ÷ 25 l/min 4 ÷ 6.6 gpm
06	25 ÷ 40 l/min 6.6 ÷ 10.5 gpm
07	40 ÷ 60 l/min 10.5 ÷ 15.8 gpm



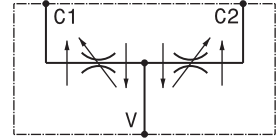
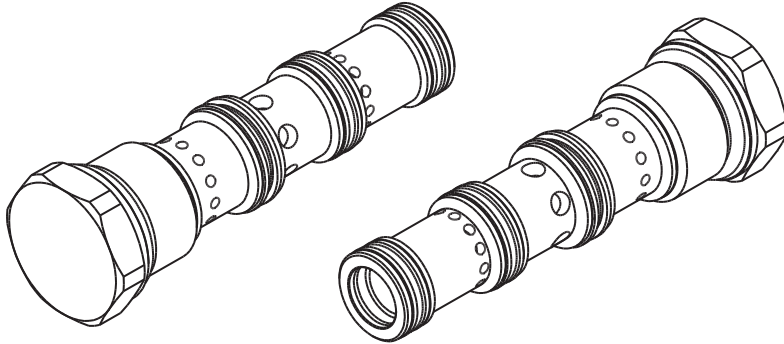
Sigla di ordinazione / Ordering code



For flow diagram see PRESSURE DROP FLOW DIVIDER (2)

I dati non sono impegnativi, CBF si riserva di apportare modifiche senza preavviso.
The specifications are not binding, CBF reserves the right to introduce modifications without notice.

Divisore – riunificatore di flusso a cartuccia
Flow divider combiner – cartridge type
mod. DFR-12-C

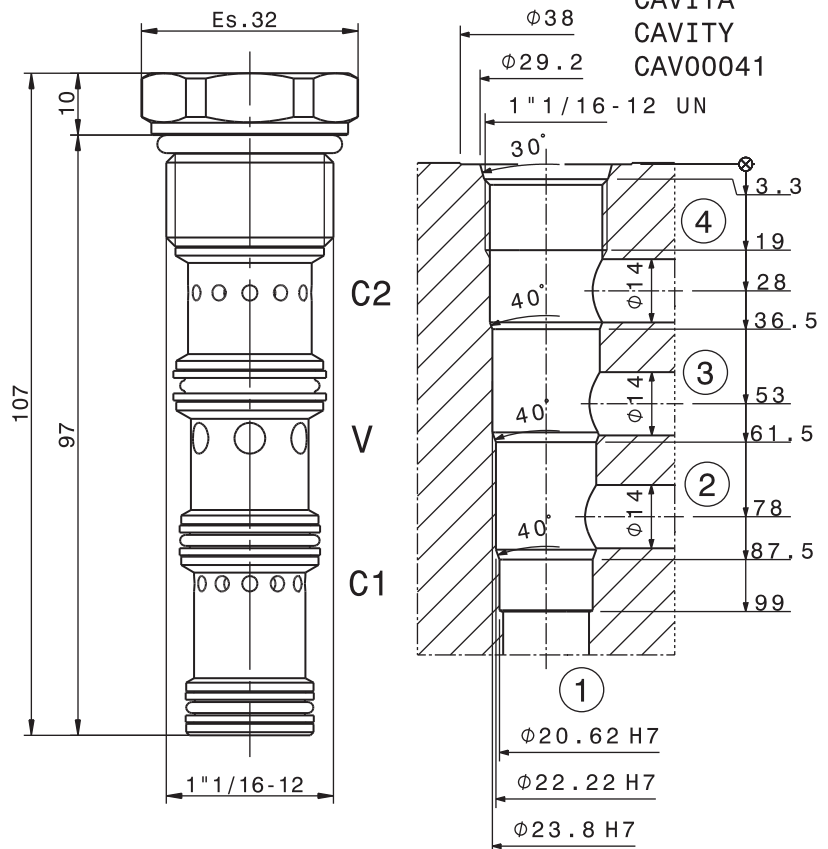


Portata massima Max flow	70 l/min 18.5 gpm
Pressione massima Max pressure	350 bar 5000 psi
Coppia di serraggio Installation torque	80 ÷ 100 Nm 60 ÷ 75 lbf ft
Errore max di divisione Flow accuracy of inlet flow	± 3%

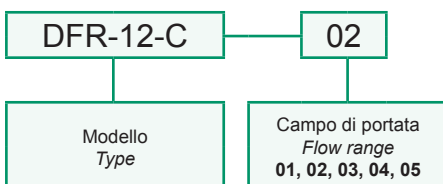
Dati e tarature ottenuti usando olio con viscosità 30 cSt a 50°C
Performances and calibrations are carried out by using hydraulic oil with 30 cSt viscosity at 50°C

Viscosità consigliate Recommended viscosity	10 ÷ 420 cSt
Temperature di lavoro Working temperature	-20 ÷ +90 °C
Filtrazione assoluta Absolute filtration	25 µ

Codice Code	Campo di portata Flow range
01	3 ÷ 6 l/min 0.8 ÷ 1.6 gpm
02	7 ÷ 12 l/min 1.8 ÷ 3.2 gpm
03	13 ÷ 25 l/min 3.4 ÷ 6.6 gpm
04	26 ÷ 40 l/min 6.9 ÷ 10.5 gpm
05	40 ÷ 70 l/min 10.5 ÷ 18.5 gpm

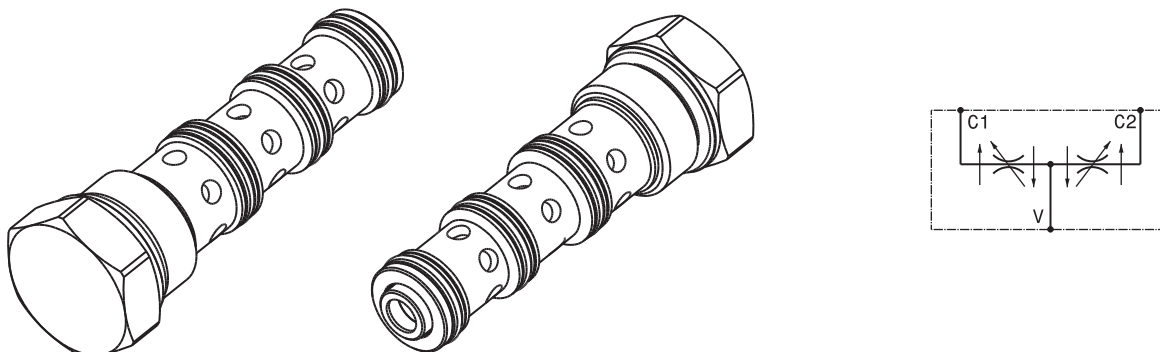


Sigla di ordinazione / Ordering code



I dati non sono impegnativi, **CBF** si riserva di apportare modifiche senza preavviso.
The specifications are not binding, **CBF** reserves the right to introduce modifications without notice.

Divisore – riunificatore di flusso a cartuccia
 Flow divider combiner – cartridge type
 mod. DFR-16-C

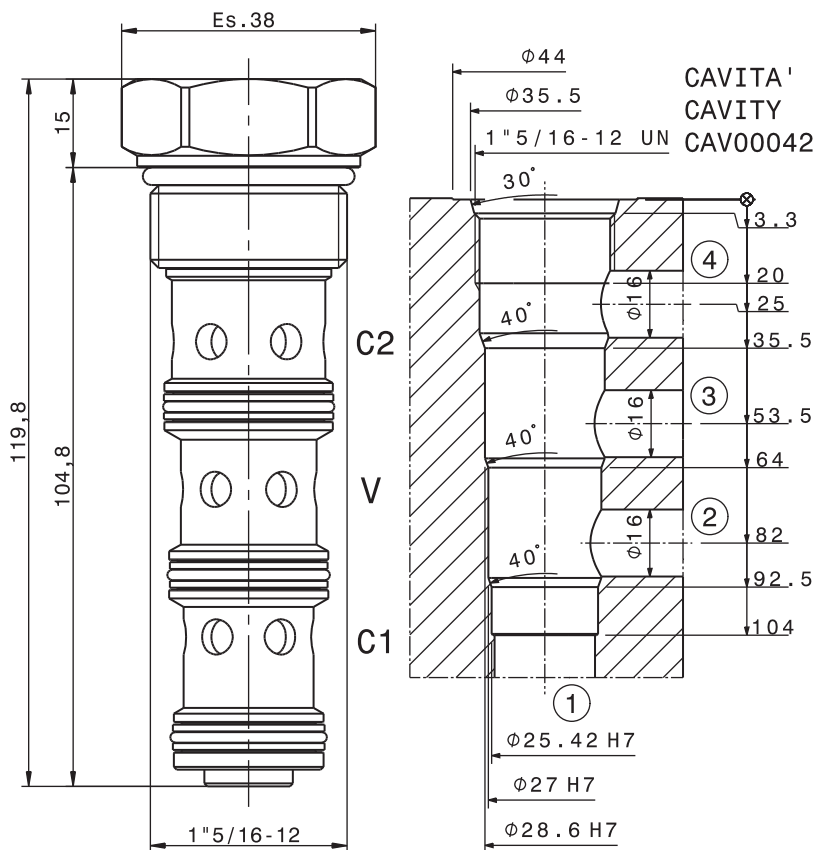


Portata massima Max flow	150 l/min 40 gpm
Pressione massima Max pressure	350 bar 5000 psi
Coppia di serraggio Installation torque	180 ÷ 210 Nm 135 ÷ 157 lbf ft
Errore max di divisione Flow accuracy of inlet flow	± 3%

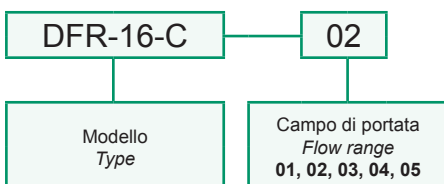
Dati e tarature ottenuti usando olio con viscosità 30 cSt a 50°C
 Performances and calibrations are carried out by using hydraulic oil with 30 cSt viscosity at 50°C

Viscosità consigliate Recommended viscosity	10 ÷ 420 cSt
Temperatura di lavoro Working temperature	-20 ÷ +90 °C
Filtrazione assoluta Absolute filtration	25 µ

Codice Code	Campo di portata Flow range
01	20 ÷ 32 l/min 5.3 ÷ 8.4 gpm
02	31 ÷ 50 l/min 8.2 ÷ 13 gpm
03	39 ÷ 64 l/min 10.3 ÷ 17 gpm
04	61 ÷ 100 l/min 16.1 ÷ 26 gpm
05	92 ÷ 150 l/min 24.3 ÷ 40 gpm

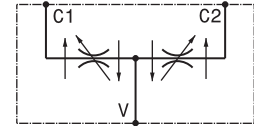
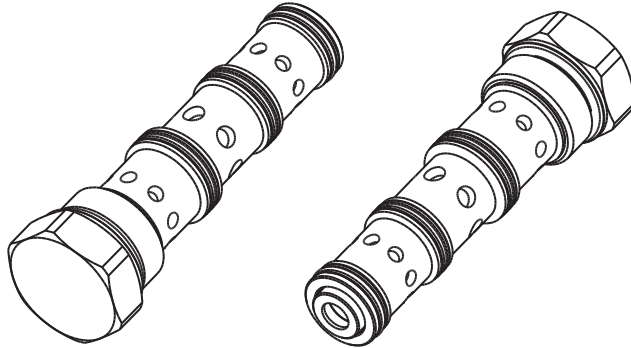


Sigla di ordinazione / Ordering code



I dati non sono impegnativi, CBF si riserva di apportare modifiche senza preavviso.
 The specifications are not binding, CBF reserves the right to introduce modifications without notice.

Divisore – riunificatore di flusso a cartuccia
 Flow divider combiner – cartridge type
 mod. DFR-20-C

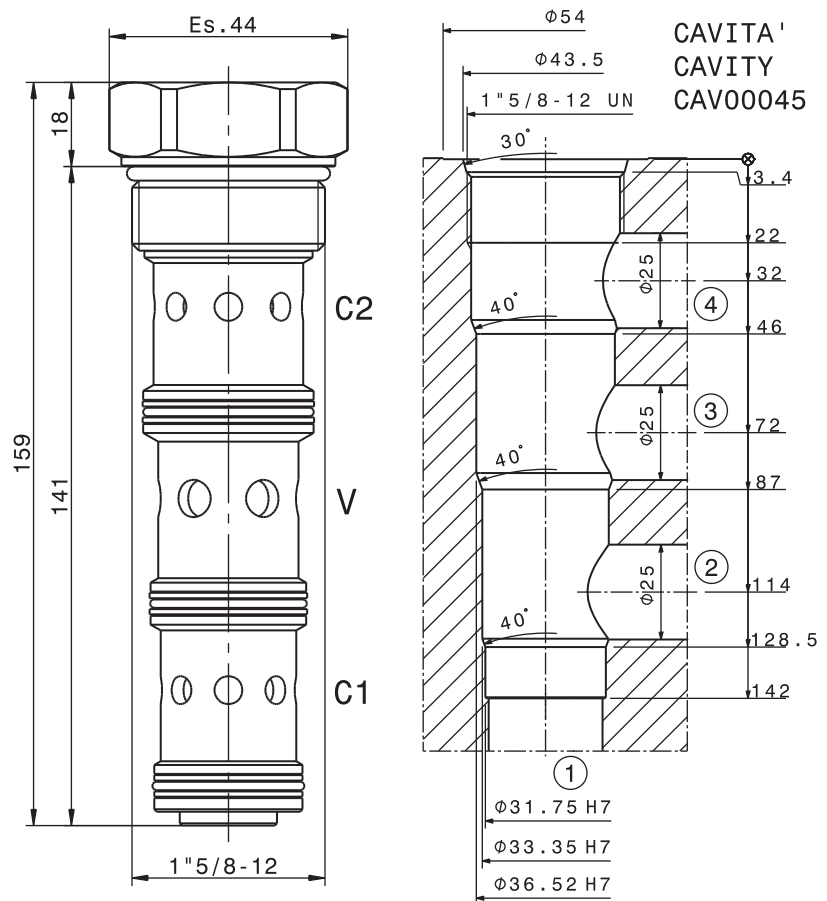


Portata massima Max flow	250 l/min 66 gpm
Pressione massima Max pressure	350 bar 5000 psi
Coppia di serraggio Installation torque	240 ÷ 260 Nm 180 ÷ 195 lbf ft
Errore max di divisione Flow accuracy of inlet flow	± 3%

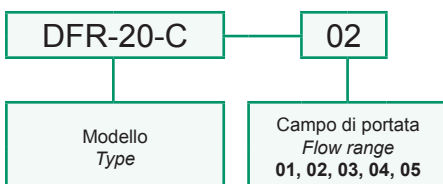
Dati e tarature ottenuti usando olio con viscosità 30 cSt a 50°C
 Performances and calibrations are carried out by using hydraulic oil with 30 cSt viscosity at 50°C

Viscosità consigliate Recommended viscosity	10 ÷ 420 cSt
Temperature di lavoro Working temperature	-20 ÷ +90 °C
Filtrazione assoluta Absolute filtration	25 µ

Codice Code	Campo di portata Flow range
01	40 ÷ 70 l/min 10.5 ÷ 18.5 gpm
02	60 ÷ 100 l/min 16 ÷ 26 gpm
03	90 ÷ 140 l/min 24 ÷ 37 gpm
04	120 ÷ 200 l/min 32 ÷ 53 gpm
05	150 ÷ 250 l/min 40 ÷ 66 gpm



Sigla di ordinazione / Ordering code



I dati non sono impegnativi, CBF si riserva di apportare modifiche senza preavviso.
 The specifications are not binding, CBF reserves the right to introduce modifications without notice.

LubeTeam Hydraulic S.r.l.

Administration and Headquarter:

Via Tufara Scautieri, 6

83018 - San Martino Valle Caudina (AV)

Office and Warehouse:

S.S. 7 Appia, Km. 237,00

82011 - Airola BN

ITALY

Tel. +39 0823 950 994

Fax +39 0823 412 546

www.lubeteam.it info@lubeteam.it

Italian VAT / C.F. e P.IVA: 01251720627

Follow us



This document is the property of LubeTeam Hydraulic S.r.l. All data reported here are for the exclusive use of the Receiver. Reproduction is not authorized without writing permission, in all or in part of the content of this document, in accordance to Law 633 art. 171, dated April 22, 1941.

Il presente documento è di proprietà della LubeTeam Hydraulic S.r.l. I dati riportati sono per esclusivo del destinatario. La riproduzione, di tutto o in parte, non è autorizzata senza permesso scritto secondo l'art. 171 della L. 633 del 22 Aprile 1941.