

CBF
Valvole overcenter
Semplice effetto



 HYDRAULIC
COMPONENTS
& FLUID CONTAMINATION
CONTROL

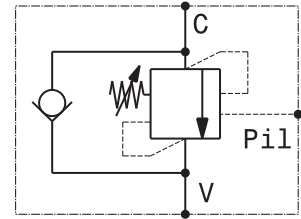
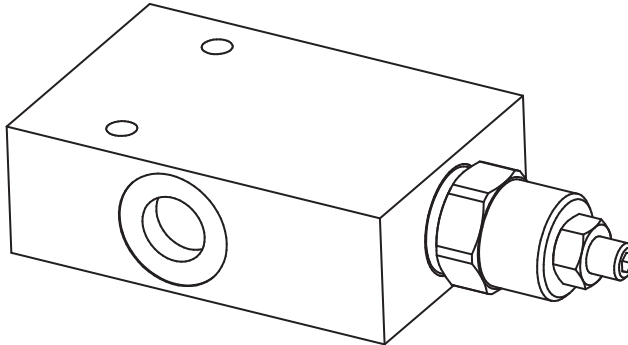


All trademarks belong to their respective owners; third party trademarks, product names, trade names, corporate names and company names mentioned may be trademarks of their respective owners or registered trademarks of other companies and are used for instructional purposes and for the benefit of the owner, without any end of Copyright infringement in force.

Tutti i marchi riportati appartengono ai legittimi proprietari; marchi di terzi, nomi di prodotti, nomi commerciali, nomi corporativi e società citati possono essere di proprietà dei rispettivi titolari o registrati da altre società e sono stati utilizzati a puro scopo esplicativo e a beneficio del possessore, senza alcun fine di violazione dei diritti di Copyright vigenti.

Valvola OVERCENTER semplice effetto con pilotaggio esterno
 Single effect COUNTERBALANCE valve with external pilot
 mod. OVC-SE

Corpo in alluminio
 Aluminium body



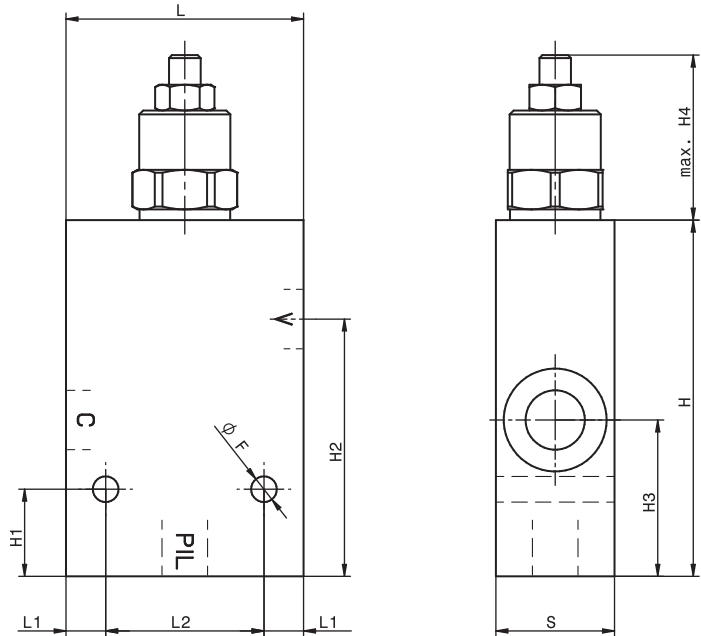
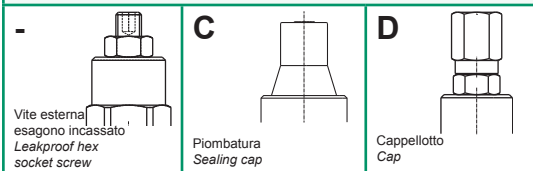
Pressione massima Max pressure	350 bar 5000 psi
Rapporto di pilotaggio standard Standard pilot ratio	4,25:1 (G3/8" - G1/2"), 4:1 (G3/4" - G1")
Rapporto di pilotaggio a richiesta Pilot ratio upon request	3:1 8:1 10:1
Dati e tarature ottenuti usando olio con viscosità 30 cSt a 50°C Performances and calibrations are carried out by using hydraulic oil with 30 cSt viscosity at 50°C	
Viscosità consigliate Recommended viscosity	10 ÷ 420 cSt
Temperature di lavoro Working temperature	-20 ÷ +90 °C
Filtrazione assoluta Absolute filtration	25 µ

Modello Type	V, C	Pil	Portata max Max. flow
OVC-SE-38	3/8"GAS	1/4"GAS	40 l/min 10.5 gpm
OVC-SE-12	1/2"GAS	1/4"GAS	70 l/min 18 gpm
OVC-SE-34	3/4"GAS	1/4"GAS	110 l/min 26 gpm
OVC-SE-10	1"GAS	1/4"GAS	120 l/min 32 gpm

Taratura Setting
 La valvola deve essere tarata almeno 1.3 volte la massima pressione indotta dal carico
 The valve must be set at least 1.3 times maximum load induced pressure

Codice Code	Taratura standard Standard setting (Q=5 l/min)	Campo di taratura Adj. Pressure range	Colore molla Spring color
01	100 bar 1450 psi	20+200 bar 290+2900 psi	Bianco White
02	280 bar 4000 psi	50+350 bar 725+5000 psi	Nero Black

Regolazioni - Adjustments



Modello Type	L	H	S	L1	L2	H1	H2	H3	H4	F
OVC-SE-38	60	90	30	10	40	22	65	39.5	42	6.5
OVC-SE-12	60	90	30	10	40	22	65	39.5	42	6.5
OVC-SE-34	70	110	40	10	50	27.5	85	50	46	8.5
OVC-SE-10	70	110	50	10	50	20	81	50	46	8.5

Sigla di ordinazione / Ordering code

OVC-SE-38 - 02 -

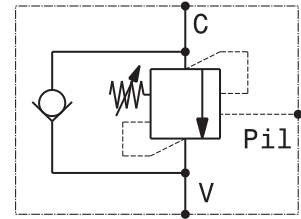
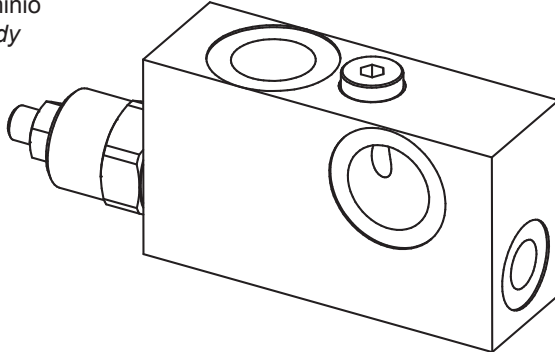
Modello Type	Codice taratura Setting code 01, 02	Codice regolazione Adjustment code -, C, D
-----------------	---	--

For flow diagram see
 PRESSURE DROP OVERCENTER VALVES (8) +
 PRESSURE DROP OVERCENTER VALVES (9)

I dati non sono impegnativi, CBF si riserva di apportare modifiche senza preavviso.
 The specifications are not binding, CBF reserves the right to introduce modifications without notice.

Valvola OVERCENTER semplice effetto con pilotaggio esterno flangiabile con vite cava
 Single effect COUNTERBALANCE valve with external pilot – nipple screw flangeable
 mod. OVC-SE-C

Corpo in alluminio
 Aluminium body



Pressione massima Max pressure	350 bar 5000 psi
Rapporto di pilotaggio standard Standard pilot ratio	4,25:1
Rapporto di pilotaggio a richiesta Pilot ratio upon request	3:1 8:1 10:1

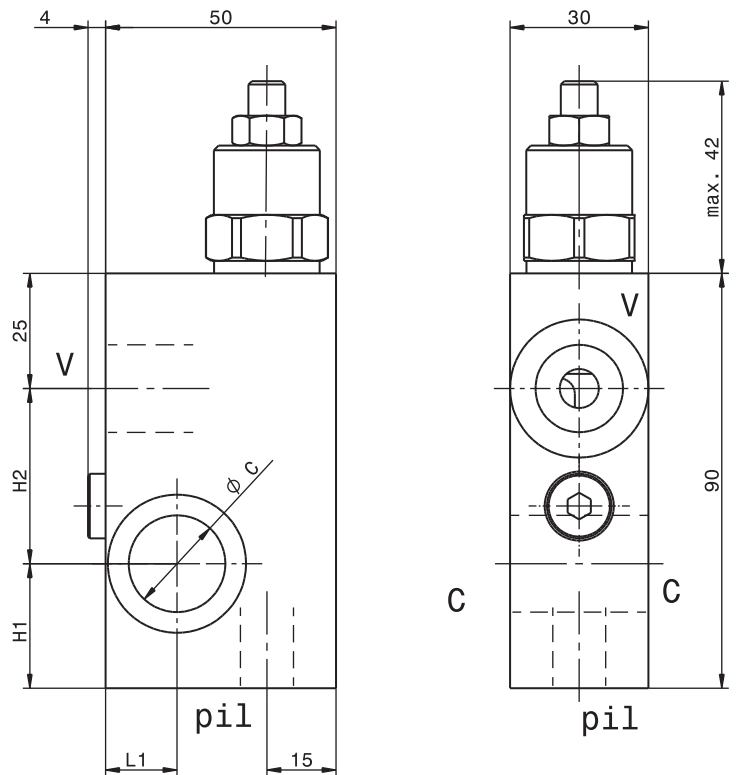
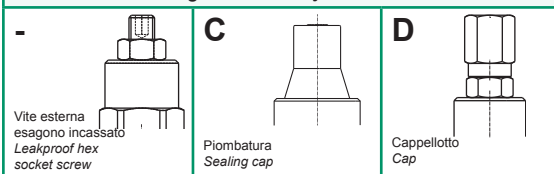
Modello Type	V GAS	Pil GAS	C Ø	H1	H2	L1	Portata max Max. flow
OVC-SE-C-14	1/4"	1/4"	13	31	34	15	25 l/min 6.5 gpm
OVC-SE-C-38	3/8"	1/4"	17	29	36	15	40 l/min 10.5 gpm
OVC-SE-C-12	1/2"	1/4"	21	27	38	15.5	70 l/min 18 gpm

Dati e tarature ottenuti usando olio con viscosità 30 cSt a 50°C
 Performances and calibrations are carried out by using hydraulic oil with 30 cSt viscosity at 50°C

Viscosità consigliate Recommended viscosity	10 ÷ 420 cSt
Temperature di lavoro Working temperature	-20 ÷ +90 °C
Filtrazione assoluta Absolute filtration	25 µ

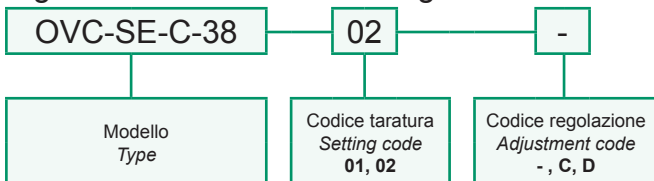
Taratura Setting	La valvola deve essere tarata almeno 1.3 volte la massima pressione indotta dal carico The valve must be set at least 1.3 times maximum load induced pressure		
Codice Code	Taratura standard Standard setting (Q=5 l/min)	Campo di taratura Adj. Pressure range	Colore molla Spring color
01	100 bar 1450 psi	20÷200 bar 290÷2900 psi	Bianco White
02	280 bar 4000 psi	50÷350 bar 725÷5000 psi	Nero Black

Regolazioni - Adjustments



Vite cava disponibile a richiesta Nipple screw available upon request	Modello Type	Codice di ordinazione Ordering Code
	OVC-SEC-14	KITV0012
	OVC-SEC-38	KITV0002
	OVC-SEC-12	KITV0003

Sigla di ordinazione / Ordering code

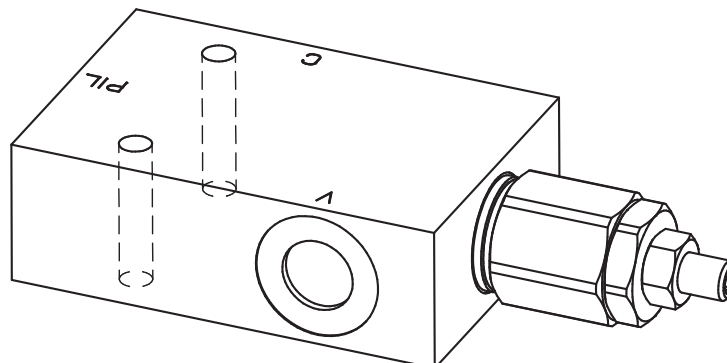


For flow diagram see
 PRESSURE DROP OVERCENTER VALVES (12)

I dati non sono impegnativi, CBF si riserva di apportare modifiche senza preavviso.
 The specifications are not binding, CBF reserves the right to introduce modifications without notice.

Valvola OVERCENTER semplice effetto compensata in pressione con pilotaggio esterno
 Single effect COUNTERBALANCE pressure compensated valve with external pilot

mod. OVC-SE-CC



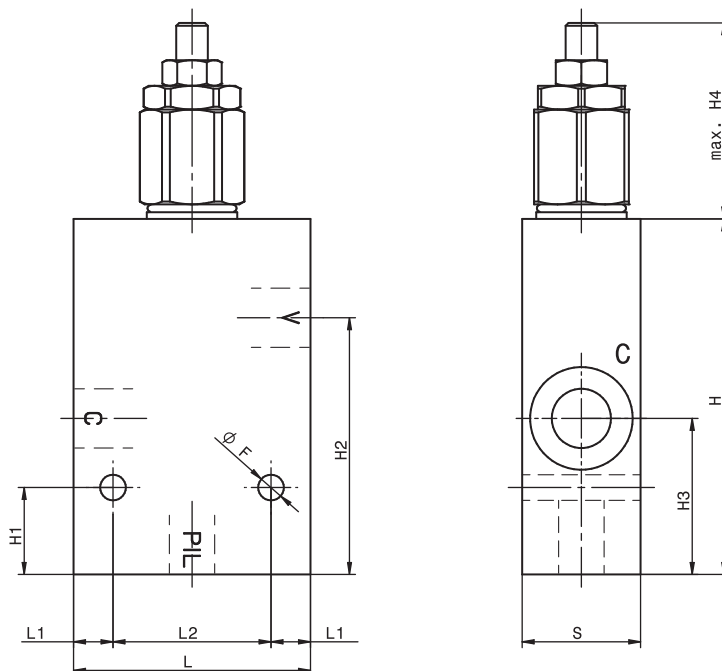
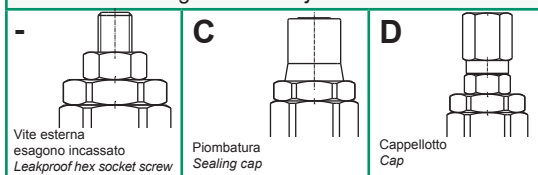
Corpo in alluminio
 Aluminium body

Pressione massima Max pressure	350 bar 5000 psi
Rapporto di pilotaggio standard Standard pilot ratio	4,25:1 (G3/8" - G1/2"), 4:1 (G3/4" - G1")
Rapporto di pilotaggio a richiesta Pilot ratio upon request	3:1 8:1 10:1
Dati e tarature ottenuti usando olio con viscosità 30 cSt a 50°C Performances and calibrations are carried out by using hydraulic oil with 30 cSt viscosity at 50°C	
Viscosità consigliate Recommended viscosity	10 ÷ 420 cSt
Temperature di lavoro Working temperature	-20 ÷ +90 °C
Filtrazione assoluta Absolute filtration	25 µ

Modello Type	V, C	Pil	Portata max Max. flow
OVC-SE-CC-38	3/8" GAS	1/4" GAS	40 l/min 10.5 gpm
OVC-SE-CC-12	1/2" GAS	1/4" GAS	70 l/min 18 gpm
OVC-SE-CC-34	3/4" GAS	1/4" GAS	110 l/min 26 gpm
OVC-SE-CC-10	1" GAS	1/4" GAS	120 l/min 32 gpm

Taratura Setting	La valvola deve essere tarata almeno 1.3 volte la massima pressione indotta dal carico The valve must be set at least 1.3 times maximum load induced pressure		
	Codice Code	Taratura standard Standard setting (Q=5 l/min)	Campo di taratura Adj. Pressure range
01	100 bar 1450 psi	20+200 bar 290+2900 psi	Bianco White
02	280 bar 4000 psi	50+350 bar 725+5000 psi	Nero Black

Regolazioni - Adjustments



Modello Type	L	H	S	L1	L2	H1	H2	H3	H4	F
OVC-SE-CC-38	60	90	30	10	40	22	65	39.5	50	6.5
OVC-SE-CC-12	60	90	30	10	40	22	65	39.5	50	6.5
OVC-SE-CC-34	70	110	40	10	50	27.5	85	50	58	8.5
OVC-SE-CC-10	70	110	50	10	50	20	81	50	58	8.5

Sigla di ordinazione / Ordering code

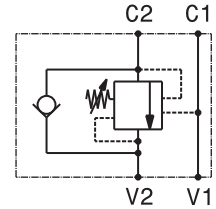
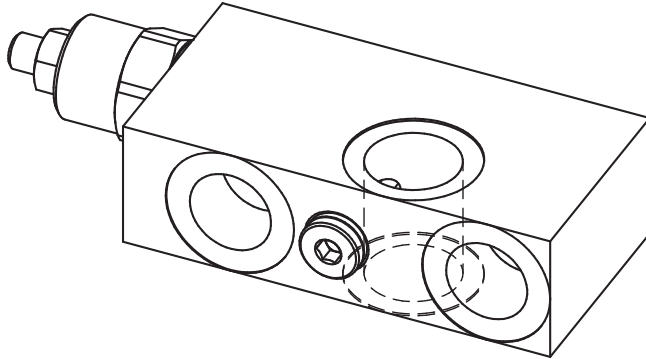
OVC-SE-CC-38 - 02 -

Modello Type	Codice taratura Setting code 01, 02	Codice regolazione Adjustment code -, C, D
-----------------	---	--

For flow diagram see
 PRESSURE DROP OVERCENTER VALVES (8) +
 PRESSURE DROP OVERCENTER VALVES (9)

I dati non sono impegnativi, CBF si riserva di apportare modifiche senza preavviso.
 The specifications are not binding, CBF reserves the right to introduce modifications without notice.

Valvola OVERCENTER semplice effetto in linea flangiabile con vite cava
In line, single effect COUNTERBALANCE valve – nipple screw flangeable
mod. OVC-SE-CL

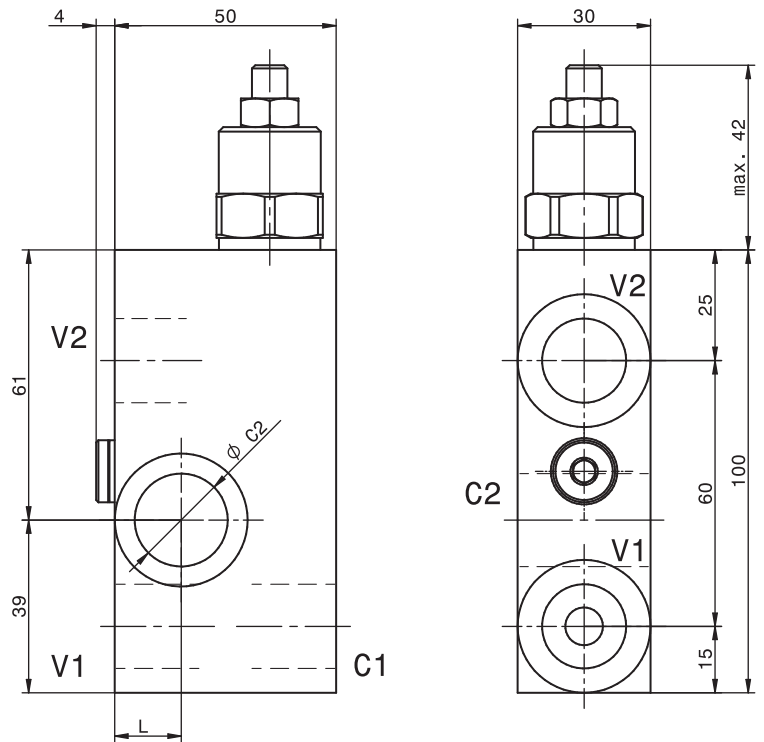


Pressione massima <i>Max pressure</i>	350 bar 5000 psi
Rapporto di pilotaggio standard <i>Standard pilot ratio</i>	4,25:1
Rapporto di pilotaggio a richiesta <i>Pilot ratio upon request</i>	3:1 8:1 10:1

Dati e tarature ottenuti usando olio con viscosità 30 cSt a 50°C <i>Performances and calibrations are carried out by using hydraulic oil with 30 cSt viscosity at 50°C</i>	
Viscosità consigliate <i>Recommended viscosity</i>	10 ÷ 420 cSt
Temperature di lavoro <i>Working temperature</i>	-20 ÷ +90 °C
Filtrazione assoluta <i>Absolute filtration</i>	25 µ

Modello <i>Type</i>	C1, V1, V2	C Ø	L	Portata max <i>Max. flow</i>
OVC-SE-CL-38	3/8"GAS	17	15	40 l/min 10.5 gpm
OVC-SE-CL-12	1/2"GAS	21	17	70 l/min 18 gpm

Taratura <i>Setting</i>	La valvola deve essere tarata almeno 1.3 volte la massima pressione indotta dal carico <i>The valve must be set at least 1.3 times maximum load induced pressure</i>		
Codice <i>Code</i>	Taratura standard <i>Standard setting (Q=5 l/min)</i>	Campo di taratura <i>Adj. Pressure range</i>	Colore molla <i>Spring color</i>
01	100 bar 1450 psi	20÷200 bar 290÷2900 psi	Bianco White
02	280 bar 4000 psi	50÷350 bar 725÷5000 psi	Nero Black

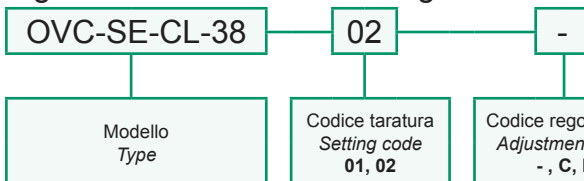


Vite cava disponibile a richiesta Nipple screw available upon request	Modello <i>Type</i>	Codice di ordinazione <i>Ordering Type</i>
	OVC-SE-CL-38	KITV0002
	OVC-SE-CL-12	KITV0003

Regolazioni - Adjustments

- Vite esterna esagono incassato <i>Leakproof hex socket screw</i>	C Piombatura <i>Sealing cap</i>	D Cappello <i>Cap</i>
---	---------------------------------------	-----------------------------

Sigla di ordinazione / Ordering code

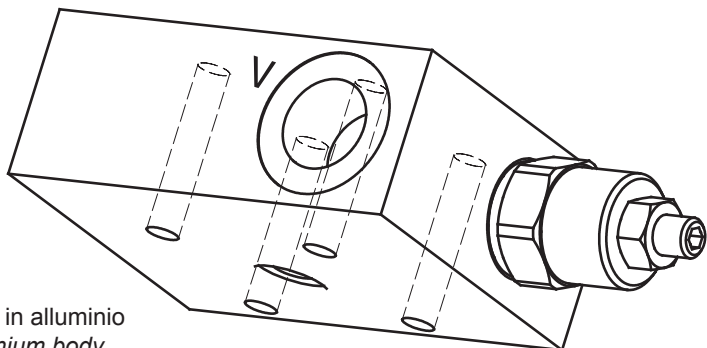


For flow diagram see
 PRESSURE DROP OVERCENTER VALVES (12)

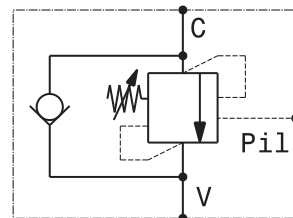
I dati non sono impegnativi, **CBF** si riserva di apportare modifiche senza preavviso.
The specifications are not binding, CBF reserves the right to introduce modifications without notice.

Valvola OVERCENTER semplice effetto con pilotaggio esterno flangiabile
 Flange mounted, single effect COUNTERBALANCE valve with external pilot

mod. OVC-SE-F38



Corpo in alluminio
 Aluminium body

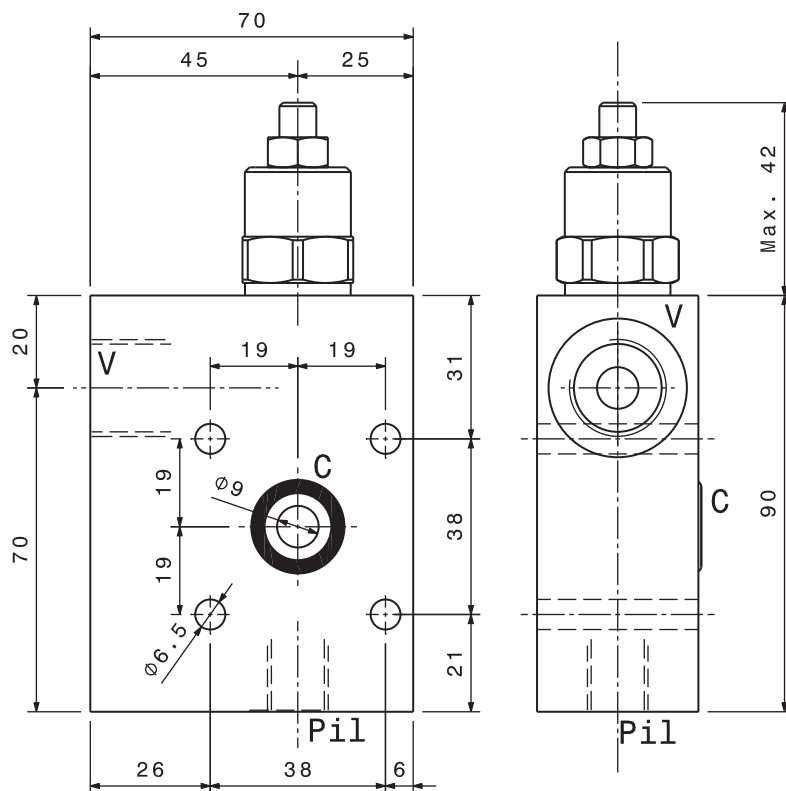


Pressione massima Max pressure	350 bar 5000 psi
Rapporto di pilotaggio standard Standard pilot ratio	4,25:1
Rapporto di pilotaggio a richiesta Pilot ratio upon request	3:1 8:1 10:1

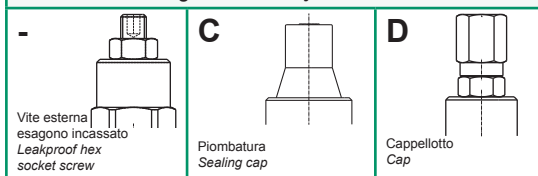
Dati e tarature ottenuti usando olio con viscosità 30 cSt a 50°C Performances and calibrations are carried out by using hydraulic oil with 30 cSt viscosity at 50°C	
Viscosità consigliate Recommended viscosity	10 ÷ 420 cSt
Temperature di lavoro Working temperature	-20 ÷ +90 °C
Filtrazione assoluta Absolute filtration	25 µ

Modello Type	V	Pil	Portata max Max. flow
OVC-SE-F38-38	3/8" GAS	1/4" GAS	40 l/min 10.5 gpm
OVC-SE-F38-12	1/2" GAS	1/4" GAS	60 l/min 16 gpm

Taratura Setting	La valvola deve essere tarata almeno 1.3 volte la massima pressione indotta dal carico The valve must be set at least 1.3 times maximum load induced pressure		
Codice Code	Taratura standard Standard setting (Q=5 l/min)	Campo di taratura Adj. Pressure range	Colore molla Spring color
01	100 bar 1450 psi	20÷200 bar 290÷2900 psi	Bianco White
02	280 bar 4000 psi	50÷350 bar 725÷5000 psi	Nero Black



Regolazioni - Adjustments



Sigla di ordinazione / Ordering code

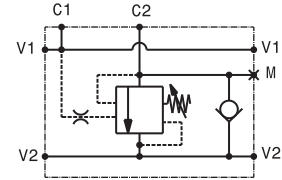
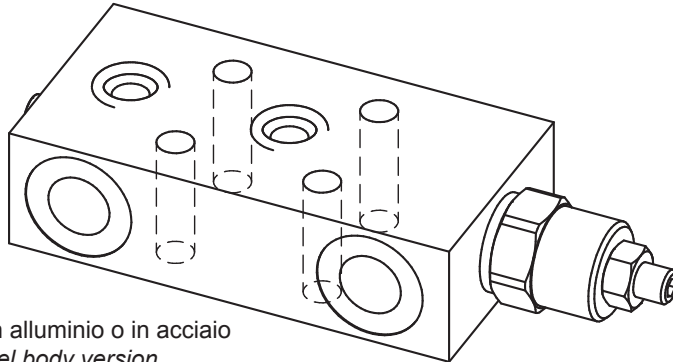
OVC-SE-F38-38 - 02 -

Modello Type	Codice taratura Setting code 01, 02	Codice regolazione Adjustment code -, C, D
-----------------	---	--

For flow diagram see
 PRESSURE DROP OVERCENTER VALVES (8)

I dati non sono impegnativi, CBF si riserva di apportare modifiche senza preavviso.
 The specifications are not binding, CBF reserves the right to introduce modifications without notice.

Valvola OVERCENTER semplice effetto flangiabile
Flange mounted, single effect COUNTERBALANCE valve
mod. OVC-SE-F2-PST



Versione corpo in alluminio o in acciaio
Aluminium or steel body version

Pressione massima Max pressure	350 bar 5000 psi
Rapporto di pilotaggio standard Standard pilot ratio	4,25:1
Rapporto di pilotaggio a richiesta Pilot ratio upon request	3:1 8:1 10:1

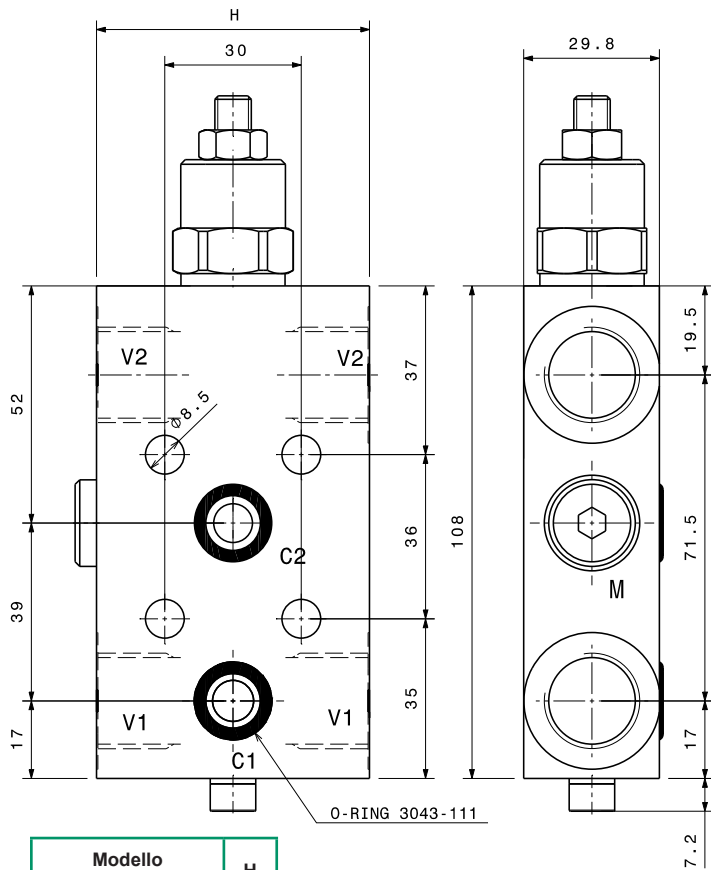
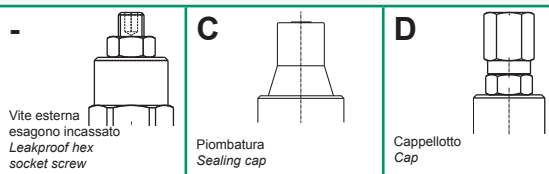
Dati e tarature ottenuti usando olio con viscosità 30 cSt a 50°C
Performances and calibrations are carried out by using hydraulic oil with 30 cSt viscosity at 50°C

Viscosità consigliate Recommended viscosity	10 ÷ 420 cSt
Temperature di lavoro Working temperature	-20 ÷ +90 °C
Filtrazione assoluta Absolute filtration	25 µ

Modello Type	V1, V2	M	Portata max Max. flow
OVC-SE-F2-PST-38	3/8" GAS	1/4" GAS	40 l/min 10.5 gpm
OVC-SE-F2-PST-12	1/2" GAS	1/4" GAS	70 l/min 18.5 gpm

Taratura Setting	La valvola deve essere tarata almeno 1.3 volte la massima pressione indotta dal carico The valve must be set at least 1.3 times maximum load induced pressure		
Codice Code	Taratura standard Standard setting (Q=5 l/min)	Campo di taratura Adj. Pressure range	Colore molla Spring color
01	100 bar 1450 psi	20÷200 bar 290÷2900 psi	Bianco White
02	280 bar 4000 psi	50÷350 bar 725÷5000 psi	Nero Black

Regolazioni - Adjustments



Modello Type	H
OVC-SE-F2-PST38	55
OVC-SE-F2-PST12	60

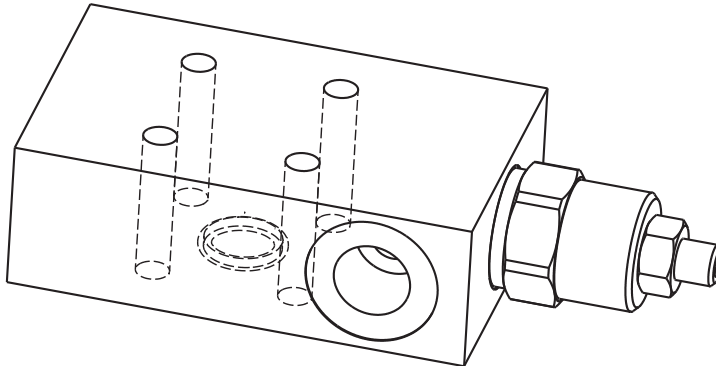
Sigla di ordinazione / Ordering code

OVC-SE-F2-PST38 — 02 — — —

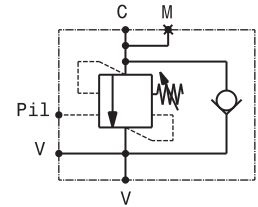
Modello Type	Codice taratura Setting code 01, 02	Codice regolazione Adjustment code -, C, D	- Alluminio / Aluminium A Acciaio / Steel	For flow diagram see PRESSURE DROP OVERCENTER VALVES (8)
-----------------	---	--	--	---

I dati non sono impegnativi, CBF si riserva di apportare modifiche senza preavviso.
The specifications are not binding, CBF reserves the right to introduce modifications without notice.

Valvola OVERCENTER semplice effetto con pilotaggio esterno flangiabile - acciaio
Flange mounted, single effect COUNTERBALANCE valve with external pilot - steel
mod. OVC-SE-F-A



Corpo in acciaio
 Steel body



Pressione massima <i>Max pressure</i>	350 bar 5000 psi
Rapporto di pilotaggio standard <i>Standard pilot ratio</i>	4,25:1
Rapporto di pilotaggio a richiesta <i>Pilot ratio upon request</i>	3:1 8:1 10:1

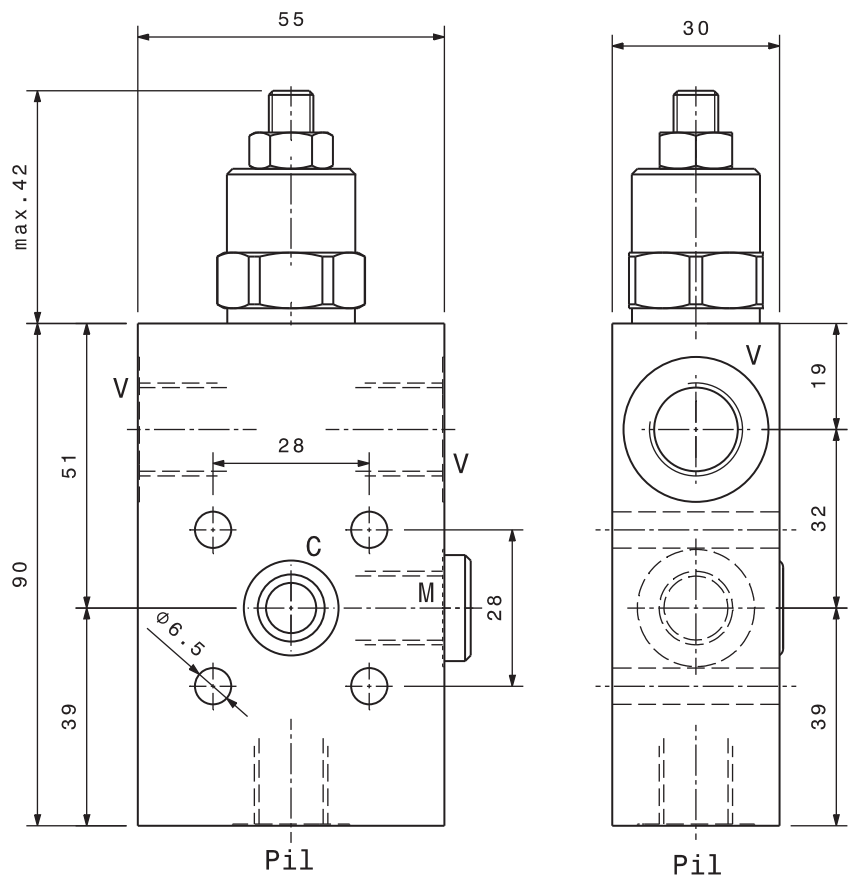
Dati e tarature ottenuti usando olio con viscosità 30 cSt a 50°C <i>Performances and calibrations are carried out by using hydraulic oil with 30 cSt viscosity at 50°C</i>	
Viscosità consigliate <i>Recommended viscosity</i>	10 ÷ 420 cSt
Temperature di lavoro <i>Working temperature</i>	-20 ÷ +90 °C
Filtrazione assoluta <i>Absolute filtration</i>	25 µ

Modello <i>Type</i>	V	Pil	Portata max <i>Max. flow</i>
OVC-SE-F-38-A	3/8" GAS	1/4" GAS	40 l/min 10.5 gpm
OVC-SE-F-12-A	1/2" GAS	1/4" GAS	60 l/min 16 gpm

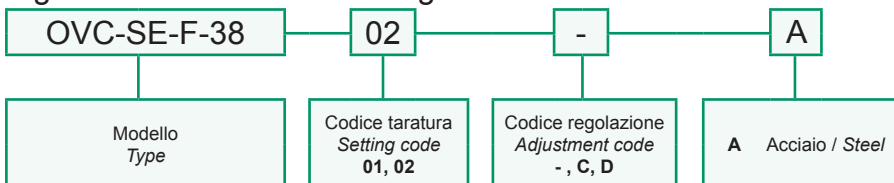
Taratura <i>Setting</i>	La valvola deve essere tarata almeno 1.3 volte la massima pressione indotta dal carico <i>The valve must be set at least 1.3 times maximum load induced pressure</i>		
Codice <i>Code</i>	Taratura standard <i>Standard setting (Q=5 l/min)</i>	Campo di taratura <i>Adj. Pressure range</i>	Colore molla <i>Spring color</i>
01	100 bar 1450 psi	20÷200 bar 290÷2900 psi	Bianco White
02	280 bar 4000 psi	50÷350 bar 725÷5000 psi	Nero Black

Regolazioni - *Adjustments*

- Vite esterna esagono incassato <i>Leakproof hex socket screw</i>	C Piomatura <i>Sealing cap</i>	D Cappello <i>Cap</i>
--	--------------------------------------	-----------------------------



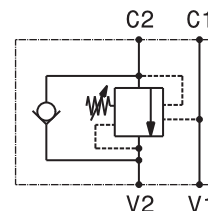
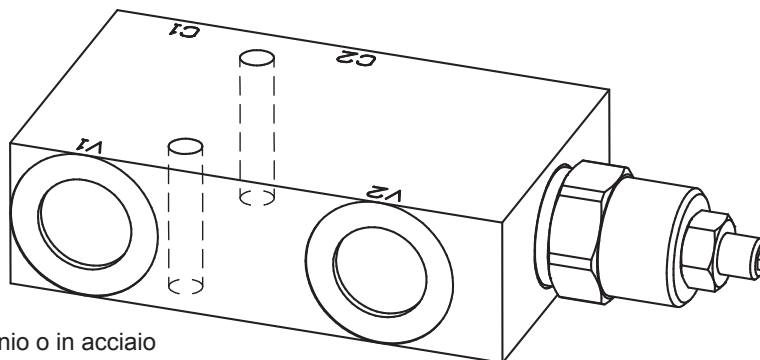
Sigla di ordinazione / *Ordering code*



For flow diagram see
 PRESSURE DROP OVERCENTER VALVES (8)

I dati non sono impegnativi, CBF si riserva di apportare modifiche senza preavviso.
The specifications are not binding, CBF reserves the right to introduce modifications without notice.

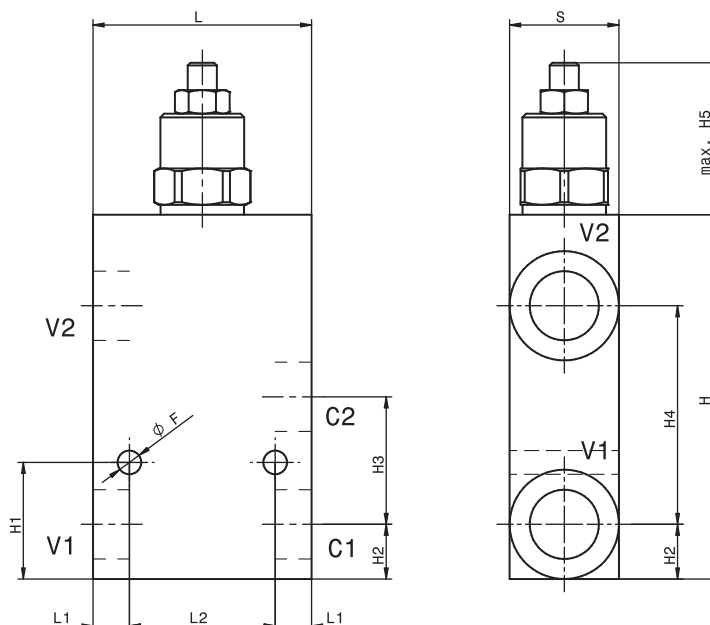
Valvola OVERCENTER semplice effetto in linea
In line, single effect COUNTERBALANCE valve
 mod. OVC-SE-L



Versione corpo in alluminio o in acciaio
Aluminium or steel body version

Pressione massima <i>Max pressure</i>	350 bar 5000 psi
Rapporto di pilotaggio standard <i>Standard pilot ratio</i>	4,25:1 (G3/8" - G1/2"), 4:1 (G3/4" - G1")
Rapporto di pilotaggio a richiesta <i>Pilot ratio upon request</i>	3:1 8:1 10:1
Dati e tarature ottenuti usando olio con viscosità 30 cSt a 50°C <i>Performances and calibrations are carried out by using hydraulic oil with 30 cSt viscosity at 50°C</i>	
Viscosità consigliate <i>Recommended viscosity</i>	10 ÷ 420 cSt
Temperature di lavoro <i>Working temperature</i>	-20 ÷ +90 °C
Filtrazione assoluta <i>Absolute filtration</i>	25 µ

Modello <i>Type</i>	V1, V2 C1, C2	Portata max <i>Max. flow</i>
OVC-SE-L-38	3/8" GAS	40 l/min 10.5 gpm
OVC-SE-L-12	1/2" GAS	70 l/min 18 gpm
OVC-SE-L-34	3/4" GAS	110 l/min 26 gpm
OVC-SE-L-10	1" GAS	120 l/min 32 gpm



Taratura <i>Setting</i>			
Codice <i>Code</i>	Taratura standard <i>Standard setting</i> (Q=5 l/min)	Campo di taratura <i>Adj. Pressure range</i>	Colore molla <i>Spring color</i>
01	100 bar 1450 psi	20+200 bar 290+2900 psi	Bianco White
02	280 bar 4000 psi	50+350 bar 725+5000 psi	Nero Black

Modello <i>Type</i>	L	H	S	L1	L2	H1	H2	H3	H4	H5	F
OVC-SE-L-38	60	100	30	10	40	32	15	35	60	42	6.5
OVC-SE-L-12	60	100	30	10	40	32	15	35	60	42	6.5
OVC-SE-L-34	70	125	40	10	50	42.5	20	45	80	48	8.5
OVC-SE-L-10	70	140	50	10	50	51	25	52	90	48	8.5

Regolazioni - *Adjustments*

Vite esterna esagono incassato
Leakproof hex socket screw

Piombatura
Sealing cap

Cappellotto
Cap

Sigla di ordinazione / *Ordering code*

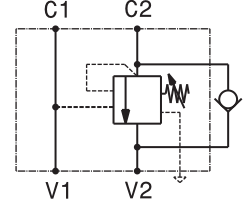
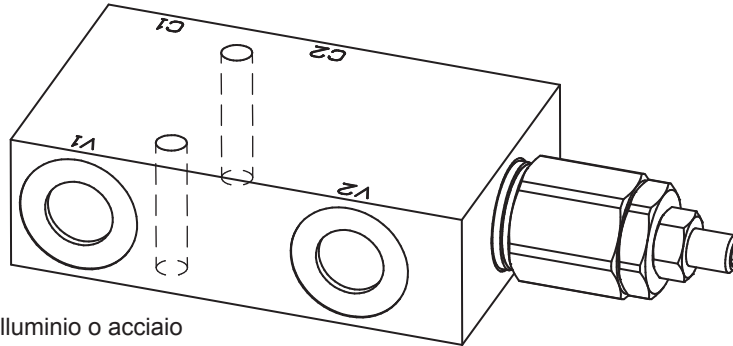
OVC-SE-L-38 - 02 - - -

Modello <i>Type</i>	Codice taratura <i>Setting code</i> 01, 02	Codice regolazione <i>Adjustment code</i> -, C, D	- Alluminio / <i>Aluminium</i> A Acciaio / <i>Steel</i>
------------------------	--	---	--

For flow diagram see
 PRESSURE DROP OVERCENTER VALVES (8) +
 PRESSURE DROP OVERCENTER VALVES (9)

I dati non sono impegnativi, CBF si riserva di apportare modifiche senza preavviso.
The specifications are not binding, CBF reserves the right to introduce modifications without notice.

Valvola OVERCENTER compensata in pressione semplice effetto in linea
In line, single effect pressure compensated COUNTERBALANCE valve
mod. OVC-SE-L-CC

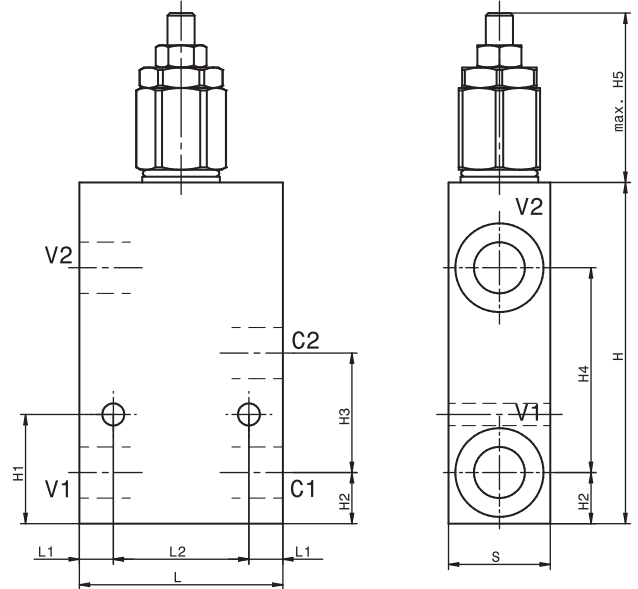


Versione con corpo in alluminio o acciaio
Aluminium or steel body version

Pressione massima <i>Max pressure</i>	350 bar 5000 psi
Rapporto di pilotaggio standard <i>Standard pilot ratio</i>	4,25:1 (G3/8" - G1/2"), 4:1 (G3/4" - G1")
Rapporto di pilotaggio a richiesta <i>Pilot ratio upon request</i>	3:1 8:1 10:1
Dati e tarature ottenuti usando olio con viscosità 30 cSt a 50°C <i>Performances and calibrations are carried out by using hydraulic oil with 30 cSt viscosity at 50°C</i>	
Viscosità consigliate <i>Recommended viscosity</i>	10 ÷ 420 cSt
Temperature di lavoro <i>Working temperature</i>	-20 ÷ +90 °C
Filtrazione assoluta <i>Absolute filtration</i>	25 µ

Modello <i>Type</i>	V1, V2 C1, C2	Portata max <i>Max. flow</i>
OVC-SE-L-CC-38	3/8"GAS	40 l/min 10.5 gpm
OVC-SE-L-CC-12	1/2"GAS	70 l/min 18 gpm
OVC-SE-L-CC-34	3/4"GAS	110 l/min 26 gpm
OVC-SE-L-CC-10	1"GAS	120 l/min 32 gpm

Taratura Setting			
La valvola deve essere tarata almeno 1.3 volte la massima pressione indotta dal carico <i>The valve must be set at least 1.3 times maximum load induced pressure</i>			
Codice <i>Code</i>	Taratura standard <i>Standard setting (Q=5 l/min)</i>	Campo di taratura <i>Adj. Pressure range</i>	Colore molla <i>Spring color</i>
01	100 bar 1450 psi	20+200 bar 290+2900 psi	Bianco White
02	280 bar 4000 psi	50+350 bar 725+5000 psi	Nero Black



Modello <i>Type</i>	L	H	S	L1	L2	H1	H2	H3	H4	H5	F
OVC-SE-L-CC-38	60	100	30	10	40	32	15	35	60	50	6.5
OVC-SE-L-CC-12	60	100	30	10	40	32	15	35	60	50	6.5
OVC-SE-L-CC-34	70	125	40	10	50	42.5	20	45	80	58	8.5
OVC-SE-L-CC-10	70	140	50	10	50	51	25	52	90	58	8.5

Regolazioni - Adjustments

Vite esterna esagono incassato
Leakproof hex socket screw

Piombatura
Sealing cap

Cappellotto
Cap

Sigla di ordinazione / Ordering code

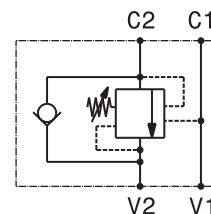
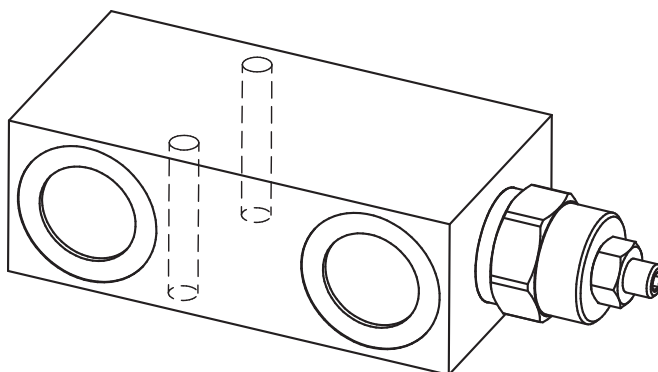
OVC-SE-L-CC-38 - 02 - - -

Modello <i>Type</i>	Codice taratura <i>Setting code</i> 01, 02	Codice regolazione <i>Adjustment code</i> -, C, D	- Alluminio / Aluminium A Acciaio / Steel
------------------------	--	---	--

For flow diagram see
 PRESSURE DROP OVERCENTER VALVES (8) +
 PRESSURE DROP OVERCENTER VALVES (9)

I dati non sono impegnativi, CBF si riserva di apportare modifiche senza preavviso.
The specifications are not binding, CBF reserves the right to introduce modifications without notice.

Valvola OVERCENTER semplice effetto in linea
In line, single effect COUNTERBALANCE valve
 mod. OVC-SE-L-200



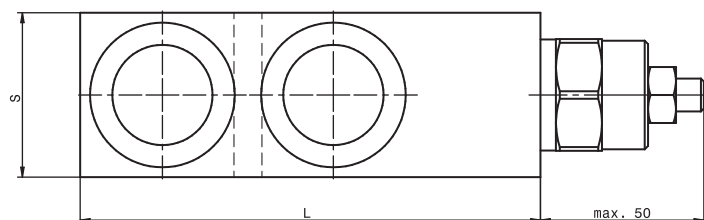
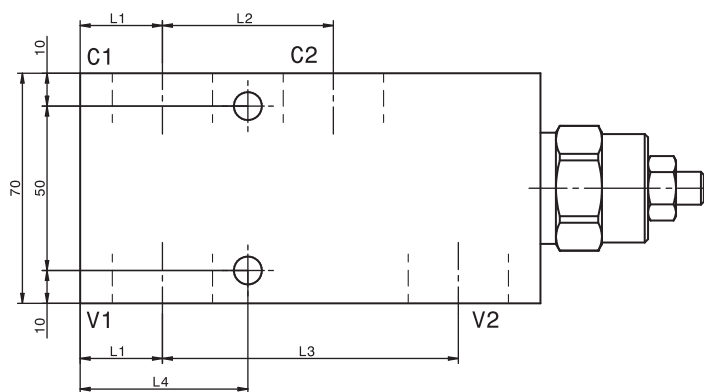
Corpo in alluminio
 Aluminium body

Pressione massima <i>Max pressure</i>	350 bar <i>5000 psi</i>
Rapporto di pilotaggio standard <i>Standard pilot ratio</i>	4:1
Rapporto di pilotaggio a richiesta <i>Pilot ratio upon request</i>	3:1 8:1 10:1

Dati e tarature ottenuti usando olio con viscosità 30 cSt a 50°C
Performances and calibrations are carried out by using hydraulic oil with 30 cSt viscosity at 50°C

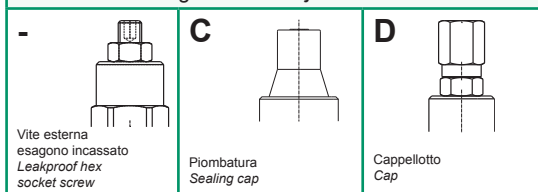
Viscosità consigliate <i>Recommended viscosity</i>	10 ÷ 420 cSt
Temperature di lavoro <i>Working temperature</i>	-20 ÷ +90 °C
Filtrazione assoluta <i>Absolute filtration</i>	25 µ

Modello <i>Type</i>	V1, V2 C1, C2	Portata max <i>Max. flow</i>
OVC-SE-L-200-34	3/4"GAS	150 l/min 40 gpm
OVC-SE-L-200-10	1"GAS	200 l/min 53 gpm



Taratura <i>Setting</i>			
La valvola deve essere tarata almeno 1.3 volte la massima pressione indotta dal carico <i>The valve must be set at least 1.3 times maximum load induced pressure</i>			
Codice <i>Code</i>	Taratura standard <i>Standard setting</i> (Q=5 l/min)	Campo di taratura <i>Adj. Pressure range</i>	Colore molla <i>Spring color</i>
01	100 bar <i>1450 psi</i>	20÷200 bar <i>290÷2900 psi</i>	Bianco <i>White</i>
02	280 bar <i>4000 psi</i>	50÷350 bar <i>725÷5000 psi</i>	Nero <i>Black</i>

Regolazioni - *Adjustments*



Sigla di ordinazione / *Ordering code*

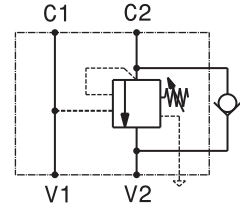
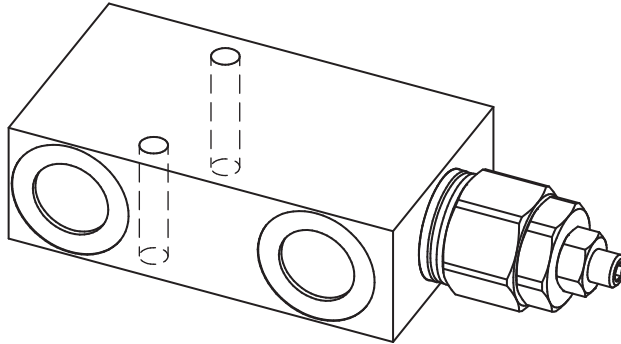
OVC-SE-L-200-34 - 02 - - -

Modello <i>Type</i>	L	S	L1	L2	L3	L4
OVC-SE-L-200-34	125	40	20	45	80	42.5
OVC-SE-L-200-10	140	50	25	52	90	51

Modello <i>Type</i>	Codice taratura <i>Setting code</i> 01, 02	Codice regolazione <i>Adjustment code</i> -, C, D	- Alluminio / <i>Aluminium</i> A Acciaio / <i>Steel</i>	For flow diagram see <i>PRESSURE DROP OVERCENTER VALVES (10)</i>
------------------------	--	---	--	---

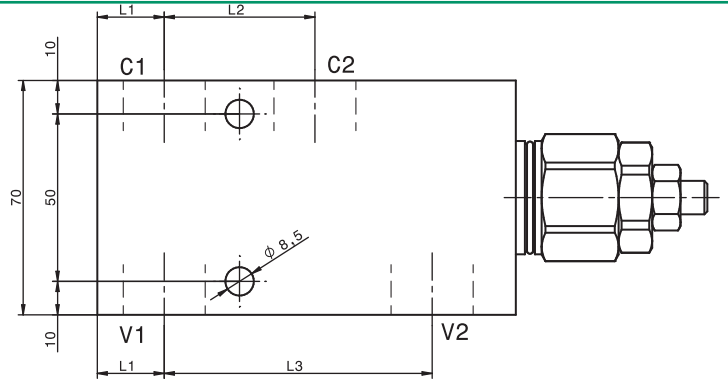
I dati non sono impegnativi, CBF si riserva di apportare modifiche senza preavviso.
The specifications are not binding, CBF reserves the right to introduce modifications without notice.

Valvola OVERCENTER compensata in pressione semplice effetto in linea
In line, single effect pressure compensated COUNTERBALANCE valve
 mod. OVC-SE-L-200-CC

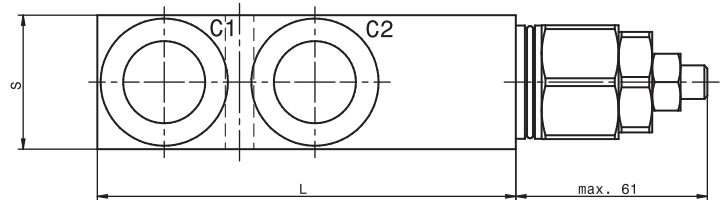


Corpo in alluminio
 Aluminium body

Pressione massima <i>Max pressure</i>	350 bar 5000 psi
Rapporto di pilotaggio standard <i>Standard pilot ratio</i>	4:1
Rapporto di pilotaggio a richiesta <i>Pilot ratio upon request</i>	3:1 8:1 10:1
Dati e tarature ottenuti usando olio con viscosità 30 cSt a 50°C <i>Performances and calibrations are carried out by using hydraulic oil with 30 cSt viscosity at 50°C</i>	
Viscosità consigliate <i>Recommended viscosity</i>	10 ÷ 420 cSt
Temperature di lavoro <i>Working temperature</i>	-20 ÷ +90 °C
Filtrazione assoluta <i>Absolute filtration</i>	25 µ

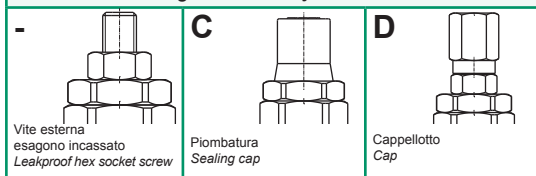


Modello <i>Type</i>	V1, V2 C1, C2	Portata max <i>Max. flow</i>
OVC-SE-L-200-CC-34	3/4"GAS	150 l/min 40 gpm
OVC-SE-L-200-CC-10	1"GAS	200 l/min 53 gpm



Taratura <i>Setting</i>	La valvola deve essere tarata almeno 1.3 volte la massima pressione indotta dal carico <i>The valve must be set at least 1.3 times maximum load induced pressure</i>		
Codice <i>Code</i>	Taratura standard <i>Standard setting</i> (Q=5 l/min)	Campo di taratura <i>Adj. Pressure range</i>	Colore molla <i>Spring color</i>
01	100 bar 1450 psi	20÷200 bar 290÷2900 psi	Bianco White
02	280 bar 4000 psi	50÷350 bar 725÷5000 psi	Nero Black

Regolazioni - *Adjustments*



Sigla di ordinazione / *Ordering code*

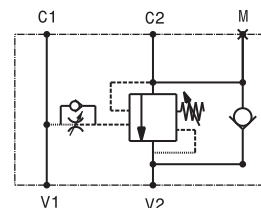
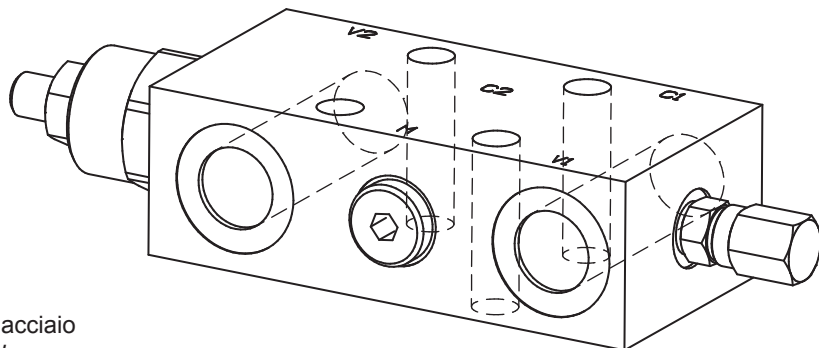
OVC-SE-L-200-CC-34 - 02 - - -

Modello <i>Type</i>	L	S	L1	L2	L3	L4
OVC-SE-L-200-CC-34	125	40	20	45	80	42.5
OVC-SE-L-200-CC-10	140	50	25	52	90	51

Modello <i>Type</i>	Codice taratura <i>Setting code</i> 01, 02	Codice regolazione <i>Adjustment code</i> -, C, D	- Alluminio / Aluminium A Acciaio / Steel	For flow diagram see PRESSURE DROP OVERCENTER VALVES (10)
------------------------	--	---	--	--

I dati non sono impegnativi, CBF si riserva di apportare modifiche senza preavviso.
The specifications are not binding, CBF reserves the right to introduce modifications without notice.

Valvola OVERCENTER in linea semplice effetto flangiabile - acciaio
In line, flange mounted, single effect COUNTERBALANCE valve - steel
mod. OVC-SE-L-F40-PST-U



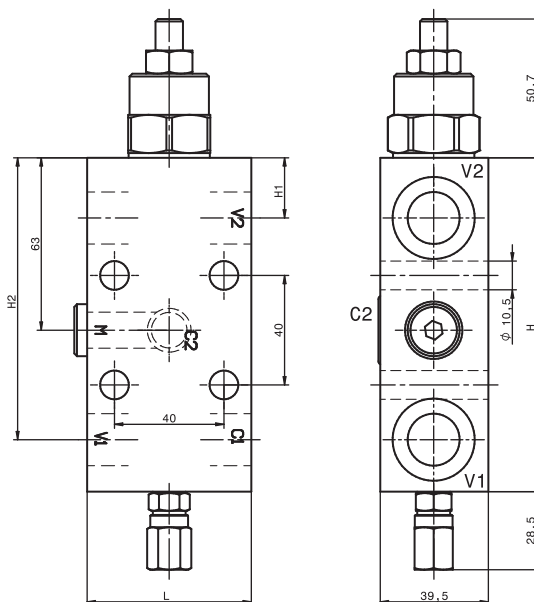
Corpo in acciaio
Steel body

Pressione massima <i>Max pressure</i>	350 bar 5000 psi
Rapporto di pilotaggio standard <i>Standard pilot ratio</i>	4:1
Rapporto di pilotaggio a richiesta <i>Pilot ratio upon request</i>	3:1 8:1 10:1

Dati e tarature ottenuti usando olio con viscosità 30 cSt a 50°C <i>Performances and calibrations are carried out by using hydraulic oil with 30 cSt viscosity at 50°C</i>	
Viscosità consigliate <i>Recommended viscosity</i>	10 ÷ 420 cSt
Temperature di lavoro <i>Working temperature</i>	-20 ÷ +90 °C
Filtrazione assoluta <i>Absolute filtration</i>	25 µ

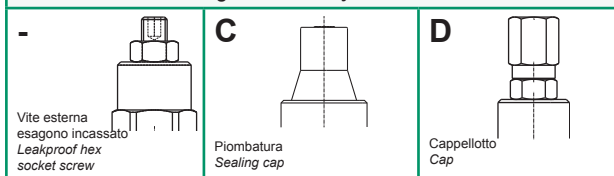
Modello <i>Type</i>	V1, V2	M	Portata max <i>Max. flow</i>
OVC-SE-L-F40-PST-12	1/2" GAS	1/4" GAS	80 l/min 21 gpm
OVC-SE-L-F40-PST-34	3/4" GAS	1/4" GAS	120 l/min 32 gpm

Taratura <i>Setting</i>	La valvola deve essere tarata almeno 1.3 volte la massima pressione indotta dal carico <i>The valve must be set at least 1.3 times maximum load induced pressure</i>		
Codice <i>Code</i>	Taratura standard <i>Standard setting</i> (Q=5 l/min)	Campo di taratura <i>Adj. Pressure range</i>	Colore molla <i>Spring color</i>
01	100 bar 1450 psi	20÷200 bar 290÷2900 psi	Bianco White
02	280 bar 4000 psi	50÷350 bar 725÷5000 psi	Nero Black

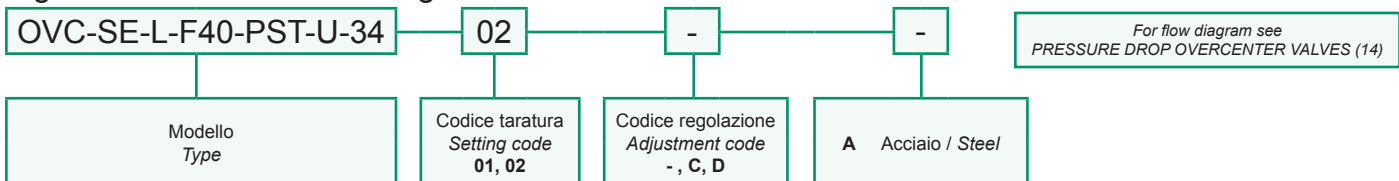


Modello <i>Type</i>	L	H	H1	H2
OVC-SE-L-F40-PST-12	60	122	22	103
OVC-SE-L-F40-PST-34	80	128	21	100

Regolazioni - *Adjustments*



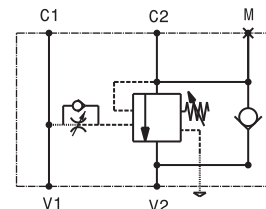
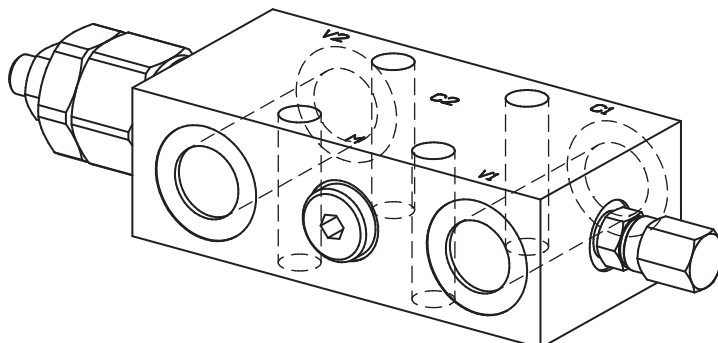
Sigla di ordinazione / *Ordering code*



I dati non sono impegnativi, CBF si riserva di apportare modifiche senza preavviso.
The specifications are not binding, CBF reserves the right to introduce modifications without notice.

Valvola OVERCENTER in linea semplice effetto flangiabile, compensata in pressione - acciaio
In line, flange mounted, single effect COUNTERBALANCE valve, pressure compensated - steel

mod. OVC-SE-L-F40-PST-U-CC



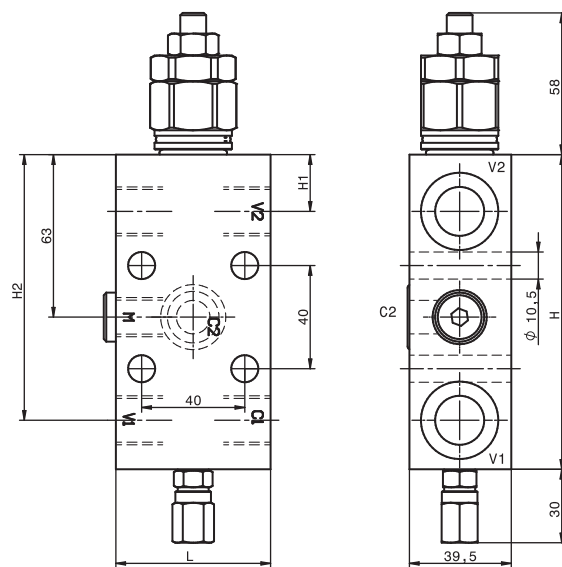
Corpo in acciaio
 Steel body

Pressione massima <i>Max pressure</i>	350 bar 5000 psi
Rapporto di pilotaggio standard <i>Standard pilot ratio</i>	4:1
Rapporto di pilotaggio a richiesta <i>Pilot ratio upon request</i>	3:1 8:1 10:1

Dati e tarature ottenuti usando olio con viscosità 30 cSt a 50°C <i>Performances and calibrations are carried out by using hydraulic oil with 30 cSt viscosity at 50°C</i>	
Viscosità consigliate <i>Recommended viscosity</i>	10 ÷ 420 cSt
Temperature di lavoro <i>Working temperature</i>	-20 ÷ +90 °C
Filtrazione assoluta <i>Absolute filtration</i>	25 µ

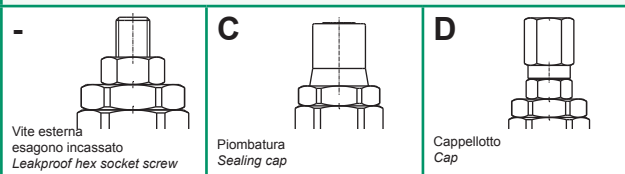
Modello <i>Type</i>	V1, V2	M	Portata max <i>Max. flow</i>
OVC-SE-L-F40-PST-CC-12	1/2" GAS	1/4" GAS	80 l/min 21 gpm
OVC-SE-L-F40-PST-CC-34	3/4" GAS	1/4" GAS	120 l/min 32 gpm

Taratura <i>Setting</i>	La valvola deve essere tarata almeno 1.3 volte la massima pressione indotta dal carico <i>The valve must be set at least 1.3 times maximum load induced pressure</i>		
Codice <i>Code</i>	Taratura standard <i>Standard setting</i> (Q=5 l/min)	Campo di taratura <i>Adj. Pressure range</i>	Colore molla <i>Spring color</i>
01	100 bar 1450 psi	20÷200 bar 290÷2900 psi	Bianco White
02	280 bar 4000 psi	50÷350 bar 725÷5000 psi	Nero Black



Modello <i>Type</i>	L	H	H1	H2
OVC-SE-L-F40-PST-12-CC	60	122	22	103
OVC-SE-L-F40-PST-34-CC	80	128	21	100

Regolazioni - Adjustments



Sigla di ordinazione / Ordering code

OVC-SE-L-F40-PST-U-CC-34

02

-

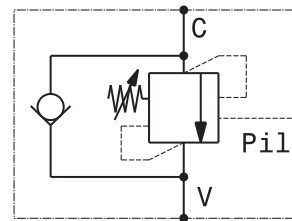
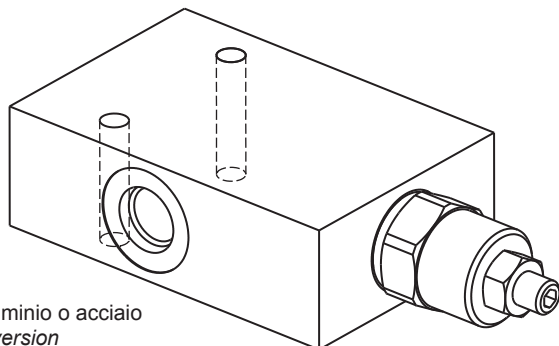
-

For flow diagram see
 PRESSURE DROP OVERCENTER VALVES (14)

Modello <i>Type</i>	Codice taratura <i>Setting code</i> 01, 02	Codice regolazione <i>Adjustment code</i> -, C, D	A Acciaio / Steel
------------------------	--	---	-------------------

I dati non sono impegnativi, CBF si riserva di apportare modifiche senza preavviso.
The specifications are not binding, CBF reserves the right to introduce modifications without notice.

Valvola OVERCENTER semplice effetto con pilotaggio esterno, attachi SAE
 Single effect COUNTERBALANCE valve with external pilot, SAE ports
 mod. OVC-SE-06S / OVC-SE-08S



Versione con corpo in alluminio o acciaio
 Aluminium or steel body version

Pressione massima Max pressure	350 bar 5000 psi
Rapporto di pilotaggio standard Standard pilot ratio	4,25:1
Rapporto di pilotaggio a richiesta Pilot ratio upon request	3:1 8:1 10:1

Dati e tarature ottenuti usando olio con viscosità 30 cSt a 50°C
 Performances and calibrations are carried out by using hydraulic oil with 30 cSt viscosity at 50°C

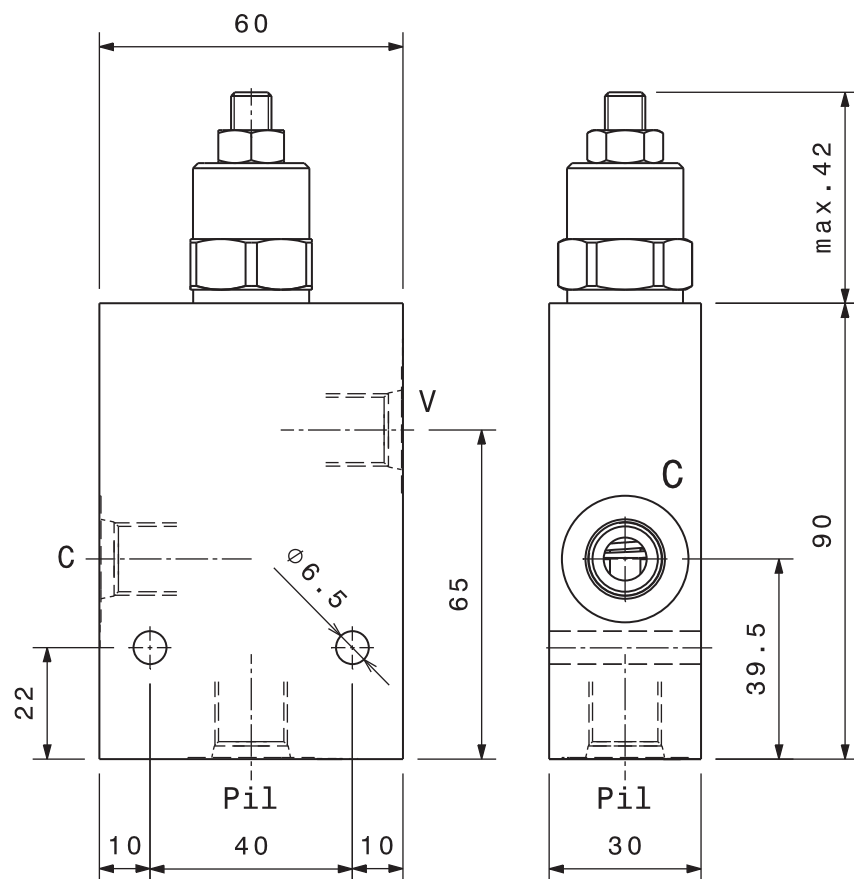
Viscosità consigliate Recommended viscosity	10 ÷ 420 cSt
Temperature di lavoro Working temperature	-20 ÷ +90 °C
Filtrazione assoluta Absolute filtration	25 µ

Modello Type	V, C	Pil	Portata max Max. flow
OVC-SE-06S	SAE-06	SAE-06	40 l/min 10.5 gpm
OVC-SE-08S	SAE-08	SAE-06	60 l/min 16 gpm

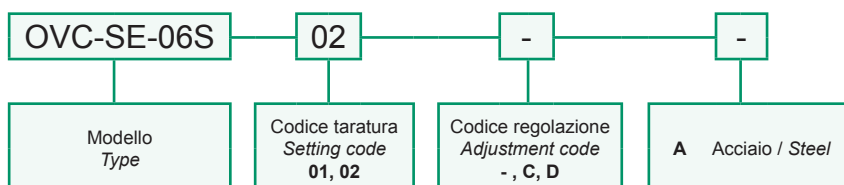
Taratura Setting	La valvola deve essere tarata almeno 1.3 volte la massima pressione indotta dal carico The valve must be set at least 1.3 times maximum load induced pressure		
Codice Code	Taratura standard Standard setting (Q=5 l/min)	Campo di taratura Adj. Pressure range	Colore molla Spring color
01	100 bar 1450 psi	20÷200 bar 290÷2900 psi	Bianco White
02	280 bar 4000 psi	50÷350 bar 725÷5000 psi	Nero Black

Regolazioni - Adjustments

- Vite esterni esagono incassato Leakproof hex socket screw	C Piombatuta Sealing cap	D Cappello Cap
---	--------------------------------	----------------------



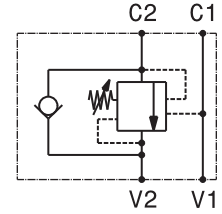
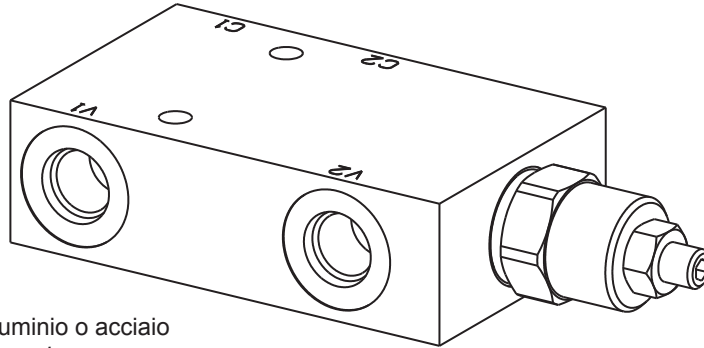
Sigla di ordinazione / Ordering code



For flow diagram see
 PRESSURE DROP OVERCENTER VALVES (11)

I dati non sono impegnativi, CBF si riserva di apportare modifiche senza preavviso.
 The specifications are not binding, CBF reserves the right to introduce modifications without notice.

Valvola OVERCENTER semplice effetto in linea, attacchi SAE
In line, single effect COUNTERBALANCE valve, SAE ports
 mod. OVC-SE-L-06S / OVC-SE-L-08S



Versione con corpo in alluminio o acciaio
Aluminium or steel body version

Pressione massima <i>Max pressure</i>	350 bar 5000 psi
Rapporto di pilotaggio standard <i>Standard pilot ratio</i>	4,25:1
Rapporto di pilotaggio a richiesta <i>Pilot ratio upon request</i>	3:1 8:1 10:1

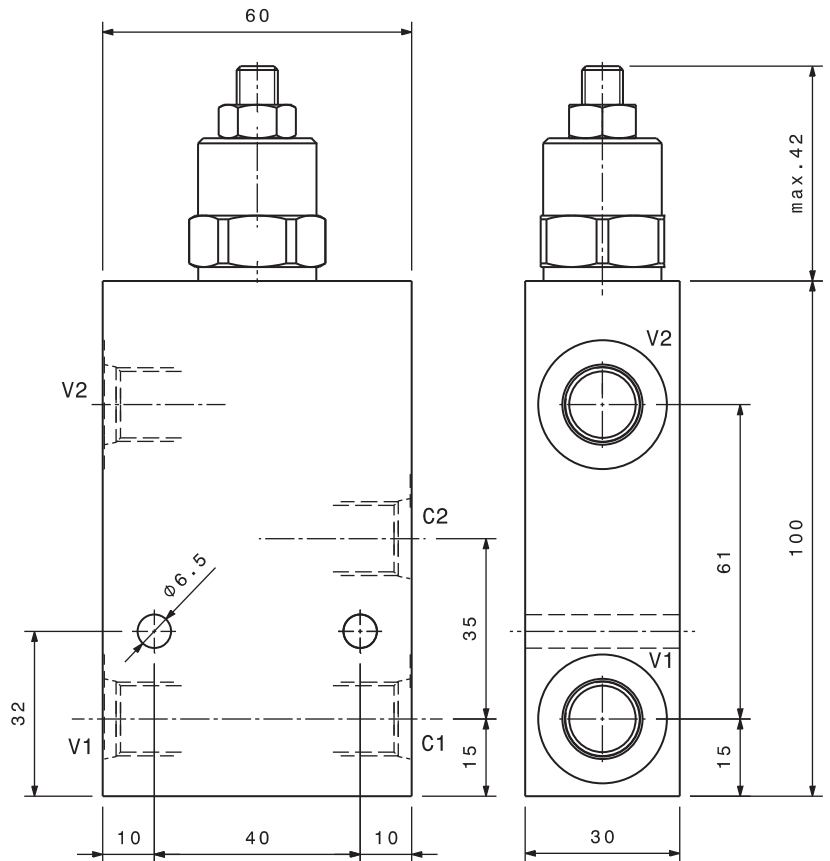
Dati e tarature ottenuti usando olio con viscosità 30 cSt a 50°C <i>Performances and calibrations are carried out by using hydraulic oil with 30 cSt viscosity at 50°C</i>	
Viscosità consigliate <i>Recommended viscosity</i>	10 ÷ 420 cSt
Temperature di lavoro <i>Working temperature</i>	-20 ÷ +90 °C
Filtrazione assoluta <i>Absolute filtration</i>	25 µ

Modello <i>Type</i>	V1, C1	V2, C2	Portata max <i>Max. flow</i>
OVC-SEL-06S	SAE-06	SAE-06	40 l/min 10.5 gpm
OVC-SEL-08S	SAE-08	SAE-08	60 l/min 16 gpm

Taratura Setting	La valvola deve essere tarata almeno 1.3 volte la massima pressione indotta dal carico <i>The valve must be set at least 1.3 times maximum load induced pressure</i>		
Codice <i>Code</i>	Taratura standard <i>Standard setting (Q=5 l/min)</i>	Campo di taratura <i>Adj. Pressure range</i>	Colore molla <i>Spring color</i>
01	100 bar 1450 psi	20÷200 bar 290÷2900 psi	Bianco White
02	280 bar 4000 psi	50÷350 bar 725÷5000 psi	Nero Black

Regolazioni - Adjustments

- Vite esterna esagono incassato <i>Leakproof hex socket screw</i>	C Piombatura <i>Sealing cap</i>	D Cappello <i>Cap</i>
---	--	------------------------------------



Sigla di ordinazione / Ordering code

OVC-SE-L-06S - 02 - - -

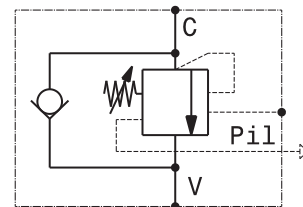
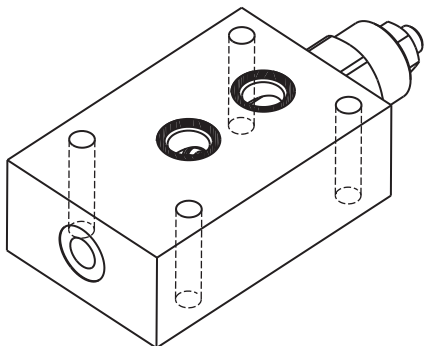
Modello <i>Type</i>	Codice taratura <i>Setting code</i> 01, 02	Codice regolazione <i>Adjustment code</i> -, C, D	- Alluminio / Aluminium A Acciaio / Steel
------------------------	--	---	--

For flow diagram see
 PRESSURE DROP OVERCENTER VALVES (11)

I dati non sono impegnativi, CBF si riserva di apportare modifiche senza preavviso.
The specifications are not binding, CBF reserves the right to introduce modifications without notice.

Valvola OVERCENTER semplice effetto compensata in pressione con pilotaggio esterno flangiabile
Flange mounted single effect pressure compensated COUNTERBALANCE valve with external pilot

mod. OVC-SE-CC-F2-34



Corpo in alluminio
 Aluminium body

Pressione massima <i>Max pressure</i>	350 bar <i>5000 psi</i>
Rapporto di pilotaggio standard <i>Standard pilot ratio</i>	4:1
Rapporto di pilotaggio a richiesta <i>Pilot ratio upon request</i>	3:1 8:1 10:1

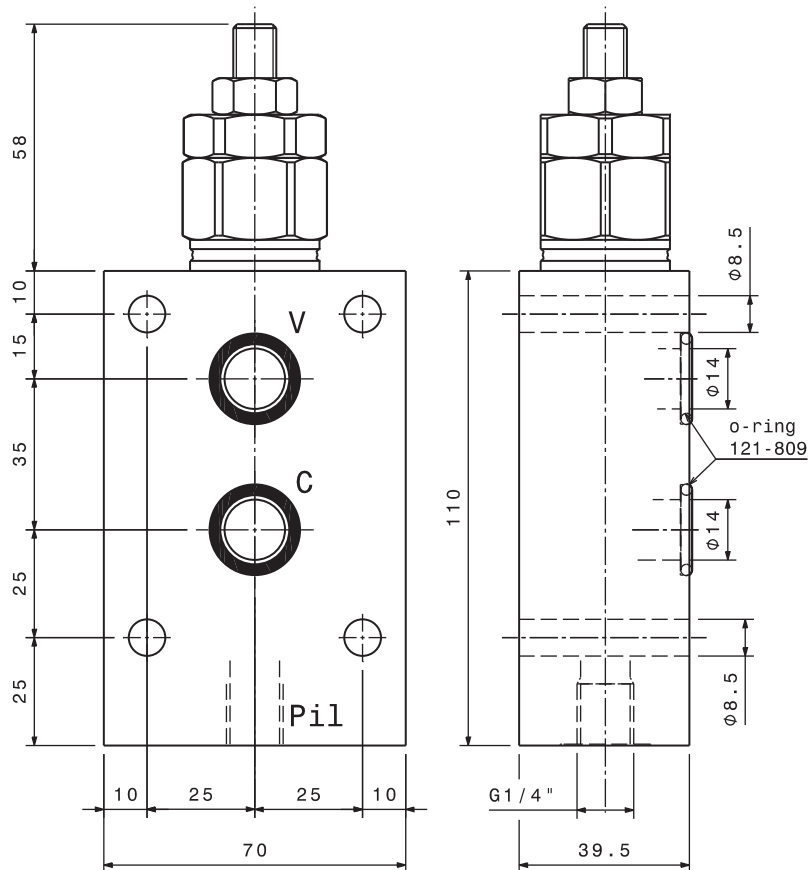
Dati e tarature ottenuti usando olio con viscosità 30 cSt a 50°C <i>Performances and calibrations are carried out by using hydraulic oil with 30 cSt viscosity at 50°C</i>	
Viscosità consigliate <i>Recommended viscosity</i>	10 ÷ 420 cSt
Temperature di lavoro <i>Working temperature</i>	-20 ÷ +90 °C
Filtrazione assoluta <i>Absolute filtration</i>	25 µ

Modello <i>Type</i>	V, C	Pil	Portata max <i>Max. flow</i>
OVC-SE-CC-F2-34	Ø 14	1/4" GAS	100 l/min 26 gpm

Taratura Setting	La valvola deve essere tarata almeno 1.3 volte la massima pressione indotta dal carico <i>The valve must be set at least 1.3 times maximum load induced pressure</i>		
Codice <i>Code</i>	Taratura standard <i>Standard setting</i> (Q=5 l/min)	Campo di taratura <i>Adj. Pressure range</i>	Colore molla <i>Spring color</i>
01	100 bar <i>1450 psi</i>	20+200 bar <i>290+2900 psi</i>	Bianco <i>White</i>
02	280 bar <i>4000 psi</i>	50+350 bar <i>725+5000 psi</i>	Nero <i>Black</i>

Regolazioni - Adjustments

 Vite esterna esagono incassato <i>Leakproof hex socket screw</i>	 Piombatura <i>Sealing cap</i>	 Cappello <i>Cap</i>
---	--------------------------------------	----------------------------



Sigla di ordinazione / Ordering code

OVC-SE-CC-F2-34 — 02 — -

Modello <i>Type</i>	Codice taratura <i>Setting code</i> 01, 02	Codice regolazione <i>Adjustment code</i> -, C, D
------------------------	--	---

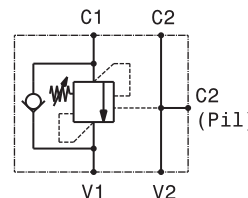
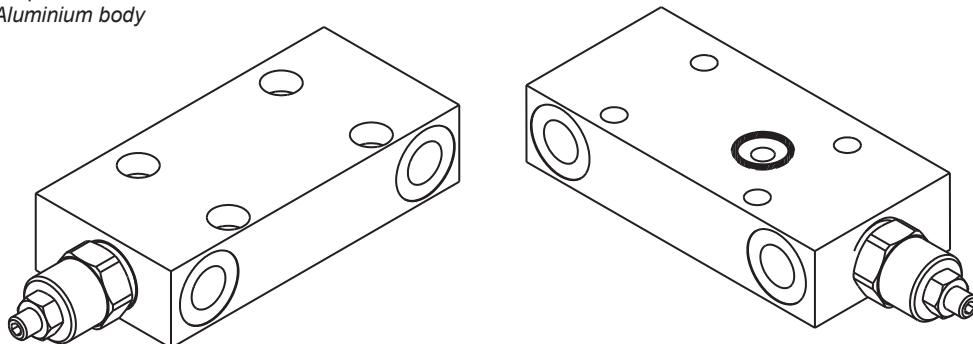
For flow diagram see
 PRESSURE DROP OVERCENTER VALVES (13)

I dati non sono impegnativi, CBF si riserva di apportare modifiche senza preavviso.
The specifications are not binding, CBF reserves the right to introduce modifications without notice.

Valvola OVERCENTER in linea semplice effetto con pilotaggio esterno flangiabile
Flange mounted, single effect COUNTERBALANCE in line valve with external pilot

mod. OVC-SE-L-F40-38

Corpo in alluminio
Aluminium body



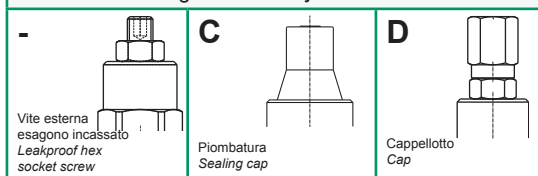
Pressione massima <i>Max pressure</i>	350 bar 5000 psi
Rapporto di pilotaggio standard <i>Standard pilot ratio</i>	4,25:1
Rapporto di pilotaggio a richiesta <i>Pilot ratio upon request</i>	3:1 8:1 10:1

Dati e tarature ottenuti usando olio con viscosità 30 cSt a 50°C <i>Performances and calibrations are carried out by using hydraulic oil with 30 cSt viscosity at 50°C</i>	
Viscosità consigliate <i>Recommended viscosity</i>	10 ÷ 420 cSt
Temperature di lavoro <i>Working temperature</i>	-20 ÷ +90 °C
Filtrazione assoluta <i>Absolute filtration</i>	25 µ

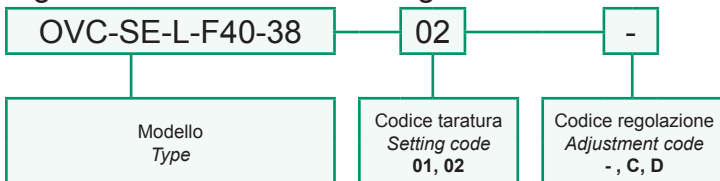
Modello <i>Type</i>	V1,V2,C2	C2(Pi1)	Portata max <i>Max. flow</i>
OVC-SE-L-F40-38	3/8" GAS	3/8" GAS	40 l/min 10.5 gpm

Taratura <i>Setting</i>	La valvola deve essere tarata almeno 1.3 volte la massima pressione indotta dal carico <i>The valve must be set at least 1.3 times maximum load induced pressure</i>		
Codice <i>Code</i>	Taratura standard <i>Standard setting (Q=5 l/min)</i>	Campo di taratura <i>Adj. Pressure range</i>	Colore molla <i>Spring color</i>
01	100 bar 1450 psi	20+200 bar 290+2900 psi	Bianco White
02	280 bar 4000 psi	50+350 bar 725+5000 psi	Nero Black

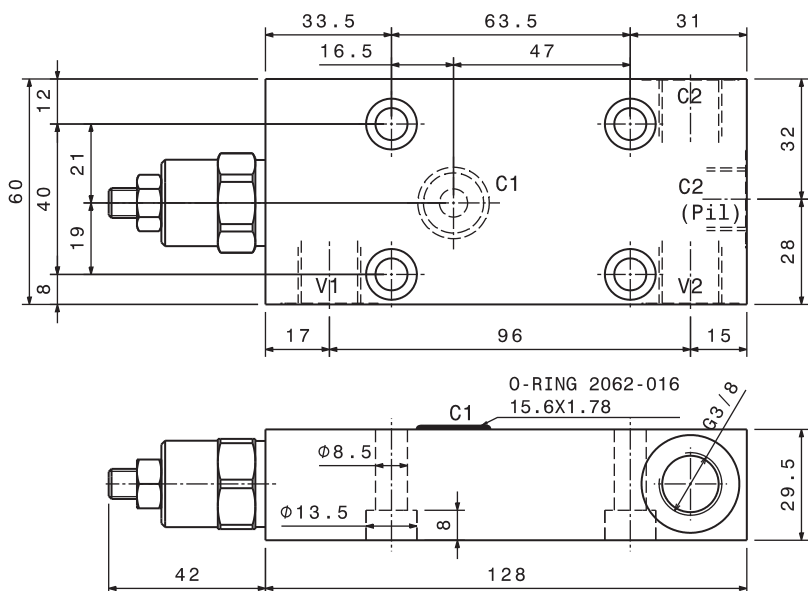
Regolazioni - Adjustments



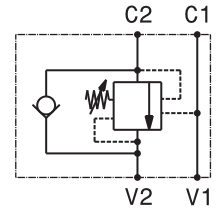
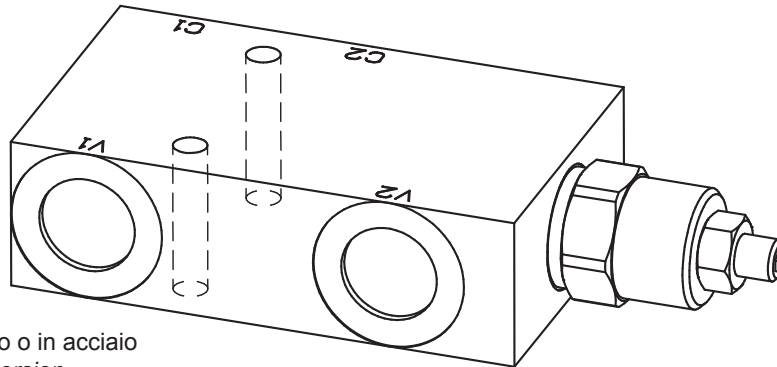
Sigla di ordinazione / Ordering code



For flow diagram see
PRESSURE DROP OVERCENTER VALVES (15)



Valvola OVERCENTER semplice effetto in linea
In line, single effect COUNTERBALANCE valve
 mod. OVC-SE-L (1/4"-1/8"BSP)



Versione corpo in alluminio o in acciaio
Aluminium or steel body version

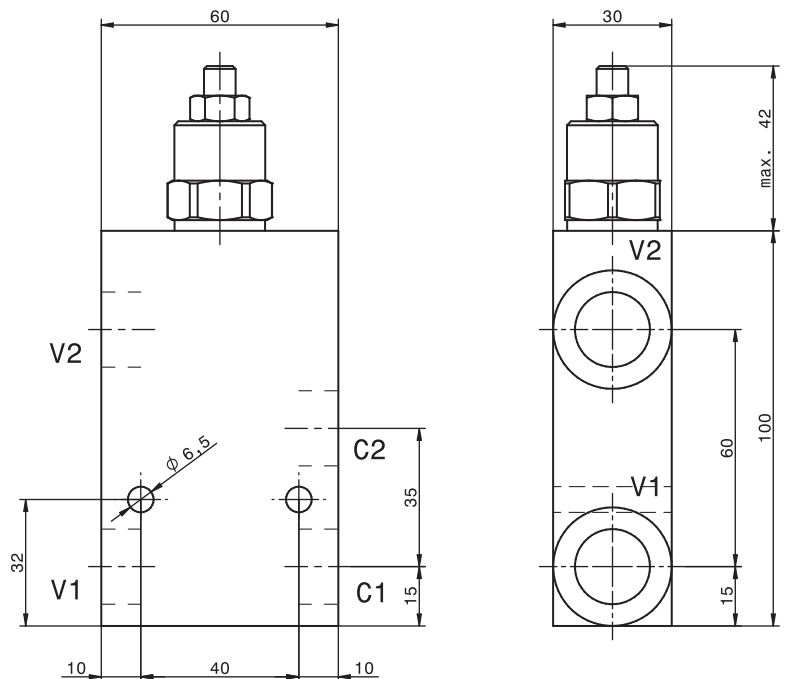
Pressione massima <i>Max pressure</i>	350 bar 5000 psi
Rapporto di pilotaggio standard <i>Standard pilot ratio</i>	4,25:1
Rapporto di pilotaggio a richiesta <i>Pilot ratio upon request</i>	3:1 8:1 10:1

Dati e tarature ottenuti usando olio con viscosità 30 cSt a 50°C
Performances and calibrations are carried out by using hydraulic oil with 30 cSt viscosity at 50°C

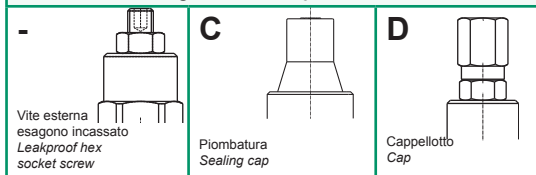
Viscosità consigliate <i>Recommended viscosity</i>	10 ÷ 420 cSt
Temperature di lavoro <i>Working temperature</i>	-20 ÷ +90 °C
Filtrazione assoluta <i>Absolute filtration</i>	25 µ

Modello <i>Type</i>	V1, V2 C1, C2	Portata max <i>Max. flow</i>
OVC-SE-L-18	1/8"GAS	15 l/min 4 gpm
OVC-SE-L-14	1/4"GAS	25 l/min 6,5 gpm

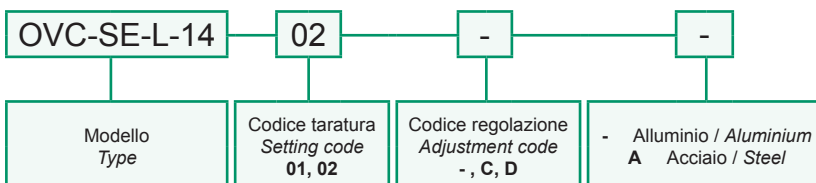
Taratura <i>Setting</i>	La valvola deve essere tarata almeno 1.3 volte la massima pressione indotta dal carico <i>The valve must be set at least 1.3 times maximum load induced pressure</i>		
Codice <i>Code</i>	Taratura standard <i>Standard setting</i> (Q=5 l/min)	Campo di taratura <i>Adj. Pressure range</i>	Colore molla <i>Spring color</i>
01	100 bar 1450 psi	20÷200 bar 290÷2900 psi	Bianco White
02	280 bar 4000 psi	50÷350 bar 725÷5000 psi	Nero Black



Regolazioni - Adjustments



Sigla di ordinazione / Ordering code

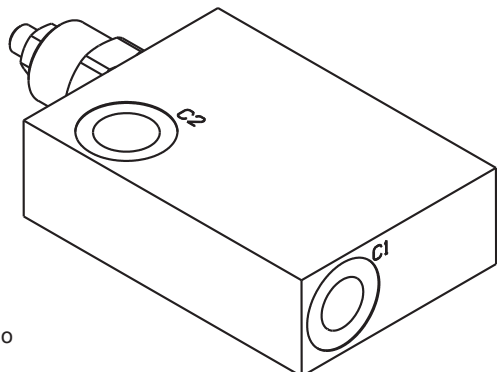


For flow diagram see
 PRESSURE DROP OVERCENTER VALVES (7)

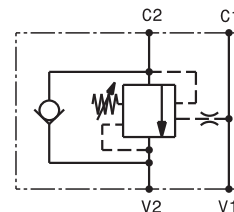
I dati non sono impegnativi, CBF si riserva di apportare modifiche senza preavviso.
The specifications are not binding, CBF reserves the right to introduce modifications without notice.

Valvola OVERCENTER semplice effetto in linea flangiabile con vite cava
In line, single effect COUNTERBALANCE valve – nipple screw flangeable

mod. OVC-SE-L-VC



Corpo in acciaio
Steel body



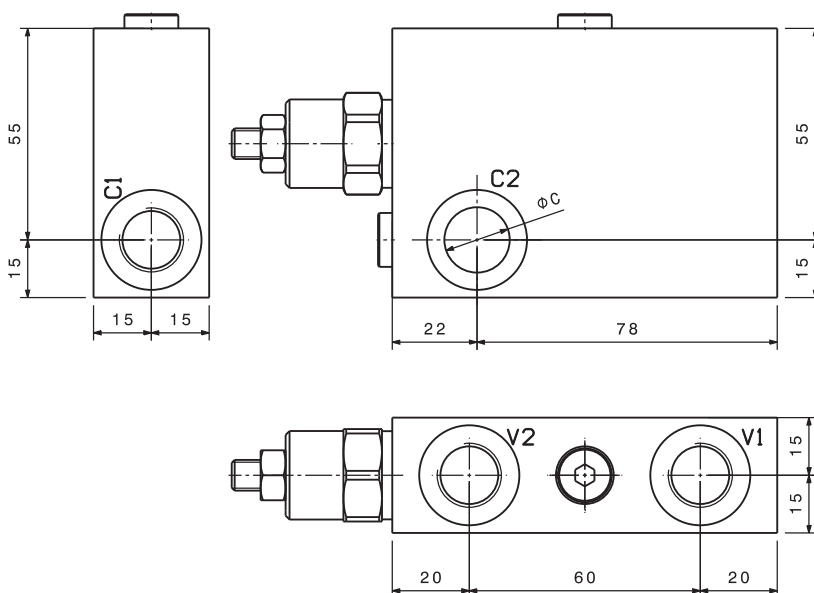
Pressione massima <i>Max pressure</i>	350 bar 5000 psi
Rapporto di pilotaggio standard <i>Standard pilot ratio</i>	4,25:1
Rapporto di pilotaggio a richiesta <i>Pilot ratio upon request</i>	3:1 8:1 10:1

Dati e tarature ottenuti usando olio con viscosità 30 cSt a 50°C
Performances and calibrations are carried out by using hydraulic oil with 30 cSt viscosity at 50°C

Viscosità consigliate <i>Recommended viscosity</i>	10 ÷ 420 cSt
Temperature di lavoro <i>Working temperature</i>	-20 ÷ +90 °C
Filtrazione assoluta <i>Absolute filtration</i>	25 µ

Modello <i>Type</i>	C1,V1,V2	C2 Ø	Portata max <i>Max. flow</i>
OVC-SE-L-VC-38	3/8" GAS	17	40 l/min 10.5 gpm
OVC-SE-L-VC-12	1/2" GAS	21	70 l/min 18 gpm

Taratura <i>Setting</i>			
La valvola deve essere tarata almeno 1.3 volte la massima pressione indotta dal carico <i>The valve must be set at least 1.3 times maximum load induced pressure</i>			
Codice <i>Code</i>	Taratura standard <i>Standard setting (Q=5 l/min)</i>	Campo di taratura <i>Adj. Pressure range</i>	Colore molla <i>Spring color</i>
01	100 bar 1450 psi	20÷200 bar 290÷2900 psi	Bianco White
02	280 bar 4000 psi	50÷350 bar 725÷5000 psi	Nero Black



Regolazioni - *Adjustments*

-

Vite esterna esagono incassato
Leakproof hex socket screw

C

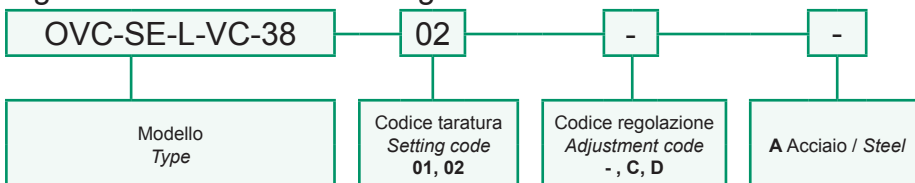
Piombatura
Sealing cap

D

Cappello
Cap

Vite cava disponibile a richiesta <i>Nipple screw available upon request</i>	Modello <i>Type</i>	Codice di ordinazione <i>Ordering Type</i>
	OVC-SE-L-VC-38	KITV0002
	OVC-SE-L-VC-12	KITV0003

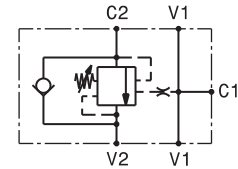
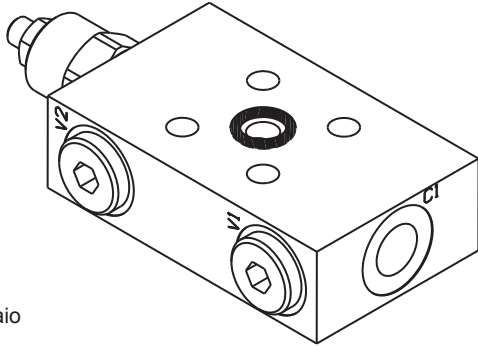
Sigla di ordinazione / *Ordering code*



For flow diagram see
PRESSURE DROP OVERCENTER VALVES (12)

I dati non sono impegnativi, CBF si riserva di apportare modifiche senza preavviso.
The specifications are not binding, CBF reserves the right to introduce modifications without notice.

Valvola OVERCENTER in linea semplice effetto con pilotaggio esterno flangiabile
Flange mounted, single effect COUNTERBALANCE in line valve with external pilot
mod. OVC-SE-L-F30-38



Corpo in acciaio
 Steel body

Pressione massima <i>Max pressure</i>	350 bar 5000 psi
Rapporto di pilotaggio standard <i>Standard pilot ratio</i>	4,25:1
Rapporto di pilotaggio a richiesta <i>Pilot ratio upon request</i>	3:1 8:1 10:1

Dati e tarature ottenuti usando olio con viscosità 30 cSt a 50°C
Performances and calibrations are carried out by using hydraulic oil with 30 cSt viscosity at 50°C

Viscosità consigliate <i>Recommended viscosity</i>	10 ÷ 420 cSt
Temperature di lavoro <i>Working temperature</i>	-20 ÷ +90 °C
Filtrazione assoluta <i>Absolute filtration</i>	25 µ

Modello <i>Type</i>	V1,V2,C2	Portata max <i>Max. flow</i>
OVC-SE-L-F30-38	3/8" GAS	40 l/min 10.5 gpm

Taratura Setting
 La valvola deve essere tarata almeno 1.3 volte la massima pressione indotta dal carico
The valve must be set at least 1.3 times maximum load induced pressure

Codice <i>Code</i>	Taratura standard <i>Standard setting (Q=5 l/min)</i>	Campo di taratura <i>Adj. Pressure range</i>	Colore molla <i>Spring color</i>
01	100 bar 1450 psi	20+200 bar 290+2900 psi	Bianco White
02	280 bar 4000 psi	50+350 bar 725+5000 psi	Nero Black

Regolazioni - Adjustments

-

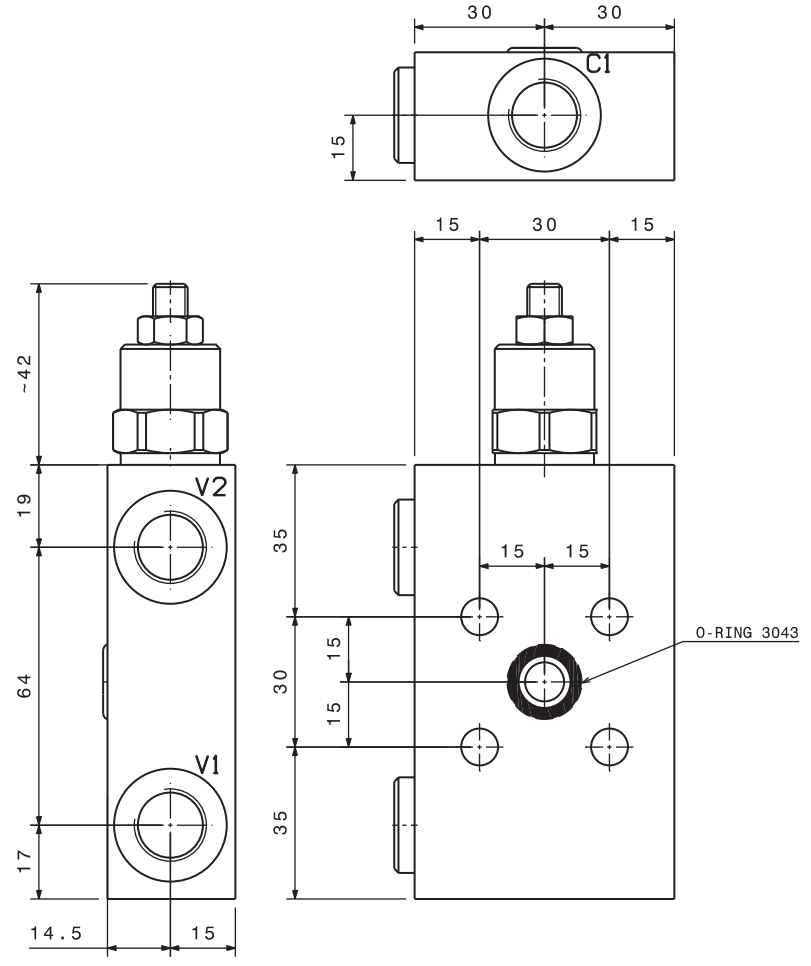
Vite esterna esagono incassato
Leakproof hex socket screw

C

Piombatura
Sealing cap

D

Cappello
Cap



Sigla di ordinazione / Ordering code

OVC-SE-L-F30-38 — 02 — - — -

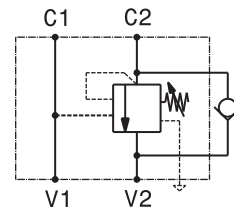
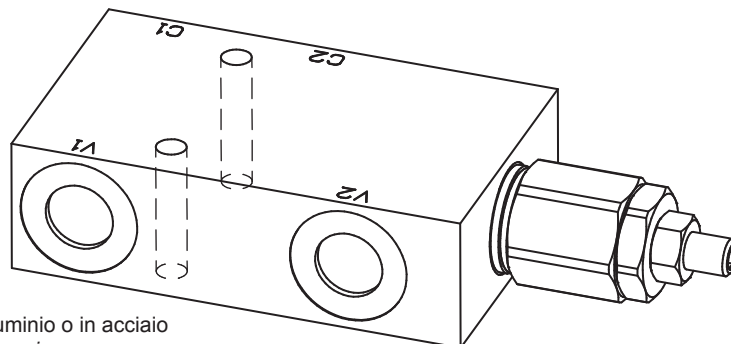
Modello <i>Type</i>	Codice taratura <i>Setting code</i> 01, 02	Codice regolazione <i>Adjustment code</i> -, C, D	A Acciaio / Steel
------------------------	--	---	-------------------

For flow diagram see
 PRESSURE DROP OVERCENTER VALVES (15)

I dati non sono impegnativi, CBF si riserva di apportare modifiche senza preavviso.
 The specifications are not binding, CBF reserves the right to introduce modifications without notice.

Valvola OVERCENTER compensata in pressione semplice effetto in linea
In line, single effect pressure compensated COUNTERBALANCE valve

mod. **OVC-SE-L-CC** (1/4"-1/8"BSP)

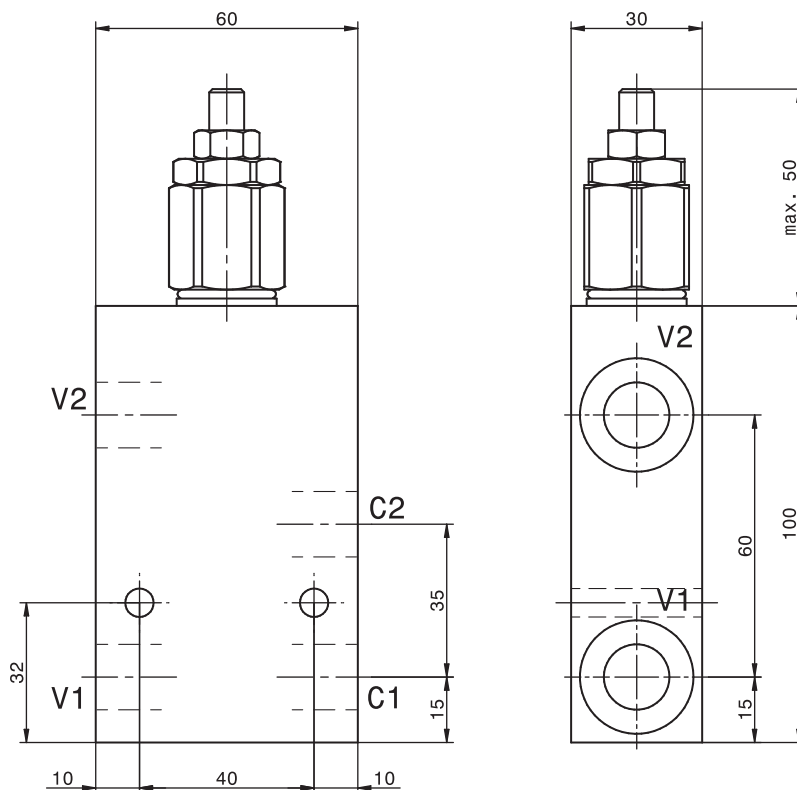


Versione con corpo in alluminio o in acciaio
Aluminium or steel body version

Pressione massima <i>Max pressure</i>	350 bar 5000 psi
Rapporto di pilotaggio standard <i>Standard pilot ratio</i>	4,25:1
Rapporto di pilotaggio a richiesta <i>Pilot ratio upon request</i>	3:1 8:1 10:1

Modello <i>Type</i>	V1, V2 C1, C2	Portata max <i>Max. flow</i>
OVC-SE-L-CC-18	1/8"GAS	15 l/min 4 gpm
OVC-SE-L-CC-14	1/4"GAS	25 l/min 6,5 gpm

Taratura <i>Setting</i>	La valvola deve essere tarata almeno 1.3 volte la massima pressione indotta dal carico <i>The valve must be set at least 1.3 times maximum load induced pressure</i>		
Codice <i>Code</i>	Taratura standard <i>Standard setting</i> (Q=5 l/min)	Campo di taratura <i>Adj. Pressure range</i>	Colore molla <i>Spring color</i>
01	100 bar 1450 psi	20+200 bar 290+2900 psi	Bianco White
02	280 bar 4000 psi	50+350 bar 725+5000 psi	Nero Black



Regolazioni - Adjustments

- Vite esterna esagono incassato <i>Leakproof hex socket screw</i>	C Piombatura <i>Sealing cap</i>	D Cappellotto <i>Cap</i>
---	--	---------------------------------------

Dati e tarature ottenuti usando olio con viscosità 30 cSt a 50°C
Performances and calibrations are carried out by using hydraulic oil with 30 cSt viscosity at 50°C

Viscosità consigliate <i>Recommended viscosity</i>	10 ÷ 420 cSt
Temperature di lavoro <i>Working temperature</i>	-20 ÷ +90 °C
Filtrazione assoluta <i>Absolute filtration</i>	25 µ

Sigla di ordinazione / **Ordering code**

OVC-SE-L-CC-14 - 02 - - -

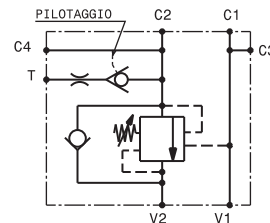
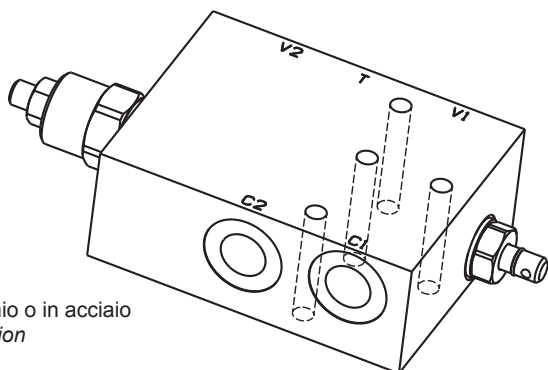
Modello <i>Type</i>	Codice taratura <i>Setting code</i> 01, 02	Codice regolazione <i>Adjustment code</i> -, C, D	- Alluminio / Aluminium A Acciaio / Steel
------------------------	--	---	--

For flow diagram see
PRESSURE DROP OVERCENTER VALVES (7)

I dati non sono impegnativi, **CBF** si riserva di apportare modifiche senza preavviso.
The specifications are not binding, CBF reserves the right to introduce modifications without notice.

Valvola OVERCENTER semplice effetto in linea, con pilotaggio meccanico
In line, single effect COUNTERBALANCE valve, with external pilot piston

mod. OVC-SE-L-38-F-PM

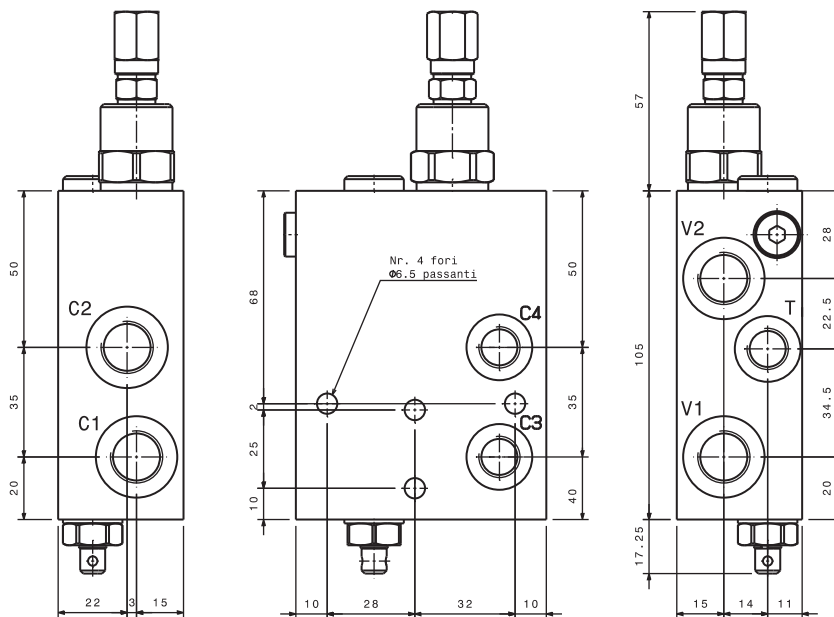


Versione con corpo in alluminio o in acciaio
Aluminium or steel body version

Modello Type	V1, V2 C1, C2	T	Portata max Max. flow
OVC-SE-L-38-F-PM	3/8" GAS	1/4" GAS	40 l/min 10.5 gpm

Pressione massima Max pressure	350 bar 5000 psi
Rapporto di pilotaggio standard Standard pilot ratio	4,25:1
Rapporto di pilotaggio a richiesta Pilot ratio upon request	3:1 8:1 10:1

Taratura Setting	La valvola deve essere tarata almeno 1.3 volte la massima pressione indotta dal carico <i>The valve must be set at least 1.3 times maximum load induced pressure</i>		
Codice Code	Taratura standard Standard setting (Q=5 l/min)	Campo di taratura Adj. Pressure range	Colore molla Spring color
01	100 bar 1450 psi	20÷200 bar 290÷2900 psi	Bianco White
02	280 bar 4000 psi	50÷350 bar 725÷5000 psi	Nero Black



Regolazioni - Adjustments

- Vite esterna esagono incassato Leakproof hex socket screw	C Piombaturo Sealing cap	D Cappello Cap
---	---------------------------------------	-----------------------------

For flow diagram see
PRESSURE DROP OVERCENTER VALVES (8)

Sigla di ordinazione / Ordering code

OVC-SE-L-38-F-PM — 02 — — —

Modello Type	Codice taratura Setting code 01, 02	Codice regolazione Adjustment code -, C, D	- Alluminio/Aluminium A Acciaio / Steel
-----------------	---	--	--

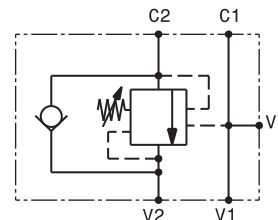
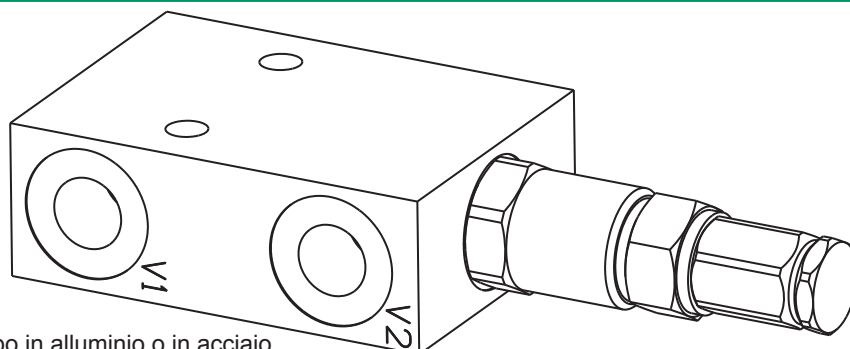
Dati e tarature ottenuti usando olio con viscosità 30 cSt a 50°C
Performances and calibrations are carried out by using hydraulic oil with 30 cSt viscosity at 50°C

Viscosità consigliate Recommended viscosity	10 ÷ 420 cSt
Temperature di lavoro Working temperature	-20 ÷ +90 °C
Filtrazione assoluta Absolute filtration	25 µ

I dati non sono impegnativi, **CBF** si riserva di apportare modifiche senza preavviso.
The specifications are not binding, CBF reserves the right to introduce modifications without notice.

Valvola OVERCENTER semplice effetto in linea
In line, single effect COUNTERBALANCE valve

mod. OVC-SE-L-25 (1/4"-1/8"BSP)



Versione con corpo in alluminio o in acciaio
Aluminium or steel body version

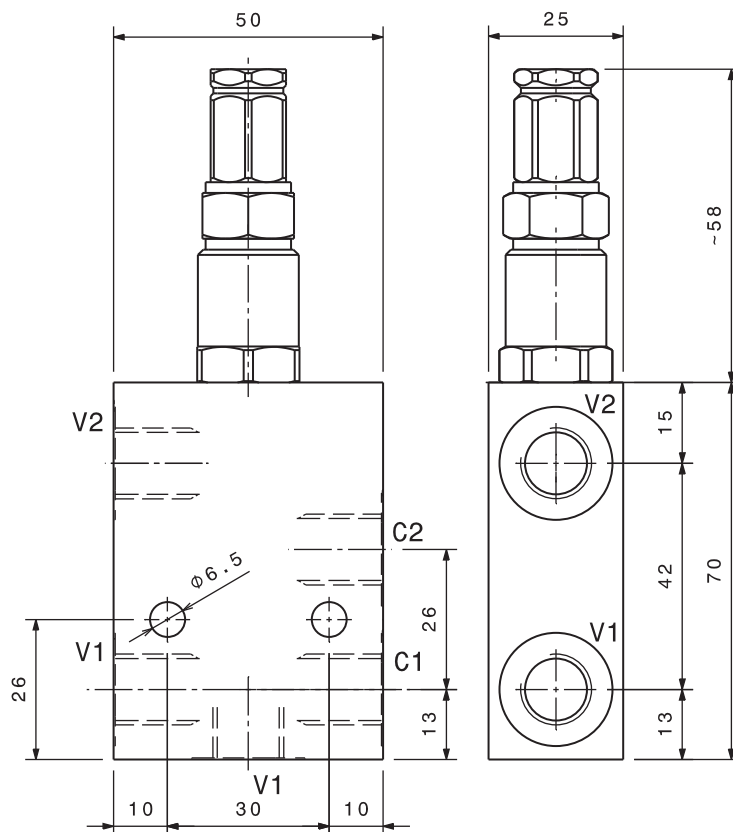
Pressione massima <i>Max pressure</i>	350 bar <i>5000 psi</i>
Rapporto di pilotaggio standard <i>Standard pilot ratio</i>	4:1
Rapporto di pilotaggio a richiesta <i>Pilot ratio upon request</i>	3:1 8:1 10:1

Dati e tarature ottenuti usando olio con viscosità 30 cSt a 50°C
Performances and calibrations are carried out by using hydraulic oil with 30 cSt viscosity at 50°C

Viscosità consigliate <i>Recommended viscosity</i>	10 ÷ 420 cSt
Temperature di lavoro <i>Working temperature</i>	-20 ÷ +90 °C
Filtrazione assoluta <i>Absolute filtration</i>	25 µ

Modello <i>Type</i>	V1, V2 C1, C2	Portata max <i>Max. flow</i>
OVC-SE-L-25-18	1/8"GAS	15 l/min 4 gpm
OVC-SE-L-25-14	1/4"GAS	20 l/min 5,28 gpm

Taratura <i>Setting</i>			
La valvola deve essere tarata almeno 1.3 volte la massima pressione indotta dal carico <i>The valve must be set at least 1.3 times maximum load induced pressure</i>			
Codice <i>Code</i>	Taratura standard <i>Standard setting</i> (Q=5 l/min)	Campo di taratura <i>Adj. Pressure range</i>	Colore molla <i>Spring color</i>
01	100 bar <i>1450 psi</i>	20÷200 bar <i>290÷2900 psi</i>	Bianco <i>White</i>
02	280 bar <i>4000 psi</i>	50÷350 bar <i>725÷5000 psi</i>	Nero <i>Black</i>



Sigla di ordinazione / Ordering code

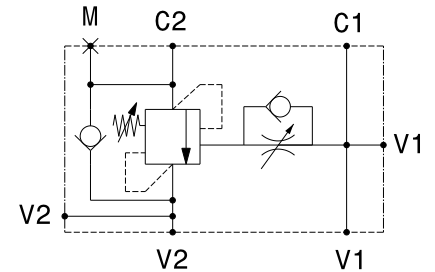
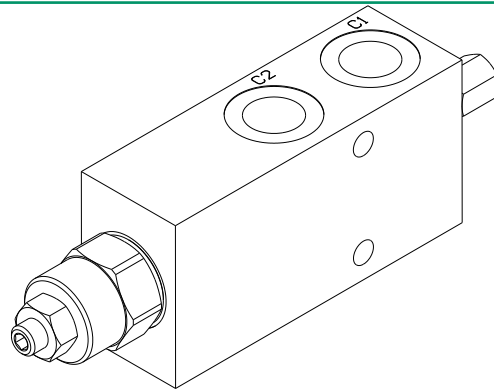
OVC-SE-L-25-14 - 02 -

Modello <i>Type</i>	Codice taratura <i>Setting code</i> 01, 02	- Alluminio / Aluminium A Acciaio / Steel
------------------------	--	--

For flow diagram see
 PRESSURE DROP OVERCENTER VALVES (6)

I dati non sono impegnativi, CBF si riserva di apportare modifiche senza preavviso.
The specifications are not binding, CBF reserves the right to introduce modifications without notice.

Valvola OVERCENTER in linea semplice - acciaio
In line, single effect COUNTERBALANCE valve - steel
mod. OVC-SE-L-PST-U



Corpo in acciaio
Steel body

Pressione massima Max pressure	350 bar 5000 psi
Rapporto di pilotaggio standard Standard pilot ratio	4:1
Rapporto di pilotaggio a richiesta Pilot ratio upon request	3:1 8:1 10:1

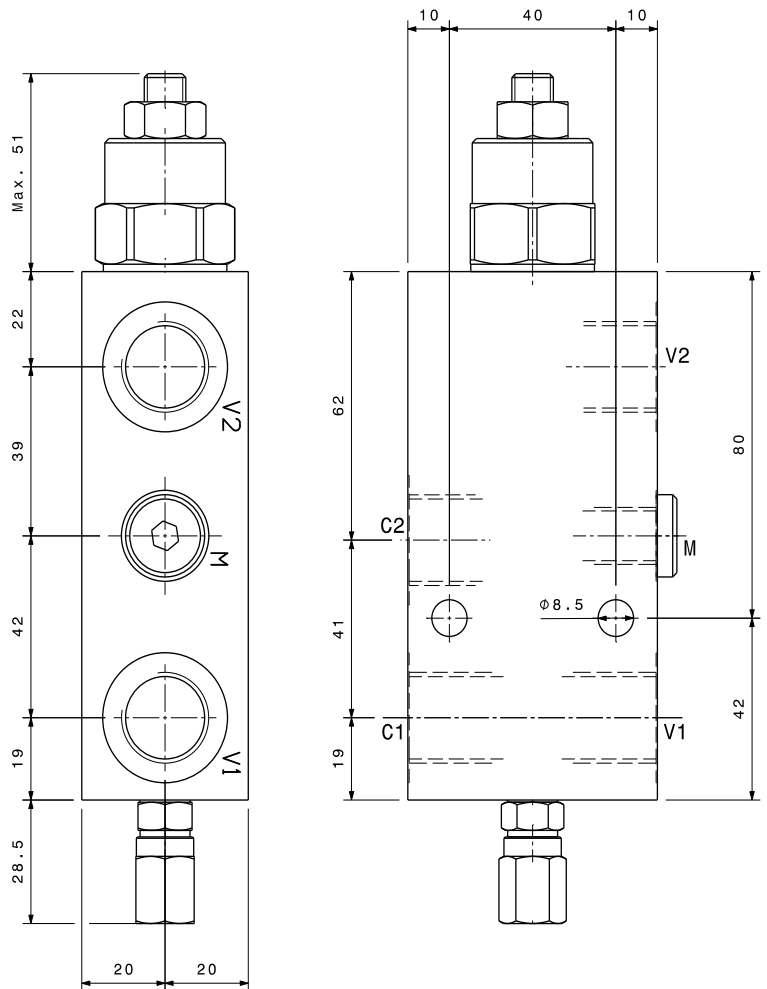
Dati e tarature ottenuti usando olio con viscosità 30 cSt a 50°C Performances and calibrations are carried out by using hydraulic oil with 30 cSt viscosity at 50°C	
Viscosità consigliate Recommended viscosity	10 ÷ 420 cSt
Temperature di lavoro Working temperature	-20 ÷ +90 °C
Filtrazione assoluta Absolute filtration	25 µ

Modello Type	V1, V2, C1, C2	M	Portata max Max. flow
OVC-SE-L-PST-U-12	1/2" GAS	1/4" GAS	100 l/min 26.4 gpm

Taratura Setting	La valvola deve essere tarata almeno 1.3 volte la massima pressione indotta dal carico The valve must be set at least 1.3 times maximum load induced pressure		
Codice Code	Taratura standard Standard setting (Q=5 l/min)	Campo di taratura Adj. Pressure range	Colore molla Spring color
01	100 bar 1450 psi	20÷200 bar 290÷2900 psi	Bianco White
02	280 bar 4000 psi	50÷350 bar 725÷5000 psi	Nero Black

Regolazioni - Adjustments

-	C	D
Vite esterna esagono incassato Leakproof hex socket screw	Piombatura Sealing cap	Cappello Cap



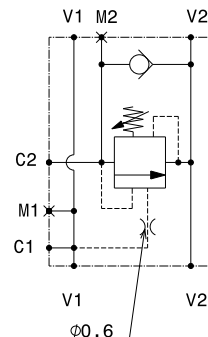
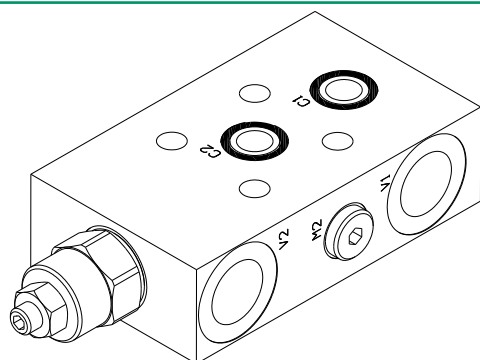
Sigla di ordinazione / Ordering code

OVC-SE-L-PST-U-12 — 02 — - — -

Modello Type	Codice taratura Setting code 01, 02	Codice regolazione Adjustment code -, C, D	A Acciaio / Steel
-----------------	---	--	-------------------

I dati non sono impegnativi, CBF si riserva di apportare modifiche senza preavviso.
The specifications are not binding, CBF reserves the right to introduce modifications without notice.

Valvola OVERCENTER semplice effetto flangiabile
 Flange mounted, single effect COUNTERBALANCE valve
 mod. OVC-SE-F2-PST-34



Versione corpo in acciaio
 Steel body version

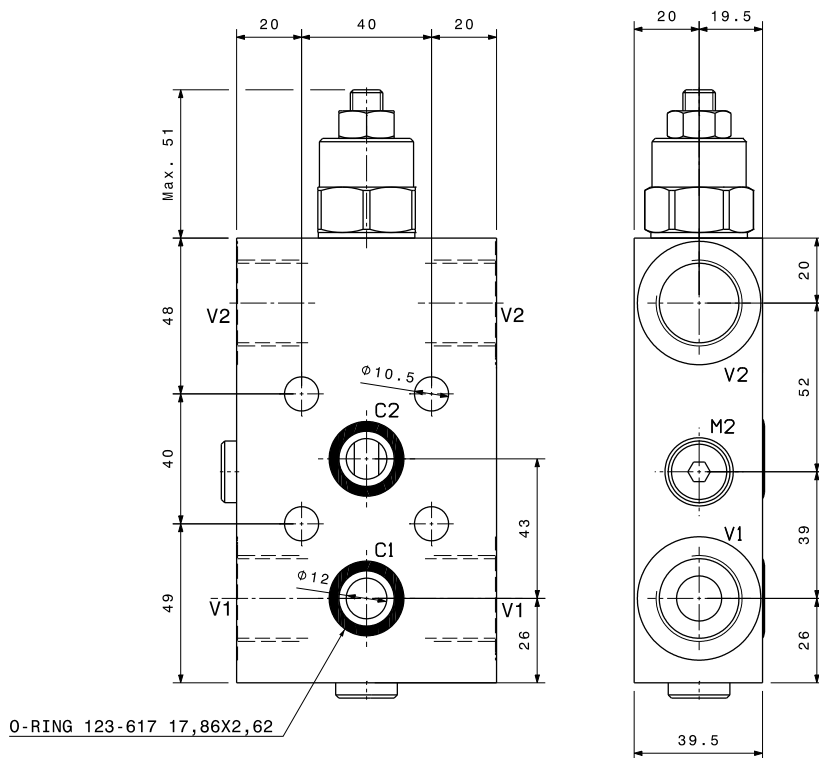
Pressione massima Max pressure	350 bar 5000 psi
Rapporto di pilotaggio standard Standard pilot ratio	4:1
Rapporto di pilotaggio a richiesta Pilot ratio upon request	3:1 8:1 10:1

Dati e tarature ottenuti usando olio con viscosità 30 cSt a 50°C
 Performances and calibrations are carried out by using hydraulic oil with 30 cSt viscosity at 50°C

Viscosità consigliate Recommended viscosity	10 ÷ 420 cSt
Temperature di lavoro Working temperature	-20 ÷ +90 °C
Filtrazione assoluta Absolute filtration	25 µ

Modello Type	V1, V2	M1, M2	Portata max Max. flow
OVC-SE-F2-PST-34	3/4"GAS	1/4"GAS	120 l/min 31.7 gpm

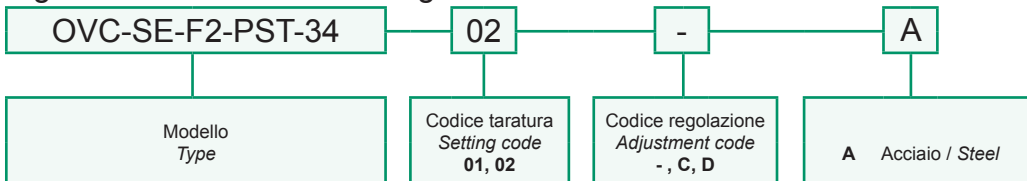
Taratura Setting	La valvola deve essere tarata almeno 1.3 volte la massima pressione indotta dal carico The valve must be set at least 1.3 times maximum load induced pressure		
Codice Code	Taratura standard Standard setting (Q=5 l/min)	Campo di taratura Adj. Pressure range	Colore molla Spring color
01	100 bar 1450 psi	20÷200 bar 290÷2900 psi	Bianco White
02	280 bar 4000 psi	50÷350 bar 725÷5000 psi	Nero Black



Regolazioni - Adjustments

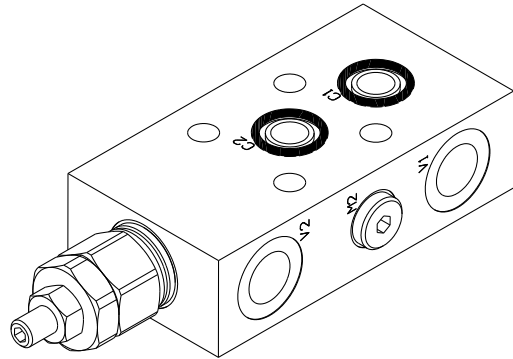
- Vite esterna esagono incassato Leakproof hex socket screw	C Plombatura Sealing cap	D Cappello Cap
---	--------------------------------	----------------------

Sigla di ordinazione / Ordering code

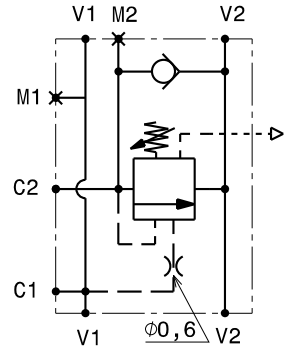


I dati non sono impegnativi, CBF si riserva di apportare modifiche senza preavviso.
 The specifications are not binding, CBF reserves the right to introduce modifications without notice.

Valvola OVERCENTER semplice effetto flangiabile compensata in pressione
Flange mounted, single effect COUNTERBALANCE valve, pressure compensated
mod. OVC-SE-F2-40-PST-CC



Versione corpo in acciaio
Steel body version



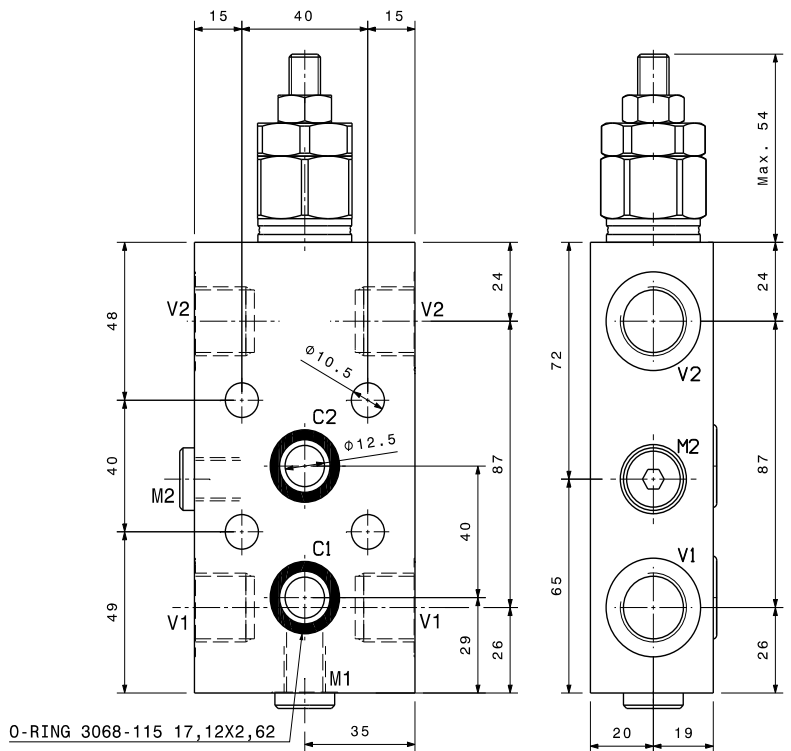
Pressione massima <i>Max pressure</i>	350 bar 5000 psi
Rapporto di pilotaggio standard <i>Standard pilot ratio</i>	4:1
Rapporto di pilotaggio a richiesta <i>Pilot ratio upon request</i>	3:1 8:1 10:1

Dati e tarature ottenuti usando olio con viscosità 30 cSt a 50°C
Performances and calibrations are carried out by using hydraulic oil with 30 cSt viscosity at 50°C

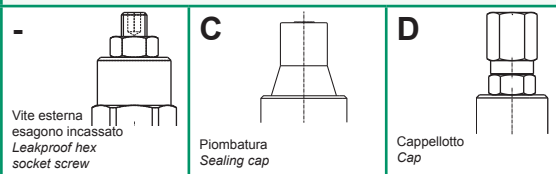
Viscosità consigliate <i>Recommended viscosity</i>	10 ÷ 420 cSt
Temperature di lavoro <i>Working temperature</i>	-20 ÷ +90 °C
Filtrazione assoluta <i>Absolute filtration</i>	25 µ

Modello <i>Type</i>	V1, V2	M1, M2	Portata max <i>Max. flow</i>
OVC-SE-F2-40-PST-CC-12	1/2" GAS	1/4" GAS	120 l/min 31.7 gpm

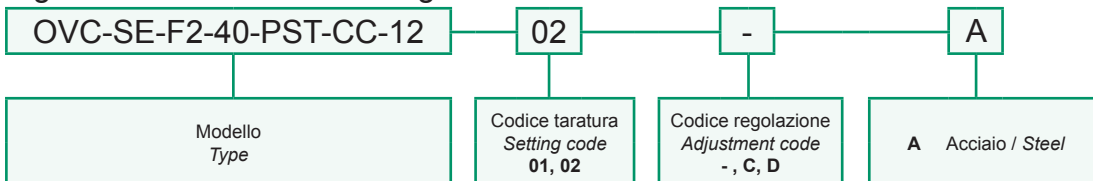
Taratura <i>Setting</i>			
La valvola deve essere tarata almeno 1.3 volte la massima pressione indotta dal carico <i>The valve must be set at least 1.3 times maximum load induced pressure</i>			
Codice <i>Code</i>	Taratura standard <i>Standard setting</i> (Q=5 l/min)	Campo di taratura <i>Adj. Pressure range</i>	Colore molla <i>Spring color</i>
01	100 bar 1450 psi	20÷200 bar 290÷2900 psi	Bianco White
02	280 bar 4000 psi	50÷350 bar 725÷5000 psi	Nero Black



Regolazioni - *Adjustments*

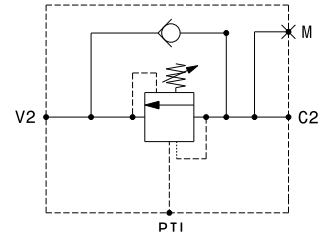
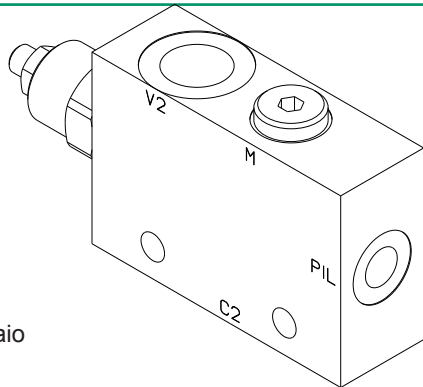


Sigla di ordinazione / *Ordering code*



I dati non sono impegnativi, **CBF** si riserva di apportare modifiche senza preavviso.
The specifications are not binding, CBF reserves the right to introduce modifications without notice.

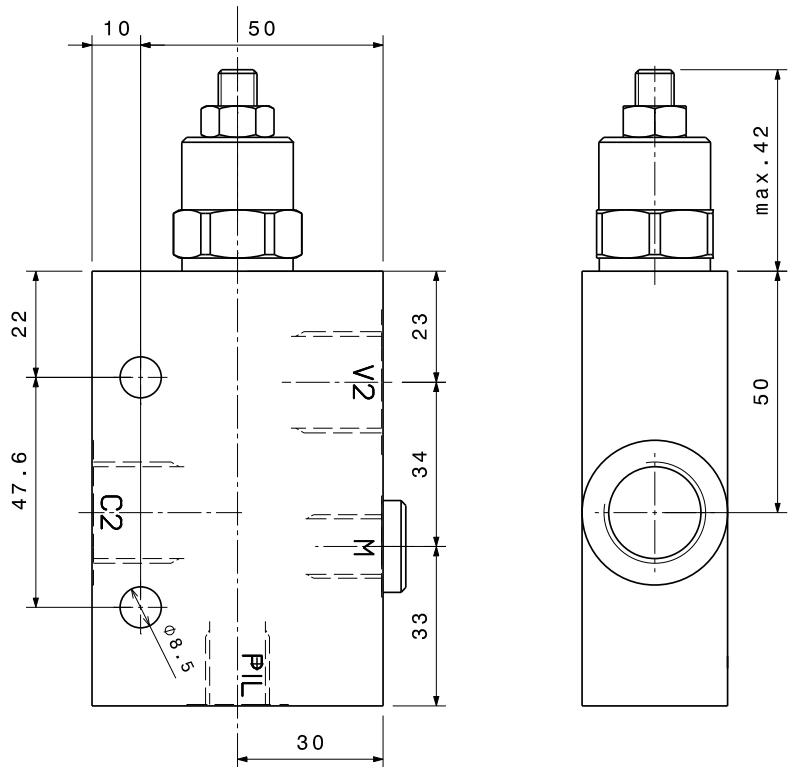
Valvola OVERCENTER semplice effetto con pilotaggio esterno
Single effect COUNTERBALANCE valve with external pilot
mod. OVC-SE-AM



Corpo in alluminio o acciaio
Aluminium or steel body

Pressione massima Max pressure	350 bar 5000 psi
Rapporto di pilotaggio standard Standard pilot ratio	4,25:1
Rapporto di pilotaggio a richiesta Pilot ratio upon request	3:1 8:1 10:1
Dati e tarature ottenuti usando olio con viscosità 30 cSt a 50°C Performances and calibrations are carried out by using hydraulic oil with 30 cSt viscosity at 50°C	
Viscosità consigliate Recommended viscosity	10 ÷ 420 cSt
Temperature di lavoro Working temperature	-20 ÷ +90 °C
Filtrazione assoluta Absolute filtration	25 µ

Modello Type	V, C	Pil, M	Portata max Max. flow
OVC-SE-AM-38	3/8" GAS	1/4" GAS	40 l/min 10.5 gpm
OVC-SE-AM-12	1/2" GAS	1/4" GAS	70 l/min 18 gpm



Taratura Setting			
La valvola deve essere tarata almeno 1.3 volte la massima pressione indotta dal carico The valve must be set at least 1.3 times maximum load induced pressure			
Codice Code	Taratura standard Standard setting (Q=5 l/min)	Campo di taratura Adj. Pressure range	Colore molla Spring color
01	100 bar 1450 psi	20+200 bar 290+2900 psi	Bianco White
02	280 bar 4000 psi	50+350 bar 725+5000 psi	Nero Black

Regolazioni - Adjustments

-	C	D
Vite esterna esagono incassato Leakproof hex socket screw	Piombatura Sealing cap	Cappello Cap

Sigla di ordinazione / Ordering code

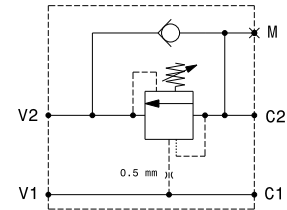
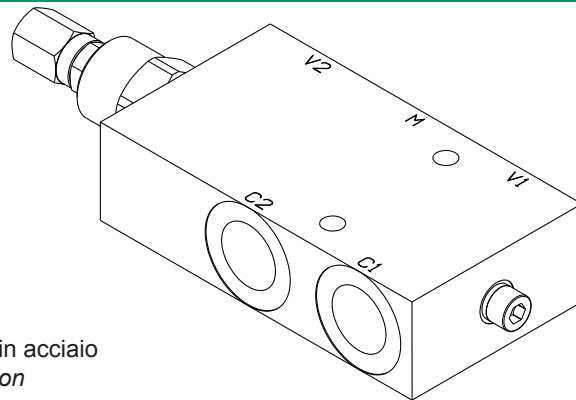
OVC-SE-AM-38 - 02 - - -

Modello Type	Codice taratura Setting code 01, 02	Codice regolazione Adjustment code -, C, D	A Acciaio / Stee
-----------------	---	--	------------------

For flow diagram see
PRESSURE DROP OVERCENTER VALVES (8)

I dati non sono impegnativi, CBF si riserva di apportare modifiche senza preavviso.
The specifications are not binding, CBF reserves the right to introduce modifications without notice.

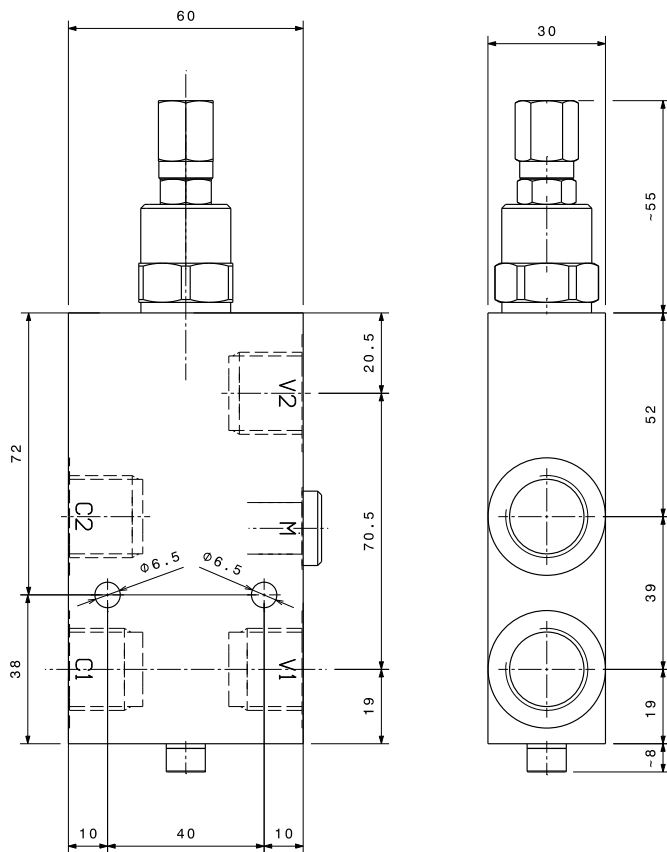
Valvola OVERCENTER semplice effetto in linea
In line, single effect COUNTERBALANCE valve
 mod. OVC-SE-L-PST



Versione corpo in alluminio o in acciaio
Aluminium or steel body version

Pressione massima <i>Max pressure</i>	350 bar 5000 psi
Rapporto di pilotaggio standard <i>Standard pilot ratio</i>	4,25:1
Rapporto di pilotaggio a richiesta <i>Pilot ratio upon request</i>	3:1 8:1 10:1
Dati e tarature ottenuti usando olio con viscosità 30 cSt a 50°C <i>Performances and calibrations are carried out by using hydraulic oil with 30 cSt viscosity at 50°C</i>	
Viscosità consigliate <i>Recommended viscosity</i>	10 ÷ 420 cSt
Temperature di lavoro <i>Working temperature</i>	-20 ÷ +90 °C
Filtrazione assoluta <i>Absolute filtration</i>	25 µ

Modello <i>Type</i>	V1, V2 C1, C2	Portata max <i>Max. flow</i>
OVC-SE-L-PST-38	3/8" GAS	40 l/min 10.5 gpm
OVC-SE-L-PST-12	1/2" GAS	70 l/min 18 gpm



Taratura <i>Setting</i>			
La valvola deve essere tarata almeno 1.3 volte la massima pressione indotta dal carico <i>The valve must be set at least 1.3 times maximum load induced pressure</i>			
Codice <i>Code</i>	Taratura standard <i>Standard setting (Q=5 l/min)</i>	Campo di taratura <i>Adj. Pressure range</i>	Colore molla <i>Spring color</i>
01	100 bar 1450 psi	20+200 bar 290+2900 psi	Bianco White
02	280 bar 4000 psi	50+350 bar 725+5000 psi	Nero Black

Regolazioni - *Adjustments*

- Vite esterna esagono incassato <i>Leakproof hex socket screw</i>	C Piombaturo <i>Sealing cap</i>	D Cappellotto <i>Cap</i>
--	---------------------------------------	--------------------------------

Sigla di ordinazione / *Ordering code*

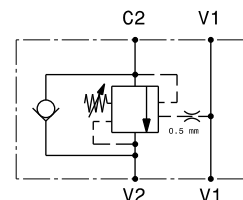
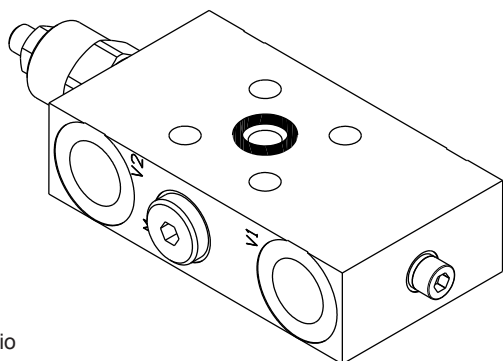
OVC-SE-L-PST-38 - 02 - - -

Modello <i>Type</i>	Codice taratura <i>Setting code</i> 01, 02	Codice regolazione <i>Adjustment code</i> -, C, D	- Alluminio / Aluminium A Acciaio / Steel	For flow diagram see PRESSURE DROP OVERCENTER VALVES (8)
------------------------	--	---	--	---

I dati non sono impegnativi, CBF si riserva di apportare modifiche senza preavviso.
The specifications are not binding, CBF reserves the right to introduce modifications without notice.

Valvola OVERCENTER semplice effetto in linea flangiabile
 In line, single effect COUNTERBALANCE valve – langeable

mod. OVC-SE-L-F30-PST



Corpo in acciaio
 Steel body

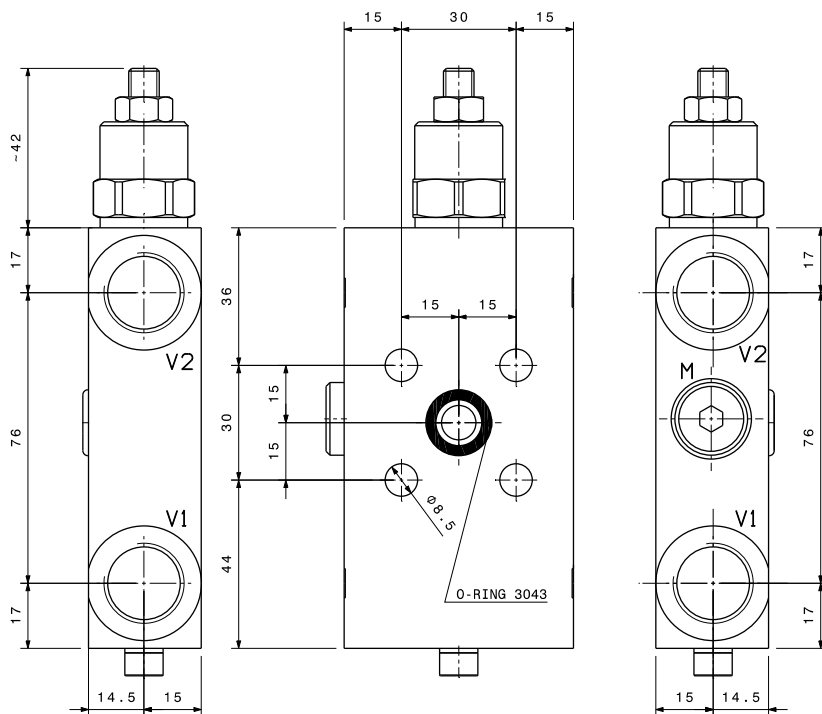
Pressione massima Max pressure	350 bar 5000 psi
Rapporto di pilotaggio standard Standard pilot ratio	4,25:1
Rapporto di pilotaggio a richiesta Pilot ratio upon request	3:1 8:1 10:1

Dati e tarature ottenuti usando olio con viscosità 30 cSt a 50°C
 Performances and calibrations are carried out by using hydraulic oil with 30 cSt viscosity at 50°C

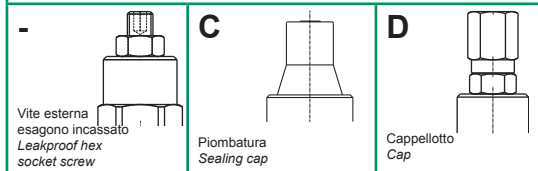
Viscosità consigliate Recommended viscosity	10 ÷ 420 cSt
Temperature di lavoro Working temperature	-20 ÷ +90 °C
Filtrazione assoluta Absolute filtration	25 µ

Modello Type	V1,V2	C2 Ø	Portata max Max. flow
OVC-SE-L-F30-PST-38	3/8" GAS	9	40 l/min 10.5 gpm
OVC-SE-L-F30-PST-12	1/2" GAS	9	70 l/min 18 gpm

Taratura Setting			
La valvola deve essere tarata almeno 1.3 volte la massima pressione indotta dal carico The valve must be set at least 1.3 times maximum load induced pressure			
Codice Code	Taratura standard Standard setting (Q=5 l/min)	Campo di taratura Adj. Pressure range	Colore molla Spring color
01	100 bar 1450 psi	20+200 bar 290+2900 psi	Bianco White
02	280 bar 4000 psi	50+350 bar 725+5000 psi	Nero Black



Regolazioni - Adjustments



Sigla di ordinazione / Ordering code

OVC-SE-L-F30-PST-38 — 02 — - — A

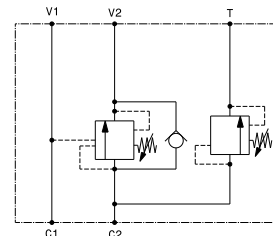
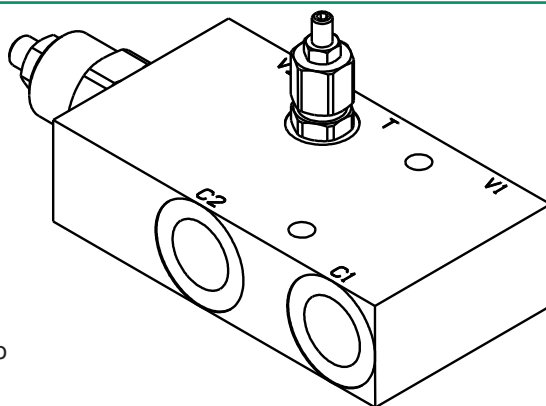
Modello Type	Codice taratura Setting code 01, 02	Codice regolazione Adjustment code -, C, D	A Acciaio / Steel
-----------------	---	--	-------------------

For flow diagram see PRESSURE DROP OVERCENTER VALVES (12)

I dati non sono impegnativi, CBF si riserva di apportare modifiche senza preavviso.
 The specifications are not binding, CBF reserves the right to introduce modifications without notice.

Valvola OVERCENTER semplice effetto in linea con VLP5
In line, single effect COUNTERBALANCE valve with relief valve VLP5

mod. OVC-SE-L-VLP5



Versione corpo in alluminio o in acciaio
Aluminium or steel body version

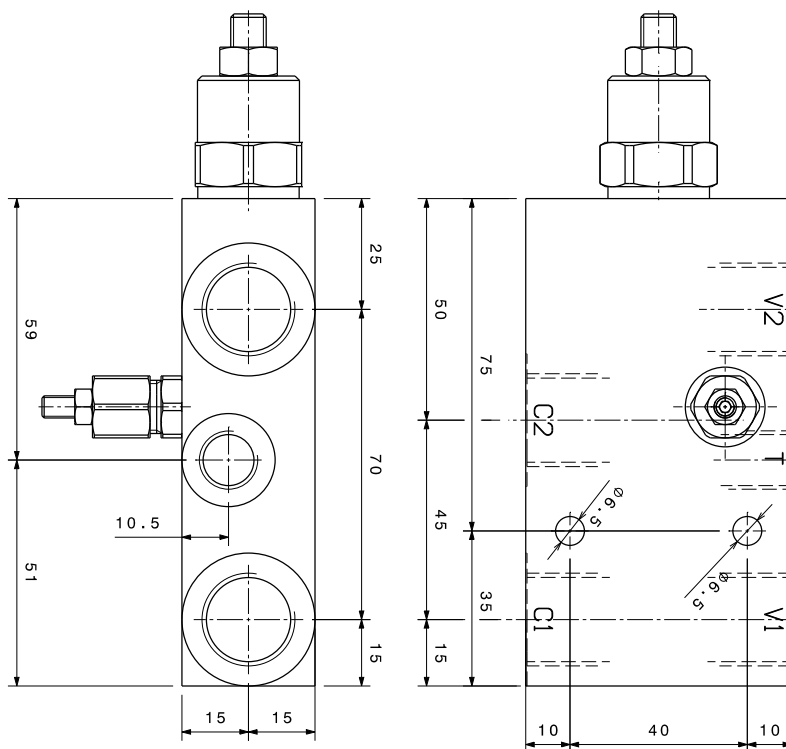
Pressione massima Max pressure	350 bar 5000 psi
Rapporto di pilotaggio standard Standard pilot ratio	4,25:1
Rapporto di pilotaggio a richiesta Pilot ratio upon request	3:1 8:1 10:1

Dati e tarature ottenuti usando olio con viscosità 30 cSt a 50°C
Performances and calibrations are carried out by using hydraulic oil with 30 cSt viscosity at 50°C

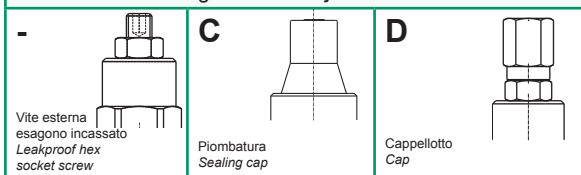
Viscosità consigliate Recommended viscosity	10 ÷ 420 cSt
Temperature di lavoro Working temperature	-20 ÷ +90 °C
Filtrazione assoluta Absolute filtration	25 µ

Modello Type	V1, V2 C1, C2	T	Portata max Max. flow
OVC-SE-L-VLP5-38	3/8" GAS	1/4" GAS	40 l/min 10.5 gpm
OVC-SE-L-VLP5-12	1/2" GAS	1/4" GAS	70 l/min 18 gpm

Taratura Setting	La valvola deve essere tarata almeno 1.3 volte la massima pressione indotta dal carico The valve must be set at least 1.3 times maximum load induced pressure		
Codice Code	Taratura standard Standard setting (Q=5 l/min)	Campo di taratura Adj. Pressure range	Colore molla Spring color
01	100 bar 1450 psi	20÷200 bar 290÷2900 psi	Bianco White
02	280 bar 4000 psi	50÷350 bar 725÷5000 psi	Nero Black



Regolazioni - Adjustments



Sigla di ordinazione / Ordering code

OVC-SE-L-VLP5-38	02	-	-	
Modello Type	Codice taratura Setting code 01, 02	Codice regolazione Adjustment code -, C, D	- Alluminio / Aluminium A Acciaio / Steel	For flow diagram see PRESSURE DROP OVERCENTER VALVES (8)

I dati non sono impegnativi, CBF si riserva di apportare modifiche senza preavviso.
The specifications are not binding, CBF reserves the right to introduce modifications without notice.

LubeTeam Hydraulic S.r.l.

Administration and Headquarter:

Via Tufara Scautieri, 6

83018 - San Martino Valle Caudina (AV)

Office and Warehouse:

S.S. 7 Appia, Km. 237,00

82011 - Airola BN

ITALY

Tel. +39 0823 950 994

Fax +39 0823 412 546

www.lubeteam.it info@lubeteam.it

Italian VAT / C.F. e P.IVA: 01251720627

Follow us



This document is the property of LubeTeam Hydraulic S.r.l. All data reported here are for the exclusive use of the Receiver. Reproduction is not authorized without writing permission, in all or in part of the content of this document, in accordance to Law 633 art. 171, dated April 22, 1941.

Il presente documento è di proprietà della LubeTeam Hydraulic S.r.l. I dati riportati sono per esclusivo del destinatario. La riproduzione, di tutto o in parte, non è autorizzata senza permesso scritto secondo l'art. 171 della L. 633 del 22 Aprile 1941.