

CBF
Valvole di blocco
Semplice Effetto



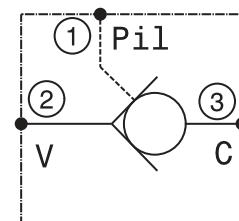
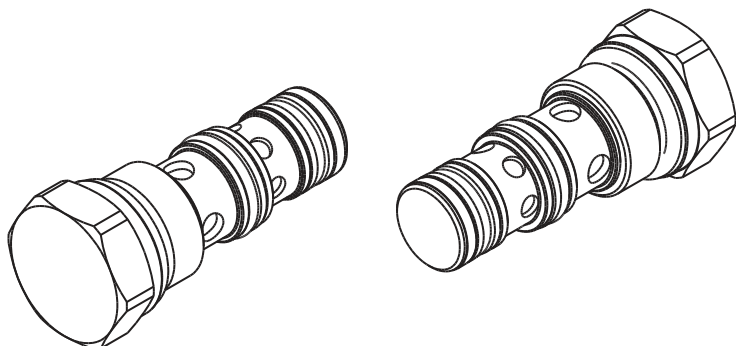
 HYDRAULIC
COMPONENTS
& FLUID CONTAMINATION
CONTROL



All trademarks belong to their respective owners; third party trademarks, product names, trade names, corporate names and company names mentioned may be trademarks of their respective owners or registered trademarks of other companies and are used for instructional purposes and for the benefit of the owner, without any end of Copyright infringement in force.

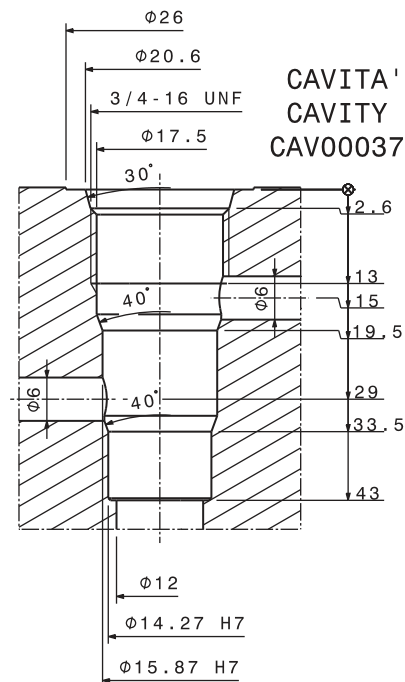
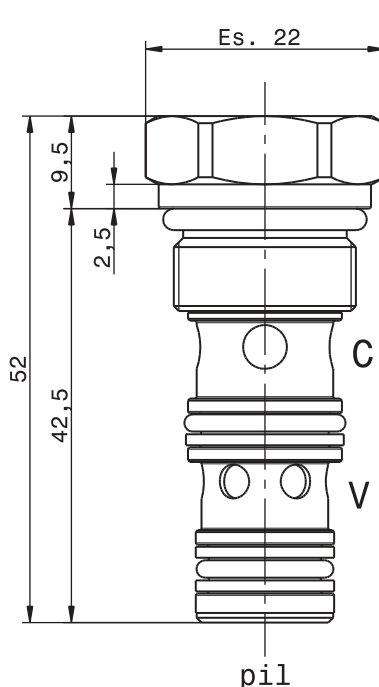
Tutti i marchi riportati appartengono ai legittimi proprietari; marchi di terzi, nomi di prodotti, nomi commerciali, nomi corporativi e società citati possono essere di proprietà dei rispettivi titolari o registrati da altre società e sono stati utilizzati a puro scopo esplicativo e a beneficio del possessore, senza alcun fine di violazione dei diritti di Copyright vigenti.

Valvola unidirezionale pilotata a cartuccia
 Pilot operated check valve – cartridge type
 mod. VBP20-08-C

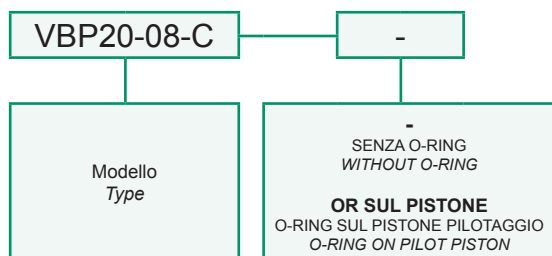


Portata massima Max flow	20 l/min 5.3 gpm
Pressione massima Max pressure	350 bar 5000 psi
Rapporto di pilotaggio Pilot Ratio	3:1
Pressione di apertura Cracking pressure	7 bar 101.5 psi
Coppia di serraggio Installation torque	30 ÷ 35 Nm 22.5 ÷ 26 lbf ft

Dati e tarature ottenuti usando olio con viscosità 30 cSt a 50°C Performances and calibrations are carried out by using hydraulic oil with 30 cSt viscosity at 50°C	
Viscosità consigliate Recommended viscosity	10 ÷ 420 cSt
Temperature di lavoro Working temperature	-20 ÷ +90 °C
Filtrazione assoluta Absolute filtration	25 µ



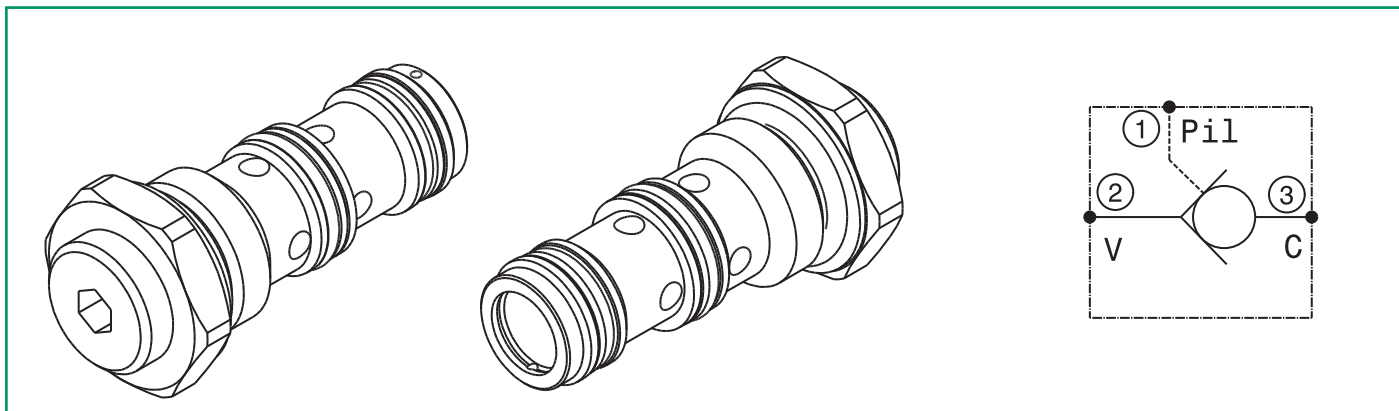
Sigla di ordinazione / Ordering code



For flow diagram see PRESSURE DROP CHECK VALVE (10)

I dati non sono impegnativi, **CBF** si riserva di apportare modifiche senza preavviso.
 The specifications are not binding, **CBF** reserves the right to introduce modifications without notice.

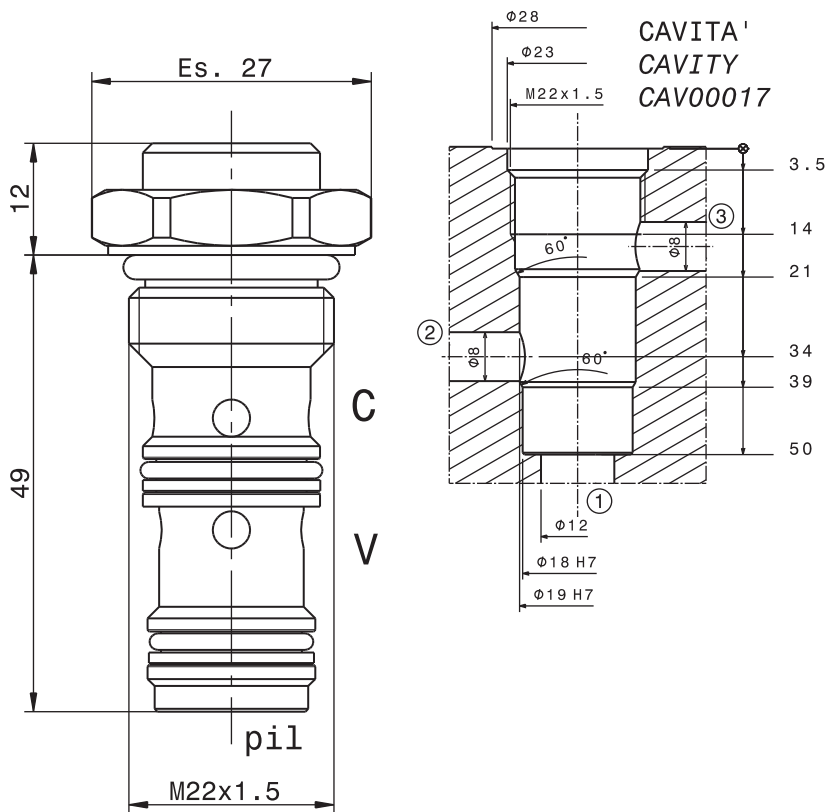
Valvola unidirezionale pilotata a cartuccia
 Pilot operated check valve – cartridge type
 mod. VBP40-C



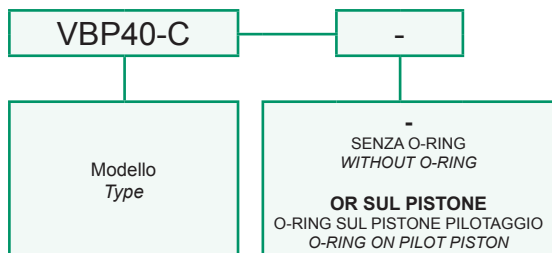
Portata massima Max flow	40 l/min 10.5 gpm
Pressione massima Max pressure	350 bar 5000 psi
Rapporto di pilotaggio Pilot Ratio	3,4:1
Pressione di apertura Cracking pressure	3 bar 43 psi
Coppia di serraggio Installation torque	65 ÷ 70 Nm 49 ÷ 52 lbf ft

Dati e tarature ottenuti usando olio con viscosità 30 cSt a 50°C
 Performances and calibrations are carried out by using hydraulic oil with 30 cSt viscosity at 50°C

Viscosità consigliate Recommended viscosity	10 ÷ 420 cSt
Temperature di lavoro Working temperature	-20 ÷ +90 °C
Filtrazione assoluta Absolute filtration	25 µ

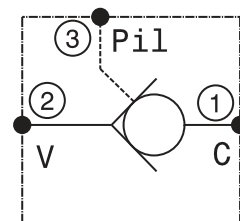
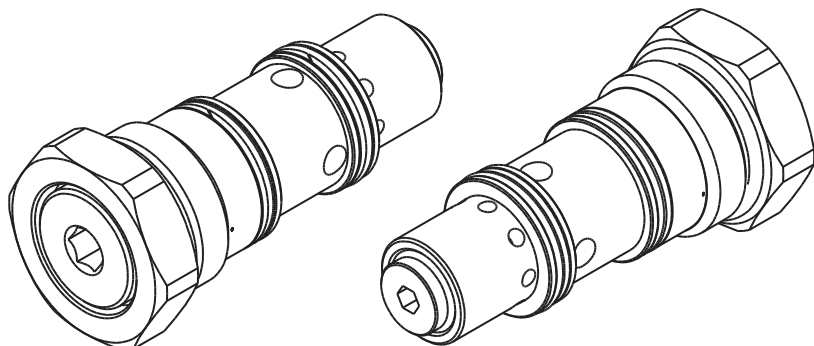


Sigla di ordinazione / Ordering code



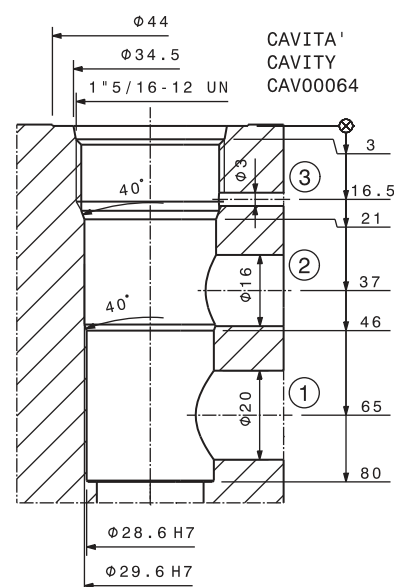
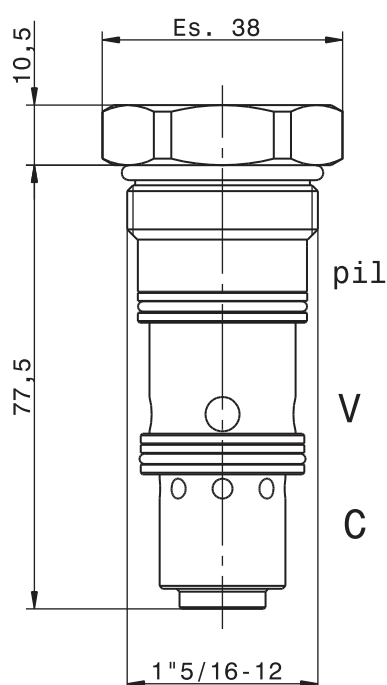
I dati non sono impegnativi, **CBF** si riserva di apportare modifiche senza preavviso.
 The specifications are not binding, **CBF** reserves the right to introduce modifications without notice.

Valvola unidirezionale pilotata a cartuccia
 Pilot operated check valve – cartridge type
 mod. VBP90-C

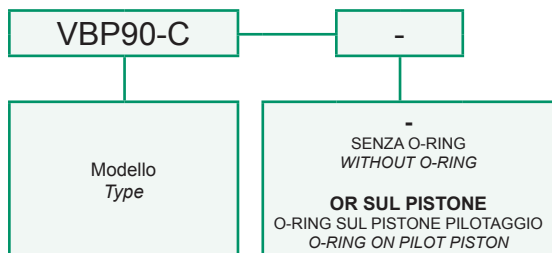


Portata massima Max flow	90 l/min 24 gpm
Pressione massima Max pressure	350 bar 5000 psi
Rapporto di pilotaggio Pilot Ratio	4:1
Pressione di apertura Cracking pressure	0,5 bar 7.2 psi
Coppia di serraggio Installation torque	180 ÷ 200 Nm 135 ÷ 150 lbf ft

Dati e tarature ottenuti usando olio con viscosità 30 cSt a 50°C Performances and calibrations are carried out by using hydraulic oil with 30 cSt viscosity at 50°C	
Viscosità consigliate Recommended viscosity	10 ÷ 420 cSt
Temperature di lavoro Working temperature	-20 ÷ +90 °C
Filtrazione assoluta Absolute filtration	25 µ

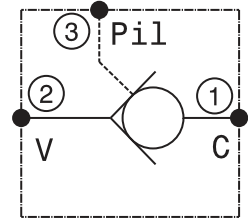
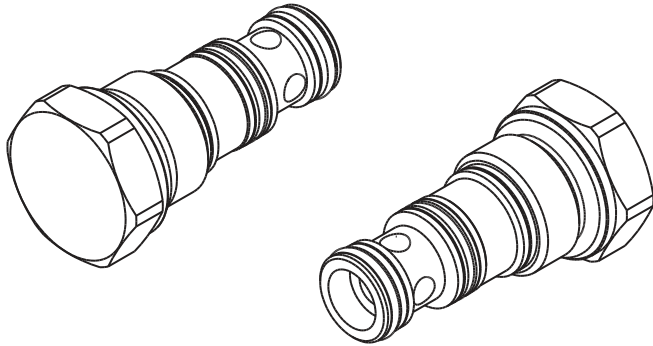


Sigla di ordinazione / Ordering code



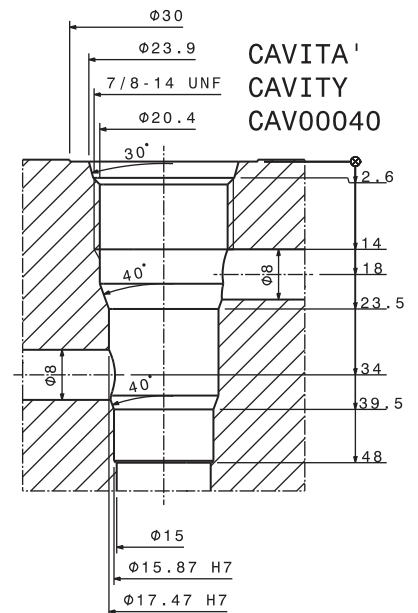
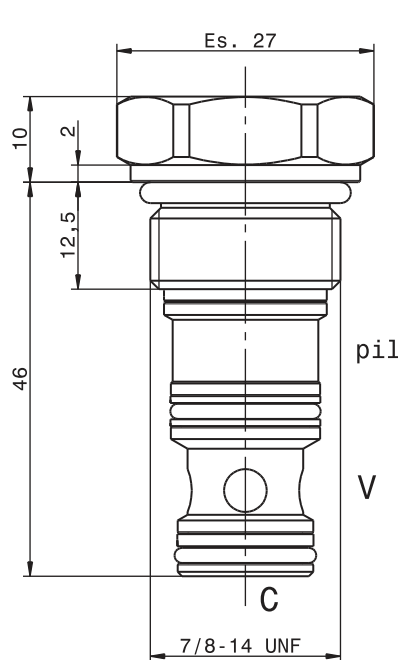
I dati non sono impegnativi, **CBF** si riserva di apportare modifiche senza preavviso.
 The specifications are not binding, **CBF** reserves the right to introduce modifications without notice.

Valvola unidirezionale pilotata a cartuccia
 Pilot operated check valve – cartridge type
 mod. VBP60-10-C-P3

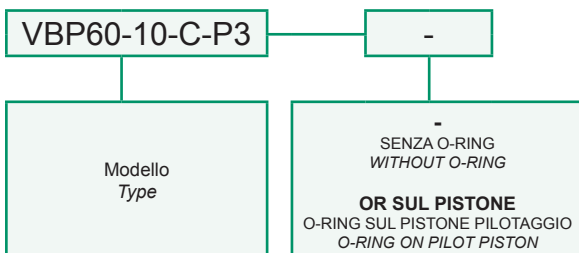


Portata massima <i>Max flow</i>	60 l/min 16 gpm
Pressione massima <i>Max pressure</i>	350 bar 5000 psi
Rapporto di pilotaggio <i>Pilot Ratio</i>	4:1
Pressione di apertura <i>Cracking pressure</i>	1 bar 14 psi
Coppia di serraggio <i>Installation torque</i>	50 ÷ 60 Nm 37 ÷ 45 lbf ft

Dati e tarature ottenuti usando olio con viscosità 30 cSt a 50°C <i>Performances and calibrations are carried out by using hydraulic oil with 30 cSt viscosity at 50°C</i>	
Viscosità consigliate <i>Recommended viscosity</i>	10 ÷ 420 cSt
Temperature di lavoro <i>Working temperature</i>	-20 ÷ +90 °C
Filtrazione assoluta <i>Absolute filtration</i>	25 µ



Sigla di ordinazione / Ordering code

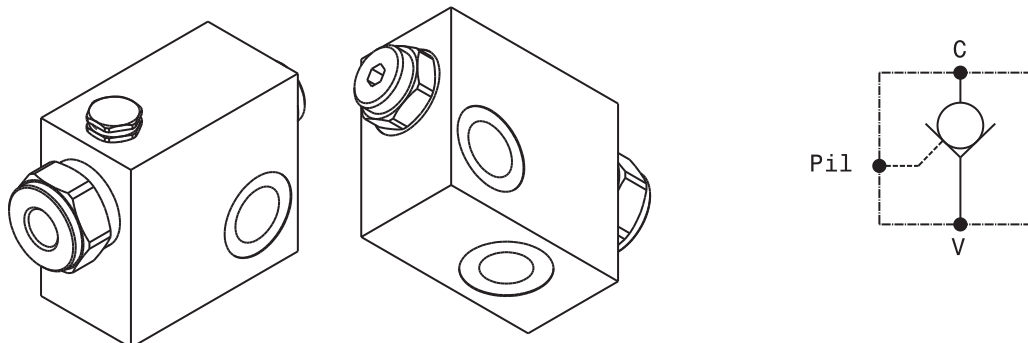


I dati non sono impegnativi, CBF si riserva di apportare modifiche senza preavviso.
 The specifications are not binding, CBF reserves the right to introduce modifications without notice.

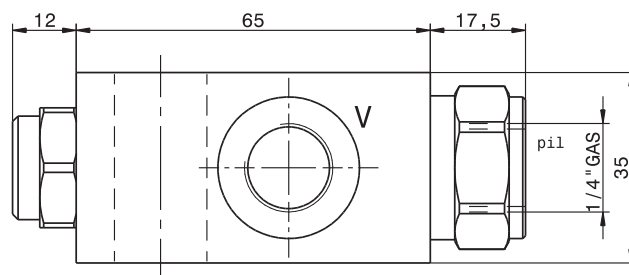
Valvola di blocco semplice effetto flangiabile con pilotaggio separato
Flangeable pilot operated check valve with vented pilot

mod. VBS-F-PS

Corpo in alluminio
Aluminium body

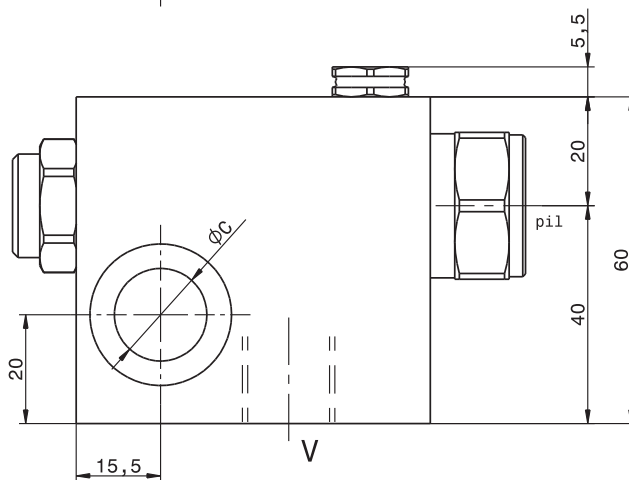


Modello Type	V	C Ø	Rapporto di pilotaggio Pilot ratio	Portata massima Max Flow	Pressione massima Max pressure	Pressione di apertura Cracking pressure
VBS-F-PS-38	3/8" GAS	17	11:1	35 l/min 9 gpm	350 bar 5000 psi	8 bar 115 psi
VBS-F-PS-12	1/2" GAS	21	11:1	50 l/min 13 gpm	350 bar 5000 psi	8 bar 115 psi



Dati e tarature ottenuti usando olio con viscosità 30 cSt a 50°C
Performances and calibrations are carried out by using hydraulic oil with 30 cSt viscosity at 50°C

Viscosità consigliate <i>Recommended viscosity</i>	10 ÷ 420 cSt
Temperature di lavoro <i>Working temperature</i>	-20 ÷ +90 °C
Filtrazione assoluta <i>Absolute filtration</i>	25 µ



Vite cava disponibile a richiesta Nipple screw available upon request	Modello Type	Codice di ordinazione Ordering code
	VBS-F-PS-38	KITV0001
	VBS-F-PS-12	KITV0003

Modello Type	L
VBS-F-PS-38	39
VBS-F-PS-12	39.5

Sigla di ordinazione / Ordering code

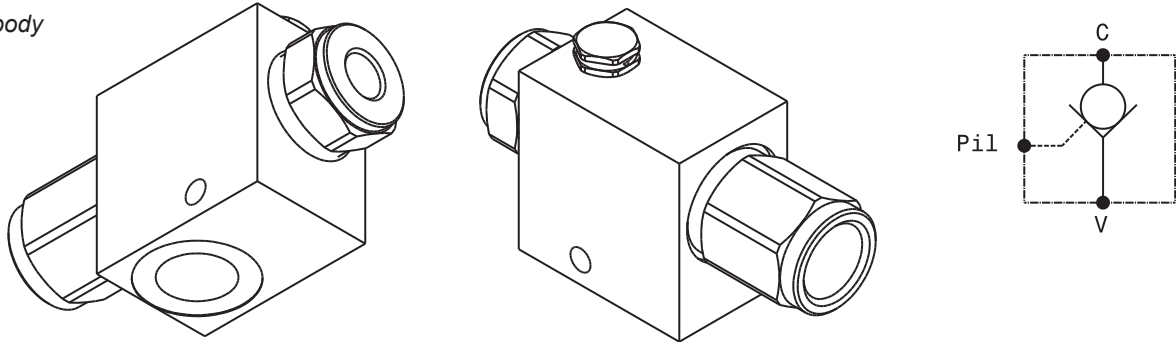
VBS-F-PS-38

Modello
Type

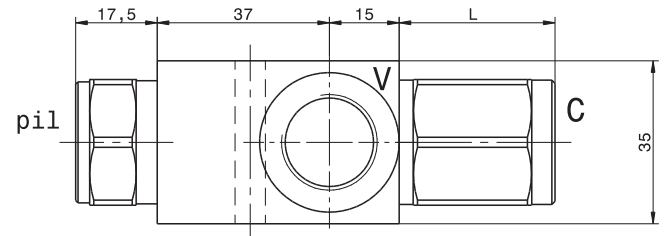
I dati non sono impegnativi, **CBF** si riserva di apportare modifiche senza preavviso.
The specifications are not binding, CBF reserves the right to introduce modifications without notice.

Valvola di blocco semplice effetto con pilotaggio separato
Pilot operated check valve with vented pilot
 mod. VBS-L-PS

Corpo in alluminio
Aluminium body

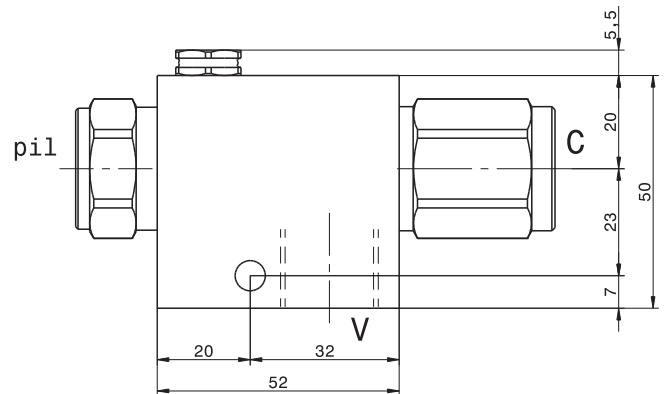


Modello Type	V C	Pil	Rapporto di pilotaggio Pilot ratio	Portata massima Max Flow	Pressione massima Max pressure	Pressione di apertura Cracking pressure
VBS-L-PS-14	1/4" GAS	1/4" GAS	11:1	20 l/min 5.3 gpm	350 bar 5000 psi	3 bar 43 psi
VBS-L-PS-38	3/8" GAS	1/4" GAS	11:1	35 l/min 9 gpm	350 bar 5000 psi	6 bar 87 psi
VBS-L-PS-12	1/2" GAS	1/4" GAS	6.25:1	50 l/min 13 gpm	350 bar 5000 psi	6 bar 87 psi



Dati e tarature ottenuti usando olio con viscosità 30 cSt a 50°C
Performances and calibrations are carried out by using hydraulic oil with 30 cSt viscosity at 50°C

Viscosità consigliate <i>Recommended viscosity</i>	10 ÷ 420 cSt
Temperature di lavoro <i>Working temperature</i>	-20 ÷ +90 °C
Filtrazione assoluta <i>Absolute filtration</i>	25 µ



Modello Type	L
VBS-L-PS-14	24.5
VBS-L-PS-38	25.5
VBS-L-PS-12	33.5

Sigla di ordinazione / Ordering code

VBS-L-PS-38

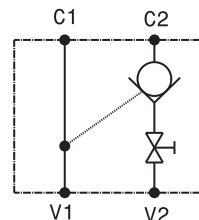
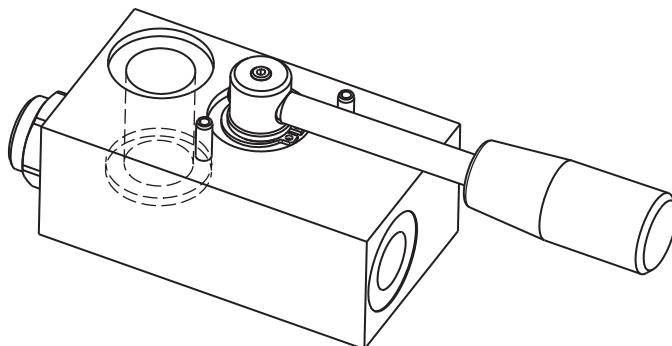
Modello
Type

I dati non sono impegnativi, **CBF** si riserva di apportare modifiche senza preavviso.
The specifications are not binding, CBF reserves the right to introduce modifications without notice.

Valvola di blocco pilotata a semplice effetto flangiabile con rubinetto manuale - destro
Flangeable, single effect, pilot operated check valve with manual lever - RH

mod. **VBS-F-R-D-38**

Corpo in alluminio
Aluminium body

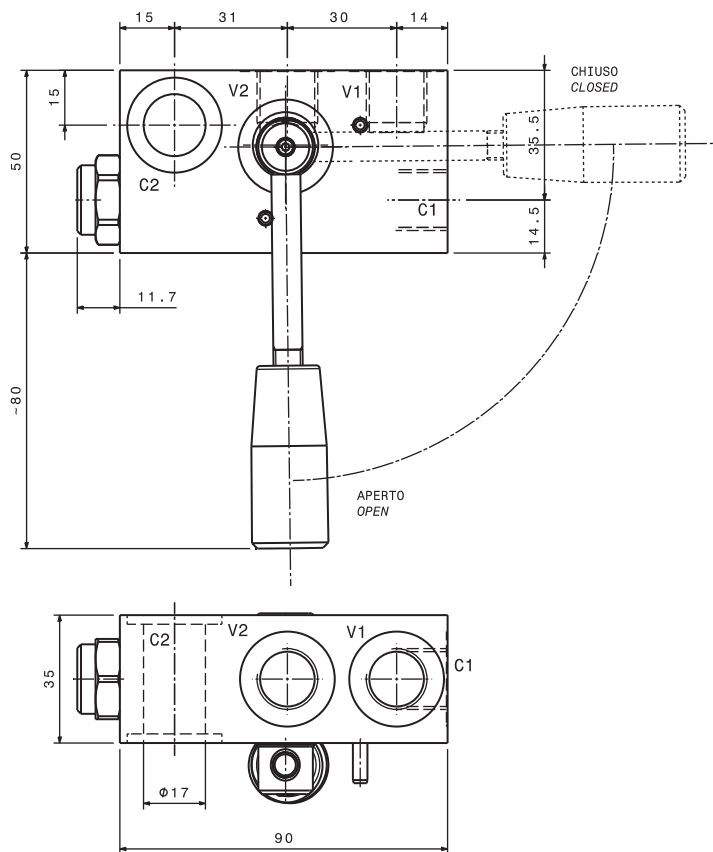


Portata massima <i>Max flow</i>	35 l/min 9 gpm
Pressione massima <i>Max pressure</i>	300 bar 4300 psi
Pressione di apertura <i>Cracking pressure</i>	3 bar 43 psi
Rapporto di pilotaggio <i>Pilot Ratio</i>	4:1

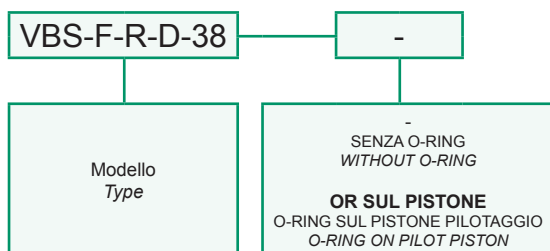
Dati e tarature ottenuti usando olio con viscosità 30 cSt a 50°C
Performances and calibrations are carried out by using hydraulic oil with 30 cSt viscosity at 50°C

Viscosità consigliate <i>Recommended viscosity</i>	10 ÷ 420 cSt
Temperature di lavoro <i>Working temperature</i>	-20 ÷ +90 °C
Filtrazione assoluta <i>Absolute filtration</i>	25 µ

Vite cava disponibile a richiesta Nipple screw available upon request	Codice di ordinazione <i>Ordering code</i>
	KITV0001



Sigla di ordinazione / Ordering code

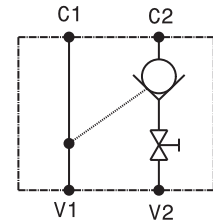
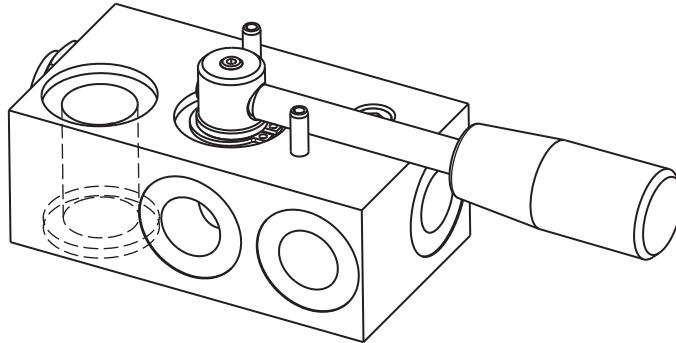


I dati non sono impegnativi, **CBF** si riserva di apportare modifiche senza preavviso.
The specifications are not binding, CBF reserves the right to introduce modifications without notice.

Valvola di blocco pilotata a semplice effetto flangiabile con rubinetto manuale - sinistro
Flangeable, single effect, pilot operated check valve with manual lever - LH

mod. **VBS-F-R-S-38**

Corpo in alluminio
Aluminium body

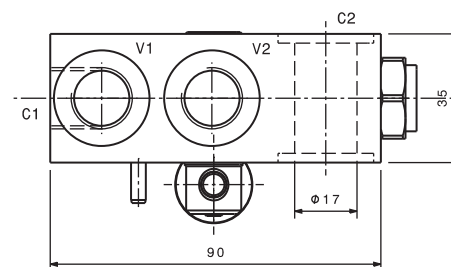
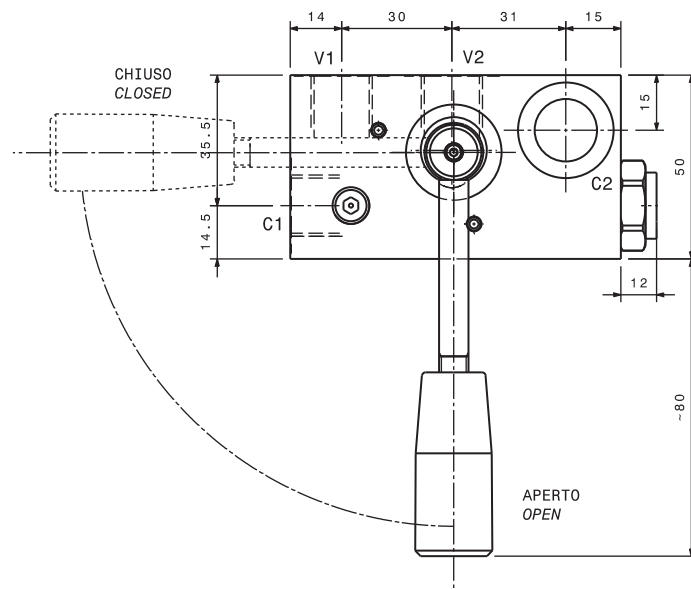


Portata massima <i>Max flow</i>	35 l/min 9 gpm
Pressione massima <i>Max pressure</i>	300 bar 4300 psi
Pressione di apertura <i>Cracking pressure</i>	3 bar 43 psi
Rapporto di pilotaggio <i>Pilot Ratio</i>	4:1

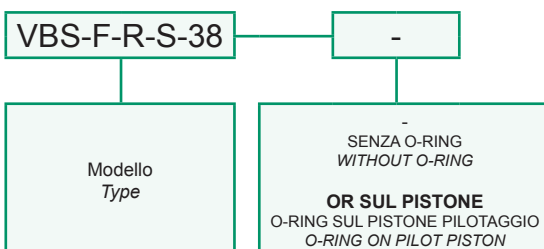
Dati e tarature ottenuti usando olio con viscosità 30 cSt a 50°C
Performances and calibrations are carried out by using hydraulic oil with 30 cSt viscosity at 50°C

Viscosità consigliate <i>Recommended viscosity</i>	10 ÷ 420 cSt
Temperature di lavoro <i>Working temperature</i>	-20 ÷ +90 °C
Filtrazione assoluta <i>Absolute filtration</i>	25 µ

Vite cava disponibile a richiesta <i>Nipple screw available upon request</i>	Codice di ordinazione <i>Ordering code</i>
	KITV0001



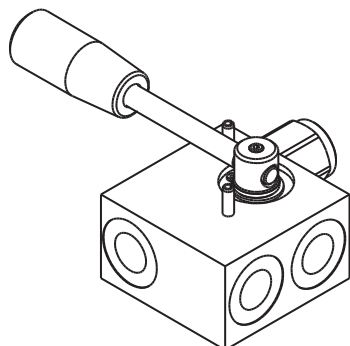
Sigla di ordinazione / Ordering code



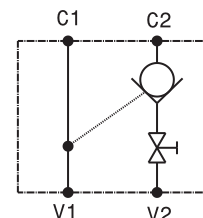
I dati non sono impegnativi, **CBF** si riserva di apportare modifiche senza preavviso.
The specifications are not binding, CBF reserves the right to introduce modifications without notice.

Valvola di blocco pilotata a semplice effetto con rubinetto manuale, tenuta a sfera o a cono - destro
 Single effect, pilot operated check valve with manual lever, ball and poppet type - RH

mod. VBS-R-D



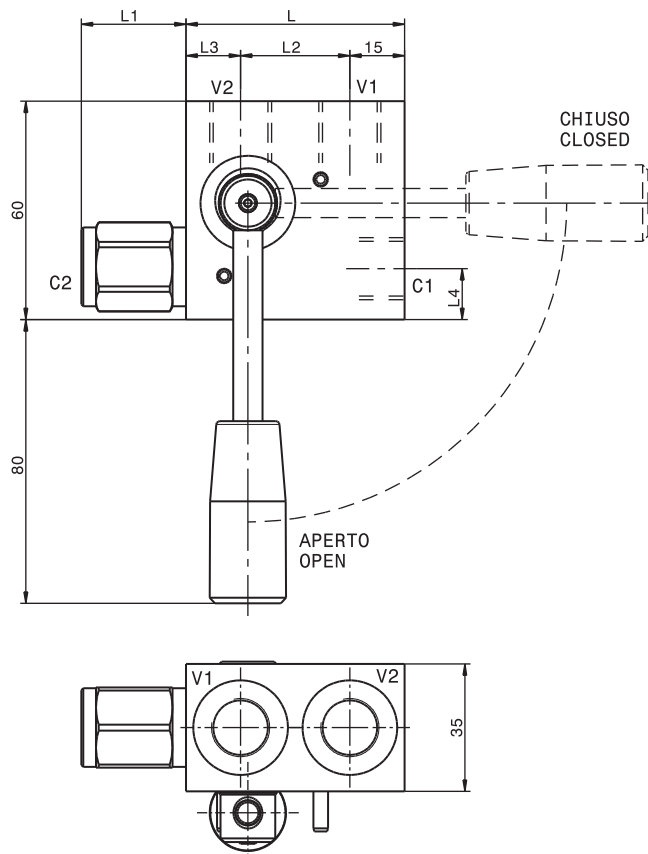
Corpo in alluminio
 Aluminium body



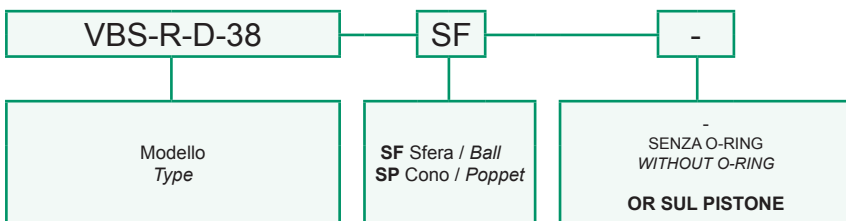
Modello Type	V	Rapporto di pilotaggio Pilot ratio	Portata massima Max Flow	Pressione massima Max pressure	Pressione di apertura Cracking pressure
VBS-R-D-38	3/8" GAS	4:1	35 l/min 9 gpm	300 bar 4300 psi	3 bar 43 psi
VBS-R-D-12	1/2" GAS	4:1	50 l/min 13 gpm	300 bar 4300 psi	1 bar 14.5 psi

Dati e tarature ottenuti usando olio con viscosità 30 cSt a 50°C
 Performances and calibrations are carried out by using hydraulic oil with 30 cSt viscosity at 50°C

Viscosità consigliate Recommended viscosity	10 ÷ 420 cSt
Temperature di lavoro Working temperature	-20 ÷ +90 °C
Filtrazione assoluta Absolute filtration	25 µ



Sigla di ordinazione / Ordering code



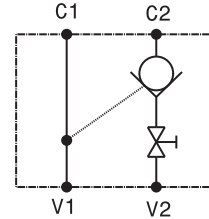
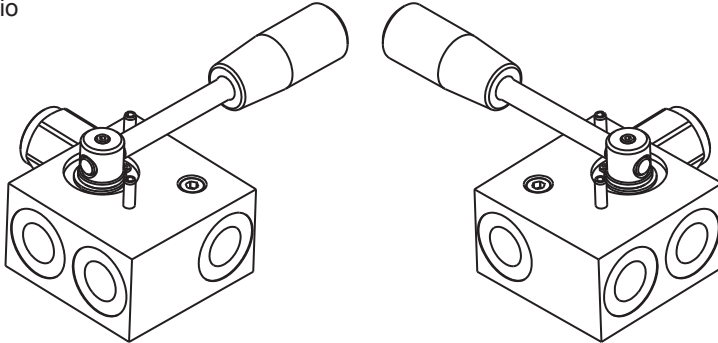
Dimensioni Dimensions	L	L1	L2	L3	L4
VBS-R-D-38	60	29	30	15	14
VBS-R-D-12	70	35	35	20	15

I dati non sono impegnativi, CBF si riserva di apportare modifiche senza preavviso.
 The specifications are not binding, CBF reserves the right to introduce modifications without notice.

Valvola di blocco pilotata a semplice effetto con rubinetto manuale, tenuta a sfera o a cono - sinistro
 Single effect, pilot operated check valve with manual lever, ball and poppet type - LH

mod. VBS-R-S

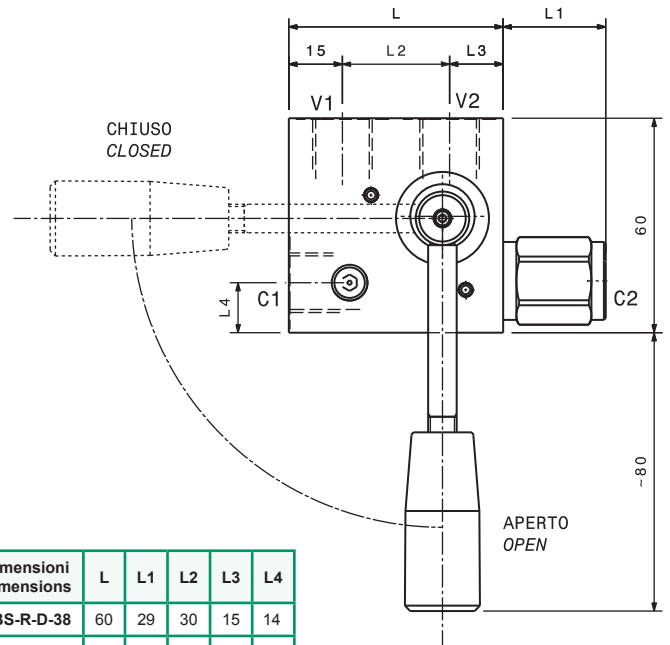
Corpo in alluminio
 Aluminium body



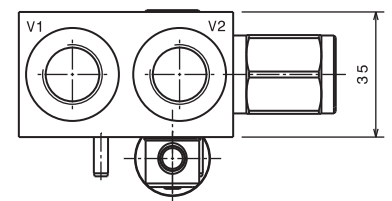
Modello Type	V	Rapporto di pilotaggio Pilot ratio	Portata massima Max Flow	Pressione massima Max pressure	Pressione di apertura Cracking pressure
VBS-R-S-38	3/8" GAS	4:1	35 l/min 9 gpm	300 bar 4300 psi	3 bar 43 psi
VBS-R-S-12	1/2" GAS	4:1	50 l/min 13 gpm	300 bar 4300 psi	1 bar 14.5 psi

Dati e tarature ottenuti usando olio con viscosità 30 cSt a 50°C
 Performances and calibrations are carried out by using hydraulic oil with 30 cSt viscosity at 50°C

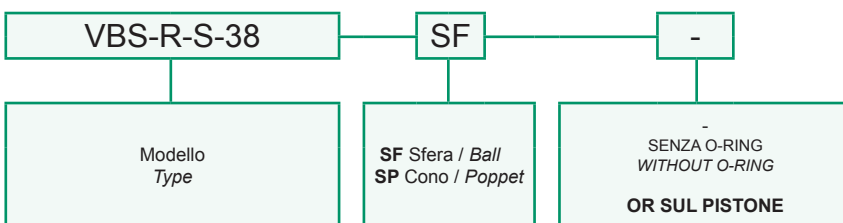
Viscosità consigliate Recommended viscosity	10 ÷ 420 cSt
Temperature di lavoro Working temperature	-20 ÷ +90 °C
Filtrazione assoluta Absolute filtration	25 µ



Dimensioni Dimensions	L	L1	L2	L3	L4
VBS-R-D-38	60	29	30	15	14
VBS-R-D-12	70	35	35	20	15



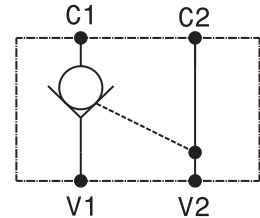
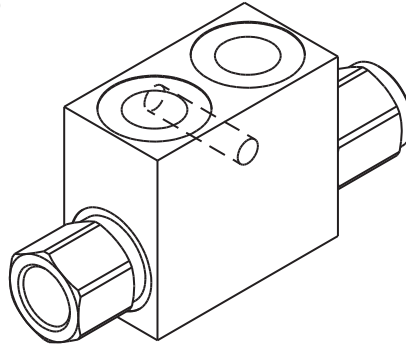
Sigla di ordinazione / Ordering code



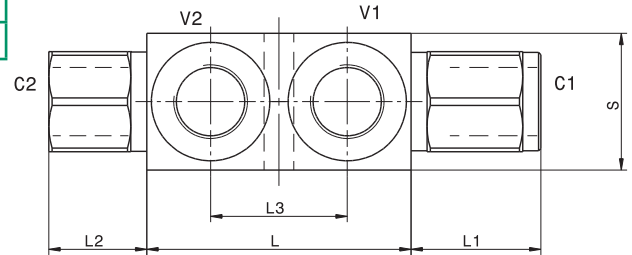
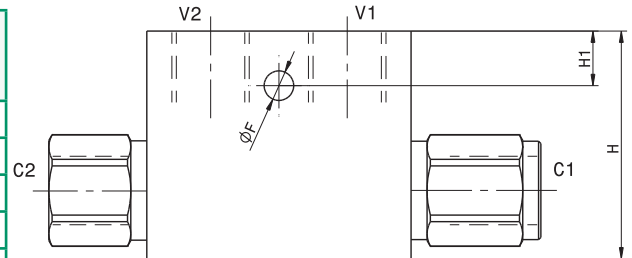
I dati non sono impegnativi, CBF si riserva di apportare modifiche senza preavviso.
 The specifications are not binding, CBF reserves the right to introduce modifications without notice.

Valvola di blocco pilotata a semplice effetto a sfera o a cono
Single effect, pilot operated check valve, ball or poppet type
 mod. **VBS-SF** (sfera – ball) / **VBS-SP** (cono – poppet)

Versione con corpo in alluminio o in acciaio
Aluminum or steel body version



Modello Type	Rapporto di pilotaggio Pilot ratio	Portata massima Max Flow	Pressione massima Max pressure	Pressione di apertura Cracking pressure
VBS-14-SF	4:1	20 l/min 5.3 gpm	350 bar 5000 psi	3 bar 43 psi
VBS-38-SF	4:1	35 l/min 9 gpm	350 bar 5000 psi	3 bar 43 psi
VBS-12-SF	3:1	50 l/min 13 gpm	350 bar 5000 psi	1 bar 14.5 psi
VBS-14-SP	4:1	20 l/min 5.3 gpm	350 bar 5000 psi	3 bar 43 psi
VBS-38-SP	4:1	35 l/min 9 gpm	350 bar 5000 psi	3 bar 43 psi
VBS-12-SP	3:1	50 l/min 13 gpm	350 bar 5000 psi	1 bar 14.5 psi
VBS-34-SP	4:1	80 l/min 21 gpm	250 bar 3600 psi	0.5 bar 7.2 psi

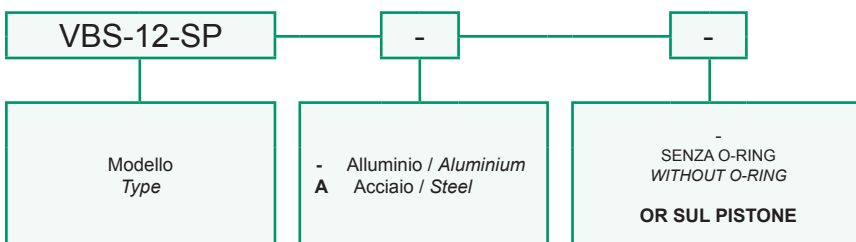


Dati e tarature ottenuti usando olio con viscosità 30 cSt a 50°C
Performances and calibrations are carried out by using hydraulic oil with 30 cSt viscosity at 50°C

Viscosità consigliate <i>Recommended viscosity</i>	10 ÷ 420 cSt
Temperature di lavoro <i>Working temperature</i>	-20 ÷ +90 °C
Filtrazione assoluta <i>Absolute filtration</i>	25 µ

Dimensioni Dimensions	C V	L	L1	L2	L3	H	H1	S	F
VBS-14-SF	1/4" GAS	58	27	22	35	40	12	25	6.5
VBS-38-SF	3/8" GAS	58	29	22	30	50	12	30	6.5
VBS-12-SF	1/2" GAS	70	35	26	35	50	12	35	6.5
VBS-14-SP	1/4" GAS	58	27	22	35	40	12	25	6.5
VBS-38-SP	3/8" GAS	58	29	22	30	50	12	30	6.5
VBS-12-SP	1/2" GAS	70	35	26	35	50	12	35	6.5
VBS-34-SP	3/4" GAS	100	40	40	50	60	15	40	8.5

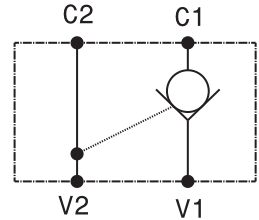
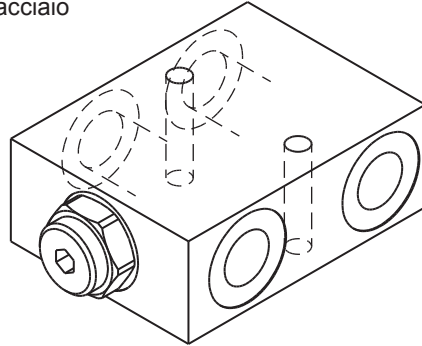
Sigla di ordinazione / Ordering code



I dati non sono impegnativi, **CBF** si riserva di apportare modifiche senza preavviso.
The specifications are not binding, CBF reserves the right to introduce modifications without notice.

Valvola di blocco pilotata a semplice effetto in linea
In line, single effect, pilot operated check valve
mod. VBS-L

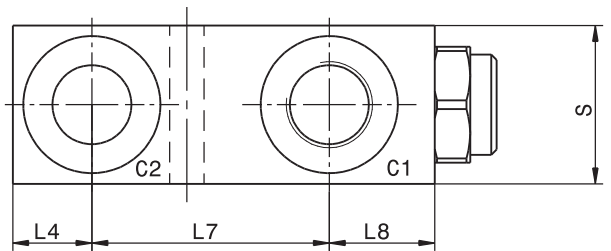
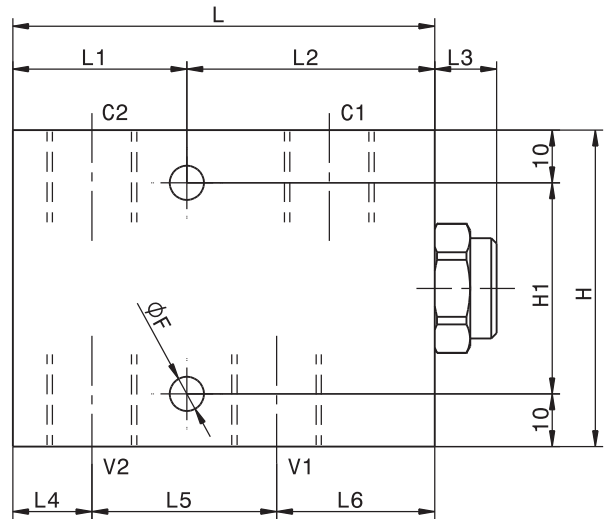
Versione con corpo in alluminio o in acciaio
Aluminum or steel body version



Modello Type	V C	Rapporto di pilotaggio Pilot ratio	Portata massima Max Flow	Pressione massima Max pressure	Pressione di apertura Cracking pressure
VBS-L-14	1/4" GAS	4:1	20 l/min 5.3 gpm	350 bar 5000 psi	3 bar 43 psi
VBS-L-38	3/8" GAS	4:1	35 l/min 9 gpm	350 bar 5000 psi	3 bar 43 psi
VBS-L-12	1/2" GAS	4:1	50 l/min 13 gpm	350 bar 5000 psi	2 bar 29 psi
VBS-L-34	3/4" GAS	4:1	80 l/min 21 gpm	250 bar 3600 psi	2 bar 29 psi

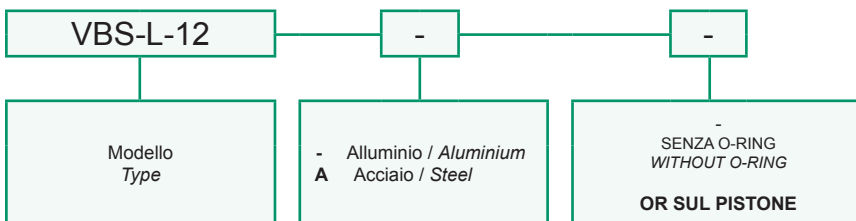
Dati e tarature ottenuti usando olio con viscosità 30 cSt a 50°C
Performances and calibrations are carried out by using hydraulic oil with 30 cSt viscosity at 50°C

Viscosità consigliate Recommended viscosity	10 ÷ 420 cSt
Temperature di lavoro Working temperature	-20 ÷ +90 °C
Filtrazione assoluta Absolute filtration	25 µ



Dimensioni Dimensions	L	L1	L2	L3	L4	L5	L6	L7	L8	H	H1	S	F
VBS-L-14	80	33	47	12	15	31	34	45	20	60	40	30	6.5
VBS-L-38	80	33	47	12	15	35	30	45	20	60	40	30	6.5
VBS-L-12	80	33	47	12	15	35	30	45	20	60	40	35	8.5
VBS-L-34	100	45	55	21	22.5	45	32.5	55	22.5	70	50	40	8.5

Sigla di ordinazione / Ordering code

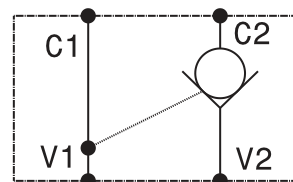
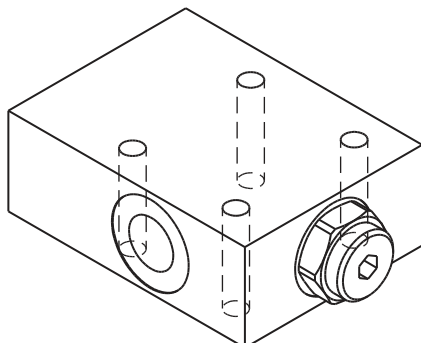


I dati non sono impegnativi, **CBF** si riserva di apportare modifiche senza preavviso.
The specifications are not binding, CBF reserves the right to introduce modifications without notice.

Valvola di blocco pilotata a semplice effetto flangiabile
Flangeable, single effect, pilot operated check valve

mod. VBS-L-F

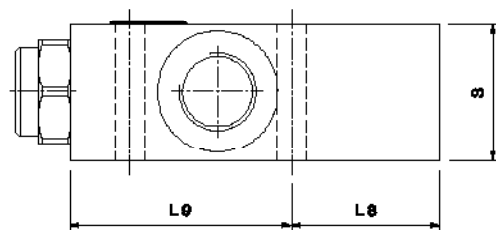
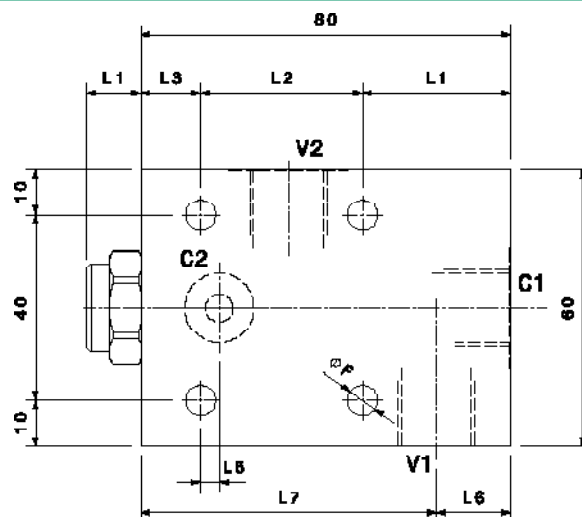
Corpo in alluminio o acciaio
Steel or aluminium body



Modello Type	V C	Rapporto di pilotaggio Pilot ratio	Portata massima Max Flow	Pressione massima Max pressure	Pressione di apertura Cracking pressure
VBS-L-F-38	3/8" GAS	4:1	35 l/min 9 gpm	350 bar 5000 psi	3 bar 43 psi
VBS-L-F-12	1/2" GAS	4:1	50 l/min 13 gpm	350 bar 5000 psi	2 bar 29 psi

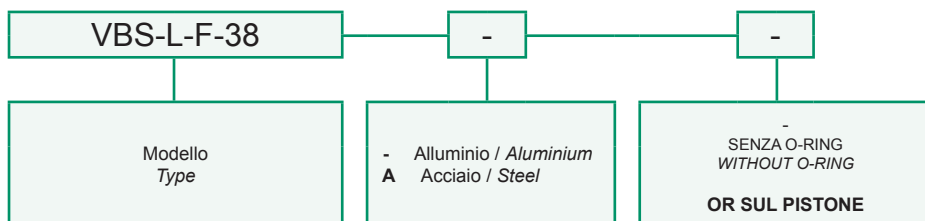
Dati e tarature ottenuti usando olio con viscosità 30 cSt a 50°C
Performances and calibrations are carried out by using hydraulic oil with 30 cSt viscosity at 50°C

Viscosità consigliate Recommended viscosity	10 ÷ 420 cSt
Temperature di lavoro Working temperature	-20 ÷ +90 °C
Filtrazione assoluta Absolute filtration	25 µ



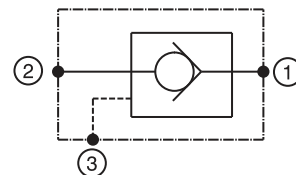
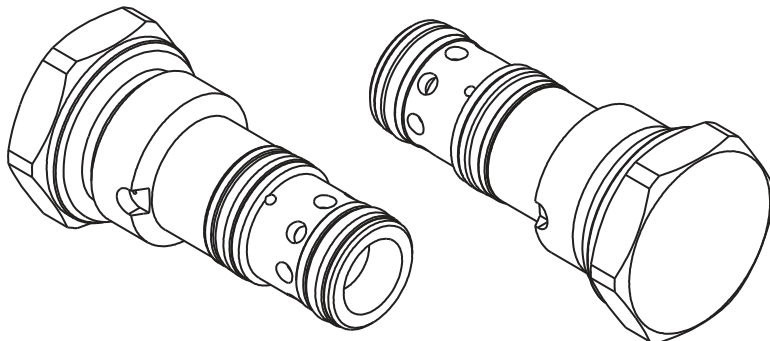
Dimensioni Dimensions	L	L1	L2	L3	L4	L5	L6	L7	L8	L9	S	F
VBS-L-F-38	80	32	35	13	12	4	16	64	48	32	30	6.5
VBS-L-F-12	95	40	40	15	6.5	7.5	19	76	57	38	35	8.5

Sigla di ordinazione / Ordering code



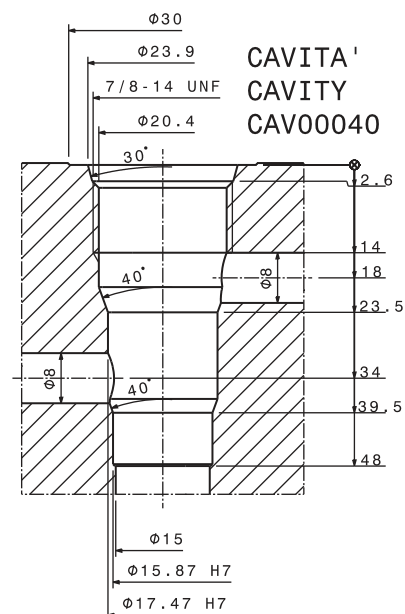
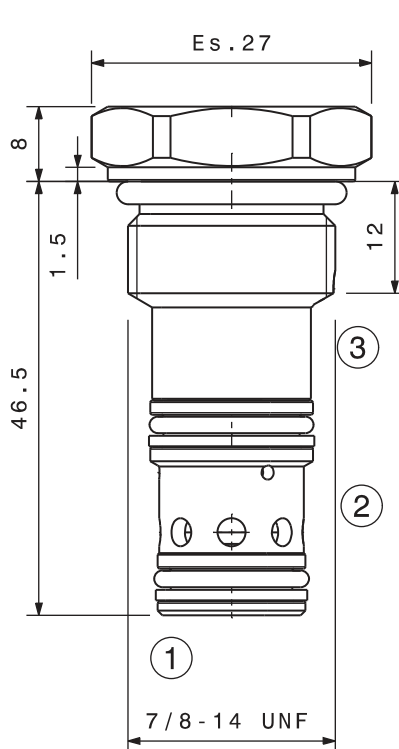
I dati non sono impegnativi, **CBF** si riserva di apportare modifiche senza preavviso.
The specifications are not binding, CBF reserves the right to introduce modifications without notice.

Valvola di blocco pilotata in chiusura a cartuccia
Check valve, pilot to close – cartridge type
mod. VBPC-10-C

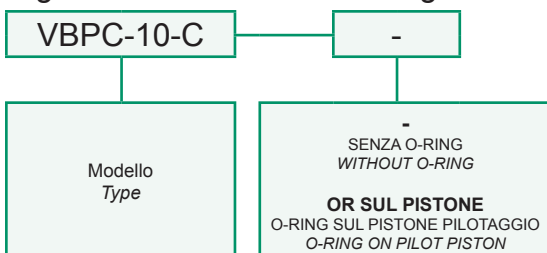


Portata massima <i>Max flow</i>	60 l/min 16 gpm
Pressione massima <i>Max pressure</i>	350 bar 5000 psi
Rapporto di pilotaggio <i>Pilot Ratio</i>	1,5:1
Pressione di apertura <i>Cracking pressure</i>	3,5 bar 50 psi
Coppia di serraggio <i>Installation torque</i>	40 ÷ 45 Nm 30 ÷ 34 lbf ft

Dati e tarature ottenuti usando olio con viscosità 30 cSt a 50°C <i>Performances and calibrations are carried out by using hydraulic oil with 30 cSt viscosity at 50°C</i>	
Viscosità consigliate <i>Recommended viscosity</i>	10 ÷ 420 cSt
Temperature di lavoro <i>Working temperature</i>	-20 ÷ +90 °C
Filtrazione assoluta <i>Absolute filtration</i>	25 µ

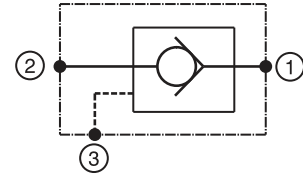
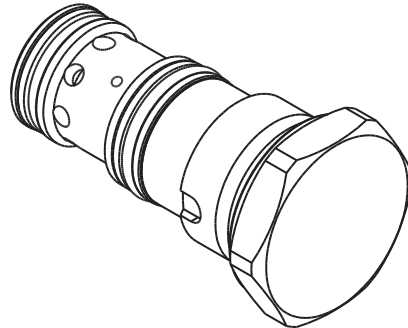
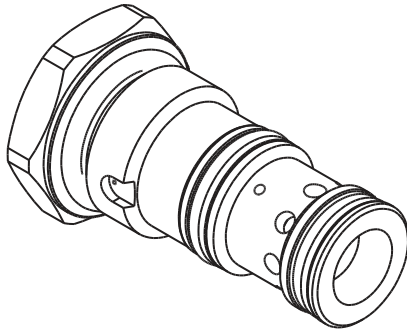


Sigla di ordinazione / Ordering code



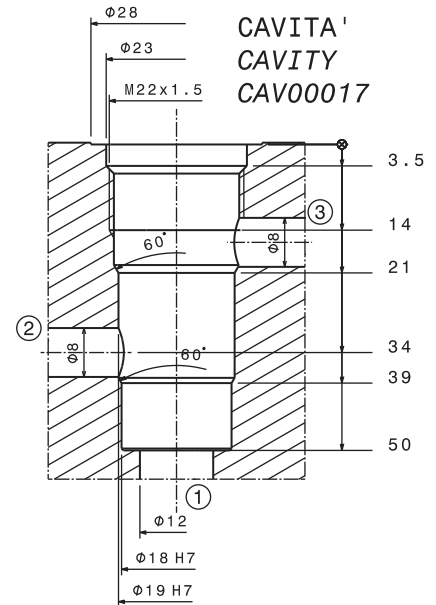
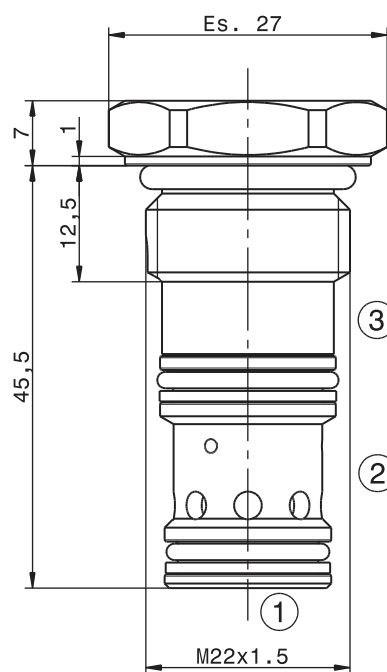
I dati non sono impegnativi, **CBF** si riserva di apportare modifiche senza preavviso.
The specifications are not binding, CBF reserves the right to introduce modifications without notice.

Valvola di blocco pilotata in chiusura a cartuccia
 Check valve, pilot to close – cartridge type
 mod. VBPC-22-C

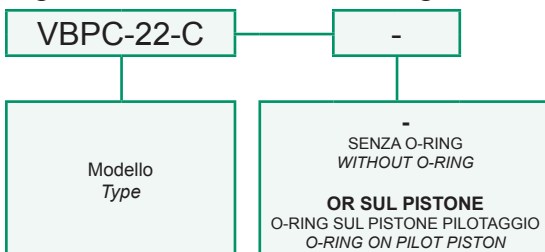


Portata massima Max flow	60 l/min 16 gpm
Pressione massima Max pressure	350 bar 5000 psi
Rapporto di pilotaggio Pilot Ratio	1,5:1
Pressione di apertura Cracking pressure	3,5 bar 50 psi
Coppia di serraggio Installation torque	40 ÷ 45 Nm 30 ÷ 34 lbf ft

Dati e tarature ottenuti usando olio con viscosità 30 cSt a 50°C Performances and calibrations are carried out by using hydraulic oil with 30 cSt viscosity at 50°C	
Viscosità consigliate Recommended viscosity	10 ÷ 420 cSt
Temperature di lavoro Working temperature	-20 ÷ +90 °C
Filtrazione assoluta Absolute filtration	25 µ

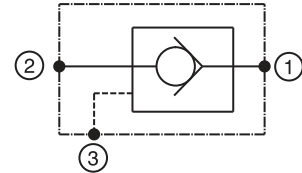
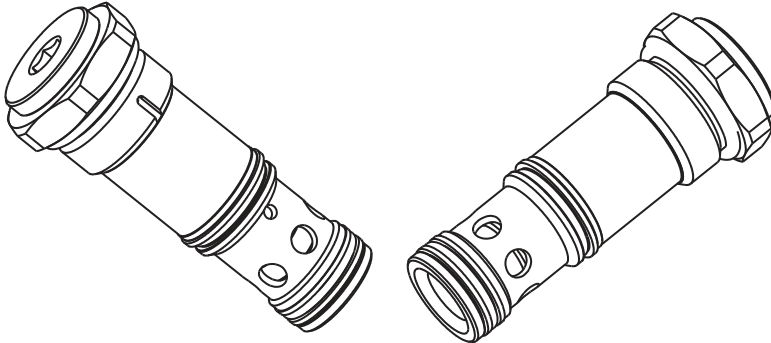


Sigla di ordinazione / Ordering code



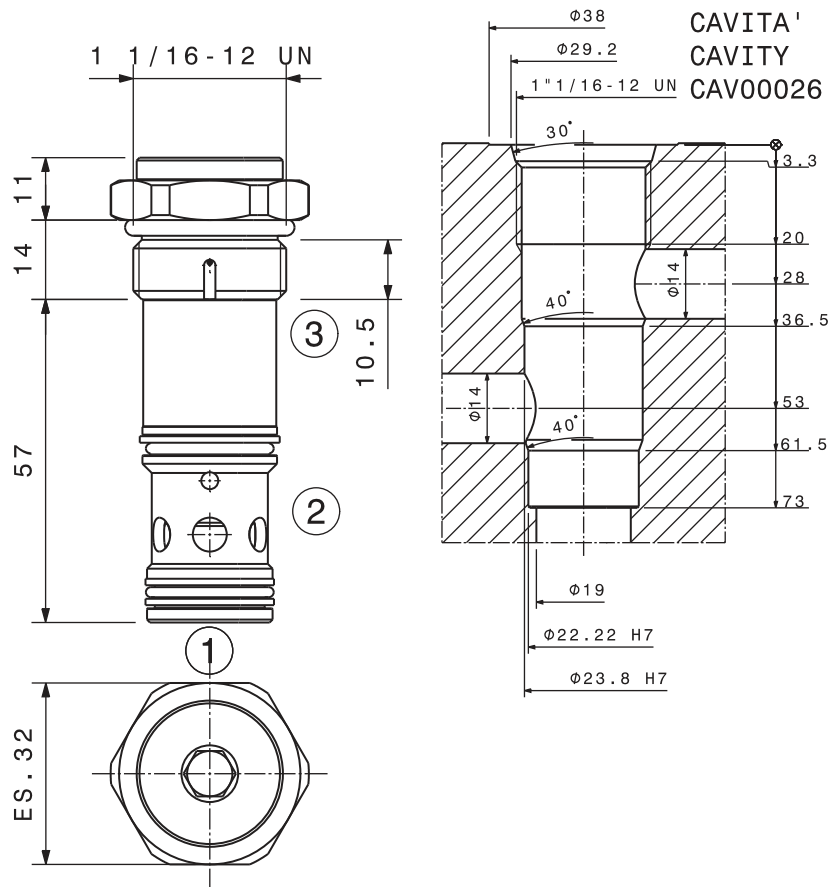
I dati non sono impegnativi, **CBF** si riserva di apportare modifiche senza preavviso.
 The specifications are not binding, **CBF** reserves the right to introduce modifications without notice.

Valvola di blocco pilotata in chiusura a cartuccia
 Check valve, pilot to close – cartridge type
 mod. VBPC-12-C

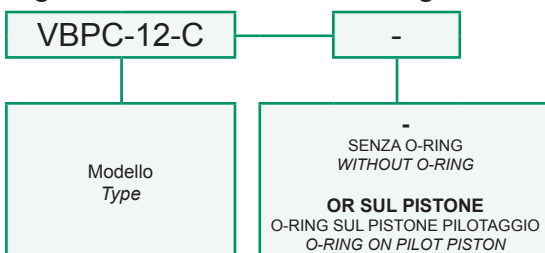


Portata massima Max flow	110 l/min 29 gpm
Pressione massima Max pressure	350 bar 5000 psi
Rapporto di pilotaggio Pilot Ratio	1,9:1
Pressione di apertura Cracking pressure	1 bar 14.5 psi
Coppia di serraggio Installation torque	110 ÷ 120 Nm 82 ÷ 90 lbf ft

Dati e tarature ottenuti usando olio con viscosità 30 cSt a 50°C Performances and calibrations are carried out by using hydraulic oil with 30 cSt viscosity at 50°C	
Viscosità consigliate Recommended viscosity	10 ÷ 420 cSt
Temperature di lavoro Working temperature	-20 ÷ +90 °C
Filtrazione assoluta Absolute filtration	25 µ



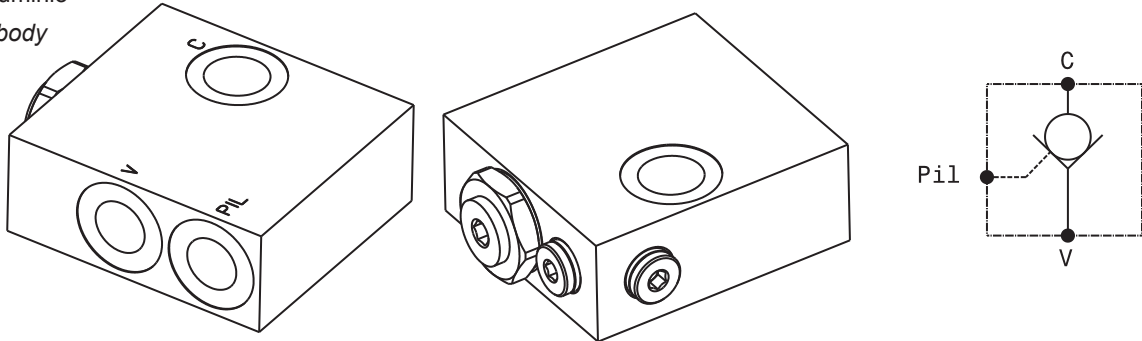
Sigla di ordinazione / Ordering code



I dati non sono impegnativi, **CBF** si riserva di apportare modifiche senza preavviso.
 The specifications are not binding, **CBF** reserves the right to introduce modifications without notice.

Valvola di blocco pilotata semplice effetto flangiabile
Flangeable pilot operated check valve
 mod. VBS-F-38

Corpo in alluminio
Aluminium body

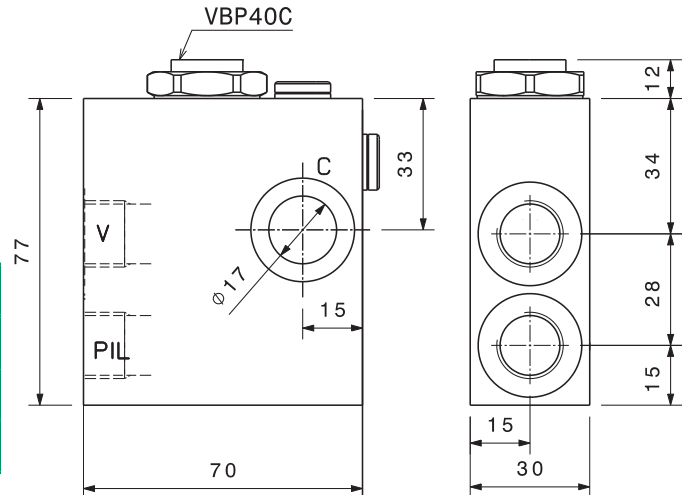


Modello Type	V Pil	C	Rapporto di pilotaggio Pilot ratio	Portata massima Max Flow	Pressione massima Max pressure	Pressione di apertura Cracking pressure
VBS-F-38	3/8" GAS	17	3,4:1	40 l/min 11 gpm	280 bar 4060 psi	3 bar 43.5 psi

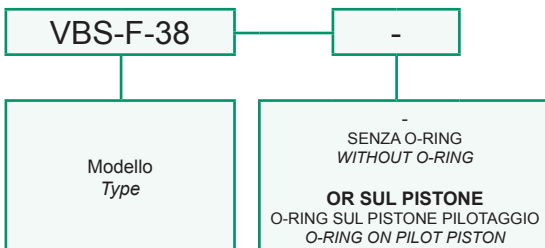
Dati e tarature ottenuti usando olio con viscosità 30 cSt a 50°C
Performances and calibrations are carried out by using hydraulic oil with 30 cSt viscosity at 50°C

Viscosità consigliate <i>Recommended viscosity</i>	10 ÷ 420 cSt
Temperature di lavoro <i>Working temperature</i>	-20 ÷ +90 °C
Filtrazione assoluta <i>Absolute filtration</i>	25 µ

Vite cava disponibile a richiesta Nipple screw available upon request	Modello Type	Codice di ordinazione Ordering code
	VBS-F-38	KITV0001

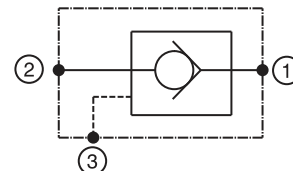
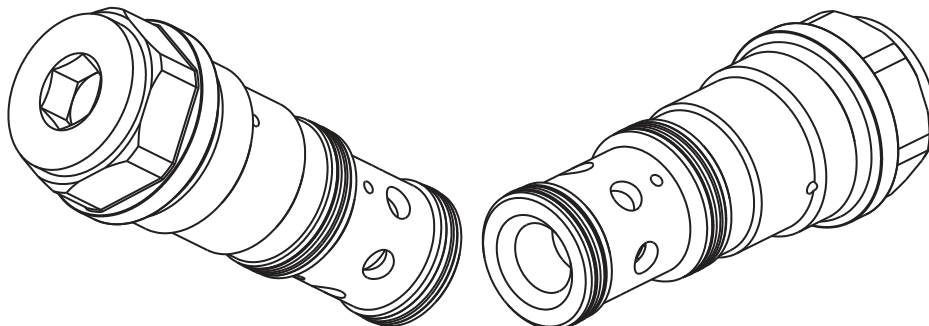


Sigla di ordinazione / Ordering code



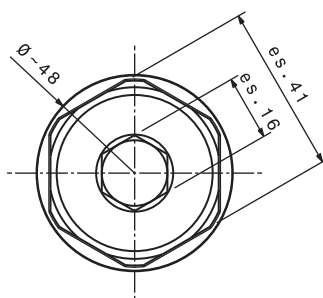
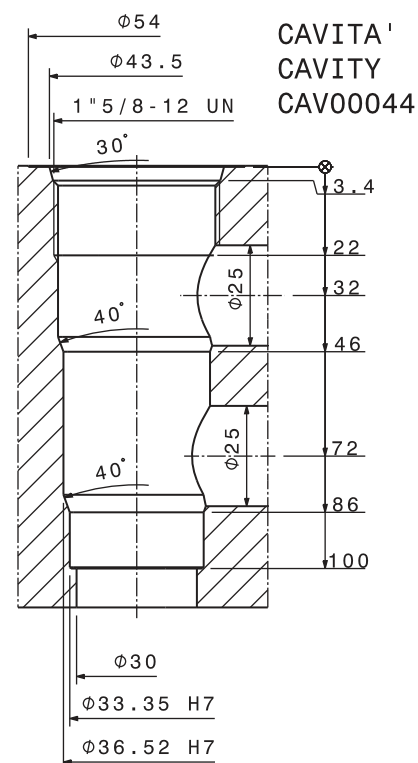
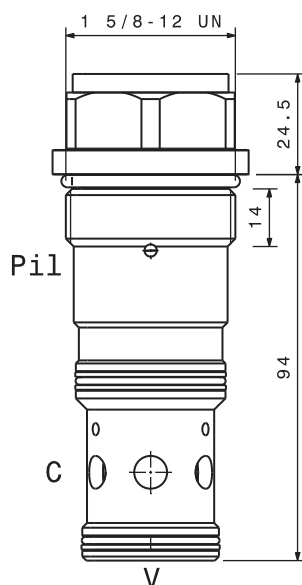
I dati non sono impegnativi, **CBF** si riserva di apportare modifiche senza preavviso.
The specifications are not binding, CBF reserves the right to introduce modifications without notice.

Valvola di blocco pilotata in chiusura a cartuccia
 Check valve, pilot to close – cartridge type
 mod. VBPC-20-C

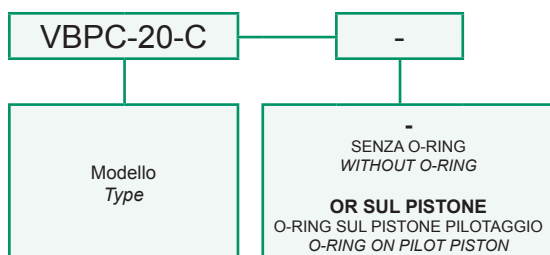


Portata massima Max flow	150 l/min 40 gpm
Pressione massima Max pressure	350 bar 5000 psi
Rapporto di pilotaggio Pilot Ratio	2:1
Pressione di apertura Cracking pressure	2 bar 29 psi
Coppia di serraggio Installation torque	230 ÷ 250 Nm 170 ÷ 190 lbf ft

Dati e tarature ottenuti usando olio con viscosità 30 cSt a 50°C Performances and calibrations are carried out by using hydraulic oil with 30 cSt viscosity at 50°C	
Viscosità consigliate Recommended viscosity	10 ÷ 420 cSt
Temperature di lavoro Working temperature	-20 ÷ +90 °C
Filtrazione assoluta Absolute filtration	25 µ

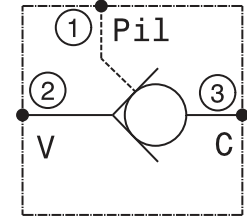
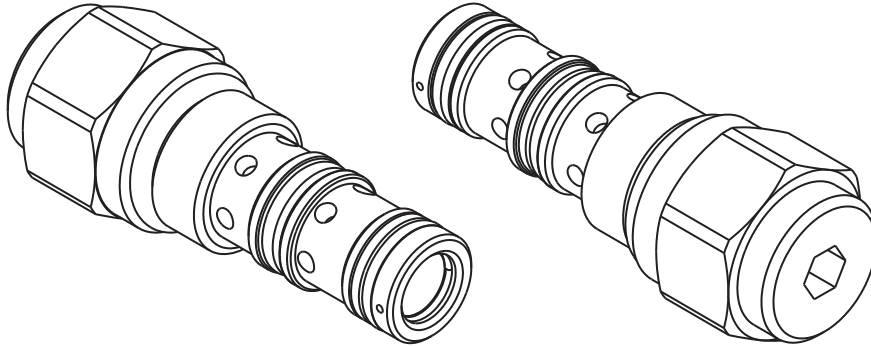


Sigla di ordinazione / Ordering code



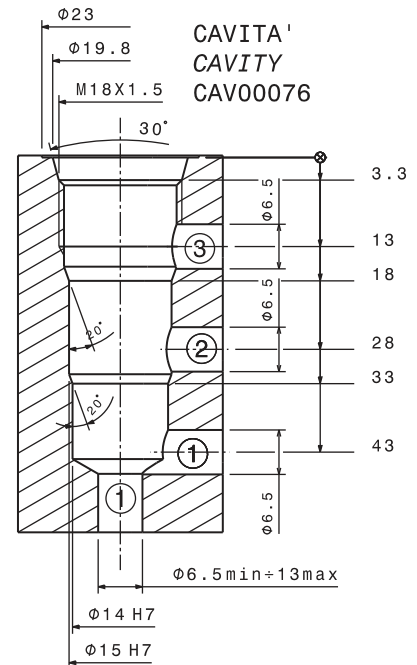
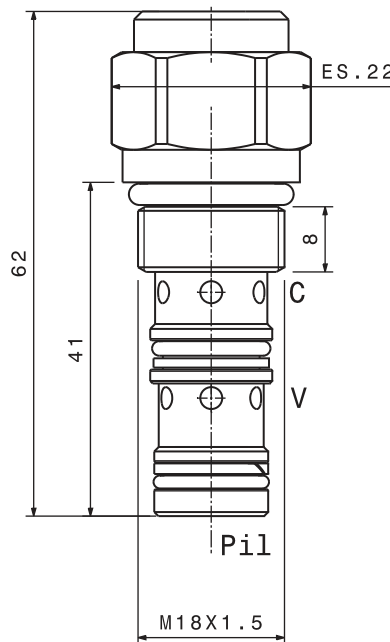
I dati non sono impegnativi, **CBF** si riserva di apportare modifiche senza preavviso.
 The specifications are not binding, **CBF** reserves the right to introduce modifications without notice.

Valvola unidirezionale pilotata a cartuccia
 Pilot operated check valve – cartridge type
 mod. VBP20-C

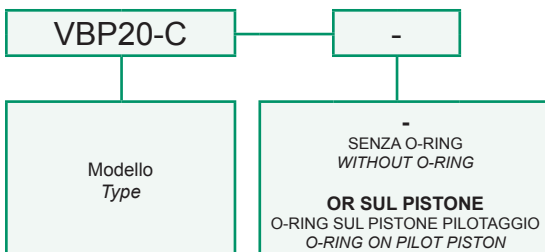


Portata massima <i>Max flow</i>	20 l/min 5.3 gpm
Pressione massima <i>Max pressure</i>	350 bar 5000 psi
Rapporto di pilotaggio <i>Pilot Ratio</i>	3:1
Pressione di apertura <i>Cracking pressure</i>	7 bar 101.5 psi
Coppia di serraggio <i>Installation torque</i>	30 ÷ 35 Nm 22.5 ÷ 26 lbf ft

Dati e tarature ottenuti usando olio con viscosità 30 cSt a 50°C <i>Performances and calibrations are carried out by using hydraulic oil with 30 cSt viscosity at 50°C</i>	
Viscosità consigliate <i>Recommended viscosity</i>	10 ÷ 420 cSt
Temperature di lavoro <i>Working temperature</i>	-20 ÷ +90 °C
Filtrazione assoluta <i>Absolute filtration</i>	25 µ



Sigla di ordinazione / Ordering code

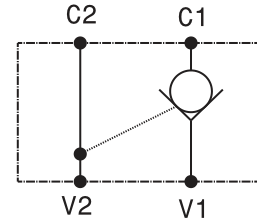
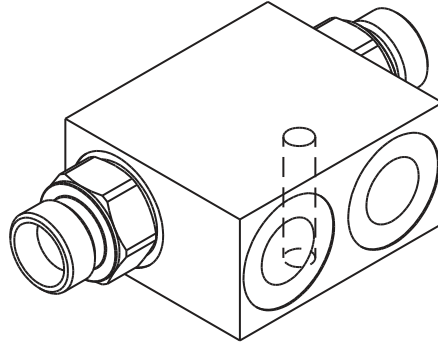


For flow diagram see
 PRESSURE DROP CHECK VALVE (10)

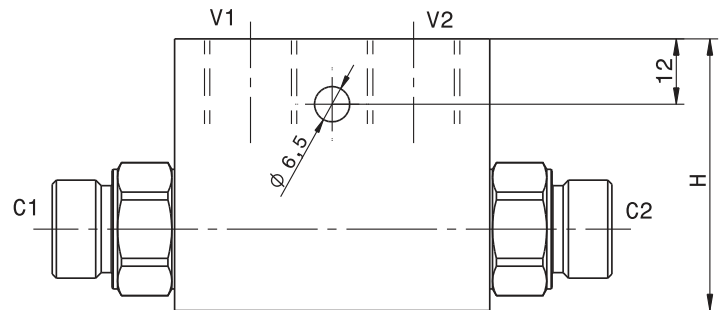
I dati non sono impegnativi, CBF si riserva di apportare modifiche senza preavviso.
 The specifications are not binding, CBF reserves the right to introduce modifications without notice.

Valvola di blocco pilotata a semplice effetto a sfera o a cono
Single effect, pilot operated check valve, ball or poppet type
 mod. **VBS-SF-M** (sfera – ball) / **VBS-SP-M** (cono – poppet)

Versione con corpo in alluminio o in acciaio
Aluminum or steel body version

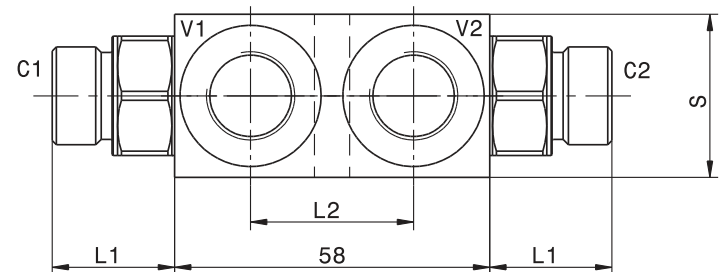


Modello Type	Rapporto di pilotaggio Pilot ratio	Portata massima Max Flow	Pressione massima Max pressure	Pressione di apertura Cracking pressure
VBS-14-SF M16X1.5	4:1	20 l/min 5.3 gpm	350 bar 5000 psi	1.5 bar 22 psi
VBS-38-SF M18X1.5	4:1	35 l/min 9 gpm	350 bar 5000 psi	3 bar 43 psi
VBS-14-SP M16X1.5	4:1	20 l/min 5.3 gpm	350 bar 5000 psi	1.5 bar 22 psi
VBS-38-SP M18X1.5	4:1	35 l/min 9 gpm	350 bar 5000 psi	3 bar 43 psi



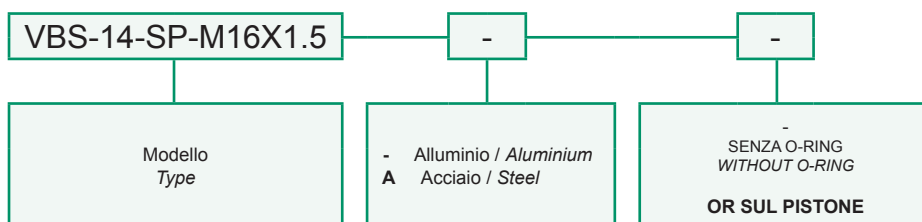
Dati e tarature ottenuti usando olio con viscosità 30 cSt a 50°C
Performances and calibrations are carried out by using hydraulic oil with 30 cSt viscosity at 50°C

Viscosità consigliate Recommended viscosity	10 ÷ 420 cSt
Temperature di lavoro Working temperature	-20 ÷ +90 °C
Filtrazione assoluta Absolute filtration	25 μ



Dimensioni Dimensions	V	C	L1	L2	H	S
VBS-14-SF M16X1.5	1/4" GAS	M16X1.5	23	35	40	25
VBS-38-SF M18X1.5	3/8" GAS	M18X1.5	23	30	50	30
VBS-14-SP M16X1.5	1/2" GAS	M16X1.5	23	35	40	25
VBS-38-SP M18X1.5	1/4" GAS	M18X1.5	23	30	50	30

Sigla di ordinazione / Ordering code



I dati non sono impegnativi, **CBF** si riserva di apportare modifiche senza preavviso.
The specifications are not binding, CBF reserves the right to introduce modifications without notice.

LubeTeam Hydraulic S.r.l.

Administration and Headquarter:

Via Tufara Scautieri, 6

83018 - San Martino Valle Caudina (AV)

Office and Warehouse:

S.S. 7 Appia, Km. 237,00

82011 - Airola BN

ITALY

Tel. +39 0823 950 994

Fax +39 0823 412 546

www.lubeteam.it info@lubeteam.it

Italian VAT / C.F. e P.IVA: 01251720627

Follow us



This document is the property of LubeTeam Hydraulic S.r.l. All data reported here are for the exclusive use of the Receiver. Reproduction is not authorized without writing permission, in all or in part of the content of this document, in accordance to Law 633 art. 171, dated April 22, 1941.

Il presente documento è di proprietà della LubeTeam Hydraulic S.r.l. I dati riportati sono per esclusivo del destinatario. La riproduzione, di tutto o in parte, non è autorizzata senza permesso scritto secondo l'art. 171 della L. 633 del 22 Aprile 1941.