

UFI FILTERS  
FSG



HYDRAULIC  
COMPONENTS  
& FLUID CONTAMINATION  
CONTROL



# FSG

## SUCTION FILTERS

### DESCRIPTION

Tank side wall suction filter

### MATERIALS

Lid: Polyamide

Housing: Aluminum alloy

Seals: NBR Nitrile

### PRESSURE

Collapse, differential for filter element: 1 MPa (10 bar)

### FLOW RATE

Qmax 70 l/min

### WORKING TEMPERATURE

From -25° to +110° C

### COMPATIBILITY (ISO 2943)

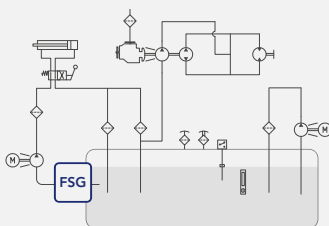
Full with fluids: HH-HL-HM-HV-HTG

(according to ISO 6743/4)

For fluids different than the above mentioned,  
please contact our Customer Service



### HYDRAULIC DIAGRAM



Is this datasheet the latest release? Please check on our website

# FSG

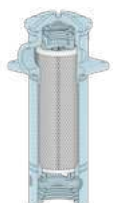
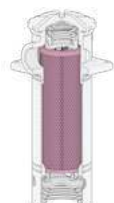

## SUCTION FILTERS

### ORDERING AND OPTION CHART

F	S	G	COMPLETE FILTER FAMILY			FILTER ELEMENT FAMILY	E	S	G
			SIZE & LENGTH	11	13	SIZE & LENGTH			
			PORT TYPE						
			B = BSP thread	B	B				
			PORT SIZE*						
			10 = 1" 1/4	10	10				
	W		BYPASS VALVE						
			W = without bypass	W	W				
			SEALS			SEALS			
			N = NBR Nitrile	N	N				
			FormulaUFI MEDIA			FormulaUFI MEDIA			
			CC = FormulaUFI.CELL 10 µm	CC	CC				
			CLOGGING INDICATOR						
			01 = 1/8" port, plugged	01	01				
			10 = vacuum gauge, rear connection	10	10				
			91 = SPDT, vacuum switch	91	91				
			ACCESSORI / ACCESSORIES						
			W = without	W	W				
			ACCESSORI / ACCESSORIES						
			X = without	X	X				

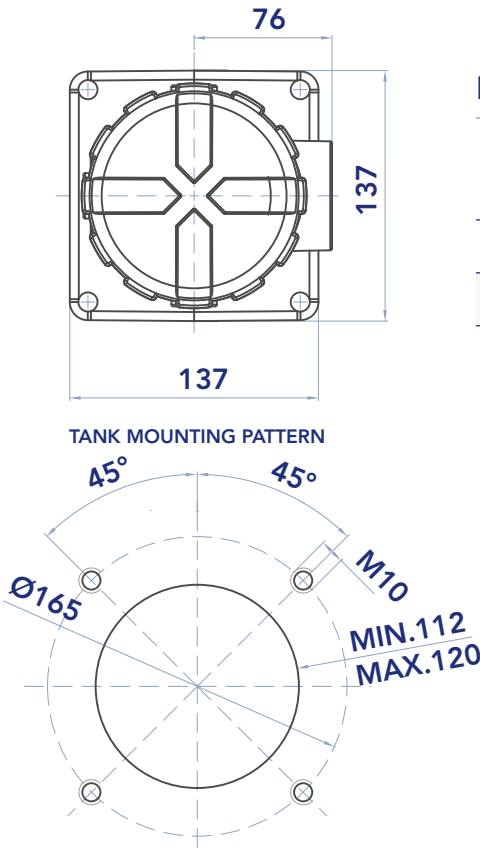
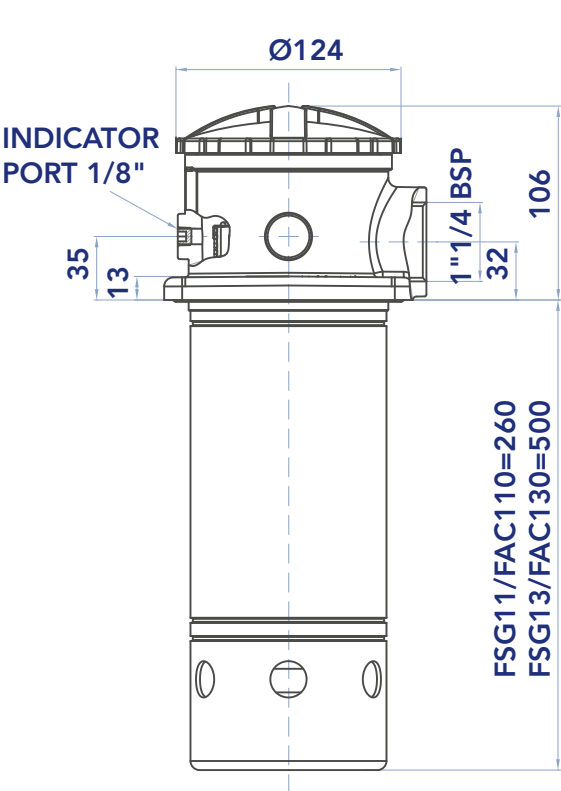
\* Port size B08 (1") on request, please check availability with our Customer Service

### SPARE PARTS

FILTER HOUSING										FILTER ELEMENT										CLOGGING INDICATOR										
																														
B	S	G		B	1	0				E	S	G																		



# INSTALLATION DRAWING

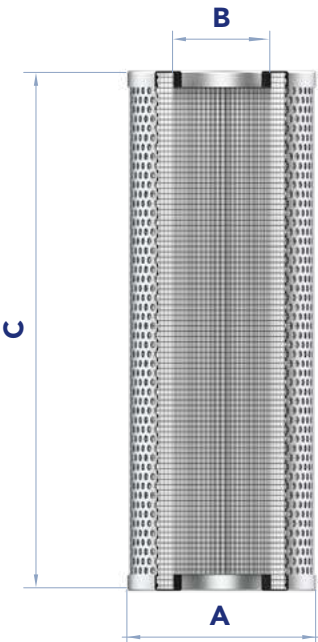


# FILTER WEIGHT

	Kg
FSG11	2,8
FSG13	3,2

# FILTER ELEMENT

	A	B	C	Kg	AREA (cm <sup>2</sup> ) Media C
ESG11	83	50	230	0,4	5.000
ESG13	83	50	472	0,5	9.300



# FSG

## SUCTION FILTERS

### MAINTENANCE

- 1) Stop the system and verify there is no pressure in the filter.
- 2) Loose the cover (1).
- 3) Remove the dirty filter element (2).  
N.B. The used filter elements and oil dirty filter parts dirty are classified "Dangerous waste material" and must be disposed of according to the local laws, by authorized Companies.
- 4) Check the filter element part number on the filter label or in the ordering and option chart.  
Use only original spare parts.
- 5) Lubricate the new element O-ring gasket (3) with oil.
- 6) Insert the clean element into into the filter housing, resting on the lower gasket (3).
- 8) Check the cover O-ring condition (4) and lubricate with oil.  
If damaged, check the seal kit part number in the spare seal kit table.
- 9) Screw the cover (1) up to the stop to ensure the correct locking of the filter element.

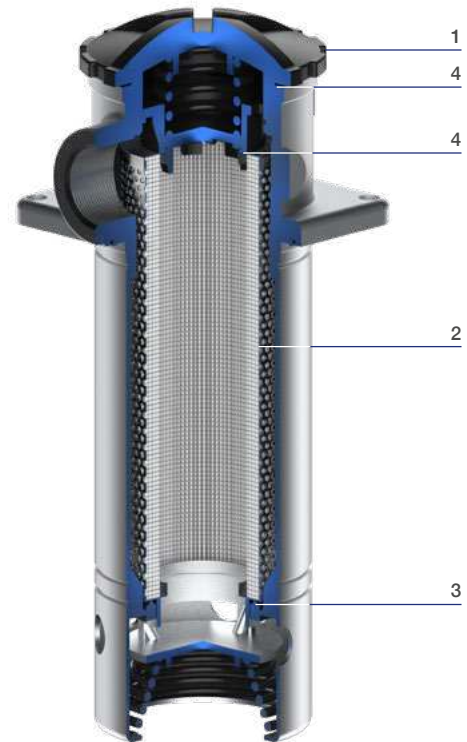
Accessories:

Clogging indicator

If damaged, unscrew and replace it (check the part number in the ordering and option chart).

Apply a thread-sealing and screw until tight.

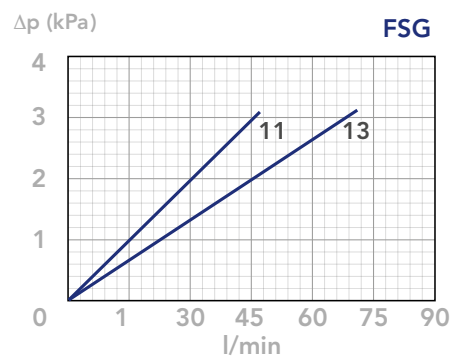
N.B. an overtightening can damage the thread.



### PRESSURE DROP CURVES ( $\Delta P$ )

The Pressure Drop ( $\Delta p$ ) must be lower than 3 kPa (0,03 bar).

COMPLETE FILTER PRESSURE DROP  
(mainly depending on the port size)



### N.B.

All the curves have been obtained with mineral oil having a kinematic viscosity 30 cSt and specific gravity 0,86 kg/dm<sup>3</sup>; for fluids with different features, please consider the factors described in the first part of this catalogue. All the curves are

obtained from test done at the UFI FILTERS HYDRAULICS DIVISION Laboratory, according to the specification ISO 3968. In case of discrepancy, please check the contamination level, viscosity and features of the fluid in use.

## LubeTeam Hydraulic S.r.l.

*Administration and Headquarter:*

Via Tufara Scautieri, 6

83018 - San Martino Valle Caudina (AV)

*Office and Warehouse:*

S.S. 7 Appia, Km. 237,00

82011 - Airola BN

ITALY

Tel. +39 0823 950 994

Fax +39 0823 412 546

[www.lubeteam.it](http://www.lubeteam.it) [info@lubeteam.it](mailto:info@lubeteam.it)

Italian VAT / C.F. e P.IVA: 01251720627

Follow us



This document is the property of LubeTeam Hydraulic S.r.l. All data reported here are for the exclusive use of the Receiver. Reproduction is not authorized without writing permission, in all or in part of the content of this document, in accordance to Law 633 art. 171, dated April 22, 1941.

Il presente documento è di proprietà della LubeTeam Hydraulic S.r.l. I dati riportati sono per esclusivo del destinatario. La riproduzione, di tutto o in parte, non è autorizzata senza permesso scritto secondo l'art. 171 della L. 633 del 22 Aprile 1941.