

STAUFF
Filters
Offline and Bypass filters
BPS



 HYDRAULIC
COMPONENTS
& FLUID CONTAMINATION
CONTROL



All trademarks belong to their respective owners; third party trademarks, product names, trade names, corporate names and company names mentioned may be trademarks of their respective owners or registered trademarks of other companies and are used for instructional purposes and for the benefit of the owner, without any end of Copyright infringement in force.

Tutti i marchi riportati appartengono ai legittimi proprietari; marchi di terzi, nomi di prodotti, nomi commerciali, nomi corporativi e società citati possono essere di proprietà dei rispettivi titolari o registrati da altre società e sono stati utilizzati a puro scopo esplicativo e a beneficio del possessore, senza alcun fine di violazione dei diritti di Copyright vigenti.

Bypass Filters ■ Type BPS

Description

STAUFF BPS Bypass Filter can be used for OEM first fit applications as well as for retro-fitting. The filtration is done in a bypass configuration from the main hydraulic system.

The STAUFF BPS Filter Systems are available with one filter housing (BPS-1A, maximum flow 2,1 l/min / .6 US GPM) or with two filter housings (BPS-2A, maximum flow 4,2 l/min / 1.1 US GPM) at a viscosity between 20 ... 160 cSt. The STAUFF Bypass Filter Units are especially designed for mobile applications in hydraulic and/or transmission systems.

In the absence of a pumped system, the oil is drawn from the main system by means of a specially designed and integrated flow valve. The amount of oil extracted at any time is insignificant therefore ensuring that it will not affect the working of the main system. Most commonly used biodegradable oils in the mobile sector are suitable for filtration with STAUFF Filter Elements.

STAUFF Systems have been applied on a wide range of mobile hydraulic machinery, cleaning fluids to levels not previously possible with conventional filtration methods, resulting in dramatic increases in component life.

Material

- Housing: Anodized Aluminium

Differential Pressure

- Max. 6,2 bar / 90 PSI

Temperature Range

- Max. +80 °C / +176 °F media temperature

Media Compatibility

- Mineral and lubrication oils, others on request

Options and Accessories (only for BPS)

Clogging Indicators

- Visual clogging indicators

Valves

- Available with flow control valve



Type BPS

- Bypass filter units are especially designed for mobile applications in hydraulic and/or transmission systems
- No special motor-pump unit is required
- Housing pressure: max. 20 bar / 290 PSI
- Nominal flow rate: max. 4,2 l/min / 1.1 US GPM
- System volume: max. 1350 l / 356 gal
- Connections: G1/4, G1/2
- Pressure range: 12 ... 420 bar / 180 ... 6200 PSI



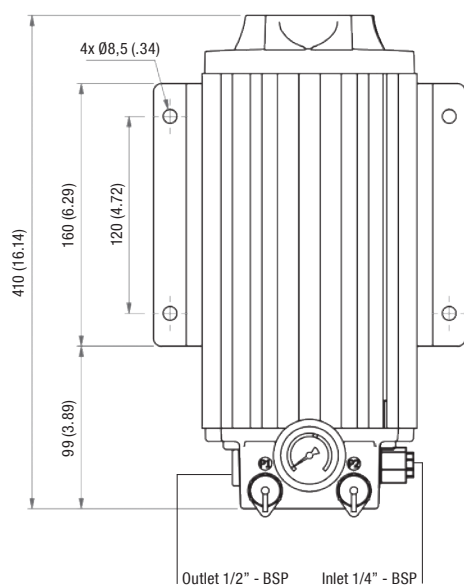
Type BPS

- Bypass filter units are especially designed for mobile applications in hydraulic and/or transmission systems
- No special motor-pump unit is required
- Housing pressure: max. 20 bar / 290 PSI
- Nominal flow rate: max. 4,2 l/min / 1.1 US GPM
- System volume: max. 2700 l / 713 gal
- Connections: G1/4, G1/2
- Pressure range: 12 ... 420 bar / 180 ... 6200 PSI

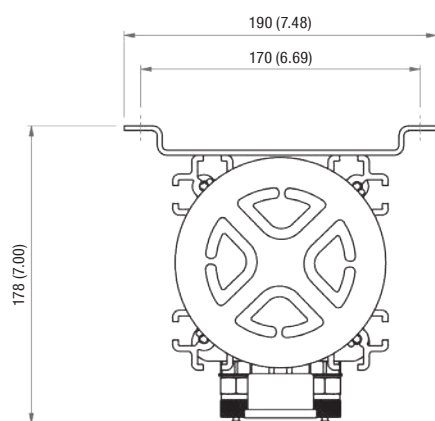


Bypass Filters ▪ Type BPS

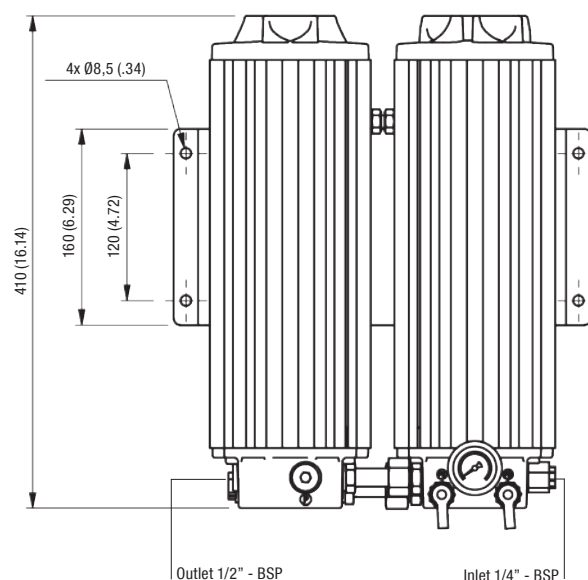
Dimensions BPS-1-30-H-B



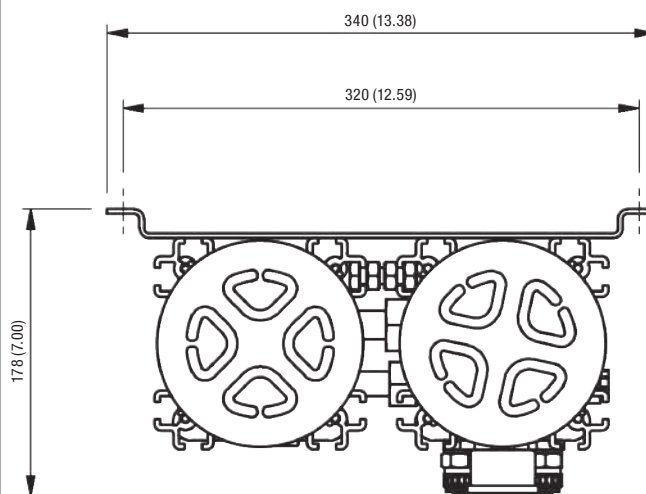
Top View



Dimensions BPS-2-30-H-B



Top View



All dimensions in mm / in



Bypass Filters ■ Type BPS

Technical Data BPS

	BPS-1-30-H-B	BPS-2-30-H-B
Number of Filter Housings	1	2
Nominal Flow Rate	2,1 l/min .6 US GPM	4,2 l/min 1.1 US GPM
Max. Differential Pressure	6,2 bar over the filter element without back pressure 90 PSI over the filter element without back pressure	
Max. Fluid Temperature	+80 °C +176 °F	
Max. Housing Pressure	20 bar 290 PSI	
Viscosity Range	20 ... 160 cSt 100 ... 750 SUS	
Connection Pressure Side	G1/4	
Connection Return Side	G1/2	
Hose Diameter	3/8 ... 1/2 in (inner diameter) flexible hose	
Weight (including Element)	6 kg 13.2 lbs	13 kg 28.7 lbs
Max. System Volume	750 l 200 gal	1500 l 400 gal
Dimensions H x W x D	410 x 190 x 178 mm 16.14 x 7.48 x 7.00 in	410 x 340 x 178 mm 16.14 x 13.38 x 7.00 in
Connection for On-Line Particle Counter	STAUFF Test (M16 x 2)	
Pressure Range	12 ... 420 bar 180 ... 6200 PSI	
Connection Oil-Analysis: P1 filter inlet side P2 filter outlet side	Test connector (M16 x 2) Red Test connector (M16 x 2) Yellow	

Bypass Filter Housings / Complete Filters ■ Type BPS

BPS	-	1	-	30	-	H	-	B	-	V	-	O	-	O
①		②		③		④		⑤		⑥		⑦		⑧
① Type		Bypass Filter Unit (for mobile applications)		BPS										
② Housing Configuration		Single housing Twin housing		1 2										
③ Filter Element Length		300 mm / 11.81 in		30										
④ Filter Material and Micron Rating						Material	Micron Rating µm	Code						
						Cellulose (standard)	0,5	H						
						Inorg. glass fibre	1	E-01						
						Inorg. glass fibre	3	E-03						
						Inorg. glass fibre	5	E-05						
						Inorg. glass fibre	10	E-10						
						Inorg. glass fibre	20	E-20						
						Inorg. glass fibre and polymer (water absorption)	5	EA						
⑤ Sealing Material						NBR (Buna-N®) (standard)		B						
						FKM (Viton®)		V						
⑥ Clogging Indicator						Visual clogging indicator		V						
⑦ Valve Options						With flow control valve (standard)		O						
						Without flow control valve		1						
⑧ Mounting Options						No bracket (standard)		O						
						With standard foot / bulk head mounting bracket		1						
						With "bulk head mounting only" bracket		2						
						With standard 'OLS' wall mounting bracket		3						

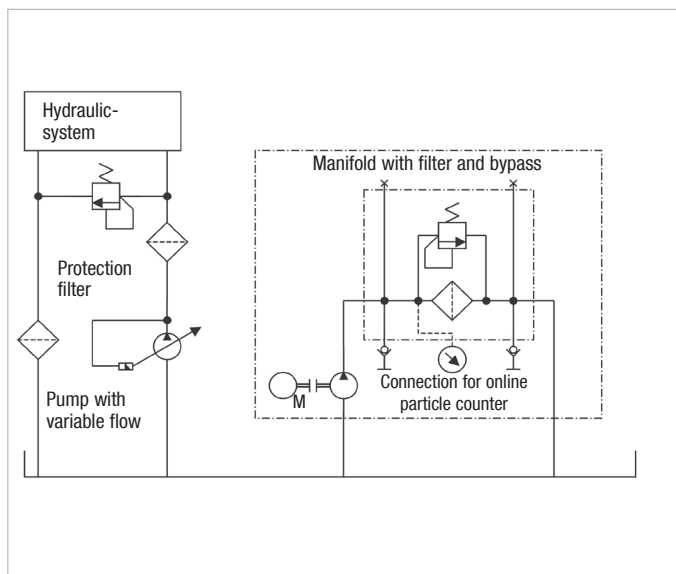
Filter Elements ■ Type SRM

SRM	-	30	-	H	-	B	/	X
①		②		③		④		⑤
① Type		Filter Element Series		SRM				
② Filter Element Length		300 mm / 11.81 in		30				
③ Filter Material and Micron Rating						Material	Micron Rating µm	Code
						Cellulose (standard)	0,5	H
						Inorg. glass fibre	1	E-01
						Inorg. glass fibre	3	E-03
						Inorg. glass fibre	5	E-05
						Inorg. glass fibre	10	E-10
						Inorg. glass fibre	20	E-20
						Inorg. glass fibre and polymer (water absorption)	5	EA
④ Sealing Material						NBR (Buna-N®) (standard)		B
						FKM (Viton®)		V
⑤ Design Code						Only for information		X

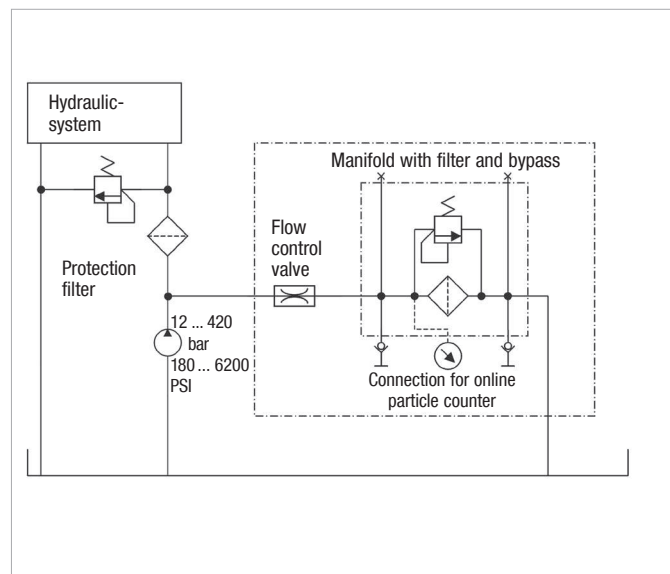


Bypass and Offline Filters ■ Type OLS / BPS

Offline Filter OLS Hydraulic Symbol

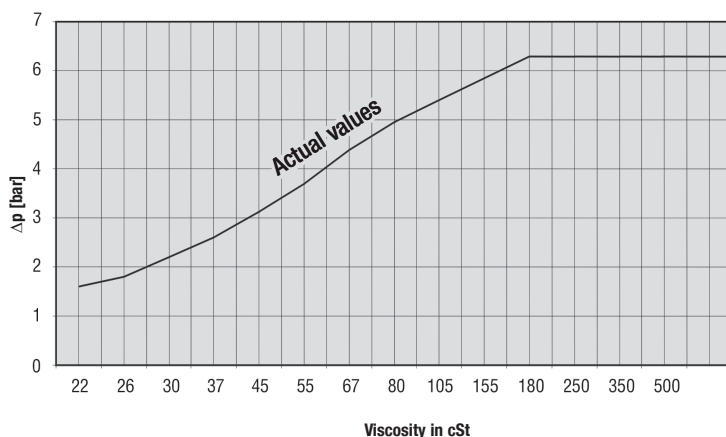


Bypass Filter BPS Hydraulic Symbol

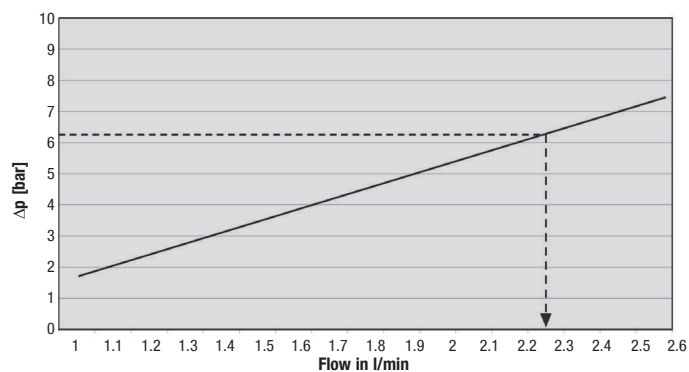


Filter Element SRM-30-HB Δp / viscosity - graph

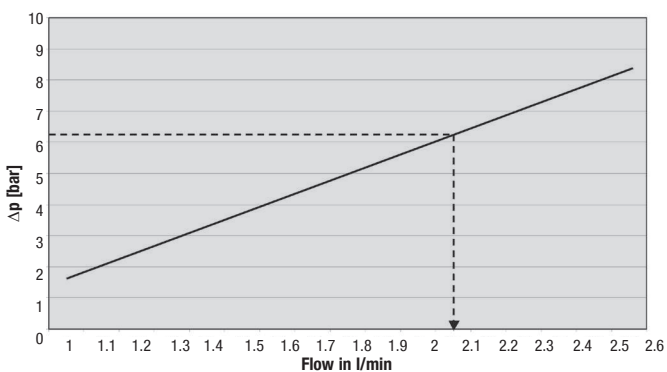
(at a flow of 2,1 l/min / .6 US GPM per element)



Flow Characteristics Offline Filter OLS with Filter Element SRM-30-H-B (at maximum viscosity)



Flow Characteristics Bypass Filter BPS with Filter Element SRM-30-H-B (at maximum viscosity)



LubeTeam Hydraulic S.r.l.

Administration and Headquarter:

Via Tufara Scautieri, 6

83018 - San Martino Valle Caudina (AV)

Office and Warehouse:

S.S. 7 Appia, Km. 237,00

82011 - Airola BN

ITALY

Tel. +39 0823 950 994

Fax +39 0823 412 546

www.lubeteam.it info@lubeteam.it

Italian VAT / C.F. e P.IVA: 01251720627

Follow us



This document is the property of LubeTeam Hydraulic S.r.l. All data reported here are for the exclusive use of the Receiver. Reproduction is not authorized without writing permission, in all or in part of the content of this document, in accordance to Law 633 art. 171, dated April 22, 1941.

Il presente documento è di proprietà della LubeTeam Hydraulic S.r.l. I dati riportati sono per esclusivo del destinatario. La riproduzione, di tutto o in parte, non è autorizzata senza permesso scritto secondo l'art. 171 della L. 633 del 22 Aprile 1941.