



MP Filter  
FMMXEX ATEX  
Series



 HYDRAULIC  
COMPONENTS  
& FLUID CONTAMINATION  
CONTROL



### THE X CONCEPT FOR OUR FILTERS

Protect the performance of your system with MYclean.

Quality and efficiency are fundamental for MP Filtri: this exclusive new filter element possesses polygon shape geometry and specific seal that ensures only original spare parts can be used - ensuring correct operation and higher system reliability.

+



### THE Z CONCEPT FOR OUR FILTERS


Zerospark® is a specialist solution designed to solve the problem of electrostatic discharge inside hydraulic filters. Caused by the electrical charge build-up due to the passage of oil through the filters, this can result in damage to filter elements, oils and circuit components. It can even cause fire hazards in environments where flammable materials are present.



FMMX ATEX series 

with  + 

HPX Filter Element

-  **Protects the machine from improper use of non-original products.**
-  **Safety of constant quality protection & reliability**

With exclusive filter element you are sure that only MP Filtri filter elements can be used, ensuring the best cleaning level of the oil due to the use of originals filter elements.

The products identified as FMMX series are protected by:

-  Italian Patent n° 102014902261205
-  Canadian Patent n° 2,937,258
-  European Patent n° 3 124 092 B1
-  US Patent n° 20170030384 A1

# FMMX series

Maximum working pressure up to 42 MPa (420 bar) - Flow rate up to 300 l/min



## INSTALLATION, SERVICE AND MAINTENANCE MANUAL AND SAFETY INSTRUCTIONS



Please scan or click the QR codes to get updated electronic version of the related document.



*Scan or click me!*

## Description

### Filters for potentially explosive atmosphere

#### In-line

**Maximum working pressure up to 42 MPa (420 bar)**

**Flow rate up to 300 l/min**

FMMX is a range of versatile high pressure filter for protection of sensitive components in high pressure hydraulic systems in the mobile machines. They are directly connected to the lines of the system through the hydraulic fittings.

#### Available features:




- Female threaded connections up to 1 1/4", for a maximum flow rate of 300 l/min
- Fine filtration rating, to get a good cleanliness level into the system
- Bypass valve, to relieve excessive pressure drop across the filter media
- Low collapse filter element with external support "N", for filter element protection against the back pressure caused by the check valve in filters provided with the bypass valve
- Visual, electrical and electronic differential clogging indicators
- MYclean interface connection for the filter element, to protect the product against non-original spare parts

#### Common applications:

- Agricultural machines
- Mobile machines




#### Filter with:

NBR seal in configuration **zerospark+**

   II 3G Ex h IIC T6 Gc X  
II 3D Ex h IIIC T85°C Dc X

FPM seal in configuration

**zerospark+**

   II 3G Ex h IIC T6... T4 Gc X  
II 3D Ex h IIIC T85°C...T115°C Dc X

## Technical data

#### Filter housing materials

- Head: Painted cast iron, black RAL 9005
- Housing: Phosphatized steel
- Bypass valve: Steel

#### Pressure

- Test pressure: 63 MPa (630 bar)
- Min. Burst pressure: 126 MPa (1260 bar)
- Pulse pressure fatigue test: 1 000 000 cycles with pressure from 0 to 42 MPa (420 bar)

#### Bypass valve

- Opening pressure 0.6 MPa (6 bar) ±10%
- Other opening pressures on request.

#### Filter element features

Filter FMMX		Filter element HPX	
Δp Element type			
Element media	Construction	Δp Series	Δp
A - Microfiber	Standard	N	20 bar
A - Microfiber	High Δp with external support	S	210 bar
M - Wire mesh	Standard	N	20 bar

*Please see ordering code tables to check element Δp series availability based on filter features.*

**Flow direction through the filter element:**  
From OUT to IN

#### Temperature

Seals	Ambient Temperature	Max fluid Temperature	Temperature Class	Max surface temperature
NBR	-15 °C ÷ +80 °C	+80 °C	T6	T85 °C
FPM	-15 °C ÷ +80 °C	+80 °C	T6	T85 °C
	-15 °C ÷ +95 °C	+95 °C	T5	T100 °C
	-15 °C ÷ +110 °C	+110 °C	T4	T115 °C

#### Seals

- Standard NBR series A
- Optional FPM series V

#### Note

FMMX filters are provided for vertical mounting

#### Connections

In-line Inlet/Outlet

## Weights [kg] and volumes [dm<sup>3</sup>]

Filter series	Weights [kg]					Volumes [dm <sup>3</sup> ]						
	Length	1	2	3	4	5	Length	1	2	3	4	5
<b>FMMX 050</b>		3.11	3.48	3.90	4.36	5.54		0.34	0.48	0.63	0.81	1.23
<b>FMMX 150</b>		7.50	9.50	10.90	-	-		0.60	1.00	1.25	-	-

Flow rates [l/min]

Filter series	Length	Filter element design - N Series						Filter element design - S Series				
		A03	A06	A10	A16	A25	M25	A03	A06	A10	A16	A25
<b>FMMX 050</b>	<b>1</b>	42	43	79	82	106	147	29	39	57	59	74
	<b>2</b>	52	57	85	96	121	149	45	49	76	88	114
	<b>3</b>	66	69	97	106	130	150	58	61	89	99	125
	<b>4</b>	83	89	113	115	134	152	74	80	106	108	129
	<b>5</b>	107	110	130	134	141	154	93	95	111	121	139
<b>FMMX 150</b>	<b>1</b>	81	88	156	163	179	295	58	67	128	128	158
	<b>2</b>	142	145	227	230	236	312	119	137	212	212	207
	<b>3</b>	170	180	242	245	263	315	138	164	211	224	239

**Maximum flow rate for a complete pressure filter with a pressure drop  $\Delta p = 1.5$  bar.**

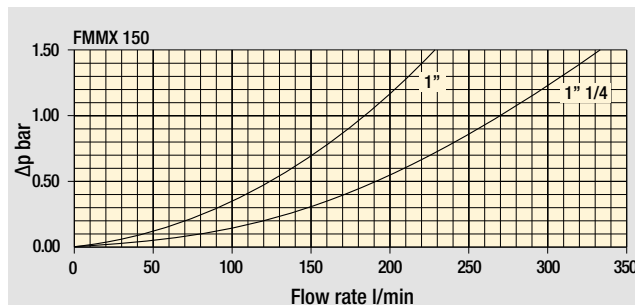
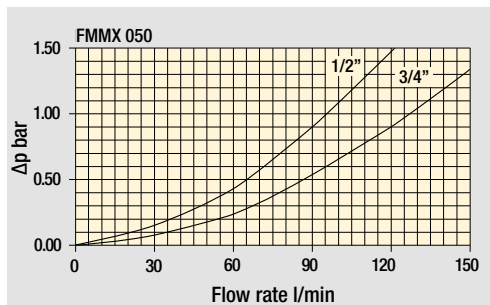
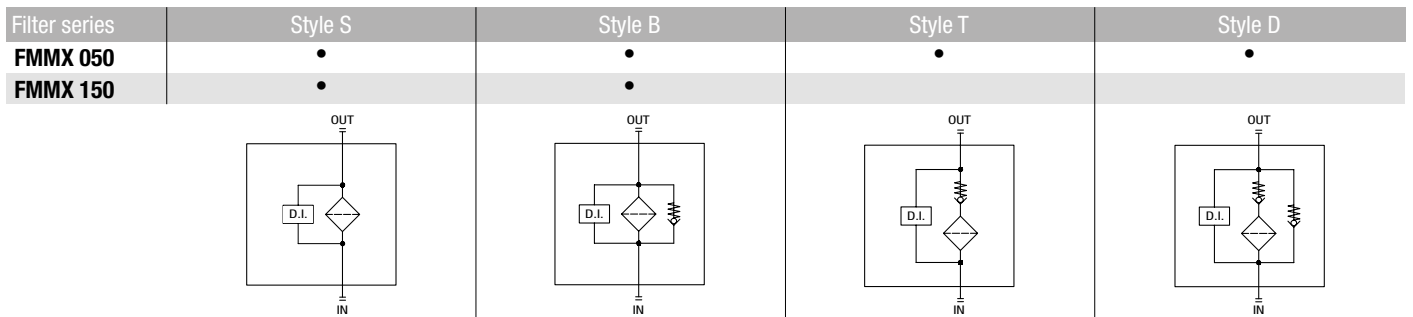
The reference fluid has a kinematic viscosity of 30 mm<sup>2</sup>/s (cSt) and a density of 0.86 kg/dm<sup>3</sup>.

For different pressure drop or fluid viscosity we recommend to use our selection software available on [www.mpfiltri.com](http://www.mpfiltri.com).

You can also calculate the right size using the formulas present on the FILTER SIZING paragraph at the beginning of the full catalogue or at the beginning of the filter family brochure.

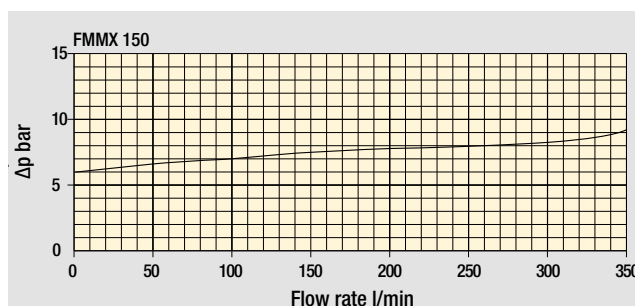
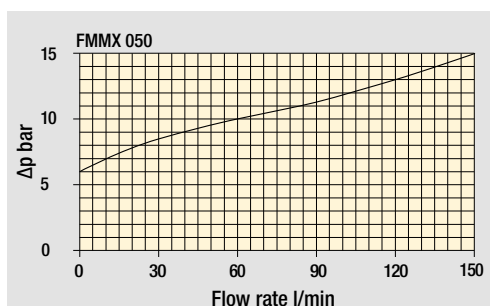
Please, contact our Sales Department for further additional information.

**Hydraulic symbols**

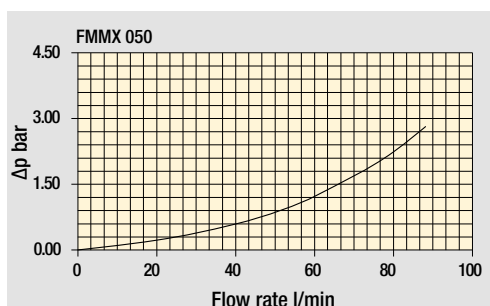


**Pressure drop**

Filter housings  
 $\Delta p$  pressure drop



Bypass valve  
pressure drop



Filter housing  
with check valve

The curves are plotted using mineral oil with density of 0.86 kg/dm<sup>3</sup> in compliance with ISO 3968.  $\Delta p$  varies proportionally with density.

# FMMX FMMX050

## Designation & Ordering code

### COMPLETE FILTER

Series and size Configuration example: **FMMX050** | **3** | **B** | **A** | **G** | **A10** | **N** | **Z01** | **EX**

**FMMX050** Filter featuring **MYCLEAN** Filter Element

Length  
**1** | **2** | **3** | **4** | **5**

Valves (see page 665)  
**S** Without bypass  
**B** With bypass 6 bar  
**T** With check valve, without bypass  
**D** With check valve, with bypass 6 bar

Seals  
**A** NBR **V** FPM

Connections  
**A** M18x1.5 - ISO 6149 **E** 1/2" NPT  
**B** M22x1.5 - ISO 6149 **F** 3/4" NPT  
**C** G 1/2" **G** SAE 8 - 3/4" - 16 UNF  
**D** G 3/4" **H** SAE 12 - 1 1/16" - 12 UN

Filtration rating (filter media)  
**A03** Inorganic microfiber 3 µm  
**A06** Inorganic microfiber 6 µm  
**A10** Inorganic microfiber 10 µm  
**A16** Inorganic microfiber 16 µm  
**A25** Inorganic microfiber 25 µm

Element Δp	Valves			
	S	B	T	D
<b>N</b> 20 bar	-	•	-	•
<b>S</b> 210 bar	•	•	•	•

Executions  
**zerospark**  
**Z01** Upper connection for clogging indicator  
**Z02** Without connection for clogging indicator  
**Z03** Frontal connection for clogging indicator  
**Zxx** Customized

Certifications  
**EX** ATEX certifications

### FILTER ELEMENT

Element series and size Configuration example: **HPX050** | **3** | **A10** | **A** | **N** | **Z01**

**HPX050** Filter Element with **MYCLEAN** feature

Element length  
**1** | **2** | **3** | **4** | **5**

Filtration rating (filter media)  
**A03** Inorganic microfiber 3 µm  
**A06** Inorganic microfiber 6 µm  
**A10** Inorganic microfiber 10 µm  
**A16** Inorganic microfiber 16 µm  
**A25** Inorganic microfiber 25 µm

Seals  
**A** NBR  
**V** FPM

Element Δp  
**N** 20 bar  
**S** 210 bar

Execution  
**zerospark**  
**Z01** MP Filtri standard  
**Zxx** Customized

### CLOGGING INDICATORS

See page 723

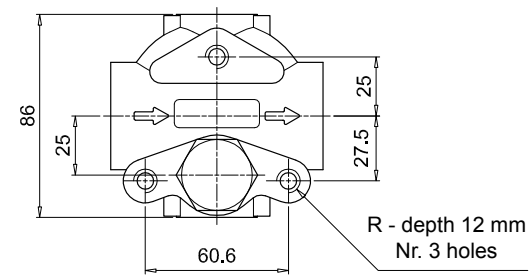
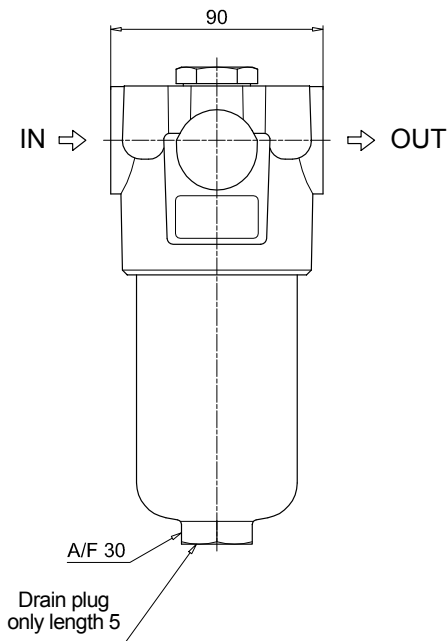
**DEH** Electrical differential pressure indicator 420 bar  
**DVA** Visual differential pressure indicator

**DVM** Visual differential pressure indicator

### PLUGS

See page 741

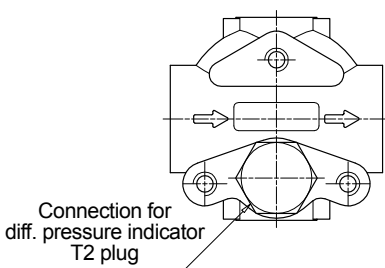
**T2** Plug



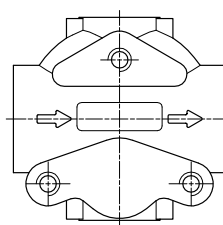
FMMX050	
Filter length	H [mm]
1	158
2	195
3	237
4	285
5	407
Connections	R
A-B-C-D	M10
E-F-G-H	3/8" UNC

Recommended clearance space for maintenance

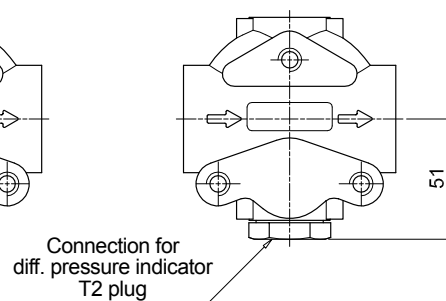
Execution P01



Execution P02



Execution P03



# FMMX FMMX150

## Designation & Ordering code

### COMPLETE FILTER

Series and size **FMMX150** Filter featuring **MYCLEAN** Filter Element Config. example: **FMMX150** **2** **B** **A** **D** **2** **M25** **N** **Z01** **EX**

**FMMX150** Filter featuring **MYCLEAN** Filter Element

#### Length

**1** | **2** | **3** |

#### Valves (see page 665)

**S** Without bypass      **B** With bypass 6 bar

#### Seals

**A** NBR      **V** FPM

#### Connections

**C** G1"      **F** 1 1/4" NPT  
**D** G1 1/4"      **G** SAE 16 - 1 5/16" - 12 UN  
**E** 1" NPT      **H** SAE 20 - 1 5/8" - 12 UN

#### Connections for differential indicator

**1** Without connection  
**2** Upper connection  
**3** Frontal connection

#### Filtration rating (filter media)

<b>A03</b> Inorganic microfiber	3 µm
<b>A06</b> Inorganic microfiber	6 µm
<b>A10</b> Inorganic microfiber	10 µm
<b>A16</b> Inorganic microfiber	16 µm
<b>A25</b> Inorganic microfiber	25 µm
<b>M25</b> Wire mesh	25 µm

Element Δp	Valves	
	S	B
<b>N</b> 20 bar	-	•
<b>S</b> 210 bar	•	•

#### Execution

**zerospark**  
**Z01** MP Filtri standard  
**Zxx** Customized

#### Certifications

**EX** ATEX certifications

### FILTER ELEMENT

#### Element series and size

**HPX150** Filter Element with **MYCLEAN** feature

Configuration example: **HPX150** **3** **A10** **A** **N** **Z01**

#### Element length

**1** | **2** | **3** |

#### Filtration rating (filter media)

<b>A03</b> Inorganic microfiber	3 µm
<b>A06</b> Inorganic microfiber	6 µm
<b>A10</b> Inorganic microfiber	10 µm
<b>A16</b> Inorganic microfiber	16 µm
<b>A25</b> Inorganic microfiber	25 µm
<b>M25</b> Wire mesh	25 µm

#### Seals

**A** NBR  
**V** FPM

#### Element Δp

**N** 20 bar  
**S** 210 bar

#### Execution

**zerospark**  
**Z01** MP Filtri standard  
**Zxx** Customized

### CLOGGING INDICATORS

See page 723

**DEH** Electrical differential pressure indicator 420 bar

**DVM** Visual differential pressure indicator

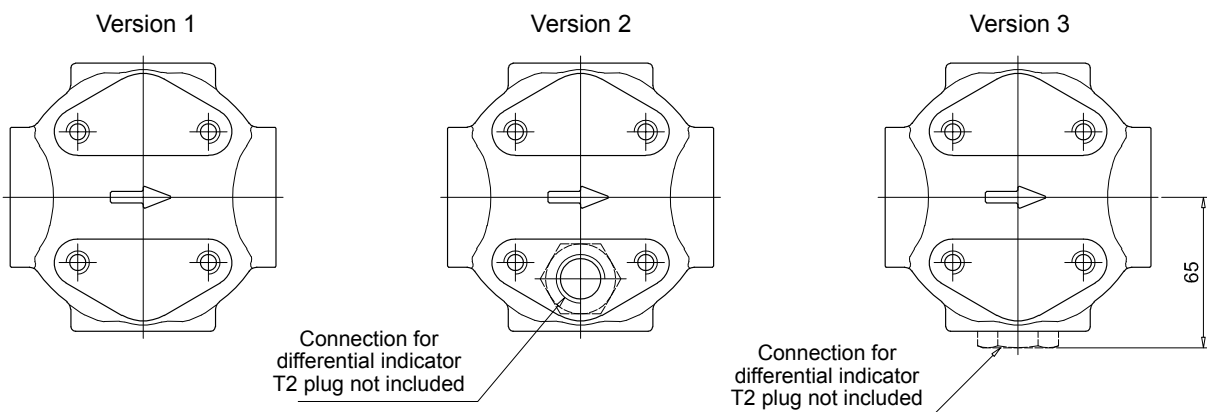
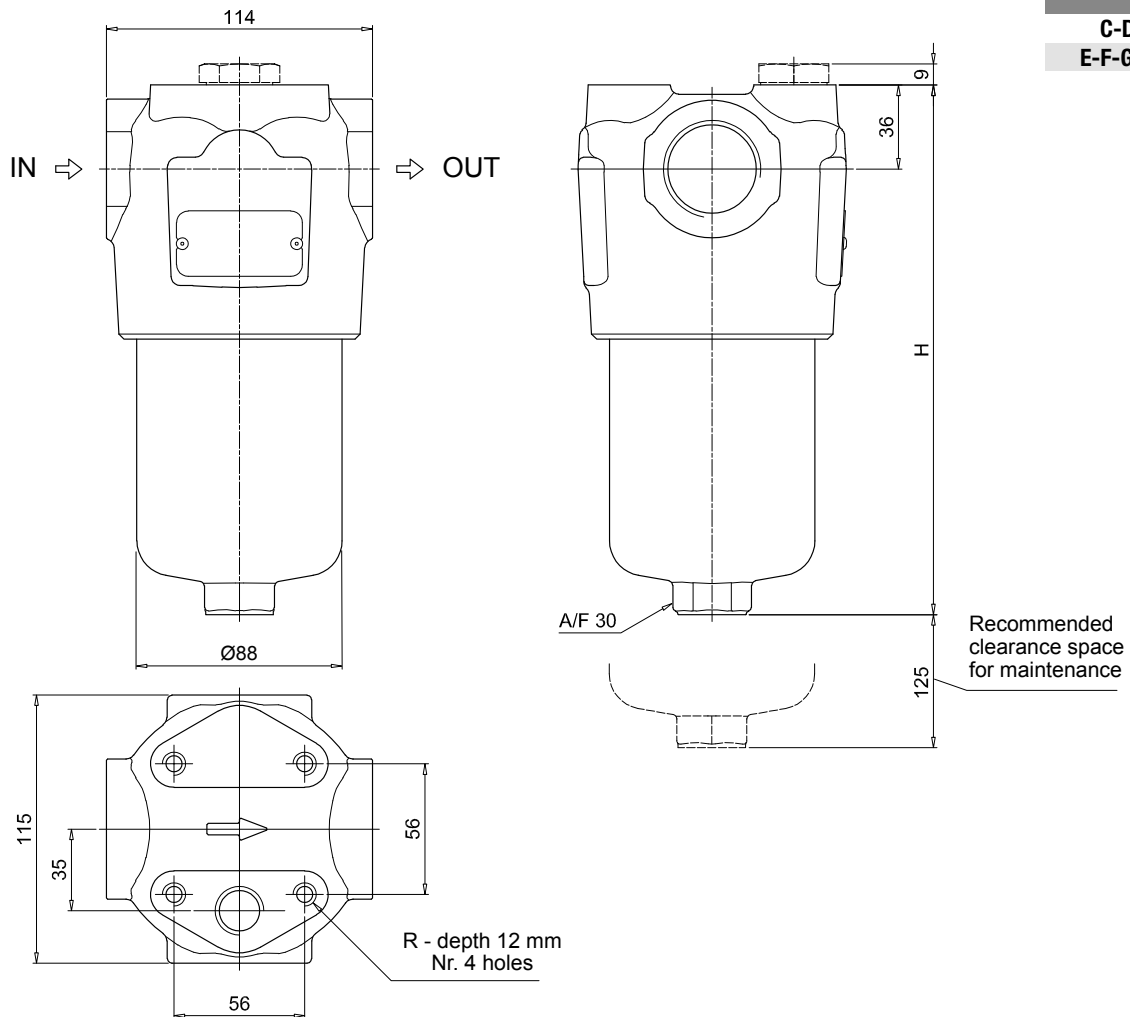
**DVA** Visual differential pressure indicator

### PLUGS

See page 741

**T2** Plug

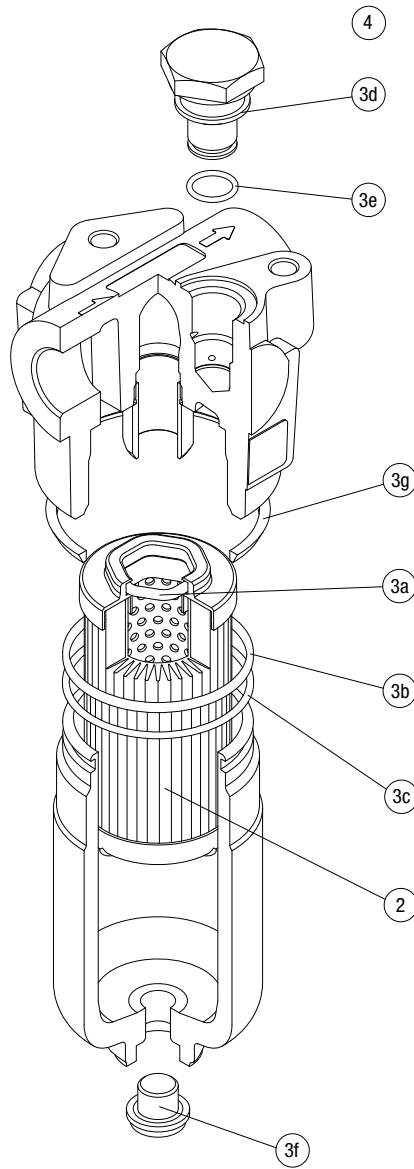
FMMX150	
Filter length	H [mm]
<b>1</b>	230
<b>2</b>	340
<b>3</b>	415
Connections	R
<b>C-D</b>	M10
<b>E-F-G-H</b>	3/8" UNC



# FMMX SPARE PARTS

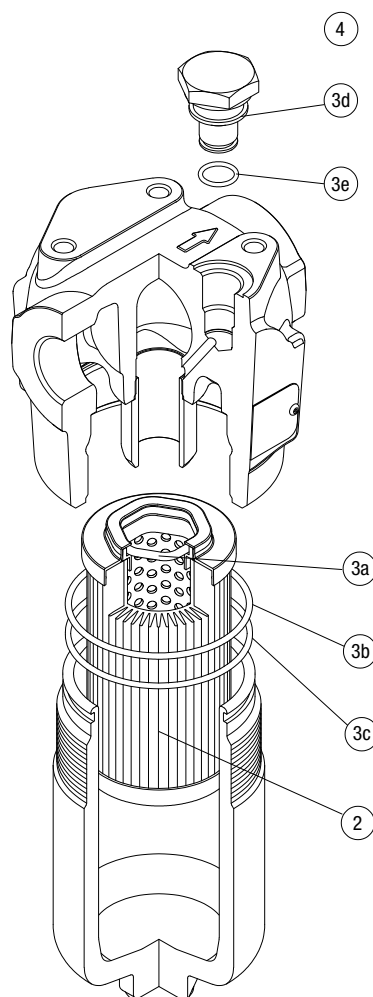
Order number for spare parts

## FMMX 050



Item:	Q.ty: 1 pc.	Q.ty: 1 pc.		Q.ty: 1 pc.	
Filter series	Filter element	Seal Kit code number		Indicator connection plug	
FMMX 050	See order table	NBR	FPM	NBR	FPM
		02050864	02050865	T2H	T2V

## FMMX 150



Item:	Q.ty: 1 pc.	Q.ty: 1 pc.	Q.ty: 1 pc.		
Filter series	Filter element	Seal Kit code number		Indicator connection plug	
FMMX 150	See order table	NBR	FPM	NBR	FPM
	2	3 (3a ÷ 3e)		4	
		02050868	02050869	T2H	T2V

## LubeTeam Hydraulic S.r.l.

*Administration and Headquarter:*

Via Tufara Scautieri, 6

83018 - San Martino Valle Caudina (AV)

*Office and Warehouse:*

S.S. 7 Appia, Km. 237,00

82011 - Airola BN

ITALY

Tel. +39 0823 950 994

Fax +39 0823 412 546

[www.lubeteam.it](http://www.lubeteam.it) [info@lubeteam.it](mailto:info@lubeteam.it)

Italian VAT / C.F. e P.IVA: 01251720627

Follow us



This document is the property of LubeTeam Hydraulic S.r.l. All data reported here are for the exclusive use of the Receiver. Reproduction is not authorized without writing permission, in all or in part of the content of this document, in accordance to Law 633 art. 171, dated April 22, 1941.

Il presente documento è di proprietà della LubeTeam Hydraulic S.r.l. I dati riportati sono per esclusivo del destinatario. La riproduzione, di tutto o in parte, non è autorizzata senza permesso scritto secondo l'art. 171 della L. 633 del 22 Aprile 1941.