



MP Filter
LMD 951 Series



 HYDRAULIC
COMPONENTS
& FLUID CONTAMINATION
CONTROL

LMD 951 series

Maximum working pressure up to 1.6 MPa (16 bar) - Flow rate up to 1200 l/min



LMD 951 GENERAL INFORMATION

Description

Technical data

Low & Medium Pressure filters

Duplex

Maximum working pressure up to 1.6 MPa (16 bar)

Flow rate up to 1200 l/min

LMD950 is a range of versatile low pressure duplex filter with integrated changeover function to allow the filter element replacement without the system shut-down.

They are directly connected to the lines of the system through the hydraulic fittings.

Available features:

- Flanged connections up to 4", for a maximum flow rate of 1200 l/min
- Base-mounting design, for ease of the replacement of the filter element
- Fine filtration rating, to get a good cleanliness level into the system
- Water removal elements, to remove the free water from the hydraulic fluid. For further information, see the Contamination Management document and the dedicate leaflet.
- Balancing valve, to equalize the housing pressure before the switch
- Bypass valve, to relieve excessive pressure drop across the filter media
- Drain ports, to remove the fluid from the housing prior the maintenance work
- Visual, electrical and electronic differential clogging indicators

Common applications:

- Systems where shut-down causes high costs
- Systems where shut-down causes safety issues

Filter housing materials

- Head: Anodized Aluminium
- Housing: Anodized Aluminium
- Manifolds: Welded - Painted black
- Bypass valve: Steel
- 3-way ball valve: Steel body - Stainless steel ball
- Check valve: Cast Iron body - AISI 304 leaf

Pressure

- Test pressure: 2.4 MPa (24 bar)
- Min. Burst pressure: 4.8 MPa (48 bar)
- Pulse pressure fatigue test: 1 000 000 cycles with pressure from 0 to 1.6 MPa (16 bar)

Bypass valve

- Opening pressure 0.35 MPa (3.5 bar) $\pm 10\%$
- Other opening pressures on request.

Number of filter elements

LMD 951: 2 filter elements CU950-3

Filter element features

| Filter LMD951 | | Filter element CU | |
|---|--------------|-----------------------------|------------|
| Δp Element type | | | |
| Element media | Construction | Δp Series | Δp |
| A - Microfiber | Standard | N | 20 bar |
| WA - Water absorber microfiber | Standard | N | 20 bar |
| M - Wire mesh | Standard | N | 20 bar |
| P - Paper | Standard | N | 20 bar |
| <i>Please see ordering code tables to check element Δp series availability based on filter features.</i> | | | |
| Flow direction through the filter element: From OUT to IN | | | |

Seals

FPM series V

Temperature

From -25° C to +110° C

Connections

- LMD 951: In-line Inlet/Outlet
- Same side

Note

LMD 951 filters are provided for vertical mounting

Weights [kg] and volumes [dm³]

| Filter series | Weights [kg] | | Volumes [dm ³] | |
|----------------|--------------|--------|----------------------------|--------|
| | DN 80 | DN 100 | DN 80 | DN 100 |
| LMD 951 | 102 | 130 | 62 | 66 |

Flow rates [l/min]

| Filter series | Length | Filter element design - N Series | | | | | |
|----------------|----------|----------------------------------|-----|-----|------|------|-------------------|
| | | A03 | A06 | A10 | A16 | A25 | M25 M60 M90 |
| LMD 951 | 3 | 853 | 884 | 995 | 1066 | 1096 | 1233 |

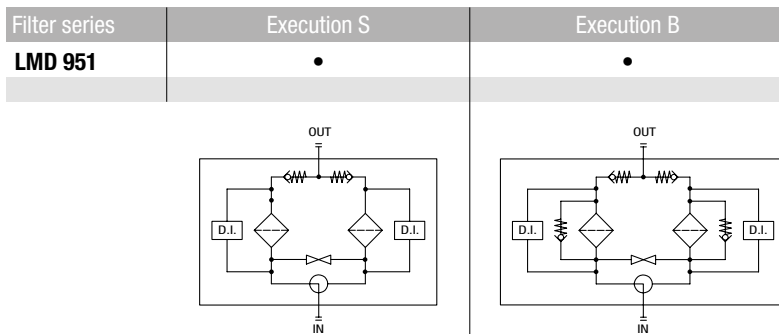
Maximum flow rate for a complete low and medium pressure filter with a pressure drop $\Delta p = 0.7$ bar.

The reference fluid has a kinematic viscosity of 30 mm²/s (cSt) and a density of 0.86 kg/dm³.

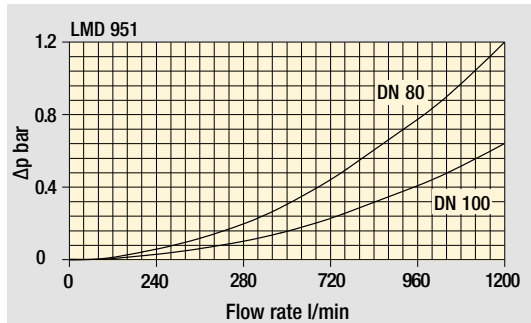
For different pressure drop or fluid viscosity we recommend to use our selection software available on www.mpfiltri.com.

You can also calculate the right size using the formulas present on the FILTER SIZING paragraph at the beginning of the full catalogue or at the beginning of the filter family brochure. Please, contact our Sales Department for further additional information.

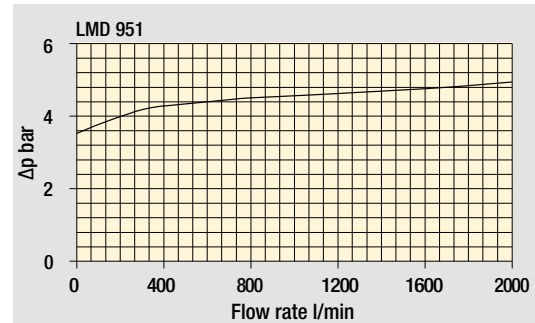
Hydraulic symbols



Pressure drop



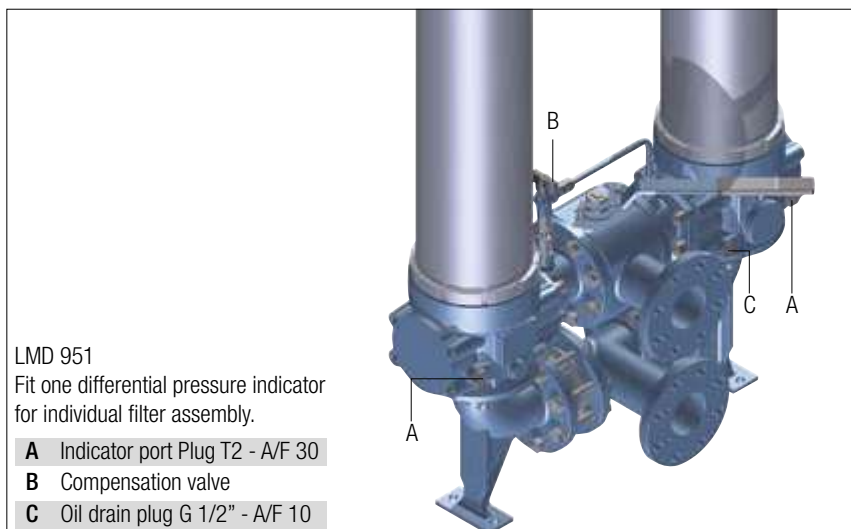
Filter housings
 Δp pressure drop



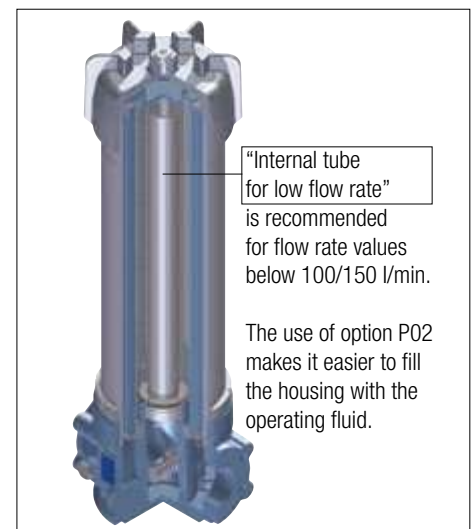
Bypass valve
pressure drop

The curves are plotted using mineral oil with density of 0.86 kg/dm³ in compliance with ISO 3968. Δp varies proportionally with density.

Focus on



Execution P02



LMD 951

Designation & Ordering code

COMPLETE FILTER

| | | | | | | | | |
|---|--------------------------------------|---|----------|----------|-----------|------------|----------|------------|
| Series and size LMD951 | Configuration example: LMD951 | 3 | B | V | F1 | A10 | N | P01 |
| Length 3 | | | | | | | | |
| Bypass valve S Without bypass B With bypass 3.5 bar | | | | | | | | |
| Seals and treatments V FPM | | | | | | | | |
| Connections F1 3" SAE 3000 psi/M F2 3" SAE 3000 psi/UNC F3 4" SAE 3000 psi/M F4 4" SAE 3000 psi/UNC F5 3" SAE 3000 psi/M, In-line connections F6 3" SAE 3000 psi/UNC, In-line connections F7 4" SAE 3000 psi/M, In-line connections F8 4" SAE 3000 psi/UNC, In-line connections | | | | | | | | |
| Filtration rating (filter media) A03 Inorganic microfiber 3 µm M25 Wire mesh 25 µm A06 Inorganic microfiber 6 µm M60 Wire mesh 60 µm A10 Inorganic microfiber 10 µm M90 Wire mesh 90 µm A16 Inorganic microfiber 16 µm A25 Inorganic microfiber 25 µm WA025 Water absorber inorganic microfiber 25 µm | | | | | | | | |
| | Element Δp N 20 bar | Execution P01 MP Filtri standard P02 With internal tube for low flow rate Pxx Customized | | | | | | |

FILTER ELEMENT

| | | | | | | |
|---|--------------------------------------|--|------------|----------|----------|------------|
| Element series and size CU950 | Configuration example: CU950 | 3 | A10 | V | N | P01 |
| Element length 3 | | | | | | |
| Filtration rating (filter media) A03 Inorganic microfiber 3 µm M25 Wire mesh 25 µm A06 Inorganic microfiber 6 µm M60 Wire mesh 60 µm A10 Inorganic microfiber 10 µm M90 Wire mesh 90 µm A16 Inorganic microfiber 16 µm A25 Inorganic microfiber 25 µm WA025 Water absorber inorganic microfiber 25 µm | | | | | | |
| Seals V FPM | | | | | | |
| | Element Δp N 20 bar | Execution P01 MP Filtri standard Pxx Customized | | | | |

CLOGGING INDICATORS

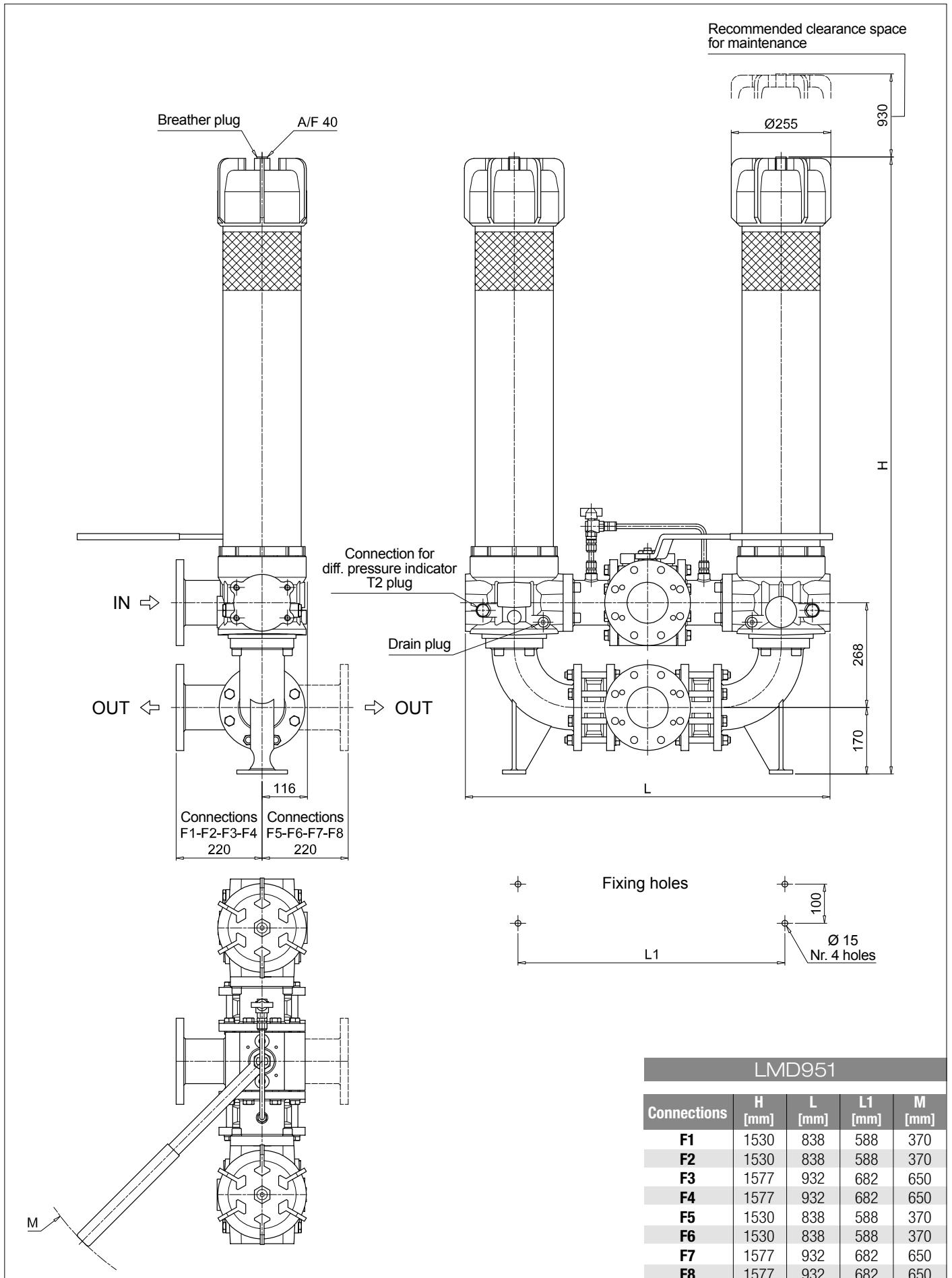
See page 720

| | |
|--|--|
| DEA Electrical differential pressure indicator | DLE Electrical / visual differential pressure indicator |
| DEM Electrical differential pressure indicator | DTA Electronic differential pressure indicator |
| DEU Electrical differential pressure indicator | DVA Visual differential pressure indicator |
| DLA Electrical / visual differential pressure indicator | DVM Visual differential pressure indicator |

PLUGS

See page 741

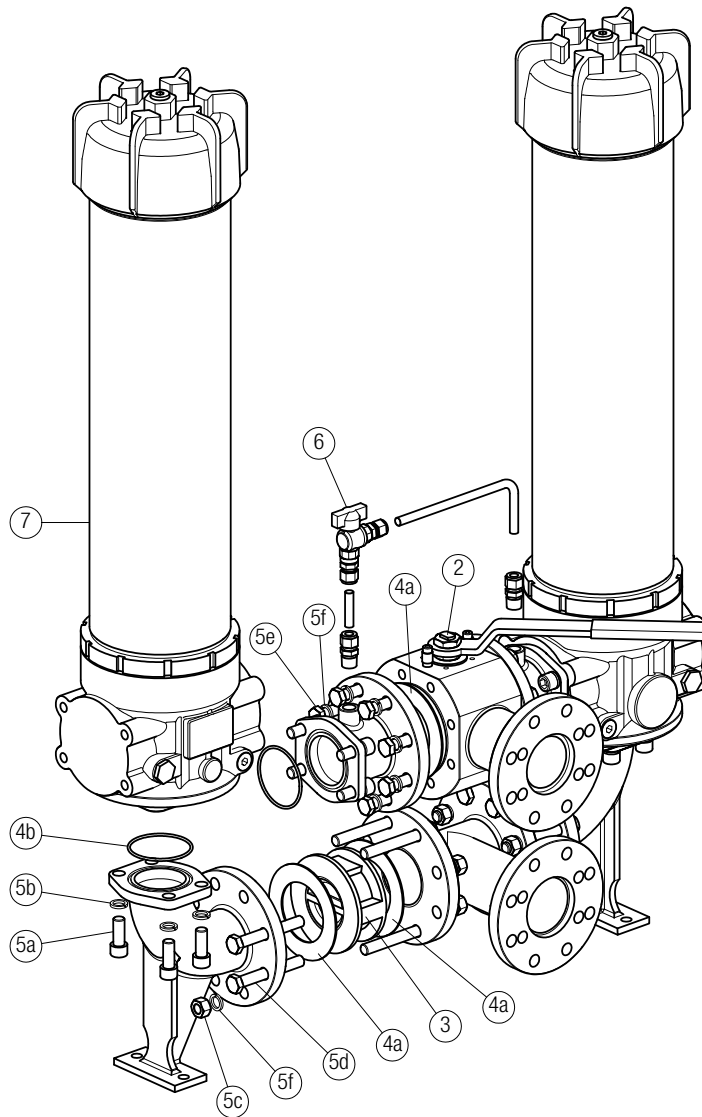
| |
|----------------|
| T2 Plug |
|----------------|



LMD 951 SPARE PARTS

Order number for spare parts

LMD 951



Item 7:
for complete filter code and
spare parts, see
LMP 950 - 951 series chapter

Quantity:
- filter spare parts: 2 pcs.
- filter seal kit: 2 pcs.

| Item: | Q.ty: 1 pc. 2 | | Q.ty: 2 pcs. 3 | Q.ty: 1 pc. 4 | Q.ty: 1 pc. 5 (5a ÷ 5f) | Q.ty: 1 pc. 6 | Q.ty: 2 pcs. 7 |
|---|-------------------------------|---------------------------------|--------------------------|-------------------------|-----------------------------------|---|--------------------------|
| Filter series LMD 951 | 3-way ball valve PN 16 | | One-way valve | Seal Kit | Threaded fasteners kit | G 1/2" Ball Valve Kit with straight fittings | Filter |
| F1 - F2 - F5 - F6 / D1 - D3 (3" SAE / DIN PN16 DN 80) | 3" SAE 3000 psi/M 02001135 | 3" SAE 3000 psi/UNC 02001438 | 02001418 | 02050388 | 02049056 | 02025043 | LMP9513xVF1xxxNP01 |
| F3 - F4 - F7 - F8 / D2 - D4 (4" SAE / DIN PN16 DN 100) | 4" SAE 3000 psi/M 02001162 | 4" SAE 3000 psi/UNC 02001439 | 02001419 | 02050389 | 02049057 | | LMP9513xVF3xxxNP01 |

LubeTeam Hydraulic S.r.l.

Administration and Headquarter:

Via Tufara Scautieri, 6

83018 - San Martino Valle Caudina (AV)

Office and Warehouse:

S.S. 7 Appia, Km. 237,00

82011 - Airola BN

ITALY

Tel. +39 0823 950 994

Fax +39 0823 412 546

www.lubeteam.it info@lubeteam.it

Italian VAT / C.F. e P.IVA: 01251720627

Follow us



This document is the property of LubeTeam Hydraulic S.r.l. All data reported here are for the exclusive use of the Receiver. Reproduction is not authorized without writing permission, in all or in part of the content of this document, in accordance to Law 633 art. 171, dated April 22, 1941.

Il presente documento è di proprietà della LubeTeam Hydraulic S.r.l. I dati riportati sono per esclusivo del destinatario. La riproduzione, di tutto o in parte, non è autorizzata senza permesso scritto secondo l'art. 171 della L. 633 del 22 Aprile 1941.